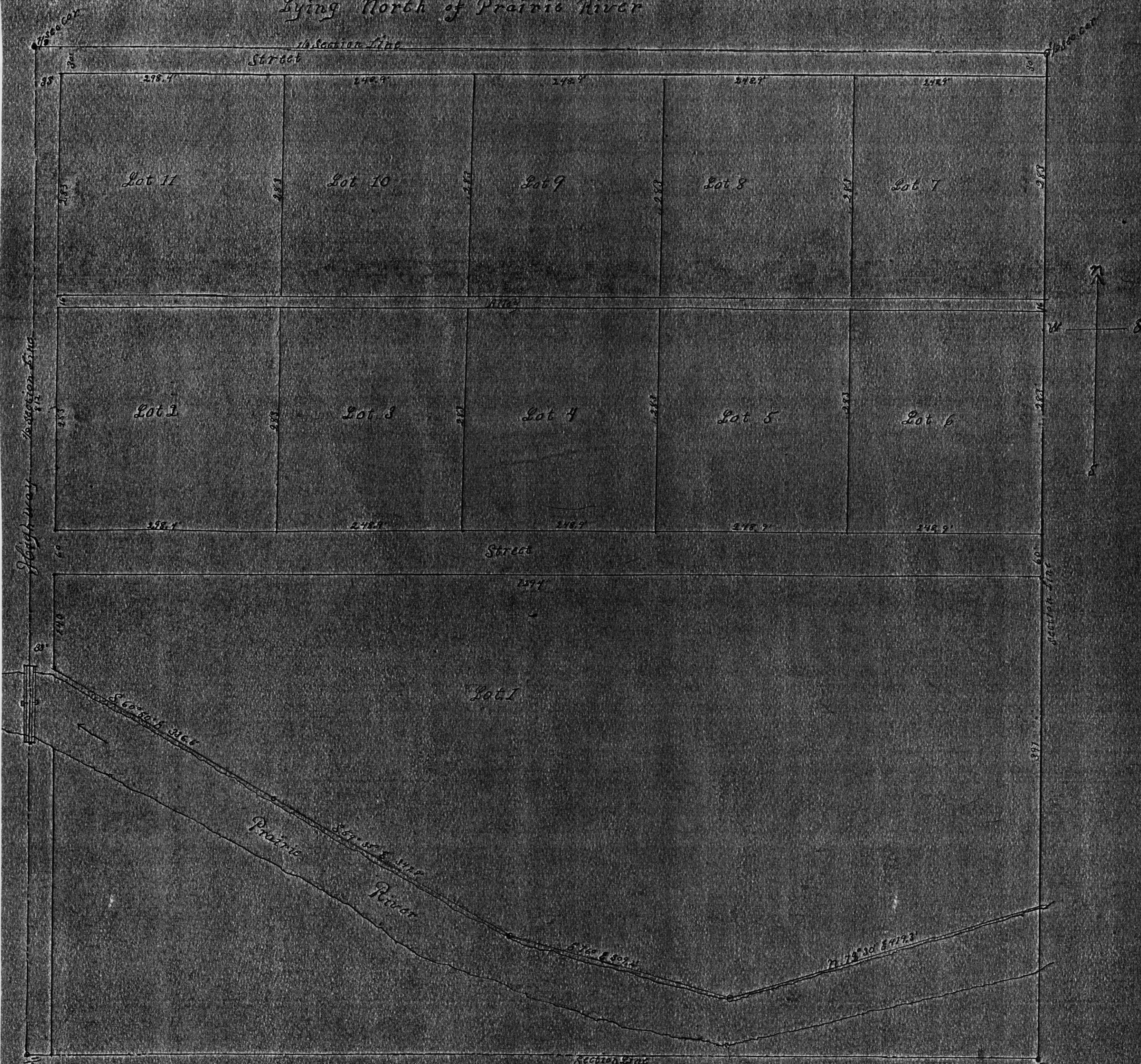


Cotter and Heineman's Sub-division

of that portion
of
S 8 1/2 S. E. 1/4 Sec. 1 T. p. 31 N. R. 6 E. 3
Lying North of Prairie River



REGISTER'S OFFICE,
LINCOLN CO. WIS.
Proposed for Record 16th day of
October A. D. 1878, at
10 o'clock P. M. and recorded in Vol
2 of Plat on Page 37
John Clark
Register of Deeds

Oct. 1878

Scale 100ft = 1 inch

AC Squith C. E.

Sec 22-35-6

B