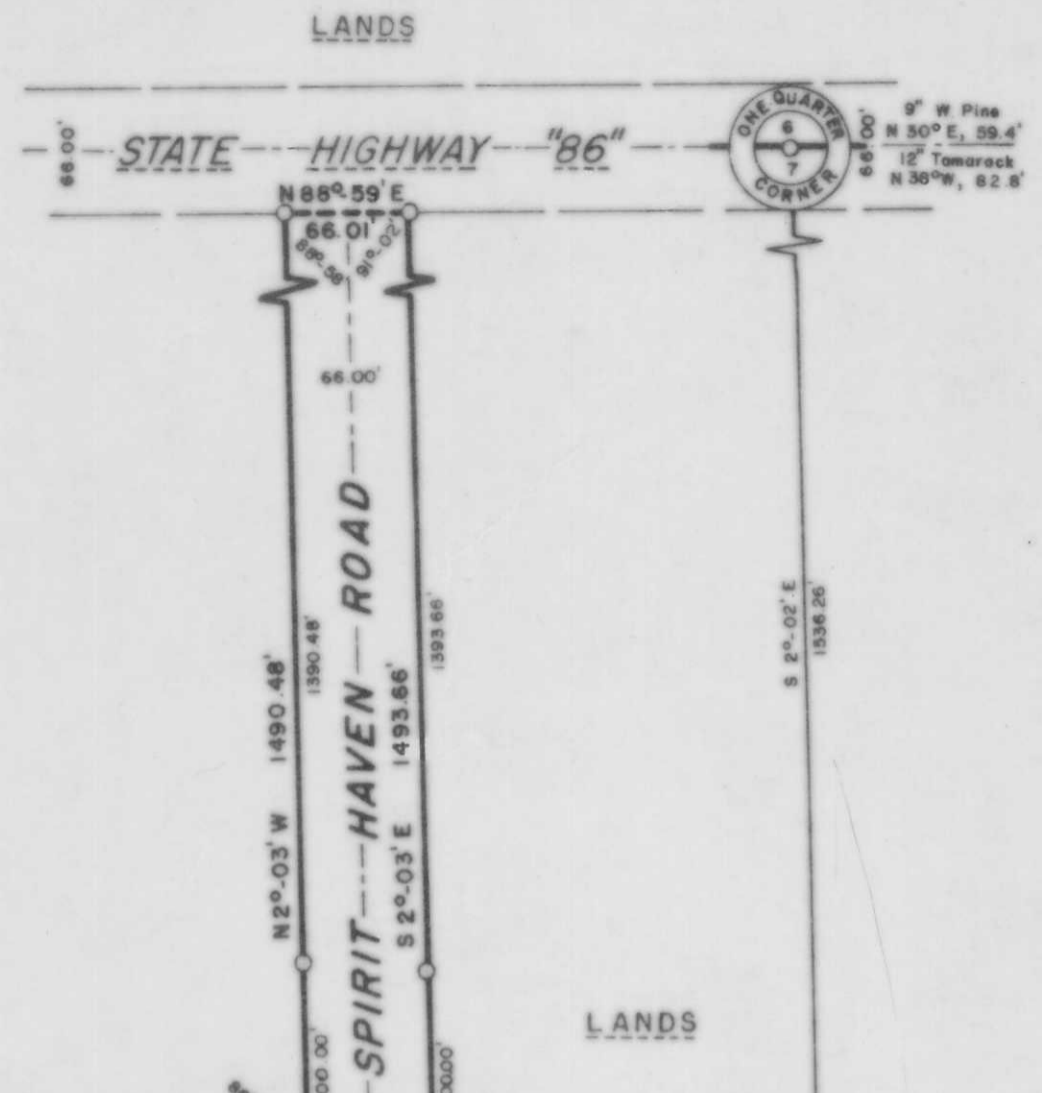
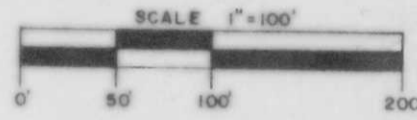
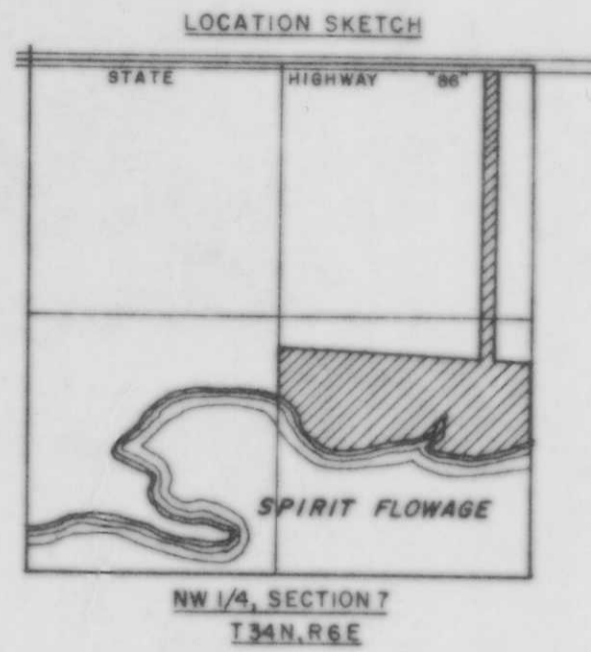
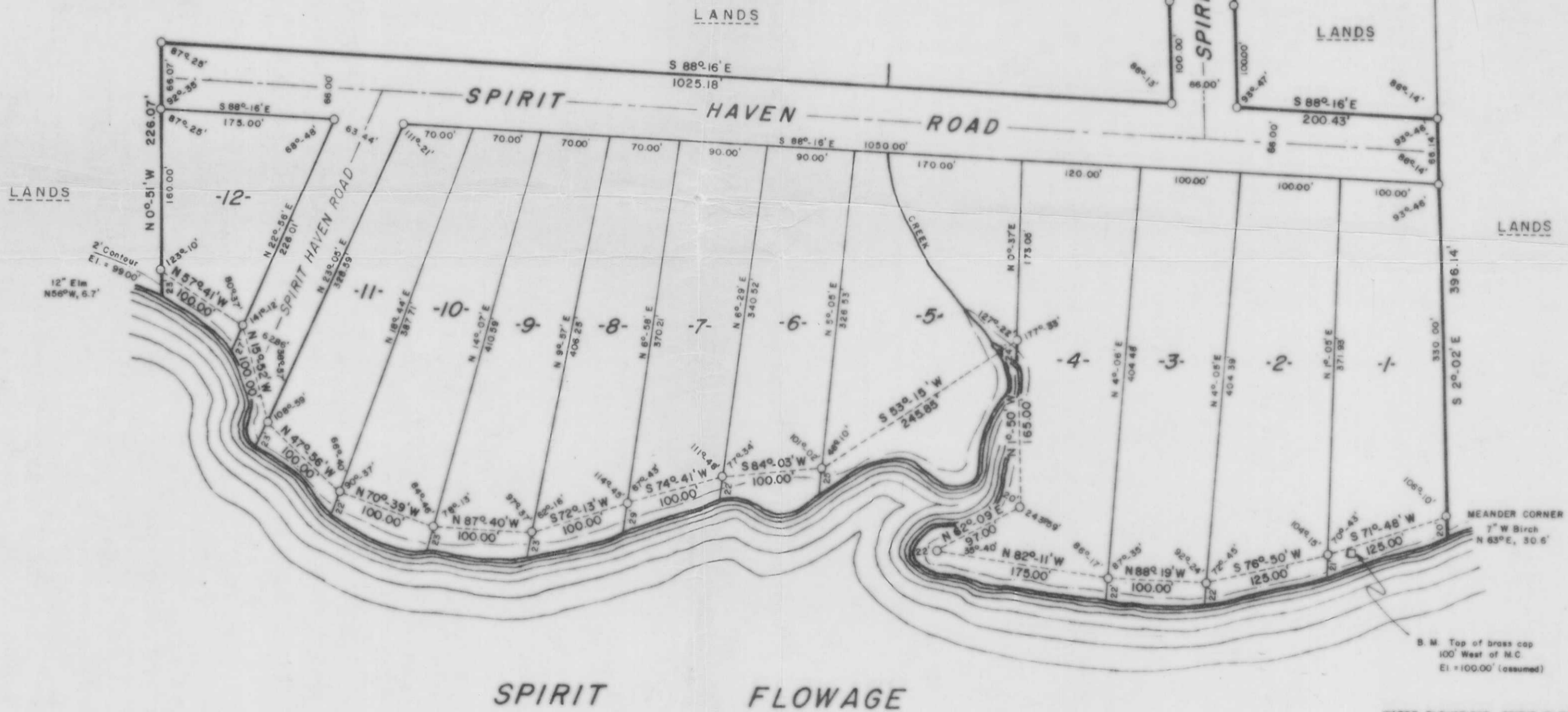


WISCONSIN OSCAM



RECEIVED AT LINCOLN COUNTY COURTHOUSE THIS 13 DAY OF FEBRUARY 2000 LAND INFORMATION OFFICE



WATER ELEVATIONS, SPIRIT FLOWAGE

High	= 97.00'
Low	= 89.00'
February 9, 1967	= 89.00'

-SPIRIT HAVEN-

PART OF
E 1/2 of the NW 1/4
SECTION 7, T34N, R6E
LINCOLN COUNTY, WIS

RECEIVED AT LINCOLN COUNTY COURTHOUSE THIS 3rd DAY OF Feb 2000 Pat Phelan LAND INFORMATION OFFICE

B