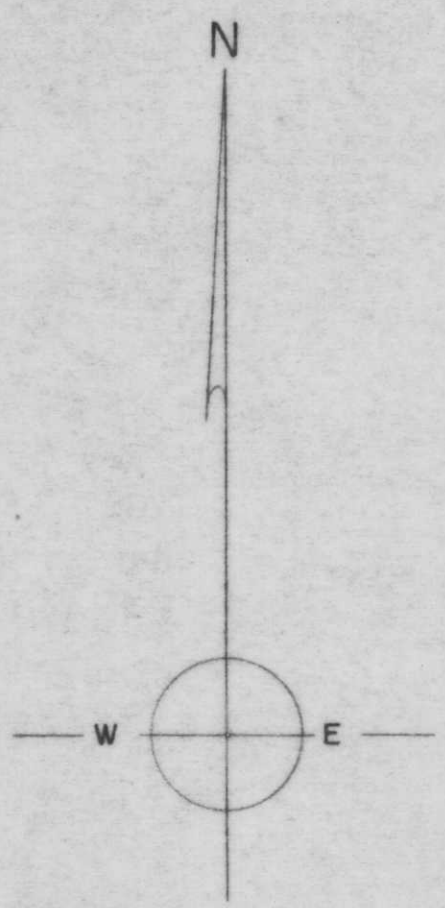
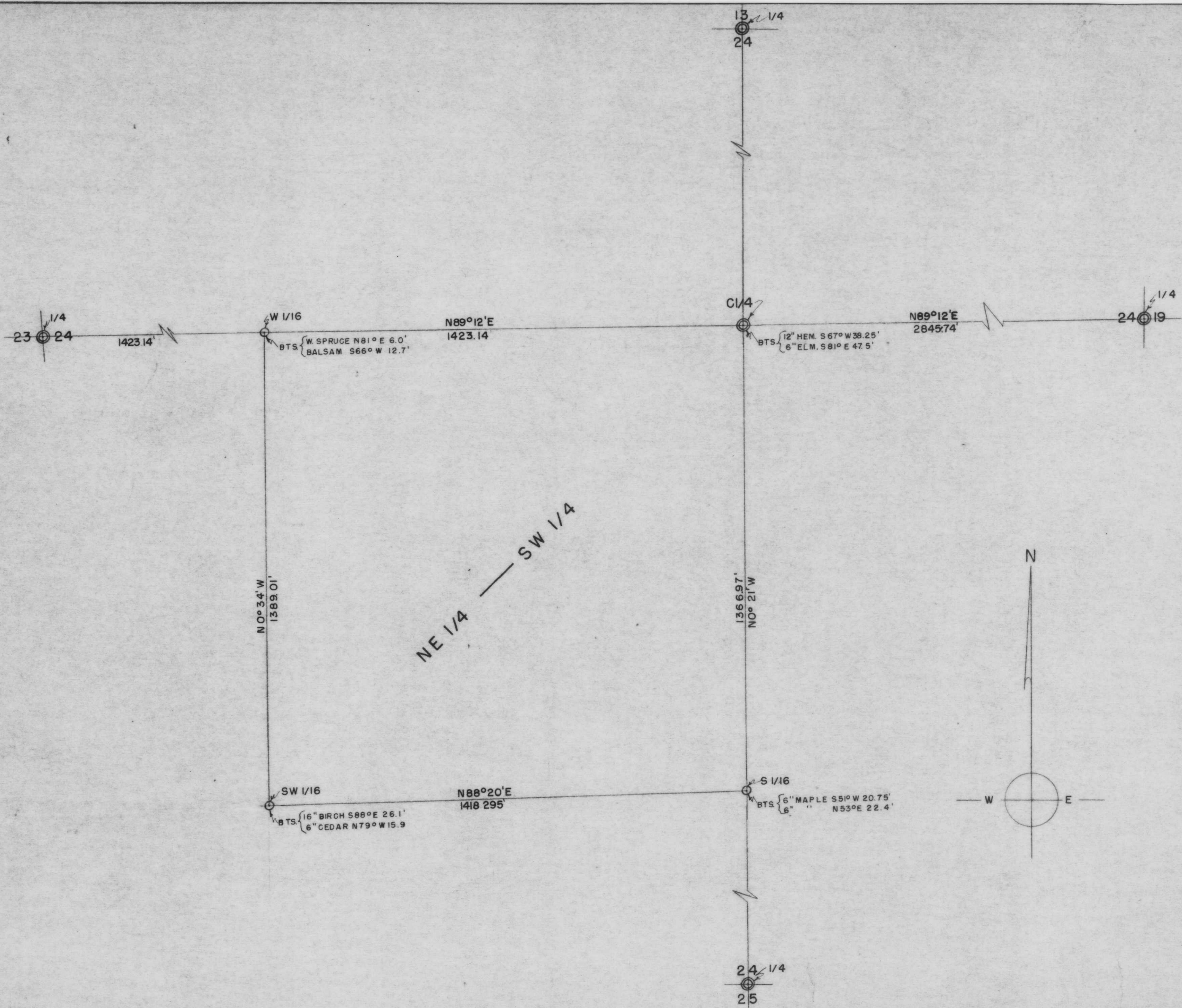


1111A



NE 1/4 - SW 1/4 SEC. 24, T. 33 N., R. 4 E.

RECEIVED AT LINCOLN COUNTY  
 COURTHOUSE THIS 21 DAY  
 OF October 1975.  
*Ruth R. Pich*  
 TAX DESCRIPTION OFFICE



SURVEY FOR	
KURTZWEL	
SCALE 1" = 200'	DATE 2/23/61
DWG. NO.	DWN. BY J.C.K.
2724-2	GENISOT ENGINEERING CO. RHINELANDER, WIS.