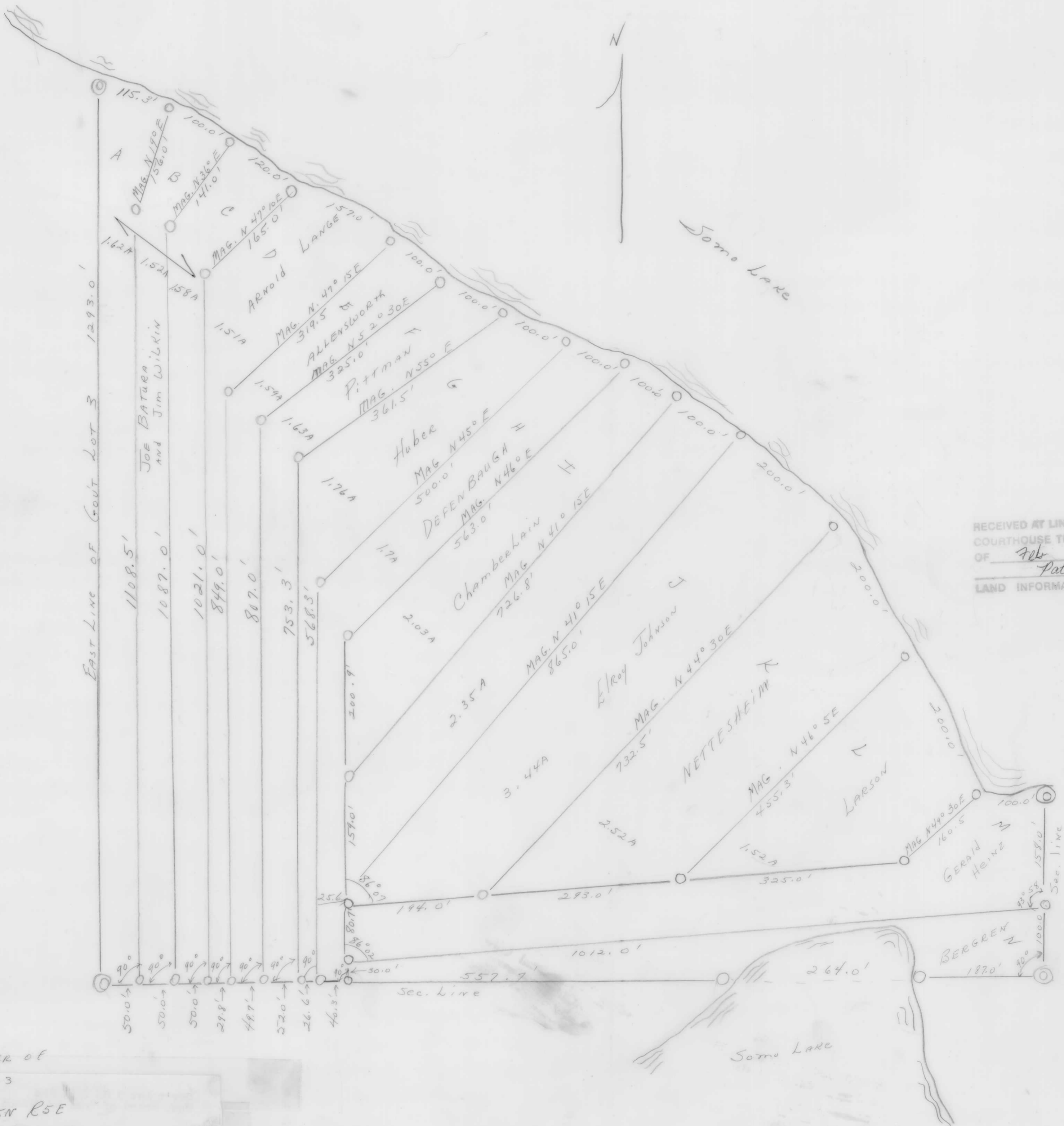


M417A



RECEIVED AT LINCOLN COUNTY  
 COURTHOUSE THIS 3rd DAY  
 OF Feb 2000  
 Pat Priebe  
 LAND INFORMATION OFFICE

CORNER OF  
 Lot 3  
 T35N R5E

SE CORNER OF  
 Sec. 8 T35N R5E