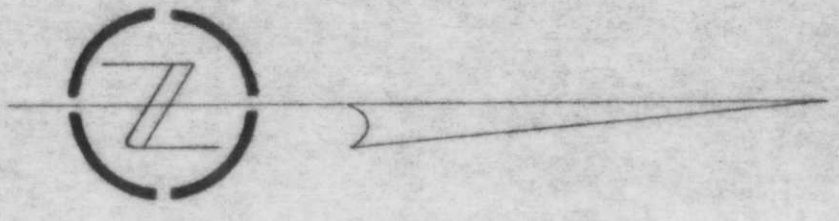


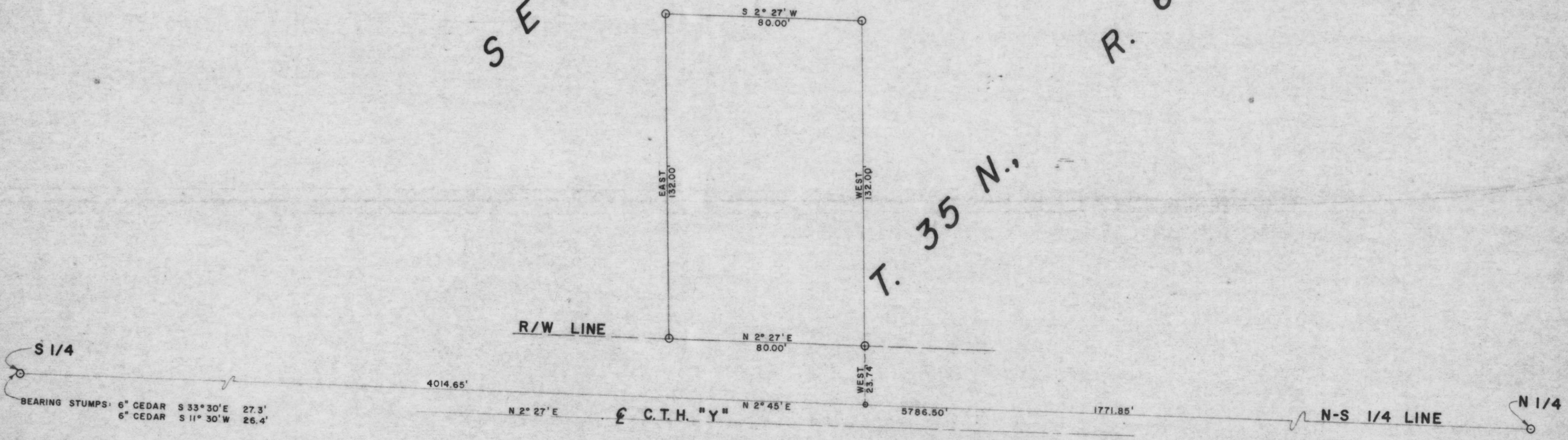
A



SEC. 5

R. 6 E.

T. 35 N.



S 1/4

BEARING STUMPS: 6" CEDAR S 33° 30' E 27.3'
 6" CEDAR S 11° 30' W 26.4'

4014.65'

N 2° 27' E

C.T.H. "Y"

N 2° 45' E

5786.50'

1771.85'

N-S 1/4 LINE

N 1/4

- IRON PIPE
- P.K. NAIL

RECEIVED AT LINCOLN COUNTY
 COURTHOUSE THIS 21 DAY
 OF October, 1975.
Ruth R. Rude
 TAX DESCRIPTION OFFICE

KIRK RADDEMAN
 RFD 2
 TOMAHAWK, WIS.

SCALE 1" = 30' DATE 30 APR 73 DWN. BY L. J. S.
 DWG. NO. **4967** GENISOT AND ASSOCIATES, INC.
 RHINELANDER, WIS.