

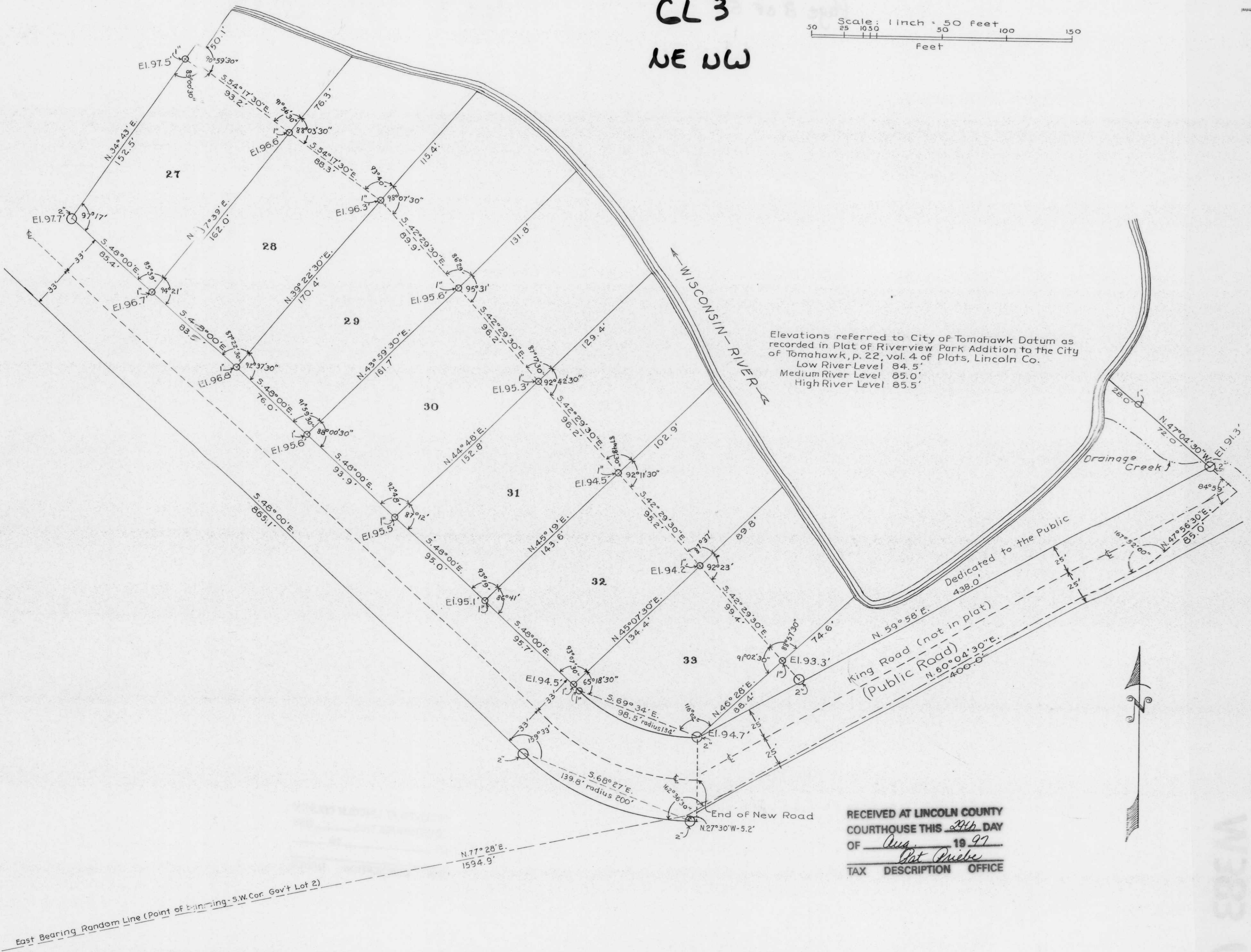
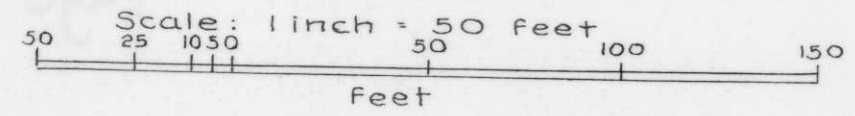
Sunset Blvd.

Page 4 of 5

Sec 35-35-6

CL 3

NE NW



Elevations referred to City of Tomahawk Datum as recorded in Plat of Riverview Park Addition to the City of Tomahawk, p. 22, vol. 4 of Plats, Lincoln Co.
Low River Level 84.5'
Medium River Level 85.0'
High River Level 85.5'

RECEIVED AT LINCOLN COUNTY
COURTHOUSE THIS 19th DAY
OF Aug 19 97
Pat Oriebe
TAX DESCRIPTION OFFICE

B