

Sunset Blvd.

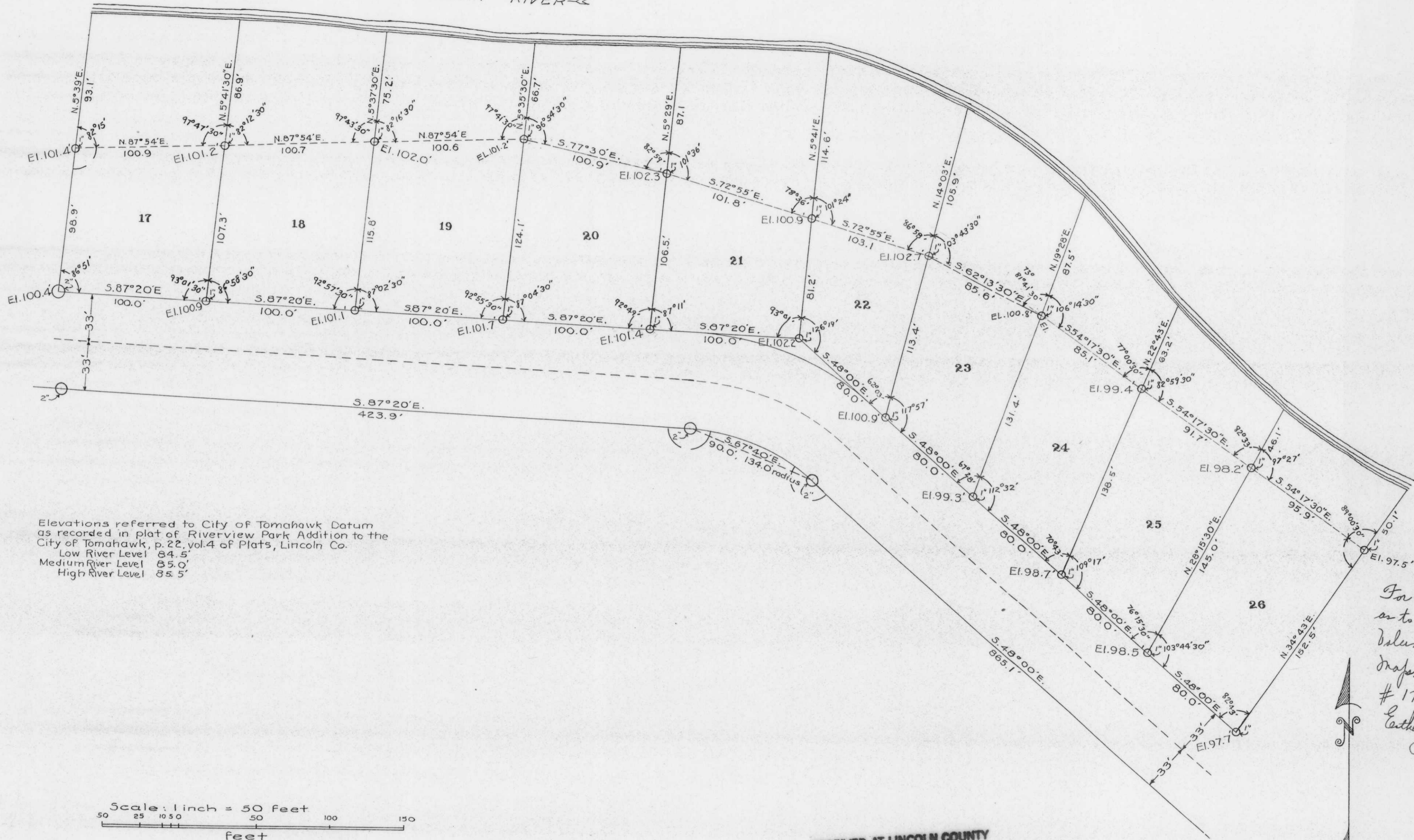
Sec 35-35-6

Page 3 of 5

GL3 N 1/2 NW 1/4

REGISTER
State of Wisconsin
Lincoln County
Received for Rec
at 11:22 clock
Vol. 4 of
File

← WISCONSIN RIVER →



Elevations referred to City of Tomahawk Datum
 as recorded in plat of Riverview Park Addition to the
 City of Tomahawk, p. 22, vol. 4 of Plats, Lincoln Co.
 Low River Level 84.5'
 Medium River Level 85.0'
 High River Level 85.5'

Scale: 1 inch = 50 feet
 50 25 10 5 0 50 100 150
 feet

RECEIVED AT LINCOLN COUNTY
 COURTHOUSE THIS 27th DAY
 OF Aug 19 97
 Pat Priole
 TAX DESCRIPTION OFFICE

For Cert
 as to a
 Volume
 Maps, Page
 # 176 45
 Lathen B
 Regist

M383 A