

Plat of Pine-Isle

For Order to Alter Plat,
see Vol. 500 - P. Page 468
Warren Weckwith
Reg. of Deeds

EIGHTH LINE VAR. 0° 20' E. 1528'

Resolution

Resolved by the Town Board of the Town of King, Lincoln County, Wisconsin, at a meeting duly held on the 23rd day of August A.D. 1927, that the plat of Pine-Isle on the Wisconsin River in said Town be and the same is hereby in all respects approved and that upon the filing of a true copy of said plat with the Town Clerk that said Town Clerk certify a copy of this resolution to be filed and recorded with said plat in the Office of the Register of Deeds of Lincoln County.

Offered and passage moved by Supervisor
John Timothy Ritt *Leads*
Seconded by Supervisor -
W. H. Erickson

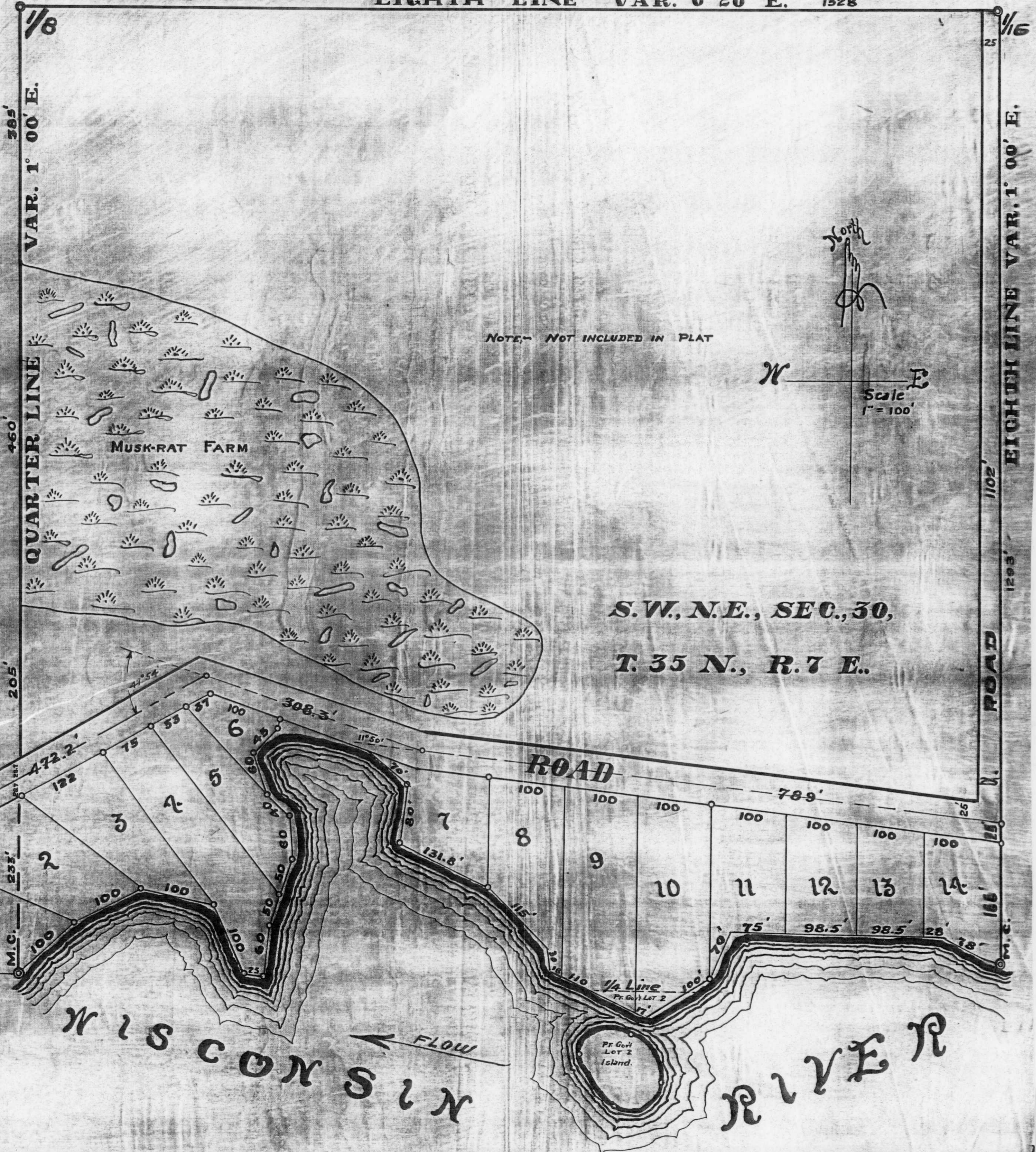
All members Voting Aye!
R. H. Clark
Town Clerk

LINCOLN COUNTY
STATE OF WISCONSIN } SS.
I, R. H. Clark Town Clerk
of the Town of King, Lincoln County, Wisconsin, hereby certify that the foregoing is a true and complete copy of the resolution passed and adopted by the Town Board of the Town of King approving the platting of Pine-Isle.
R. H. Clark
Town Clerk.

RECEIVED AT LINCOLN COUNTY
COURTHOUSE THIS 29th DAY
OF Aug 1927
Wm. Allen
TAX DESCRIPTION OFFICE

REGISTERED OFFICE
LINCOLN COUNTY, WIS.
Resolves and Plat filed
on the 29th day of November A.D. 1927
at 8:50 o'clock A. M.
W. M. Allen

S.E., N.W., SEC. 30.
Notes - NOT INCLUDED IN PLAT.



S.W., N.E., SEC. 30,
T. 35 N., R. 7 E.

B

D. S. Burnett, C.E., A.S.E.
606 - 2d Street