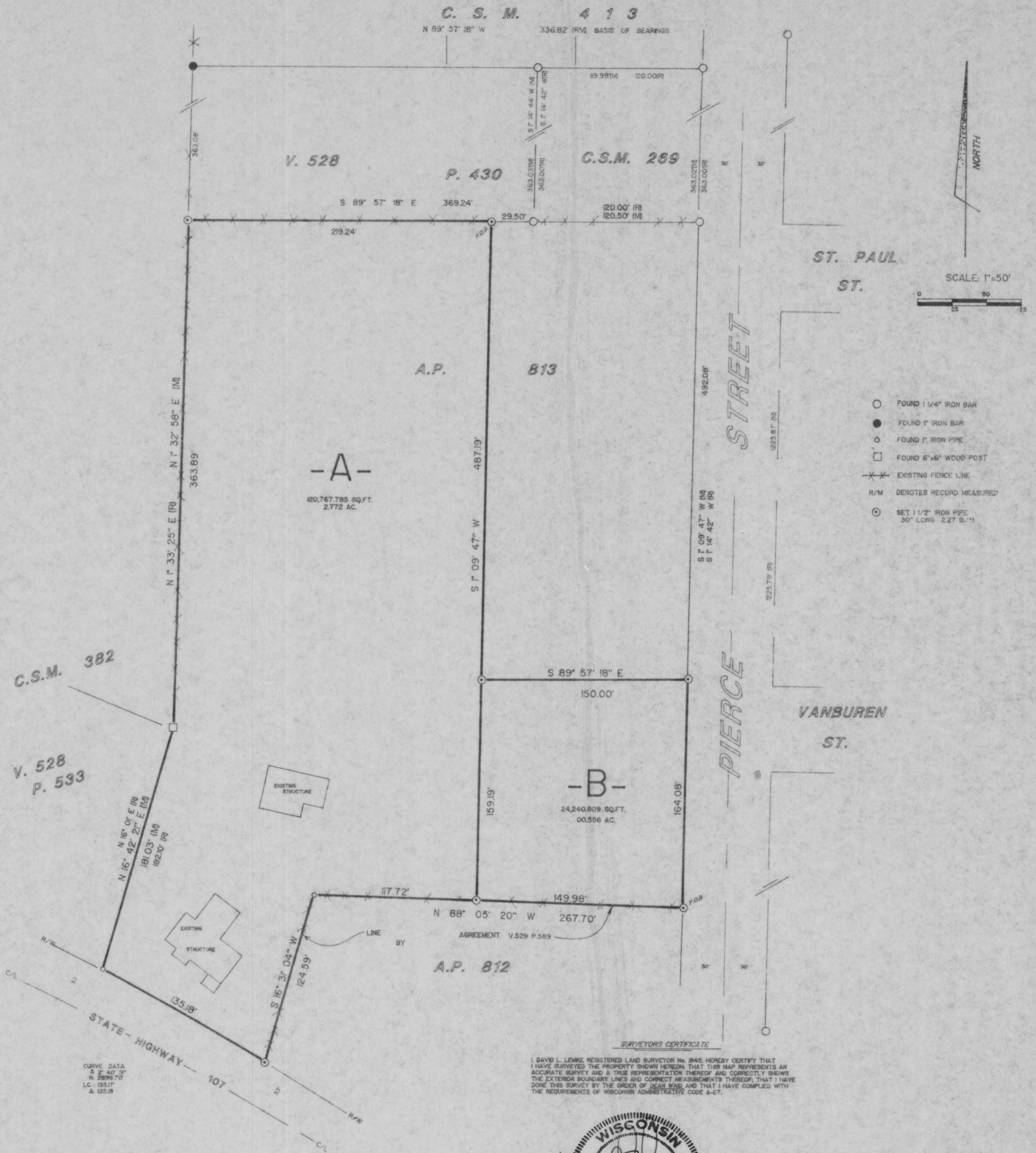
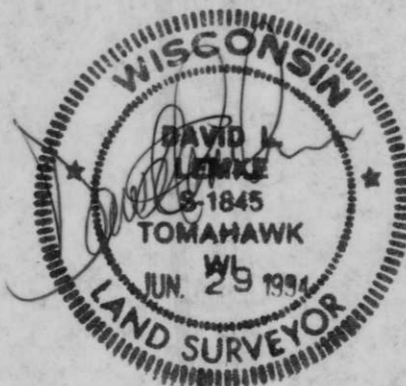


PART OF THE  
 NE 1/4 OF THE NE 1/4  
 SECTION 10, T. 31 N., R. 6 E.,  
 CITY OF MERRILL,  
 LINCOLN COUNTY, WISCONSIN.



RECEIVED AT LINCOLN COUNTY  
 COURTHOUSE THIS 13 DAY  
 OF Sept 1994.  
Pat Miller  
 TAX DESCRIPTION OFFICE



B