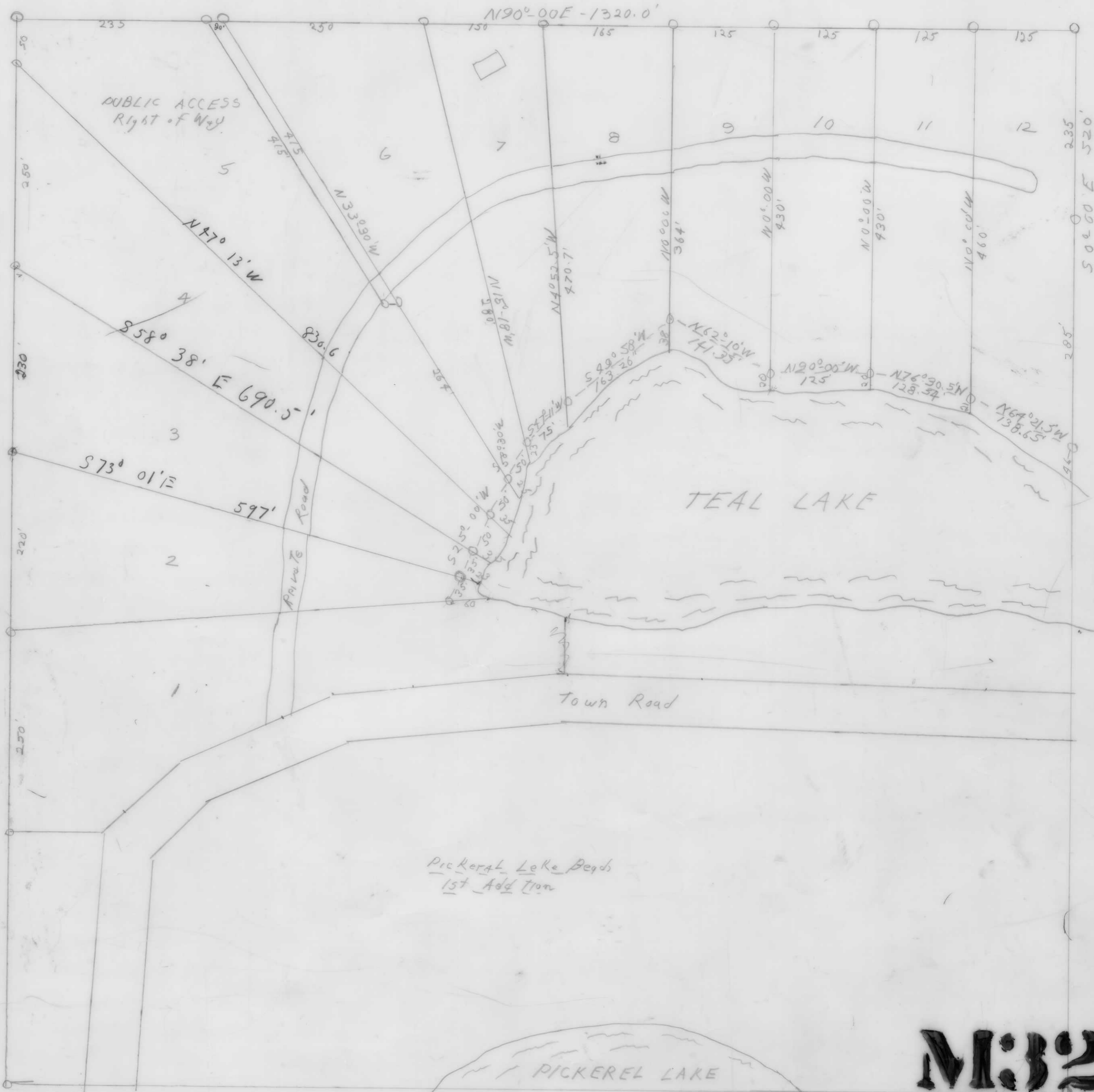


North West Corner
Section 16 T34N R8E
Stone Corner in Swamp

Lincoln County Forest Crop Lands Nottingham (prt)



N190°00'E - 1320.0'

PUBLIC ACCESS
Right of Way

TEAL LAKE

Town Road

Private Road

Pickeral Lake Beds
1st Addition

PICKEREL LAKE

0 50 100 200 300
Graphic Scale 1"=100'

M:32
A