

Part of  
**GOV'T. LOT 3**  
**SECTION 16, T35N, R5E**

Lincoln County, Wis.

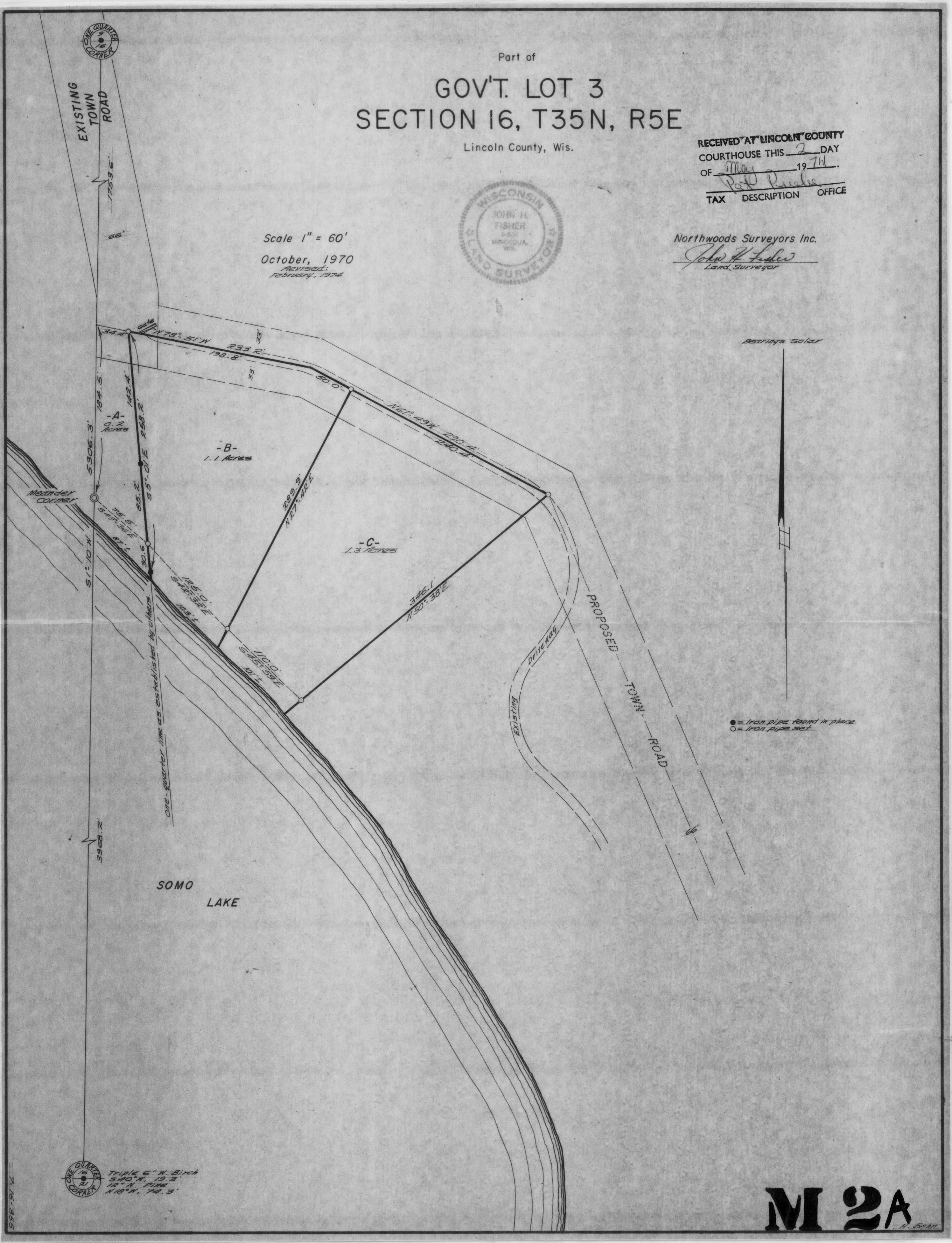
RECEIVED AT LINCOLN COUNTY  
 COURTHOUSE THIS 2 DAY  
 OF May 1971.  
*Pat P. Pankas*  
 TAX DESCRIPTION OFFICE



Northwoods Surveyors Inc.

*John H. Fisher*  
 Land Surveyor

Scale 1" = 60'  
 October, 1970  
 Revised:  
 February, 1974



● = Iron pipe found in place  
 ○ = Iron pipe set

ONE QUARTER CORNER  
 TRIPLE 6" W. Birch  
 540° N, 19.3'  
 12" N. PINE  
 N 18° N, 74.3'

**M 2A**