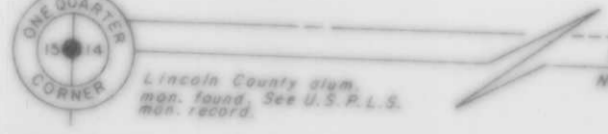


W 261A



Lincoln County Blm. Map - 1900. See U.S.P.L.S. Map 10076.



County

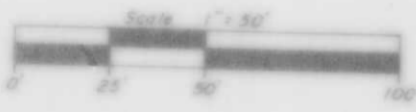
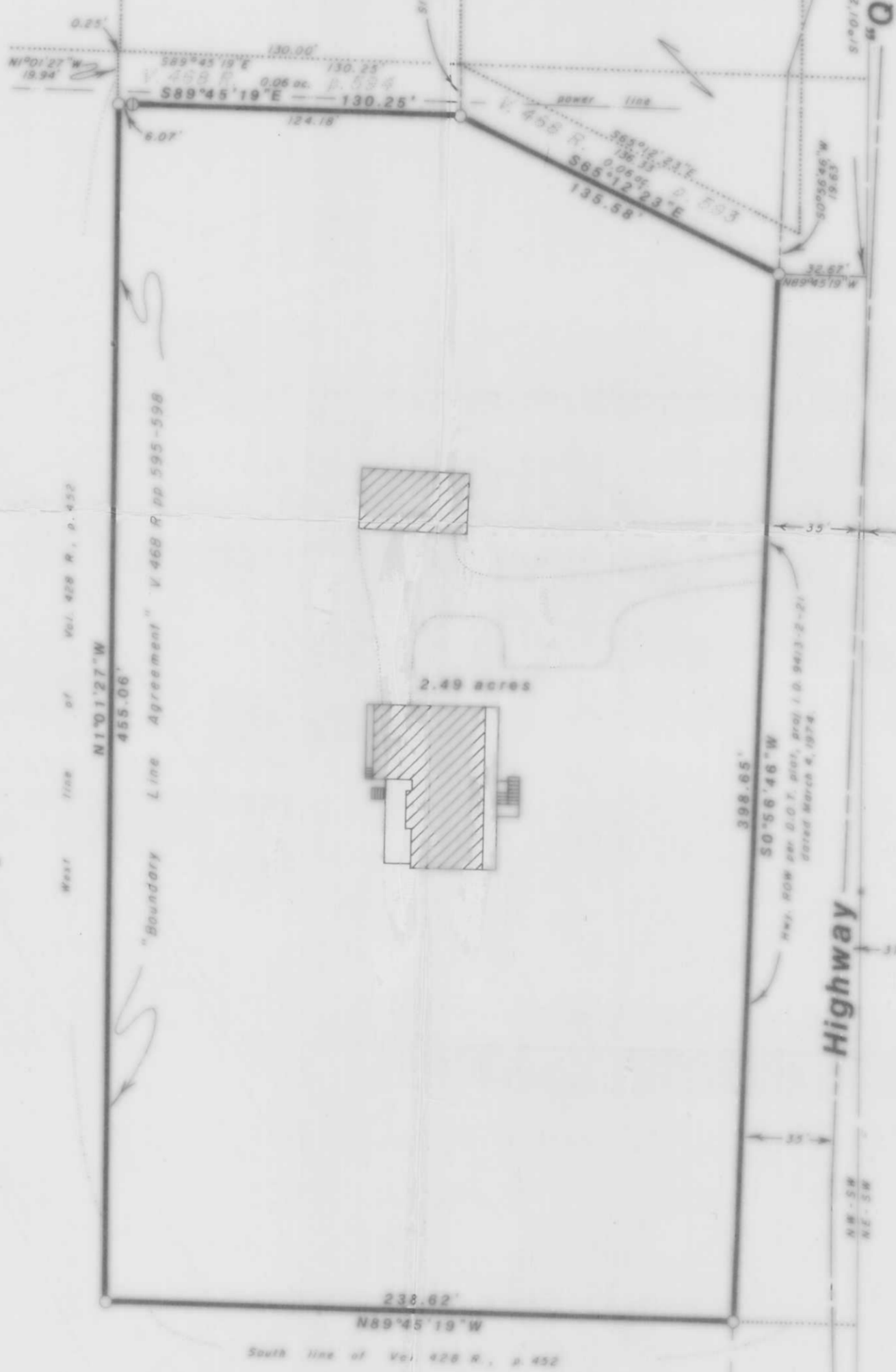
Highway

South State Street

Vol. 264 R., p. 290

Vol. 417 R., pp. 240-241

Bearings Magnetic



- ⊙ - Axle shaft found
- - 1" iron pipe set



Part of the  
**NW 1/4 OF THE SW 1/4**  
**SECTION 14, T31N, R6E**  
 City of Merrill  
 Lincoln County, Wisconsin

I hereby certify that this survey and the above map were made in accordance with acceptable professional standards and that the information contained thereon is, to the best of my knowledge, information and belief, a true and accurate representation thereof.  
 Any legal descriptions conforming to this survey have been provided on separate sheets.  
 The above survey was made by order of Gordon Mitchell.

Inman • Foltz and Associates, Inc.  
 architects engineers surveyors

DEC 26 1970