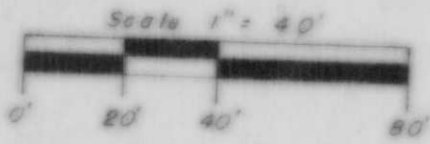


Part of the
NW 1/4 of the NE 1/4
SECTION 3, T35N, R6E
 Town of Bradley
 Lincoln County, Wisconsin

NORTH COUNTRY
SURVEYORS, INC.

SURVEYORS - SOIL TESTERS

Minocqua, Wisconsin

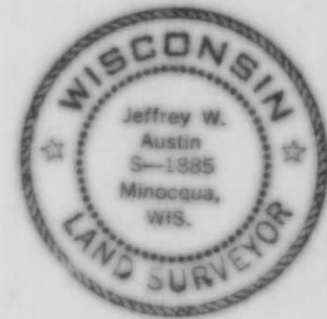


- ⊗ Oneida County Aluminum Monument found in place.
- ⊙ Lincoln County Berntsen Monument found in place.
- 3/4" diameter 30" long iron rod set, weighing 1.55 pounds per linear foot.
- 1 3/16" diameter 30" long iron rod set, weighing 3.77 pounds per linear foot.
- ▨ Existing building.

I, JEFFREY W. AUSTIN, Registered Land Surveyor S-1885 hereby certify that we have surveyed the property shown hereon; that this map is a true and accurate representation thereof; that said survey was performed by order of FRANK PAWLAK; and that we have complied with applicable requirements of s. 4-E 7 of the Wisconsin Administrative Code.

Jeffrey W. Austin
 Jeffrey W. Austin R.L.S. S-1885

Dated: AUGUST 25, 1987



Oneida County Aluminum Monument found in place.
 See U.S. P.L.S. Mon. Record for corner ties.

N89°42'52"E
 2043.24'

ONEIDA COUNTY
 LINCOLN COUNTY

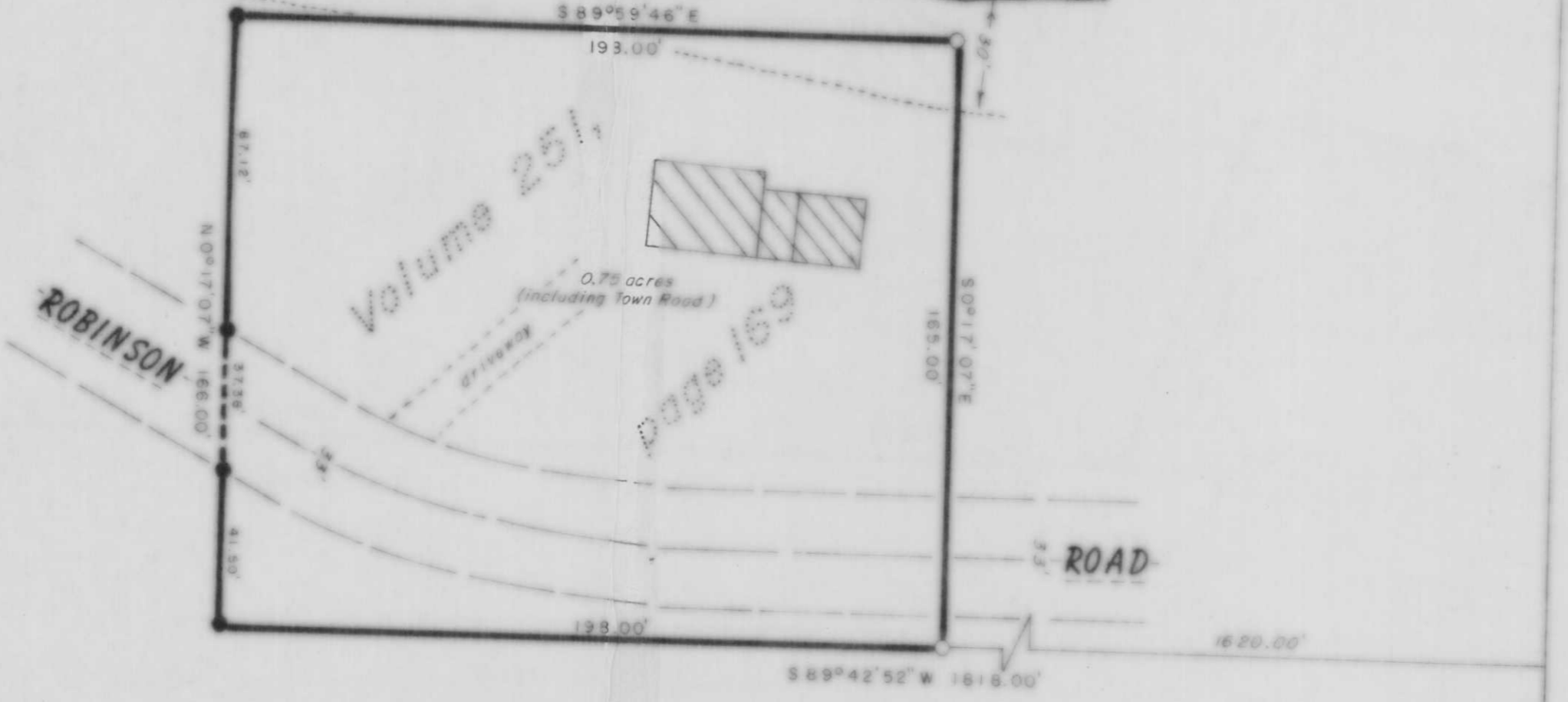


Lincoln County Berntsen Monument found in place.
 See U.S. P.L.S. Mon. Record for corner ties.

LAKE

NOKOMIS

Wisconsin Valley Improvement Co. retains ownership of lands within 30 feet of the water mark of Lake Nokomis.



S01°42'52"E 3196.57'

Lincoln County Berntsen Monument found in place.
 See U.S. P.L.S. Mon. Record for corner ties.



B