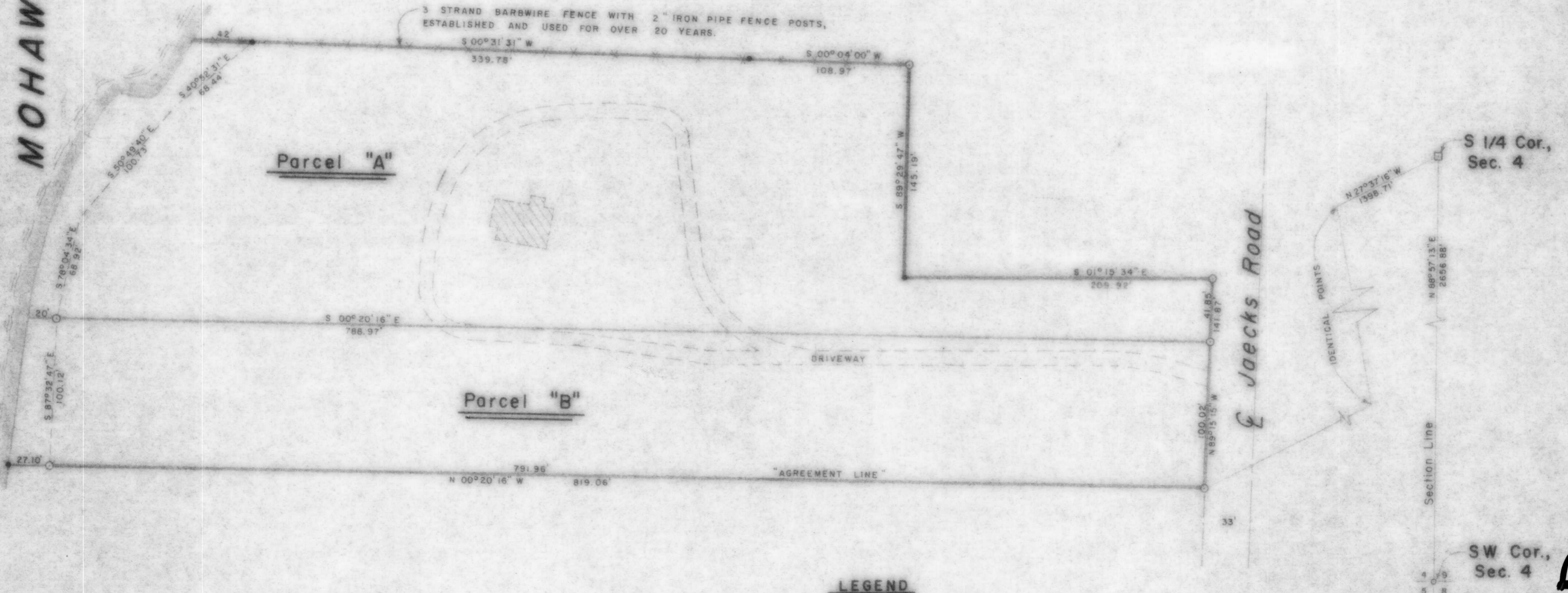


Part of the
NE 1/4 of the SW 1/4
SECTION 4
T. 34 N., R. 6 E.

Town of Bradley
 Lincoln County
 Wisconsin

L A K E
 M O H A W K S I N



RECEIVED AT LINCOLN COUNTY
 COURTHOUSE THIS 23rd DAY
 OF Oct 19 85.
Pat Priebe
 TAX DESCRIPTION OFFICE