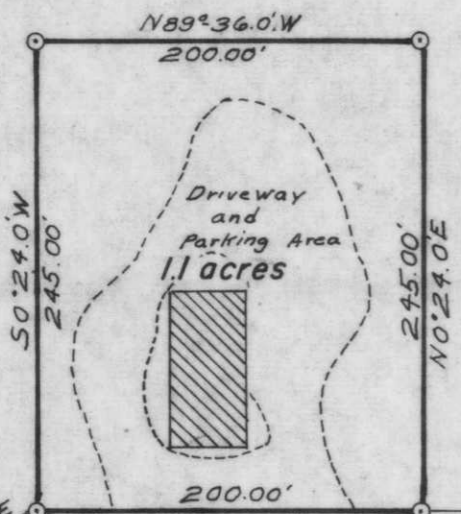


Bearings Solar

○ = Iron rod set
● = Rail Road spike found in place.



"51"
90'
U. S. HIGHWAY

COUNTY TRUNK HIGHWAY "CC"



PK nail in drill hole, found in place (1' north of E.)
2" iron pipe North 45.0'
1/4 Oak N10°W, 99.1'

1/8 Corner
Rail road spike 20' West of the E of Highway "51".
PK nail in Power Pole. N52°E, 64.3'
Northwest corner of concrete base of Merrill Washen Mill Sign. S48°W, 82.0'
W.C.D. brass cap found in place. #1 Spruce S79°E, 33.3'

Part of
Assessors Plat No. 191
of the
City of Tomahawk
in the
**SW 1/4 of the SW 1/4
SECTION 27, T35N, R6E**
Lincoln County, Wisconsin



Scale 1"=100'
October, 1974

Northwoods Surveyors Inc.
John H. Fisher
Land Surveyor

RECEIVED AT LINCOLN COUNTY
COURTHOUSE THIS 27 DAY
OF May 1975.
Patrick R. Raabe
TAX DESCRIPTION OFFICE

B

Drafted by D.M. Mullen

13-27-356