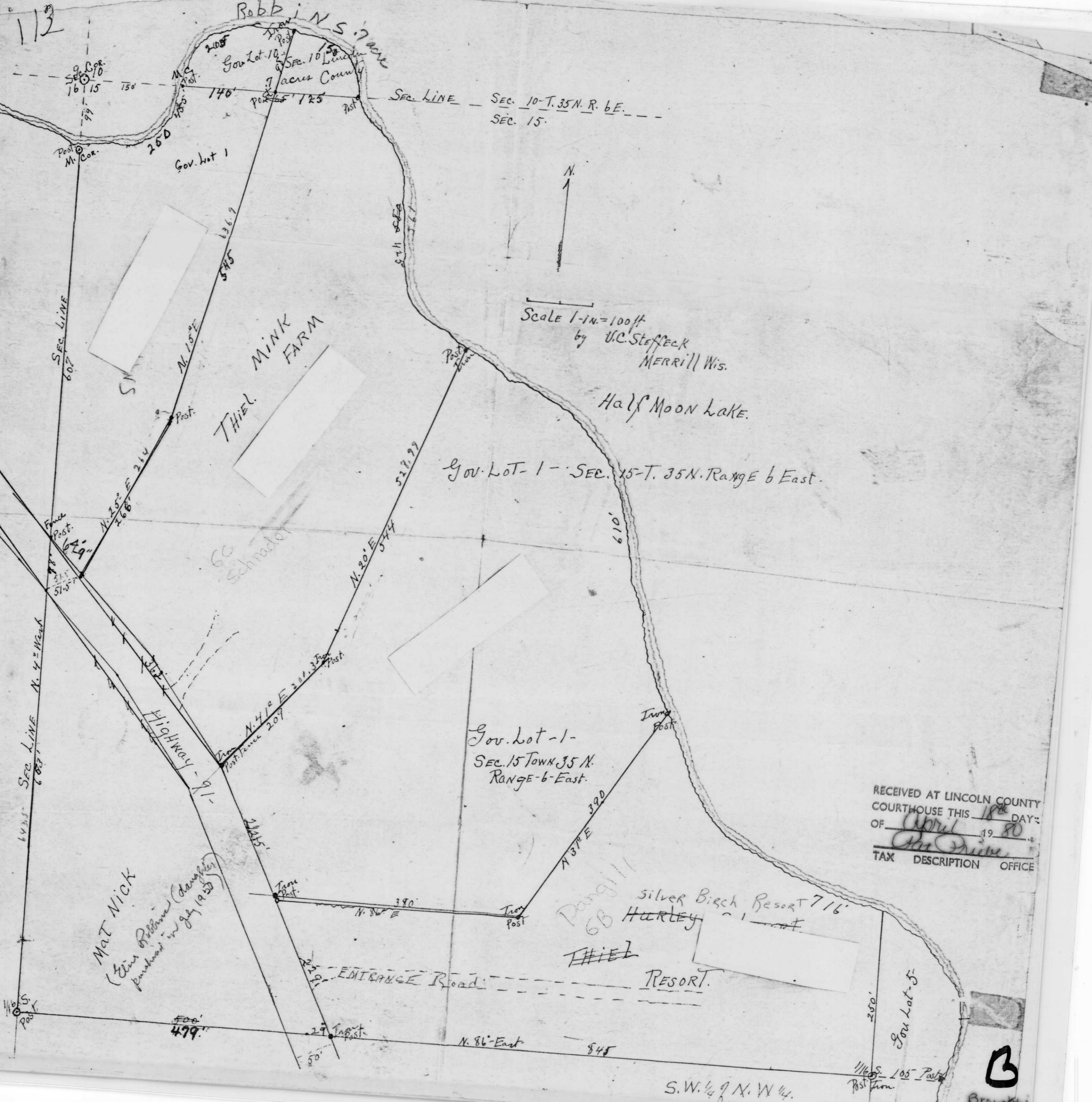


112

Robbins Park



Scale 1-in=100ft
 by U.C. STEFFECK
 MERRILL WIS.

Gov. Lot - 1 - SEC. 15 - T. 35 N. RANGE 6 East.

Gov. Lot - 1 -
 SEC. 15 TOWN 35 N.
 RANGE - 6 - East.

RECEIVED AT LINCOLN COUNTY
 COURTHOUSE THIS 18th DAY OF
 OF April 19 80
 Tax Description Office

MAT NICK
 (Elin Robbins) (daughter)
 purchased in July 1925

Silver Birch Resort 716'
 HURLEY

THIEL
 RESORT.

Gov. Lot - 5

S.W. 1/4 of N. W 1/4

B

Brought in
 4-18-80