

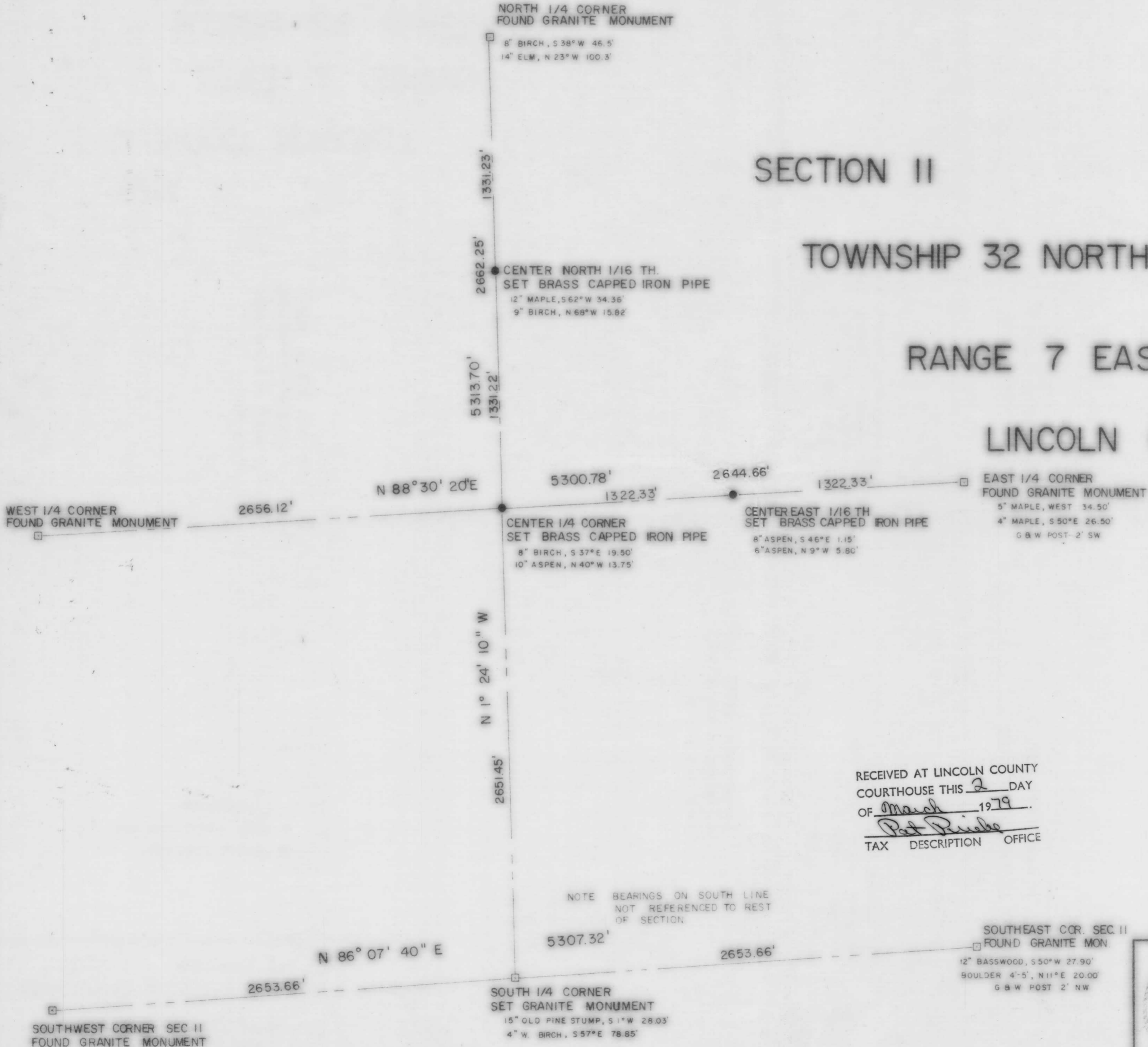
A
M
D
3

SECTION II

TOWNSHIP 32 NORTH

RANGE 7 EAST

LINCOLN COUNTY, WISC.



RECEIVED AT LINCOLN COUNTY
 COURTHOUSE THIS 2 DAY
 OF March 1979
Pat Riecke
 TAX DESCRIPTION OFFICE

NOTE BEARINGS ON SOUTH LINE
 NOT REFERENCED TO REST
 OF SECTION

SOUTHEAST COR. SEC. II
 FOUND GRANITE MON.
 12" BASSWOOD, S 50° W 27.90'
 BOULDER 4'-5", N 11° E 20.00'
 G & W POST 2' NW



LINCOLN COUNTY
 FOREST DEPT.
 MERRILL WISCONSIN
 SCALE 1" = 400' DATE 2/13/79 OWN BY W.I.
 DWG. NO. 6923-4 GENISOT AND ASSOCIATES, INC.
 RHINELANDER, WIS.

SOUTHWEST CORNER SEC II
 FOUND GRANITE MONUMENT

SOUTH 1/4 CORNER
 SET GRANITE MONUMENT
 15" OLD PINE STUMP, S 1° W 28.03'
 4" W. BIRCH, S 57° E 78.85'

EAST 1/4 CORNER
 FOUND GRANITE MONUMENT
 5" MAPLE, WEST 34.50'
 4" MAPLE, S 50° E 26.50'
 G & W POST 2' SW

CENTER EAST 1/16 TH
 SET BRASS CAPPED IRON PIPE
 8" ASPEN, S 46° E 1.15'
 6" ASPEN, N 9° W 5.80'

CENTER 1/4 CORNER
 SET BRASS CAPPED IRON PIPE
 8" BIRCH, S 37° E 19.90'
 10" ASPEN, N 40° W 13.75'

CENTER NORTH 1/16 TH.
 SET BRASS CAPPED IRON PIPE
 12" MAPLE, S 62° W 34.36'
 9" BIRCH, N 68° W 15.82'

NORTH 1/4 CORNER
 FOUND GRANITE MONUMENT
 8" BIRCH, S 38° W 46.5'
 14" ELM, N 23° W 100.3'