

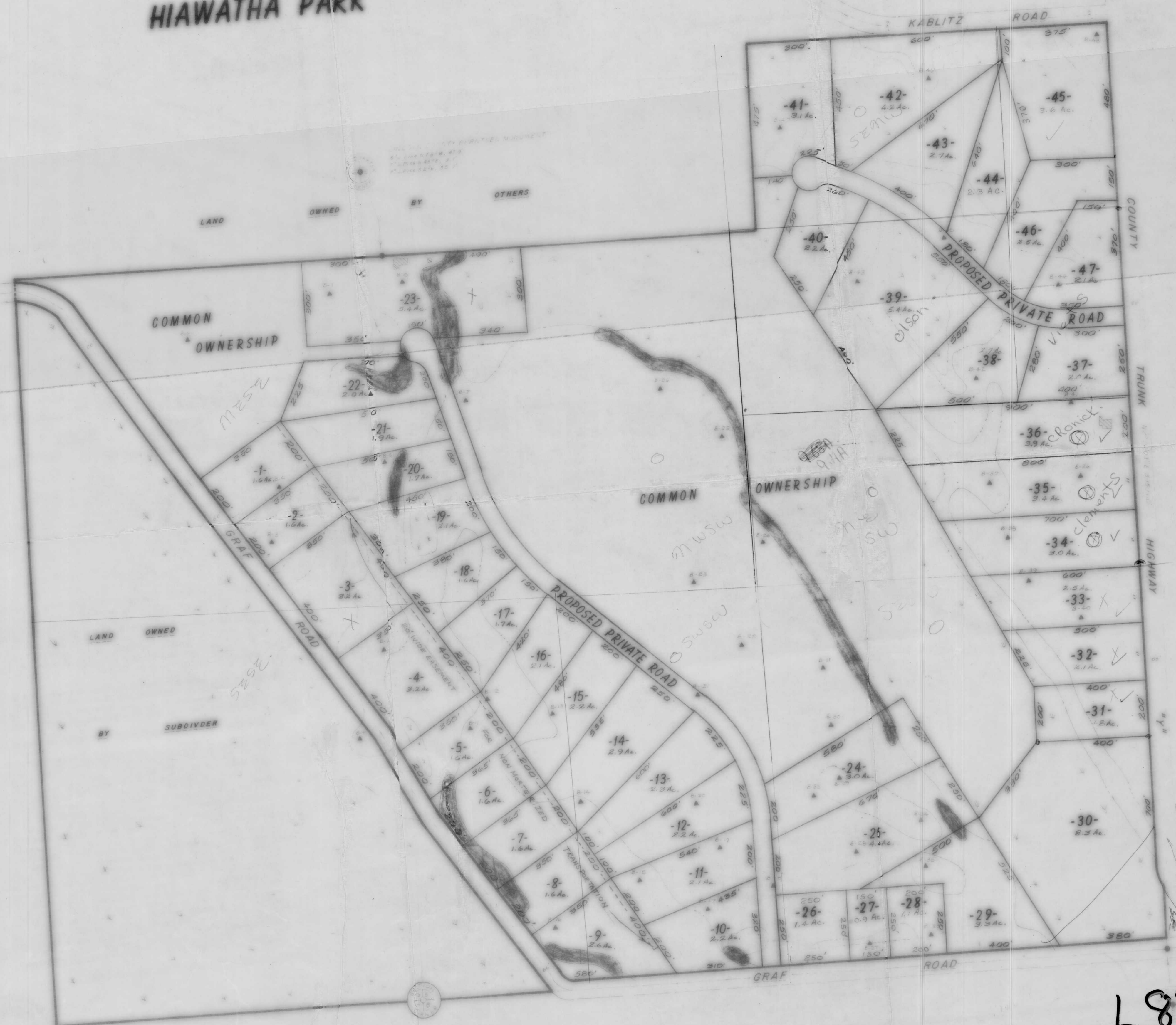
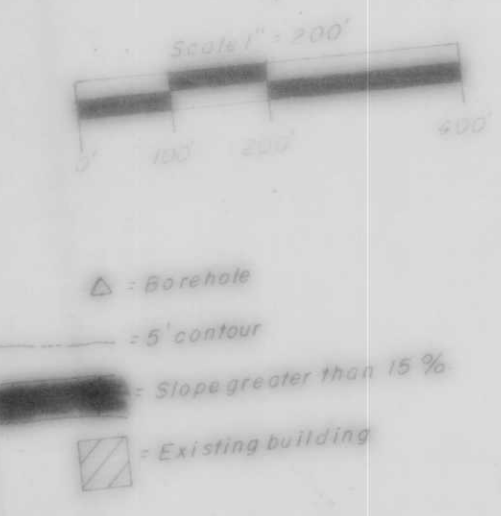
HIAWATHA PARK

PRELIMINARY
 The
SW 1/4
 and the
S 1/2
 of the
SE 1/4 of the NW 1/4
SECTION 5, T35N, R6E
 and all of
NE 1/4 of the SE 1/4
 and the
SE 1/4 of the SE 1/4
SECTION 6, T35N, R6E
 Bradley Township
 Lincoln County, Wisconsin

The locations shown herein are
 accurate and true to the best of my
 knowledge and belief.
John H. Fisher
 John H. Fisher, R.L.S. 5-830
 Date Sept. 16, 1921

The utility lines and contour locations shown
 herein are accurate and true to the best of my
 knowledge and belief.
Robert M. Cutler
 Robert M. Cutler, C. E. 1122
 Date Sep. 16, 1921

JOHN H. FISHER & ASSOCIATES, INC.
 MINOCQUA, WISCONSIN



L83B

RECEIVED
 OCT 19 1921