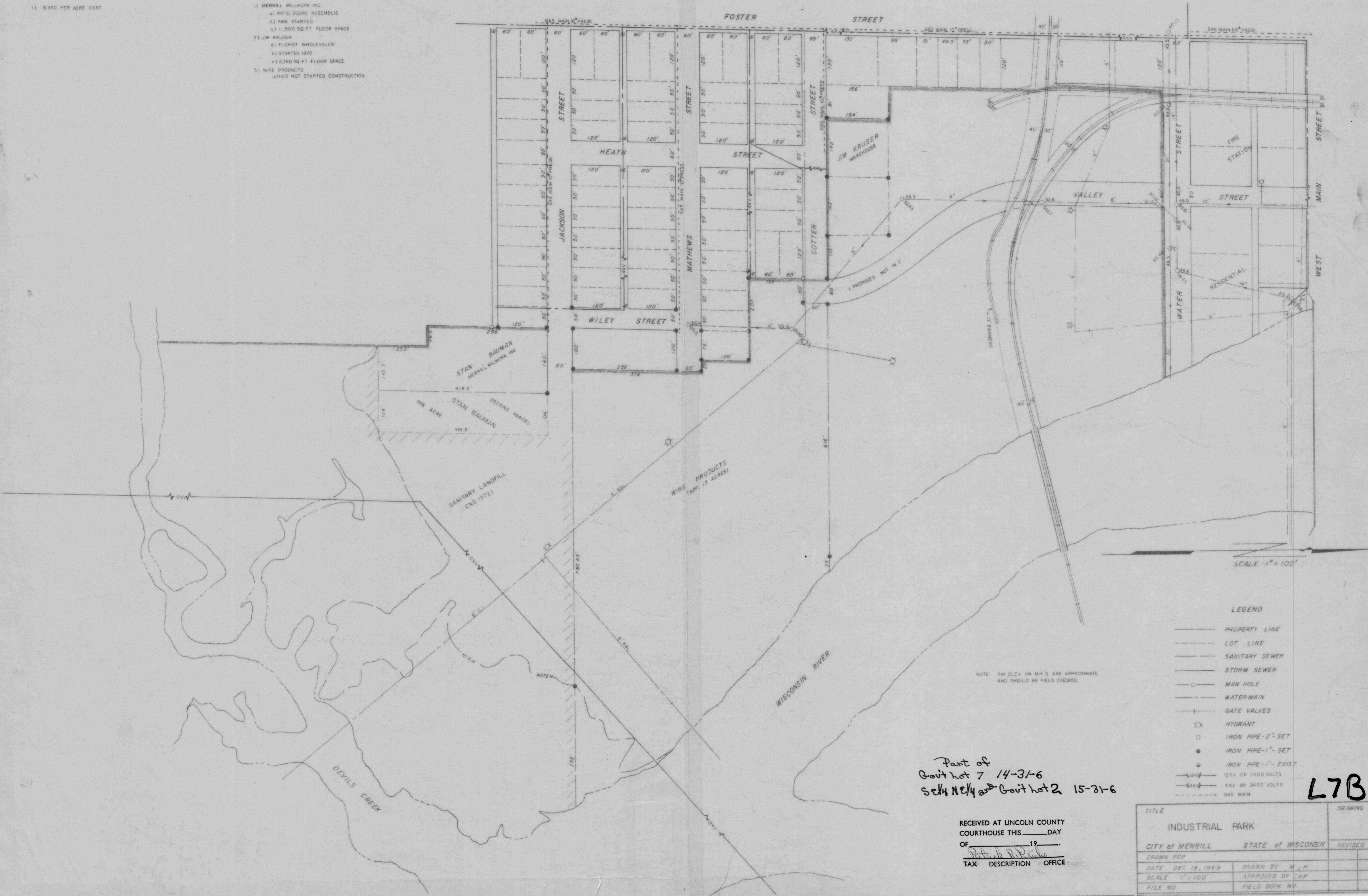


GENERAL INFORMATION

1) \$950 PER ACRE COST

INDUSTRIES

- 1) MERRILL MILLWORK INC
 - a) PATIO DOORS ASSEMBLY
 - b) 1968 STARTED
 - c) 11,500 SQ FT FLOOR SPACE
- 2) JIM KRUGER
 - a) FLORIST WHOLESALER
 - b) STARTED 1970
 - c) 2,160 SQ FT FLOOR SPACE
- 3) WIRE PRODUCTS
 - a) HAS NOT STARTED CONSTRUCTION



LEGEND

- PROPERTY LINE
- - - LOT LINE
- - - SANITARY SEWER
- - - STORM SEWER
- MAN HOLE
- WATER MAIN
- GATE VALVES
- ⊗ HYDRANT
- IRON PIPE - 2" SET
- IRON PIPE - 1" SET
- IRON PIPE - 1" EXIST
- 12KV OR 7200 VOLTS
- 4KV OR 2400 VOLTS
- - - GAS MAIN

NOTE: RIM ELEV ON M.H.'S ARE APPROXIMATE AND SHOULD BE FIELD CHECKED.

Part of
Govt lot 7 14-31-6
S 1/4 NE 1/4 Govt lot 2 15-31-6

L7B

RECEIVED AT LINCOLN COUNTY
COURTHOUSE THIS _____ DAY
OF _____ 19____.
TAX DESCRIPTION OFFICE

TITLE	INDUSTRIAL PARK		DRAWING NO.
CITY of	MERRILL	STATE of	WISCONSIN
DATE	DEC 18, 1969	DRAWN BY	M.J.H.
SCALE	1" = 100'	APPROVED BY	CHP
FILE NO.		FIELD BOOK NO.	