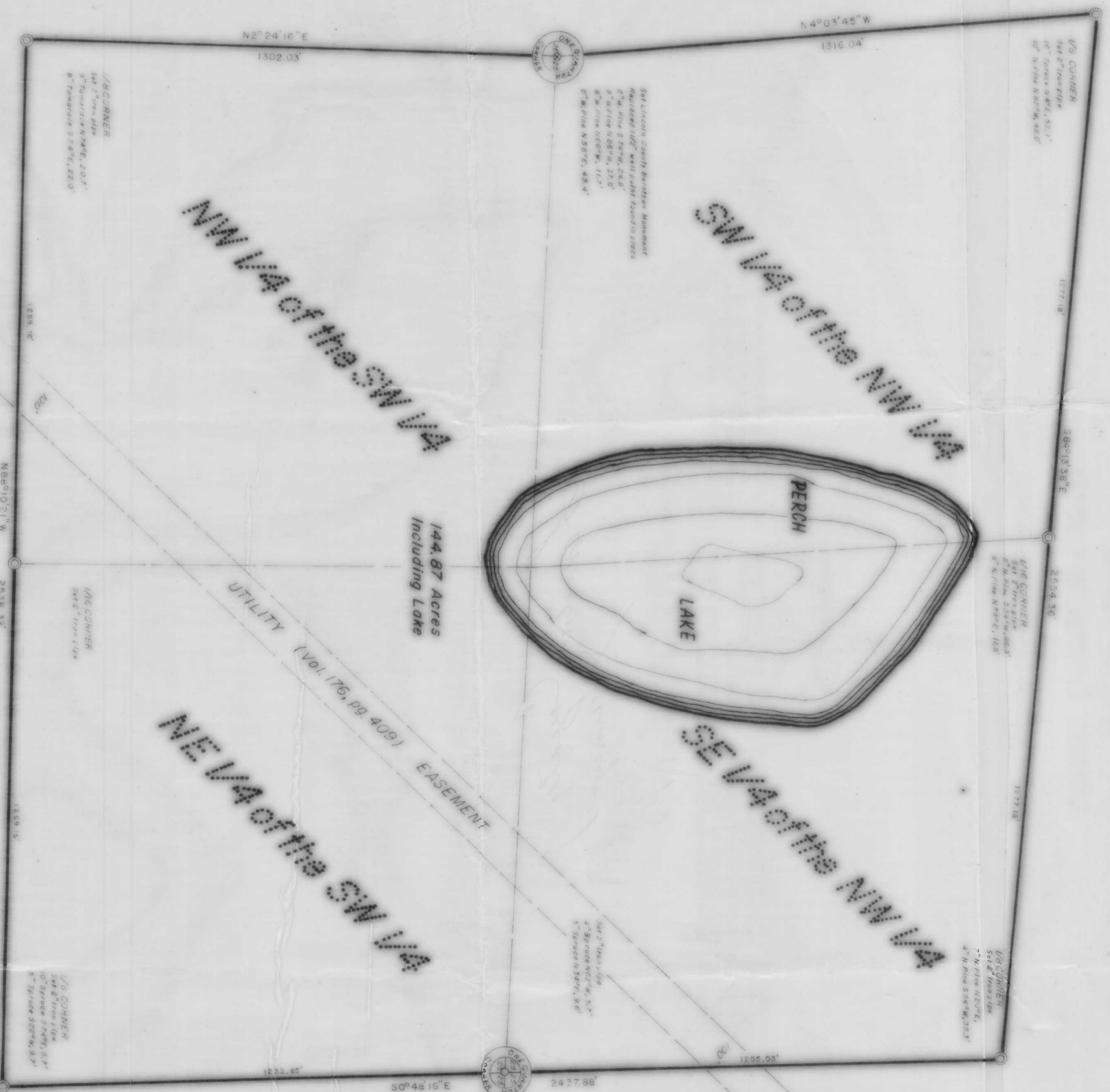


SECTION 25, T35N, R7E
King Township
Lincoln County, Wisconsin

Scale 1" = 400'



DETAIL

The
SW 1/4 of the NW 1/4
the
SE 1/4 of the NW 1/4
the
NE 1/4 of the SW 1/4
and the
NW 1/4 of the SW 1/4
SECTION 25, T35N, R7E
King Township
Lincoln County, Wisconsin

COPIED FROM PLAT 1979

John H. Fisher
John H. Fisher & Associates, Inc.
1979

Lincoln County Registering Land Surveyor's Office
has examined the foregoing plat and finds that the same
complies with the provisions of the Wisconsin Statutes
and the rules and regulations of the Registering Land
Surveyor's Office and that the same is a true and correct
copy of the original as filed with the Registering Land
Surveyor's Office on this 19th day of August, 1979.
John H. Fisher, Registering Land Surveyor

RECEIVED AT LINCOLN COUNTY
COURTHOUSE THIS 19th DAY
OF AUGUST 1979
John H. Fisher
TAX DESCRIPTION OFFICE

