

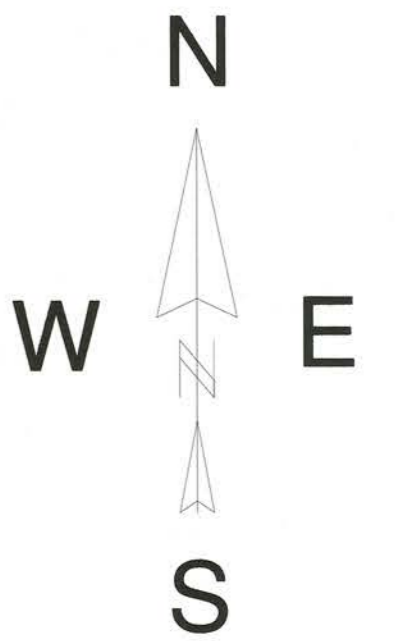
LOCATED IN THE SW 1/4 - SE 1/4, SECTION 11, T32N, R06E, TOWN OF MERRILL, LINCOLN COUNTY, WISCONSIN

I, KEVIN P. BIXBY, PROFESSIONAL LAND SURVEYOR, HEREBY CERTIFY TO MY CLIENT, THAT I HAVE SURVEYED THE ABOVE LANDS AND THAT THE ABOVE MAP IS A TRUE AND CORRECT REPRESENTATION OF THE LANDS SURVEYED TO THE BEST OF MY KNOWLEDGE AND BELIEF. THAT I HAVE COMPLIED WITH THE MINIMUM REQUIREMENTS OF AE-7 OF THE WISCONSIN ADMINISTRATIVE CODE. THAT I HAVE PROVIDED A DESCRIPTION OF THE SUBJECT PARCEL ON THIS PLAT OF SURVEY.

Kevin P. Bixby
KEVIN P. BIXBY DATE 04/25/18



BEARINGS ASSUMED AND REFERENCED AS SHOWN



NORTH 1/4 CORNER SECTION 11 PER LINCOLN COUNTY CORNER FORM E-19, DATED 7/24/00 (EXISTING P.K. NAIL)

SURVEY FOR WILLIAM WENGELER
BIXBY LAND SURVEYING INC.
P.O. BOX 1532
RHINELANDER, WI. 54501
715-362-5263 (LAND)
DWG # 754

SCALE: 1" = 100'
0 50' 100' 200'

LEGEND

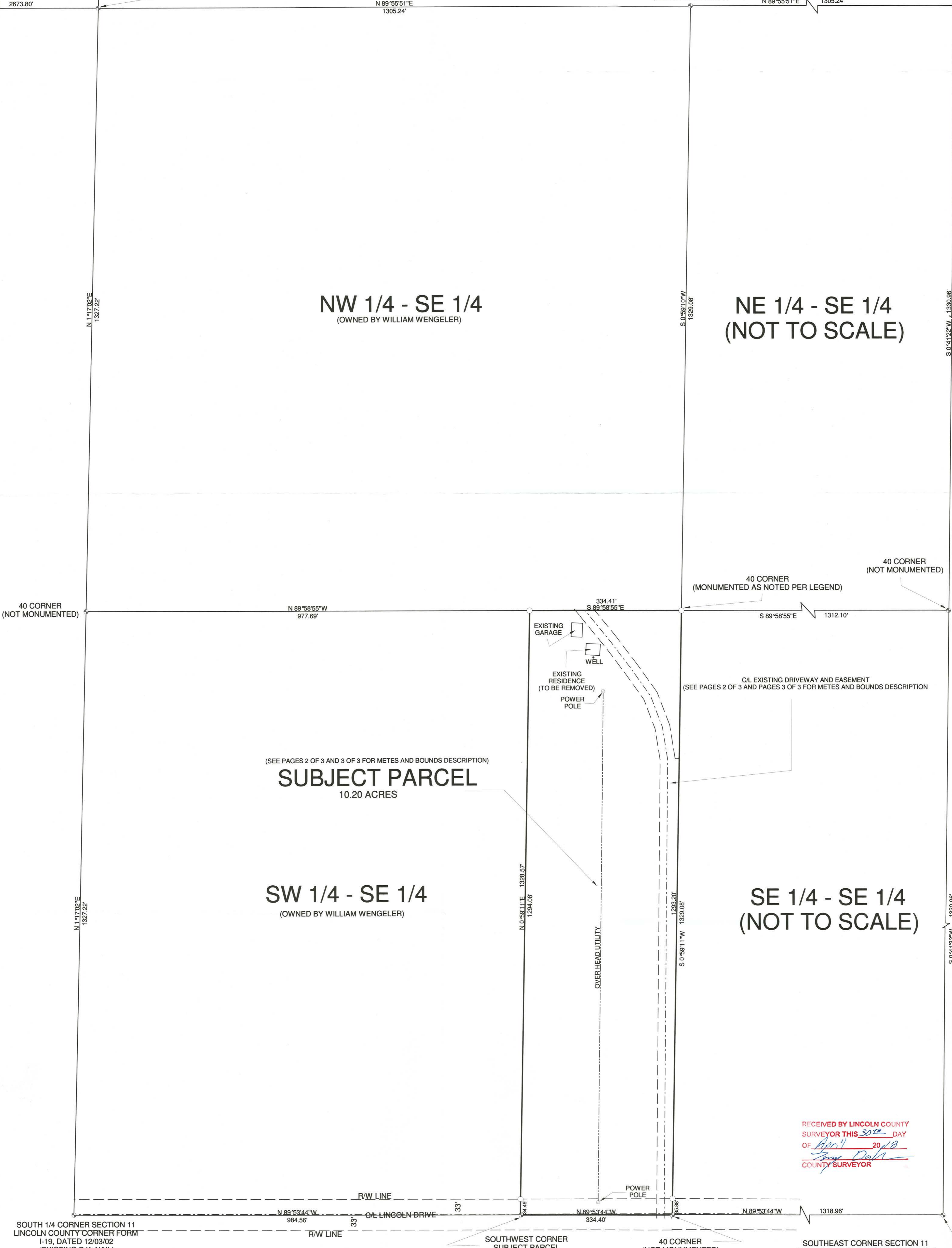
○ SET 1" X 18" IRON PIPE

WEST 1/4 CORNER SECTION 11, CALCULATED POSITION PER LINCOLN COUNTY CORNER FORM G-19, DATED 12/03/02

CENTER 1/4 CORNER SECTION 11 (NOT MONUMENTED)

40 CORNER (NOT MONUMENTED)

EAST 1/4 CORNER SECTION 11, CALCULATED POSITION PER LINCOLN COUNTY CORNER FORM G-21, DATED 06/02/97



NW 1/4 - SE 1/4
(OWNED BY WILLIAM WENGELER)

NE 1/4 - SE 1/4
(NOT TO SCALE)

(SEE PAGES 2 OF 3 AND 3 OF 3 FOR METES AND BOUNDS DESCRIPTION)
SUBJECT PARCEL
10.20 ACRES

SW 1/4 - SE 1/4
(OWNED BY WILLIAM WENGELER)

SE 1/4 - SE 1/4
(NOT TO SCALE)

L 526A

RECEIVED BY LINCOLN COUNTY SURVEYOR THIS 30TH DAY OF April 20 18
Kevin P. Bixby
COUNTY SURVEYOR

SOUTH 1/4 CORNER SECTION 11 LINCOLN COUNTY CORNER FORM I-19, DATED 12/03/02 (EXISTING P.K. NAIL)

SOUTHWEST CORNER SUBJECT PARCEL (CALCULATED POSITION)

40 CORNER (NOT MONUMENTED)

SOUTHEAST CORNER SECTION 11 (CALCULATED POSITION PER LINCOLN COUNTY CORNER FORM I-21, DATED 06/02/97)