

CHECKED: JORDAN G. BROST
DRAWN: TRAVIS OLDS
DATE: SEPTEMBER 21, 2017
PROJECT NO. 17.471

TOPOGRAPHIC SURVEY

SOMERVILLE, INC.
NTC PUBLIC SAFETY BUILDING
CITY OF MERRILL
LINCOLN COUNTY, WISCONSIN

Civil Engineering
Land Surveying
Landscape Architecture
5709 Windy Drive, Suite D
Shevons Point, WI 54482
715.344.9999 (PH) 715.344.9922 (FX)



TOPO

SURVEY LEGEND

- These standard symbols will be found in the drawing.
- SANITARY SEWER
 - STORM SEWER
 - OVERHEAD UTILITIES
 - BURIED ELECTRIC
 - BURIED GAS
 - BURIED TELEPHONE
 - BURIED TELEVISION
 - WATERMAIN
 - FIBER OPTICS
 - FENCE LINE
 - EDGE OF BITUMINOUS
 - CONTOUR LINE
 - RECTANGULAR CATCH BASIN
 - STORM MANHOLE
 - SANITARY MANHOLE
 - SEPTIC VENT
 - WATER VALVE
 - HYDRANT
 - ELECTRIC VAULT
 - ELECTRIC METER
 - ELECTRIC OUTLET
 - ELECTRIC BOX
 - LIGHTPOLE
 - POWERPOLE
 - GAS METER
 - CABLE TV PEDASTAL
 - GUARD POST
 - AIR CONDITIONING UNIT
 - ROOF DRAIN
 - ACCESS BOTTOM
 - SOIL BORING
 - GRAVEL AREA
 - LANDSCAPE AREA
 - RIP RAP AREA
 - WETLAND AREA
 - 3/4" O.D. IRON BAR FOUND
 - 1" O.D. IRON BAR FOUND
 - RAILROAD SPIKE FOUND
 - CALCULATED CORNER
 - MAG NAIL FOUND
 - RECORDED AS

UNDERGROUND UTILITIES

THESE RECORD DRAWINGS HAVE BEEN PREPARED, IN PART, ON THE BASIS OF INFORMATION COMPILED AND FURNISHED BY OTHERS. THE SURVEYOR AND ARCHITECT WILL NOT BE RESPONSIBLE FOR ANY ERRORS OR OMISSIONS WHICH HAVE BEEN INCORPORATED INTO THIS DOCUMENT AS A RESULT.

SOME UTILITIES HAVE BEEN LOCATED BY MAPS PROVIDED BY OTHERS - LOCATIONS ARE APPROXIMATE.

PRIVATE UTILITIES HAVE BEEN LOCATED AND ARE SHOWN ON THIS MAP.

FIELD VERIFY SANITARY AND STORM SEWER PIPE SIZE AND LOCATION.

UNDERGROUND UTILITIES SHOWN ON THIS MAP ARE BASED IN PART ON MARKINGS BY DIGGERS HOTLINE. (TICKET #20173618004)

WETLAND NOTE

WETLANDS SHOWN HEREON WERE DELINEATED BY CHAD FRADETTE, EP, CHEMIST, WDNR PROFESSIONALLY ASSURED WETLAND DELINEATOR WITH ASSISTANCE FROM BENJAMIN LACOUNT, PLS, WETLAND SCIENTIST AND SHYANN NIELAND, ENVIRONMENTAL SPECIALIST. DATED SEPTEMBER 13, 2017.

DESCRIPTION

BEING PART OF LOT 1 OF CERTIFIED SURVEY MAP #2373 LOCATED IN THE SOUTH-WEST 1/4 OF THE SOUTHWEST 1/4 OF SECTION 2, TOWNSHIP 31 NORTH, RANGE 6 EAST, CITY OF MERRILL, LINCOLN COUNTY, WISCONSIN.

BENCH MARK

ELEVATIONS ARE REFERENCED TO NAVD 88 DATUM.

BENCH-MARK #1
BURY BOLT ON HYDRANT LOCATED ON WEST SIDE OF CHAMPAGNE STREET APPROXIMATELY 140 FEET NORTH OF DRIVEWAY.
ELEVATION = 1301.54

BENCH-MARK #2
BURY BOLT ON HYDRANT LOCATED NORTH OF NTC BUILDING, 2ND HYDRANT EAST FROM CHAMPAGNE STREET.
ELEVATION = 1302.14

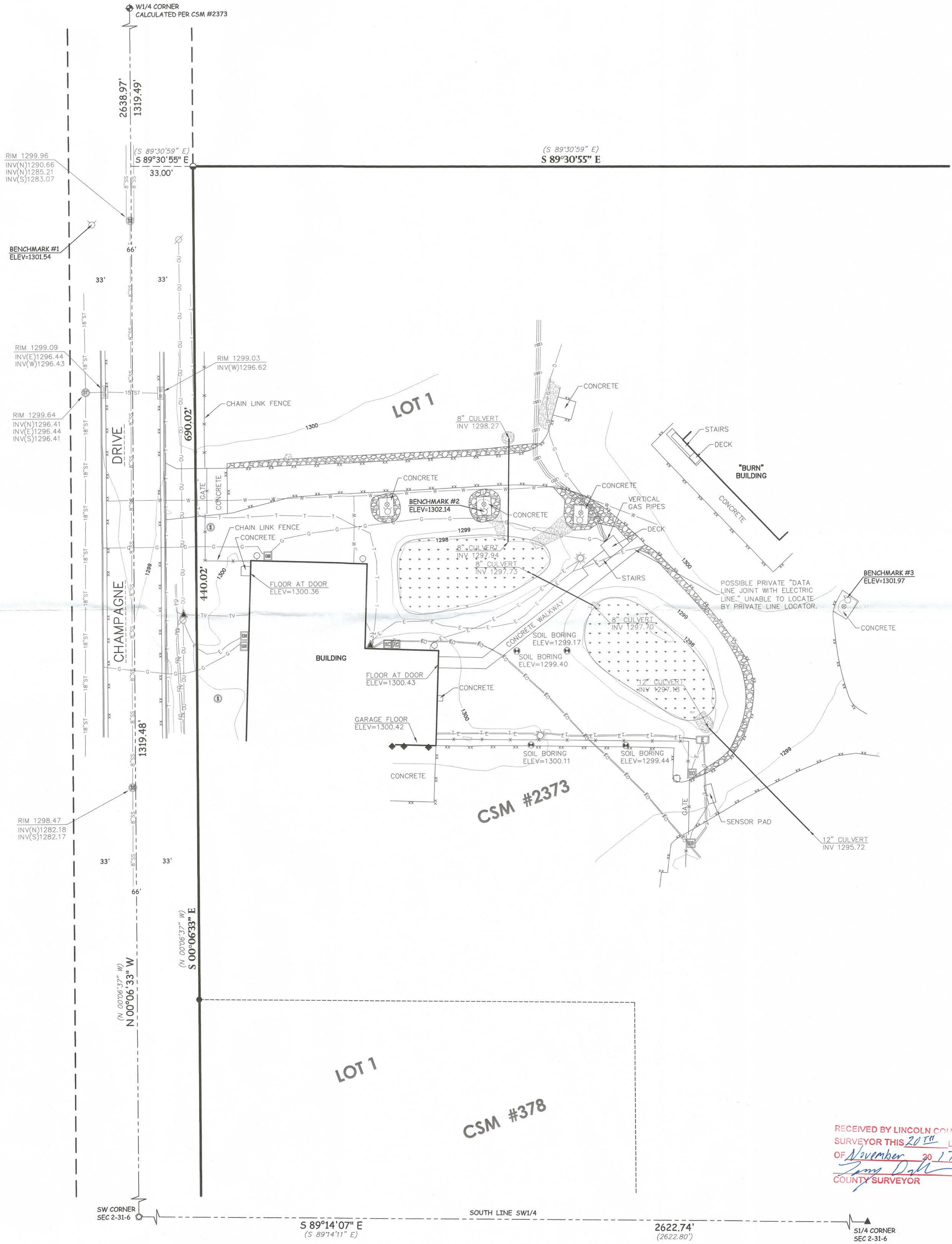
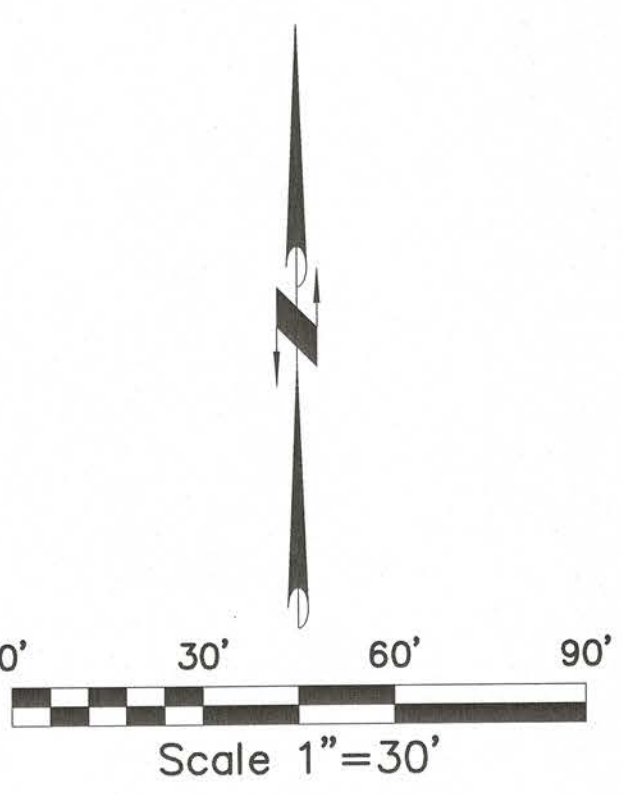
BENCH-MARK #3
BURY BOLT ON HYDRANT LOCATED APPROXIMATELY 50 FEET SOUTHEAST OF "BURN BUILDING".
ELEVATION = 1301.97

SURVEYOR'S CERTIFICATE

I, JORDAN G. BROST, PROFESSIONAL LAND SURVEYOR DO HEREBY CERTIFY THAT THIS IS A TRUE AND CORRECT COPY OF A TOPOGRAPHICAL SURVEY AS DONE UNDER MY DIRECTION ON SEPTEMBER 15, 2017.

DATED THIS 21 DAY OF SEPTEMBER, 2017

Jordan G. Brost
JORDAN G. BROST
PROFESSIONAL LAND SURVEYOR NO. 3009



L523B

RECEIVED BY LINCOLN COUNTY SURVEYOR THIS 20th DAY OF November 20 17
James Dahl
COUNTY SURVEYOR

POINT OF BEGINNING, INC. HOLDS THE RIGHTS TO COPYRIGHT IN AND TO THESE PRINTS, DRAWINGS AND DOCUMENTS. NO REPRODUCTION, COPYING, ALTERATION, MODIFICATION, USAGE, INCORPORATION INTO OTHER DOCUMENTS OR ASSIGNMENT OF THE SAME MAY OCCUR WITHOUT THE PRIOR WRITTEN PERMISSION OF POINT OF BEGINNING, INC.
© 2017 POINT OF BEGINNING, INC.