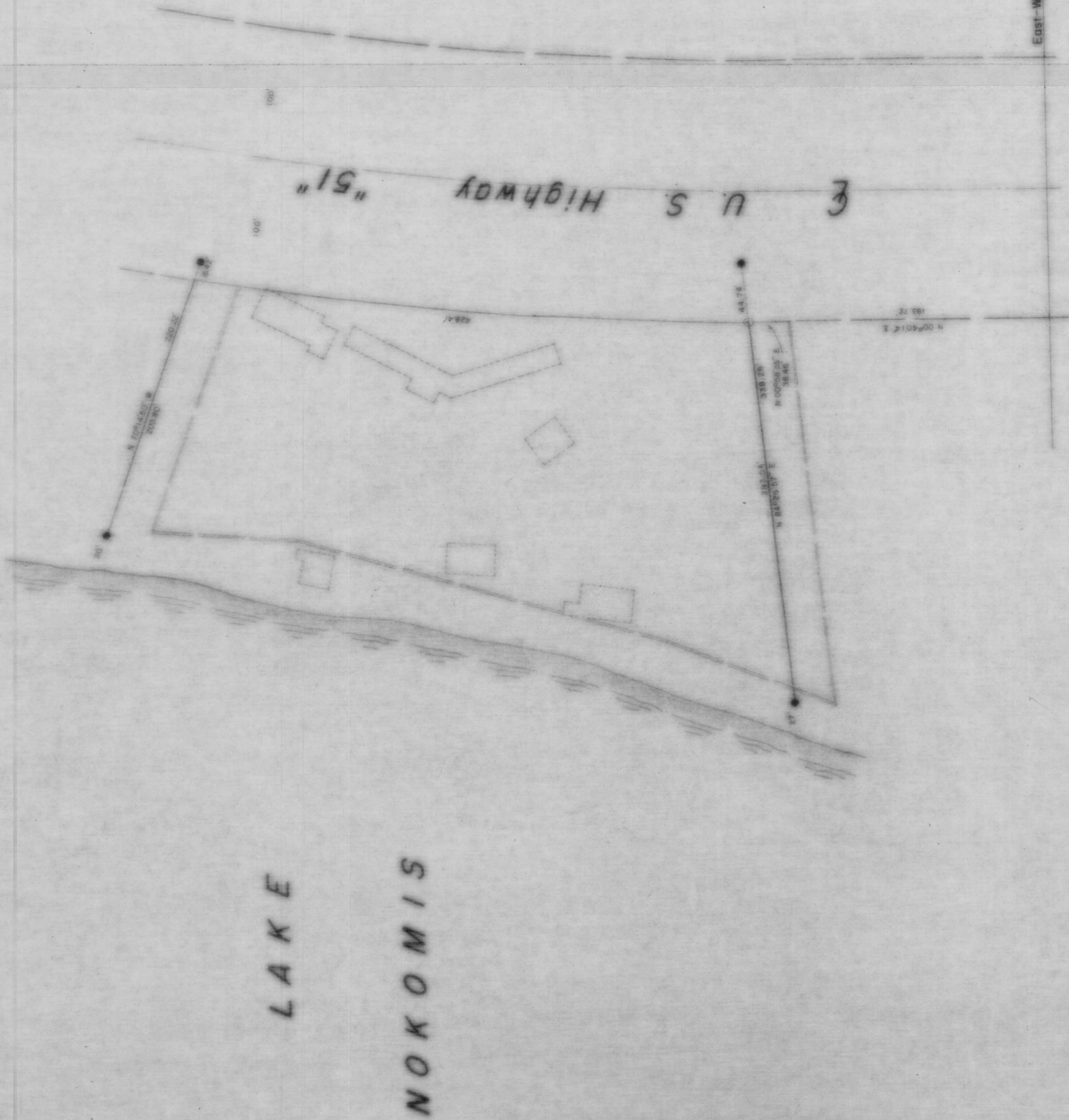




Part of the
 SW 1/4, of the NE 1/4
 SEC. 3, T. 35 N., R. 6 E.
 Town of Bradley
 Lincoln County, Wis.



- LEGEND
- 2" IRON PIPE FOUND
 - ⊙ BERTSEN MONUMENT
 - ENCLOSURES REMOTE BUILDINGS
 - LINE PER DESCRIPTION

RECEIVED AT LINCOLN COUNTY
 COURTHOUSE THIS 3 DAY
 OF 1919.
 TAX DESCRIPTION OFFICE



225