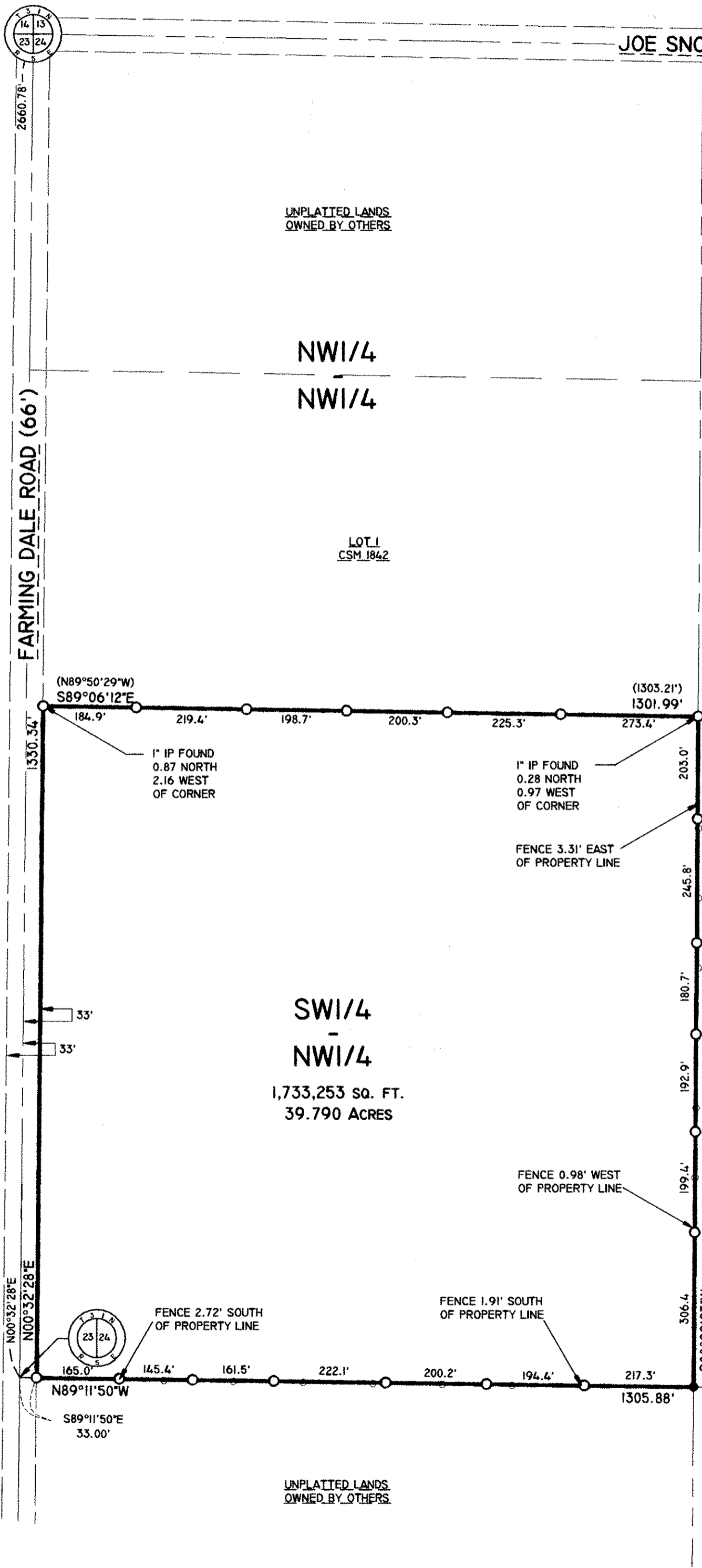


DRAWING FILE: J:\DRAFTING\4955 CORNING\DWG\SURVEY\4955 PLAT OF SURVEY.DWG LAYOUT: MODEL
 PLOTTED: AUG 19, 2008 - 9:32AM PLOTTED BY: JESSER

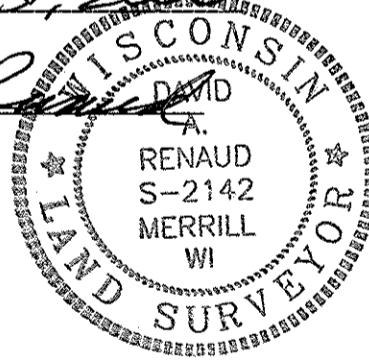


GENERAL NOTES
 1. SECTION CORNER COORDINATE INFORMATION SECTION 24, T31N, R5E, WAS OBTAINED FROM LINCOLN COUNTY AND VERIFIED WITH MEASUREMENTS TO CORNERS, OR TO WITNESS MONUMENTS AS SHOWN ON LAND SURVEY MONUMENT RECORD SHEETS ALSO OBTAINED FROM LINCOLN COUNTY. SURVEYED MEASUREMENTS WERE CONFIRMED WITHIN 0.35' OR LESS FOR ALL SECTION CORNERS USED TO COMPUTE THE BOUNDARIES MAPPED HEREON, AND THEREFORE, WITHIN TOLERANCES ALLOWED BY WISCONSIN ADMINISTRATIVE CODE A-E7, AND THE SECTION CORNER COORDINATE INFORMATION OBTAINED FROM LINCOLN COUNTY WAS USED.
 2. MEASUREMENTS PERFORMED DURING THE COURSE OF THIS SURVEY TO WITNESS MONUMENTS TO THESE SECTION CORNERS ARE SHOWN IN THE SECTION SUMMARY DIAGRAM WITH DISTANCES SHOWN ON THE ABOVE CITED MONUMENT RECORD SHEETS LABELED IN PARENTHESIS.
 3. BEARINGS ARE BASED ON THE LINCOLN COUNTY COORDINATE SYSTEM, NAD83(91) DATUM AND REFERENCED TO THE WEST LINE OF THE NORTHWEST 1/4 OF SECTION 24 MEASURED TO BEAR N00°32'28"E.
 4. THE FIELD SURVEY WAS COMPLETED ON JULY 30, 2008.

SURVEYOR'S CERTIFICATE: I, DAVID A. RENAUD, WISCONSIN REGISTERED LAND SURVEYOR S-2142, DO HEREBY CERTIFY TO THE BEST OF MY KNOWLEDGE AND BELIEF THAT AT THE DIRECTION OF MALLORY AND ZIMMERMAN, SC, AGENTS OF THE PARCEL OF LAND DESCRIBED HEREON, I HAVE SURVEYED AND MAPPED SAID PARCEL IN FULL COMPLIANCE WITH WISCONSIN ADMINISTRATIVE CODE A-E7, AND THAT SAID SURVEY AND MAP ARE CORRECT AND ACCURATE REPRESENTATION THEREOF.

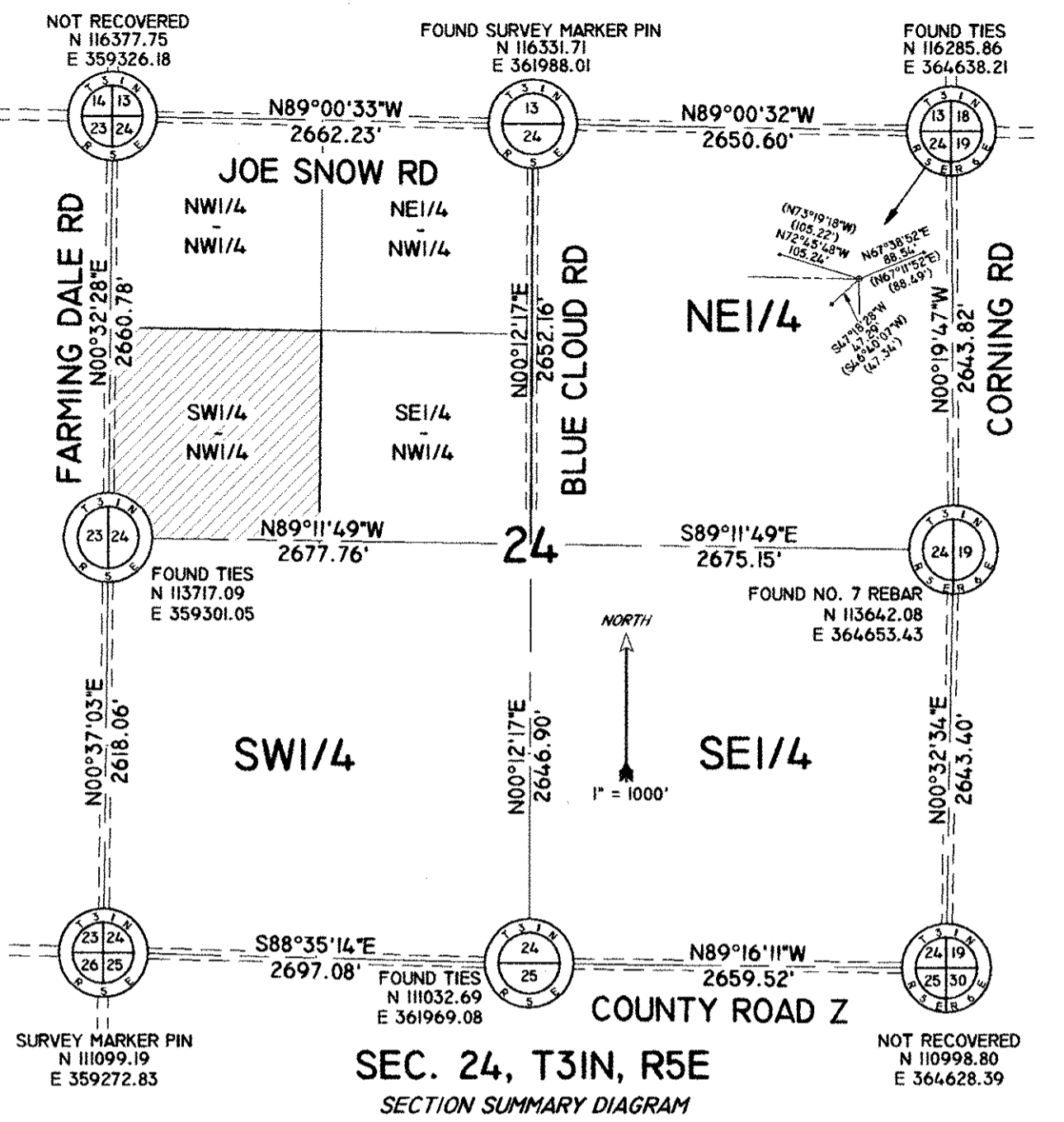
DATED THIS 19th DAY OF August, 2008

David A. Renaud
 REI ENGINEERING, INC.
 DAVID A. RENAUD
 WI R.L.S. S-2142

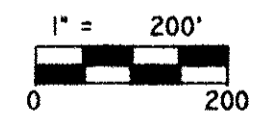
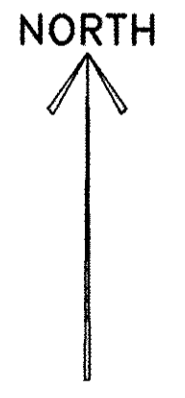


SE 1/4
 NW 1/4
 UNPLATTED LANDS OWNED BY OTHERS

RECEIVED BY LINCOLN COUNTY SURVEYOR THIS 22nd DAY OF August 2008
Tom Dahl
 COUNTY SURVEYOR



PLAT OF SURVEY
 OF THE
 SW 1/4 OF THE NW 1/4
 OF
 SECTION 24
 TOWNSHIP 31 NORTH, RANGE 5 EAST,
 IN THE
 TOWN OF CORNING,
 LINCOLN COUNTY,
 WISCONSIN.



LEGEND

- - FOUND 1-1/4 IN. IRON PIPE
- - 1-1/4 IN. I.D. x 18" IRON PIPE WEIGHING 1.68 LBS/LIN. FT. SET (126') - RECORDED BEARING/LENGTH
- 126.00' - MEASURED BEARING/LENGTH
- ⚡ - VEHICULAR ACCESS POINT

REI
 CIVIL & ENVIRONMENTAL
 ENGINEERING, SURVEYING
 4080 N. 20th AVENUE
 WAUSAU, WISCONSIN 54401
 PHONE: (715) 675-9784 FAX: (715) 675-4060
 EMAIL: mail@REIengineering.com

DESIGNED BY:	CHECKED BY: JR
SURVEYED BY: JR	APPROVED BY: DR
DRAWN BY: DR	DATE: 12/4/07
SHEET	PROJECT No.
1 OF 1	4955

L460B