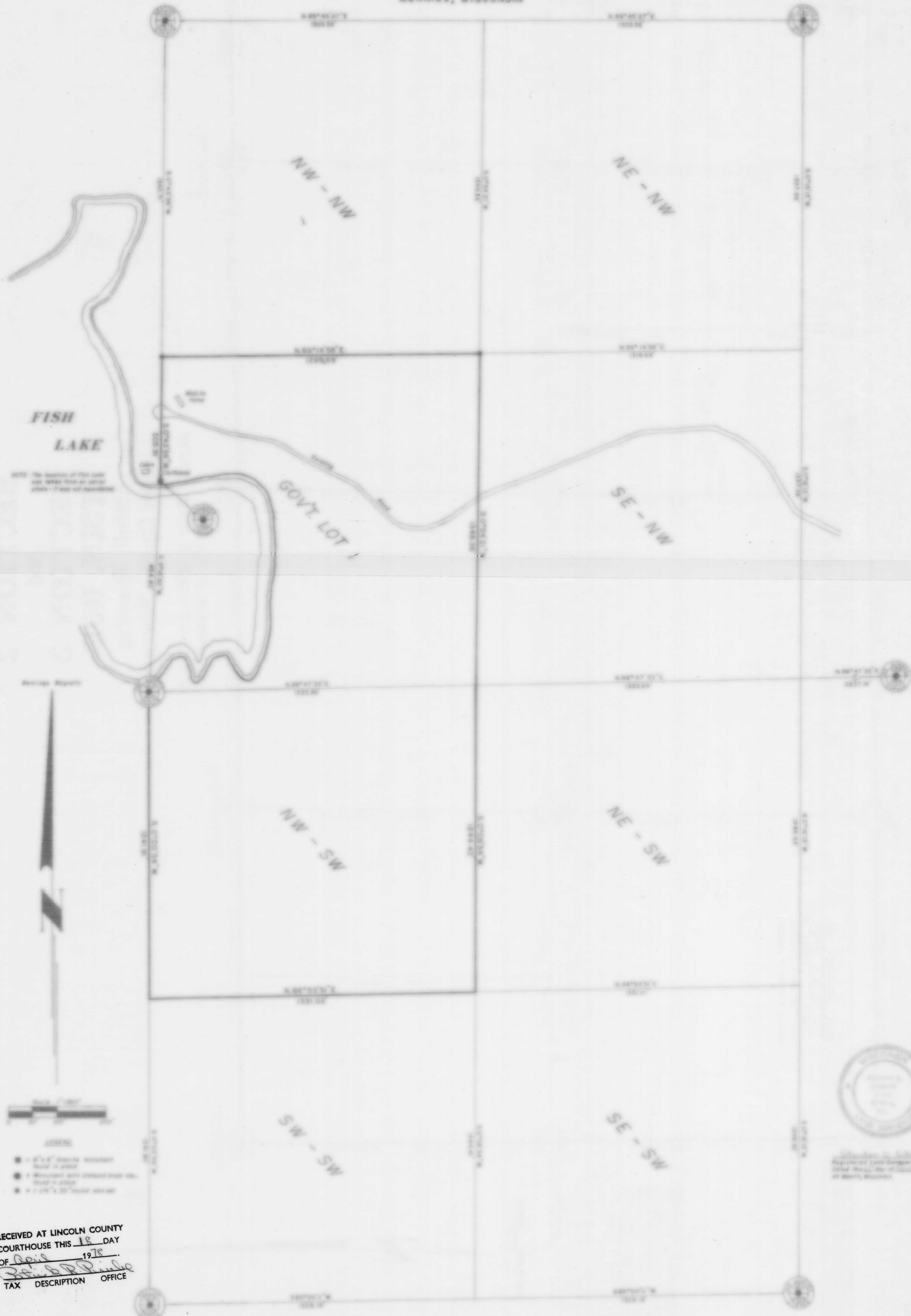


GOV'T. LOT 1
 and the
NW 1/4 of the SW 1/4
SECTION 13, T34N, R8E,

Harrison Township
 Lincoln County, Wisconsin

INMAN, FOLTZ & ASSOCIATES, INC.
 MERRILL, WISCONSIN

145A



FISH LAKE

GOV'T. LOT 1

RECEIVED AT LINCOLN COUNTY
 COURTHOUSE THIS 18 DAY
 OF April 1978.
R. P. P. P.
 TAX DESCRIPTION OFFICE



Lincoln County Register and Clerk
 Register and Clerk
 State Street, Merrill, Wisconsin