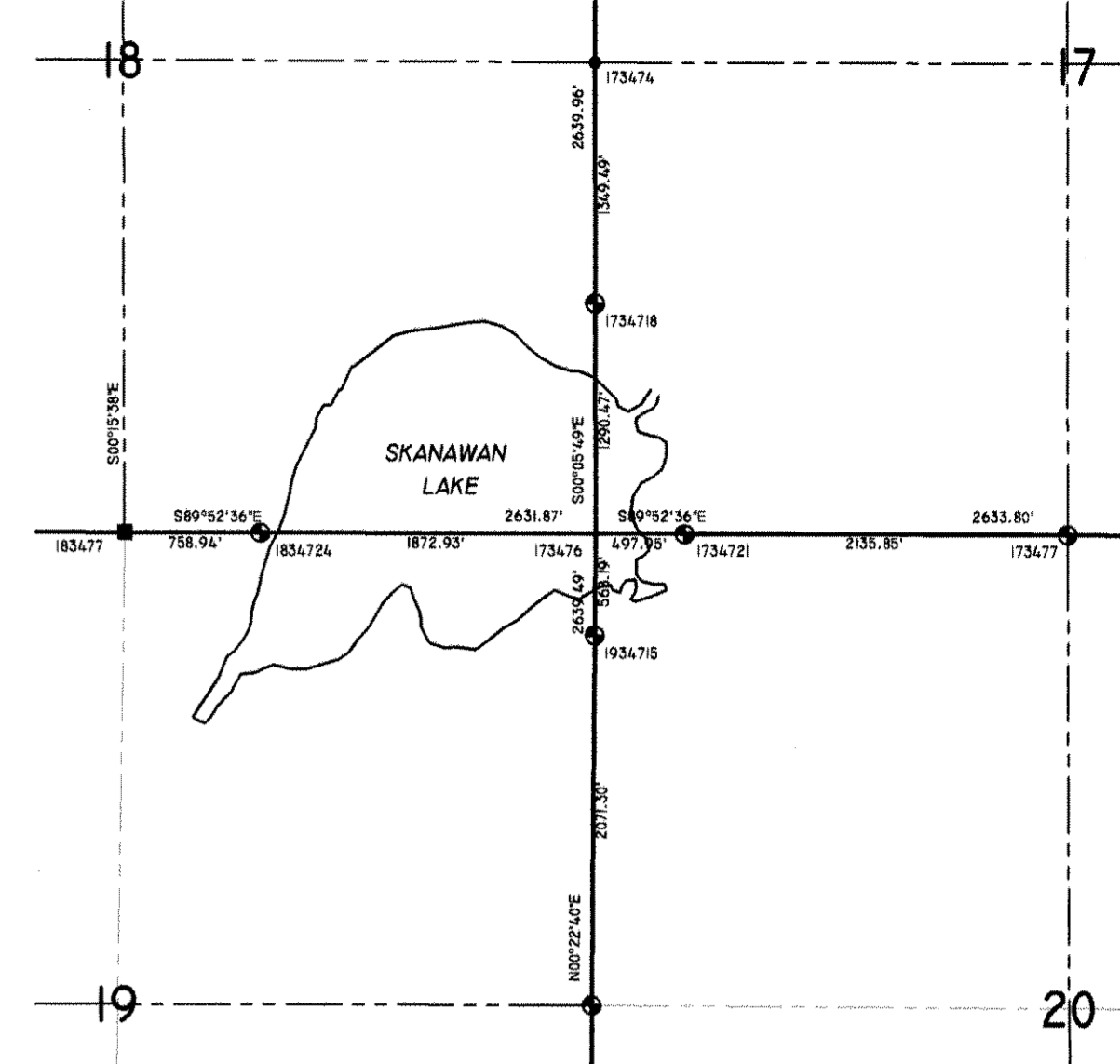


POINT	NORTH	EAST	DESCRIPTION
13471	227039.234	423087.355	SC
13472	227027.074	425832.297	SC
13473	227044.301	428479.428	SC
13474	224495.849	432345.410	STONE
13476	228822.327	423216.927	STONE
13477	228199.597	425859.022	STONE
23471	227065.388	417928.900	SC
23472	227052.311	420508.157	SC
23476	228657.140	417922.404	SC
23477	228199.061	420579.528	FROM TIES
33471	227052.522	412629.988	SC
33472	227058.995	415279.474	SC
33476	224511.811	412629.210	SC
33477	228199.105	412709.907	BERNTSEN
33478	228188.073	415319.459	SC
43471	227043.961	407331.544	SC
43472	227047.464	409980.821	SC
43474	224552.094	407329.493	I-IN IRON BAR
43476	22942.189	407323.545	BERNTSEN
43477	22940.621	410008.533	BERNTSEN
43478	227059.714	412629.988	I-IN LAKE
53472	227036.755	404686.618	MAG NAIL
53474	224576.678	402081.727	BERNTSEN
53476	22949.187	402126.615	Z-IN IRON PIPE
53477	22945.920	404686.618	BERNTSEN
53478	227058.968	402176.654	MNDR COR
63471	227064.439	396708.730	SC
63472	227053.531	394959.541	BERNTSEN
63474	224587.988	394717.286	SC
63476	222035.375	396681.330	SC
63477	222005.810	394442.787	3/4-IN IRON PIPE
73474	219362.388	396659.372	SC
73475	219327.311	402128.754	BERNTSEN
73476	219318.111	402128.754	SC
73477	216700.066	394483.956	BERNTSEN
73478	216685.435	402130.072	BERNTSEN
83475	219355.889	407336.989	BERNTSEN
83477	216677.256	404763.082	I-1/2-IN CAPROD PIPE
83478	216670.153	407390.407	BERNTSEN
93475	219268.311	412749.122	SC
93477	216646.576	410992.496	BERNTSEN
93478	216649.254	412795.888	SC
103475	219240.607	418080.913	BERNTSEN
103477	216610.781	415428.894	SC
103478	216574.011	418083.741	BERNTSEN
113475	219248.358	423191.850	CONC MON
113477	216550.074	420710.530	BERNTSEN
113478	216497.154	423336.345	STONE
123477	216524.357	425921.352	BERNTSEN
123478	216561.579	428506.359	STONE
133476	21211.629	423266.951	CONC MON
133477	21212.071	423944.937	STONE
143476	21139.274	418171.649	MAG NAIL
143477	21127.290	420689.737	CONC MON
153476	211321.537	412812.574	PK NAIL
163474	214025.281	407404.189	Z-IN IRON PIPE
163475	21171.622	407411.449	BERNTSEN
163477	21134.232	410113.835	MAG NAIL
173474	214036.318	402135.480	BERNTSEN
173476	21136.363	402135.912	I-IN LAKE
173477	211390.695	404773.706	BERNTSEN
183474	214064.510	396629.772	SC
183476	214149.101	396602.792	IRON SHAFT
183477	214142.026	396628.050	CONC MON
193474	208767.654	396610.532	SC
193476	208756.930	402122.515	BERNTSEN
193478	20816.200	396616.247	SC
193479	20814.968	402135.397	BERNTSEN
203475	208732.807	407449.071	BERNTSEN
203477	20618.559	404797.227	BERNTSEN
203478	206071.193	407474.772	SC
213475	208699.927	412822.732	BERNTSEN
213477	206060.627	410895.938	BERNTSEN
213478	205645.302	412807.537	MAG NAIL
223475	206684.672	418108.441	BERNTSEN
223477	206029.645	415475.623	BERNTSEN
223478	206013.987	418143.709	I-IN IRON BAR
233476	208991.573	423032.738	STONE
233477	205605.359	420763.712	I-1/2-IN IRON PIPE
233478	205972.462	423319.788	STONE
243477	206026.786	425935.924	STONE
253474	203398.793	423318.881	STONE
253476	200756.108	423315.992	STONE
253477	202819.562	423928.627	STONE
263474	203391.751	418100.983	BERNTSEN
263476	200767.489	418057.715	BERNTSEN
263477	200776.513	420696.061	BERNTSEN
273474	203449.956	412748.810	BERNTSEN
273476	200781.130	412788.078	BERNTSEN
273477	200781.949	415430.713	I-IN IRON PIPE
283474	203430.087	407490.084	BERNTSEN
283476	200789.104	407500.786	REBAR IN CONC
283477	200793.067	410148.150	AL MON
293474	203465.148	402138.033	BERNTSEN
293476	200815.339	402137.697	BERNTSEN
293477	200789.060	404834.053	BERNTSEN
303474	203444.514	396610.942	SC
303476	200812.811	396613.664	SC
313474	198181.611	396607.092	SC
313476	195550.834	396607.851	SC
323475	198154.797	407471.431	BERNTSEN
323477	195517.060	404676.331	BERNTSEN
323478	195518.885	407332.868	STONE
333477	195513.298	409995.180	STONE
333478	195513.355	412645.511	STONE
343475	198181.904	418006.420	I-IN IRON PIPE
343477	195504.564	418302.305	STONE
343478	195504.970	417644.101	BERNTSEN
353475	198127.295	423334.983	STONE
353477	195413.311	420661.702	STONE
353478	195405.671	423260.740	BERNTSEN
363477	195521.025	425904.765	STONE
363478	195515.266	428463.896	SC
373475	225839.400	402059.988	BERNTSEN
373476	227045.242	410283.305	AL MON
373478	212686.832	402137.731	BERNTSEN
373479	211395.291	402637.859	BERNTSEN
383474	211400.393	400266.992	BERNTSEN
383475	208183.382	402126.107	BERNTSEN
383476	206068.602	402126.993	BERNTSEN



DETAIL, SKANAWAN LAKE MEANDER CORNERS
SCALE: 1"=1000'

LEGEND	
●	- BERNTSEN MONUMENT
○	- 1" IRON PIPE
●	- 1" IRON BAR
▲	- MAG NAIL
▲	- PK NAIL
■	- STONE MONUMENT
■	- CONCRETE MONUMENT
○	- 1-1/2" IRON PIPE
⊗	- 2" IRON PIPE
⊙	- ALUMINUM MONUMENT
SC	- (OR AS NOTED)
SC	- SECTION CORNER

NOTES:
COORDINATES AND BEARINGS ARE REFERENCED TO THE LINCOLN COUNTY COORDINATE SYSTEM AS DEVELOPED BY THE WISCONSIN DEPARTMENT OF TRANSPORTATION AND ARE BASED ON GPS OBSERVATION OF CONTROL POINTS AS SUPPLIED BY THE WDOT AND LINCOLN COUNTY.

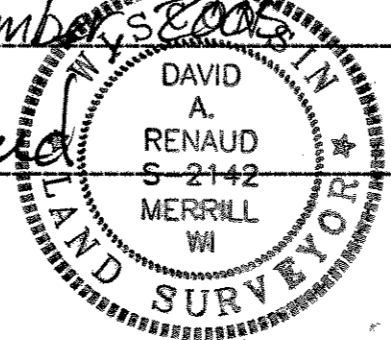
MONUMENT TYPES NOTED ARE AS FOUND AT THE TIME OF THE SURVEY (SUMMER & FALL, 2005). CORNERS IDENTIFIED BY THE DESCRIPTION 'SC' WERE NOT MEASURED OR SURVEYED; COORDINATE LOCATIONS OF THESE CORNERS ARE AS FOUND ON RECORDS ON FILE AT THE LINCOLN COUNTY SURVEYOR'S OFFICE.

SEE SECTION CORNER MONUMENTATION RECORD SHEETS AND SECTION SUMMARY DIAGRAMS FILED WITH THE LINCOLN COUNTY SURVEYOR'S OFFICE IN CONJUNCTION WITH THIS MAP.

RECEIVED BY LINCOLN COUNTY SURVEYOR THIS 19th DAY OF December 20 05
Terry Daulton
COUNTY SURVEYOR

SURVEYOR'S CERTIFICATE
I, DAVID A. RENAUD, WISCONSIN REGISTERED LAND SURVEYOR S-2142, DO HEREBY CERTIFY THAT AT THE DIRECTION OF LINCOLN COUNTY, I HAVE MADE THIS SURVEY AND MAP THEREOF, AND THAT THIS MAP IS A CORRECT AND ACCURATE REPRESENTATION OF THE LANDS SURVEYED.

DATED THIS 19th DAY OF December 2005
David Renaud
REI DAVID A. RENAUD (AGENT)
WI RLS S-2142



L411A

REI
CIVIL & ENVIRONMENTAL
ENGINEERING, SURVEYING
4080 N. 20th AVENUE
WAUSAU, WISCONSIN 54401
PHONE: (715) 675-9784 FAX: (715) 675-4060
EMAIL: mail@REIengineering.com

LINCOLN COUNTY
TOWN OF SKANAWAN
TOWNSHIP 34 NORTH
RANGE 7 EAST

DESIGNED BY:	CHECKED BY: DAR		
SURVEYED BY:	APPROVED BY:		
DRAWN BY: MFL	DATE: 12/8/05		
DATE	REVISION	BY	CHK'D
SHEET		PROJECT No.	
1 OF 1		3345	