

LEGAL DESCRIPTION

PARCEL A OF CERTIFIED SURVEY MAP NO. 988, DATED NOVEMBER 19, 1996 RECORDED NOVEMBER 19, 1996, IN VOLUME 5 OF CERTIFIED SURVEY MAPS, PAGE 14, AS LOCATED IN DOCUMENT NO. 353754, BEING A PART OF THE SOUTHWEST QUARTER OF THE NORTHWEST QUARTER, SECTION TWENTY-SEVEN (27), TOWNSHIP THIRTY-FIVE (35) NORTH, OF RANGE SIX (6) EAST, CITY OF TOMAHAWK, LINCOLN COUNTY, WISCONSIN.

SAID PARCEL OF LAND CONTAINS 20,734 SQUARE FEET, 0.476 ACRES OF LAND MORE OR LESS.

PN NO.: 35,286.4, 3506.271, 0022
TAX PARCEL NO.: 36,0048,001,776,04,00

LOCATION SKETCH



ZONING AND RESTRICTIONS:

PARCEL IS ZONED - B1 - BUSINESS
BUILDING HEIGHT - 45'
FRONT YARD - 25'
SIDE YARD - 15' PLUS AN ADDITIONAL 5' FOR EACH ADDITIONAL STORY SETBACKS IDENTIFIED ON MAP ARE THOSE BASED ON THE ZONING CODE INFORMATION AS PROVIDED BY THE CITY CLERK

PARKING INFORMATION:

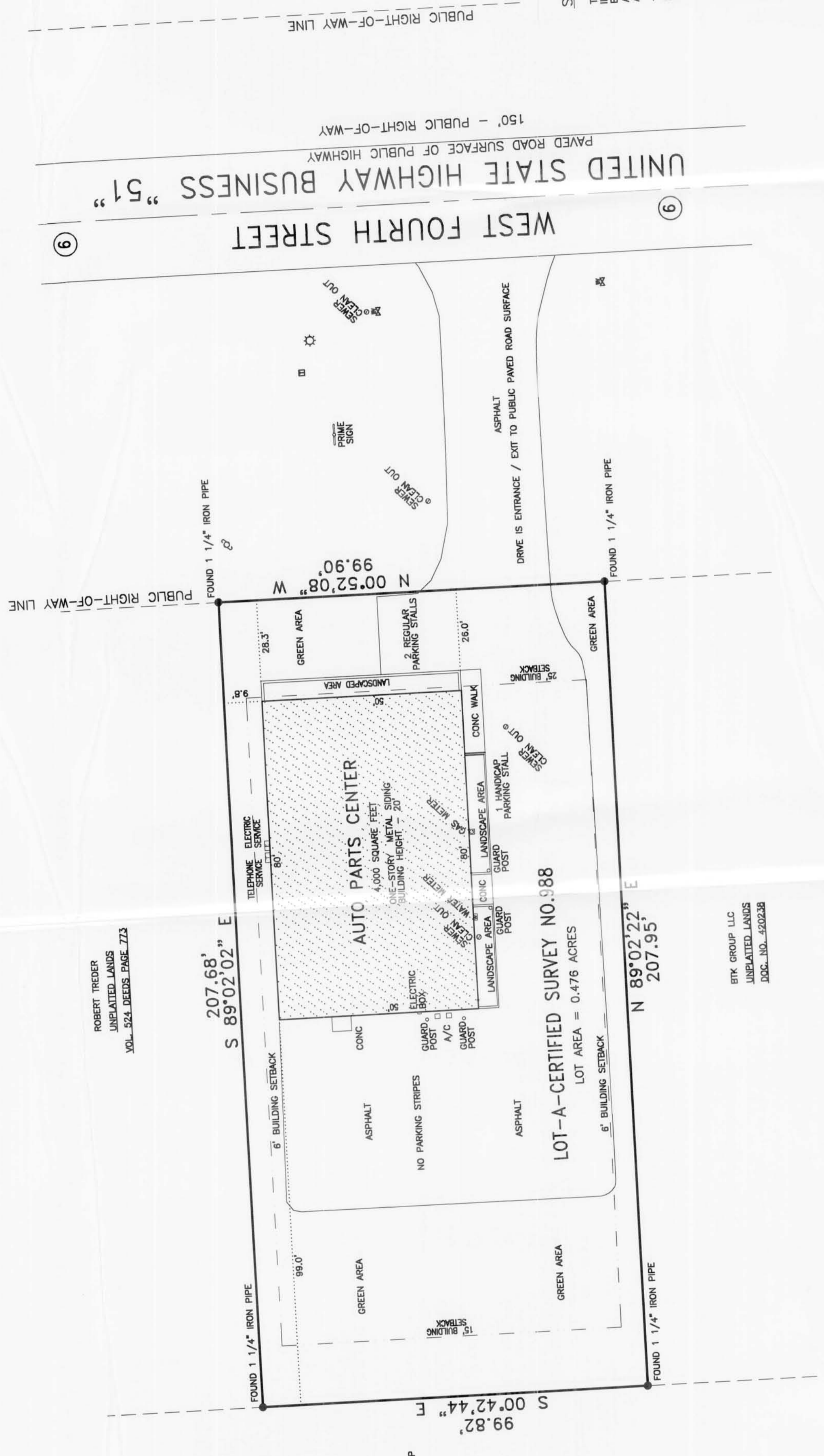
REQUIREMENTS ARE 15 STALLS PER 200 SQUARE FEET OF BUILDING SPACE. PARKING INFORMATION AS PROVIDED BY THE CITY CLERK
NO STALLS WERE STRIPED ON PROPERTY

ENCROACHMENTS:

VISIBLE ENCROACHMENTS WERE LOCATED ON PARCEL. PRIME SIGN IS LOCATED IN PUBLIC RIGHT-OF-WAY

SCHEDULE B - SECTION II EXCEPTIONS:

NOTES CORRESPONDING TO SCHEDULE B-II ITEMS PER TITLE COMMITMENT BY STEWART TITLE GUARANTY COMPANY COMMITMENT NO. 05140317.
6 - HIGHWAY GRANTED TO LINCOLN COUNTY ... DOCUMENT NO. 198312 IDENTIFIED ON MAP - EXISTING ROAD
9 - EASEMENTS, SETBACK LINES ... CERTIFIED SURVEY MAP NO. 988 ... DOCUMENT NO. 353754 IDENTIFIES EXISTING UTILITIES, NO EASEMENTS OR SETBACKS WERE IDENTIFIED



SURVEYOR CERTIFICATION:

THE UNDERSIGNED HEREBY CERTIFIES, AS OF DATE 27, 2005, TO 2005 ILLICIT THE INTERNATIONAL GREAT PLAINS TRUSTEE AND ITS SUCCESSORS BANK NATIONAL AND STEWART TITLE GUARANTY COMPANY ARE A FULLY REGISTERED LAND SURVEYOR OF THE STATE OF WISCONSIN; THAT THIS MAP OR PLAT AND THE SURVEY ON WHICH IT IS BASED WAS MADE IN ACCORDANCE WITH MINIMUM STANDARD REGULATIONS FOR ALTA/ACSM LAND TITLE SURVEYS, AS ESTABLISHED AND ADOPTED BY ALTA/ACSM ADJUSTED IN 1999, AND INCLUDES ITEMS 1, 2, 3, 4, 5, 6, 7, 8, 9, 10, 11, 12, 13, 14, 15, 16, 17, 18, 19, 20, 21, 22, 23, 24, 25, 26, 27, 28, 29, 30, 31, 32, 33, 34, 35, 36, 37, 38, 39, 40, 41, 42, 43, 44, 45, 46, 47, 48, 49, 50, 51, 52, 53, 54, 55, 56, 57, 58, 59, 60, 61, 62, 63, 64, 65, 66, 67, 68, 69, 70, 71, 72, 73, 74, 75, 76, 77, 78, 79, 80, 81, 82, 83, 84, 85, 86, 87, 88, 89, 90, 91, 92, 93, 94, 95, 96, 97, 98, 99, 100, 101, 102, 103, 104, 105, 106, 107, 108, 109, 110, 111, 112, 113, 114, 115, 116, 117, 118, 119, 120, 121, 122, 123, 124, 125, 126, 127, 128, 129, 130, 131, 132, 133, 134, 135, 136, 137, 138, 139, 140, 141, 142, 143, 144, 145, 146, 147, 148, 149, 150, 151, 152, 153, 154, 155, 156, 157, 158, 159, 160, 161, 162, 163, 164, 165, 166, 167, 168, 169, 170, 171, 172, 173, 174, 175, 176, 177, 178, 179, 180, 181, 182, 183, 184, 185, 186, 187, 188, 189, 190, 191, 192, 193, 194, 195, 196, 197, 198, 199, 200, 201, 202, 203, 204, 205, 206, 207, 208, 209, 210, 211, 212, 213, 214, 215, 216, 217, 218, 219, 220, 221, 222, 223, 224, 225, 226, 227, 228, 229, 230, 231, 232, 233, 234, 235, 236, 237, 238, 239, 240, 241, 242, 243, 244, 245, 246, 247, 248, 249, 250, 251, 252, 253, 254, 255, 256, 257, 258, 259, 260, 261, 262, 263, 264, 265, 266, 267, 268, 269, 270, 271, 272, 273, 274, 275, 276, 277, 278, 279, 280, 281, 282, 283, 284, 285, 286, 287, 288, 289, 290, 291, 292, 293, 294, 295, 296, 297, 298, 299, 300, 301, 302, 303, 304, 305, 306, 307, 308, 309, 310, 311, 312, 313, 314, 315, 316, 317, 318, 319, 320, 321, 322, 323, 324, 325, 326, 327, 328, 329, 330, 331, 332, 333, 334, 335, 336, 337, 338, 339, 340, 341, 342, 343, 344, 345, 346, 347, 348, 349, 350, 351, 352, 353, 354, 355, 356, 357, 358, 359, 360, 361, 362, 363, 364, 365, 366, 367, 368, 369, 370, 371, 372, 373, 374, 375, 376, 377, 378, 379, 380, 381, 382, 383, 384, 385, 386, 387, 388, 389, 390, 391, 392, 393, 394, 395, 396, 397, 398, 399, 400, 401, 402, 403, 404, 405, 406, 407, 408, 409, 410, 411, 412, 413, 414, 415, 416, 417, 418, 419, 420, 421, 422, 423, 424, 425, 426, 427, 428, 429, 430, 431, 432, 433, 434, 435, 436, 437, 438, 439, 440, 441, 442, 443, 444, 445, 446, 447, 448, 449, 450, 451, 452, 453, 454, 455, 456, 457, 458, 459, 460, 461, 462, 463, 464, 465, 466, 467, 468, 469, 470, 471, 472, 473, 474, 475, 476, 477, 478, 479, 480, 481, 482, 483, 484, 485, 486, 487, 488, 489, 490, 491, 492, 493, 494, 495, 496, 497, 498, 499, 500, 501, 502, 503, 504, 505, 506, 507, 508, 509, 510, 511, 512, 513, 514, 515, 516, 517, 518, 519, 520, 521, 522, 523, 524, 525, 526, 527, 528, 529, 530, 531, 532, 533, 534, 535, 536, 537, 538, 539, 540, 541, 542, 543, 544, 545, 546, 547, 548, 549, 550, 551, 552, 553, 554, 555, 556, 557, 558, 559, 560, 561, 562, 563, 564, 565, 566, 567, 568, 569, 570, 571, 572, 573, 574, 575, 576, 577, 578, 579, 580, 581, 582, 583, 584, 585, 586, 587, 588, 589, 590, 591, 592, 593, 594, 595, 596, 597, 598, 599, 600, 601, 602, 603, 604, 605, 606, 607, 608, 609, 610, 611, 612, 613, 614, 615, 616, 617, 618, 619, 620, 621, 622, 623, 624, 625, 626, 627, 628, 629, 630, 631, 632, 633, 634, 635, 636, 637, 638, 639, 640, 641, 642, 643, 644, 645, 646, 647, 648, 649, 650, 651, 652, 653, 654, 655, 656, 657, 658, 659, 660, 661, 662, 663, 664, 665, 666, 667, 668, 669, 670, 671, 672, 673, 674, 675, 676, 677, 678, 679, 680, 681, 682, 683, 684, 685, 686, 687, 688, 689, 690, 691, 692, 693, 694, 695, 696, 697, 698, 699, 700, 701, 702, 703, 704, 705, 706, 707, 708, 709, 710, 711, 712, 713, 714, 715, 716, 717, 718, 719, 720, 721, 722, 723, 724, 725, 726, 727, 728, 729, 730, 731, 732, 733, 734, 735, 736, 737, 738, 739, 740, 741, 742, 743, 744, 745, 746, 747, 748, 749, 750, 751, 752, 753, 754, 755, 756, 757, 758, 759, 760, 761, 762, 763, 764, 765, 766, 767, 768, 769, 770, 771, 772, 773, 774, 775, 776, 777, 778, 779, 780, 781, 782, 783, 784, 785, 786, 787, 788, 789, 790, 791, 792, 793, 794, 795, 796, 797, 798, 799, 800, 801, 802, 803, 804, 805, 806, 807, 808, 809, 810, 811, 812, 813, 814, 815, 816, 817, 818, 819, 820, 821, 822, 823, 824, 825, 826, 827, 828, 829, 830, 831, 832, 833, 834, 835, 836, 837, 838, 839, 840, 841, 842, 843, 844, 845, 846, 847, 848, 849, 850, 851, 852, 853, 854, 855, 856, 857, 858, 859, 860, 861, 862, 863, 864, 865, 866, 867, 868, 869, 870, 871, 872, 873, 874, 875, 876, 877, 878, 879, 880, 881, 882, 883, 884, 885, 886, 887, 888, 889, 890, 891, 892, 893, 894, 895, 896, 897, 898, 899, 900, 901, 902, 903, 904, 905, 906, 907, 908, 909, 910, 911, 912, 913, 914, 915, 916, 917, 918, 919, 920, 921, 922, 923, 924, 925, 926, 927, 928, 929, 930, 931, 932, 933, 934, 935, 936, 937, 938, 939, 940, 941, 942, 943, 944, 945, 946, 947, 948, 949, 950, 951, 952, 953, 954, 955, 956, 957, 958, 959, 960, 961, 962, 963, 964, 965, 966, 967, 968, 969, 970, 971, 972, 973, 974, 975, 976, 977, 978, 979, 980, 981, 982, 983, 984, 985, 986, 987, 988, 989, 990, 991, 992, 993, 994, 995, 996, 997, 998, 999, 1000.



Luther J. Heffernan
S-2254
WISCONSIN
LAND SURVEYOR

"ALTA/ACSM LAND TITLE SURVEY OF"

LOT-A CERTIFIED SURVEY NO. 988
SW 1/4 of the NW 1/4
SECTION 27, T35N, R6E,
CITY OF TOMAHAWK,
LINCOLN COUNTY, WISCONSIN

DATE: MAY 16, 2005
REVISIONS:
NO. DATE DESCRIPTION
1 6/27/05 CERTIFICATE NAMES ADDED

ADDRESS: 1513 WEST FOURTH STREET
TOMAHAWK, WISCONSIN 54487
SITE NAME: CARQUEST OF TOMAHAWK
JOB NO: 05-3561 SCALE: 1" = 20' SHEET 1 OF 1

RECEIVED BY LINCOLN COUNTY
SURVEYOR THIS 9TH DAY
OF August 20 05
COUNTY SURVEYOR

BEARINGS ARE REFERENCED
TO THE CERTIFIED SURVEY
MAP OF RECORD.



- LEGEND:**
- 1/2" 6" 12" 18" 24" 30" 36" 42" 48" 54" 60" 66" 72" 78" 84" 90" 96" 102" 108" 114" 120" 126" 132" 138" 144" 150" 156" 162" 168" 174" 180" 186" 192" 198" 204" 210" 216" 222" 228" 234" 240" 246" 252" 258" 264" 270" 276" 282" 288" 294" 300" 306" 312" 318" 324" 330" 336" 342" 348" 354" 360" 366" 372" 378" 384" 390" 396" 402" 408" 414" 420" 426" 432" 438" 444" 450" 456" 462" 468" 474" 480" 486" 492" 498" 504" 510" 516" 522" 528" 534" 540" 546" 552" 558" 564" 570" 576" 582" 588" 594" 600" 606" 612" 618" 624" 630" 636" 642" 648" 654" 660" 666" 672" 678" 684" 690" 696" 702" 708" 714" 720" 726" 732" 738" 744" 750" 756" 762" 768" 774" 780" 786" 792" 798" 804" 810" 816" 822" 828" 834" 840" 846" 852" 858" 864" 870" 876" 882" 888" 894" 900" 906" 912" 918" 924" 930" 936" 942" 948" 954" 960" 966" 972" 978" 984" 990" 996" 1002
 - 1" IRON PIPE FOUND
 - 6" CONCRETE
 - 12" CONC
 - 18" CONC
 - 24" CONC
 - 30" CONC
 - 36" CONC
 - 42" CONC
 - 48" CONC
 - 54" CONC
 - 60" CONC
 - 66" CONC
 - 72" CONC
 - 78" CONC
 - 84" CONC
 - 90" CONC
 - 96" CONC
 - 102" CONC
 - 108" CONC
 - 114" CONC
 - 120" CONC
 - 126" CONC
 - 132" CONC
 - 138" CONC
 - 144" CONC
 - 150" CONC
 - 156" CONC
 - 162" CONC
 - 168" CONC
 - 174" CONC
 - 180" CONC
 - 186" CONC
 - 192" CONC
 - 198" CONC
 - 204" CONC
 - 210" CONC
 - 216" CONC
 - 222" CONC
 - 228" CONC
 - 234" CONC
 - 240" CONC
 - 246" CONC
 - 252" CONC
 - 258" CONC
 - 264" CONC
 - 270" CONC
 - 276" CONC
 - 282" CONC
 - 288" CONC
 - 294" CONC
 - 300" CONC
 - 306" CONC
 - 312" CONC
 - 318" CONC
 - 324" CONC
 - 330" CONC
 - 336" CONC
 - 342" CONC
 - 348" CONC
 - 354" CONC
 - 360" CONC
 - 366" CONC
 - 372" CONC
 - 378" CONC
 - 384" CONC
 - 390" CONC
 - 396" CONC
 - 402" CONC
 - 408" CONC
 - 414" CONC
 - 420" CONC
 - 426" CONC
 - 432" CONC
 - 438" CONC
 - 444" CONC
 - 450" CONC
 - 456" CONC
 - 462" CONC
 - 468" CONC
 - 474" CONC
 - 480" CONC
 - 486" CONC
 - 492" CONC
 - 498" CONC
 - 504" CONC
 - 510" CONC
 - 516" CONC
 - 522" CONC
 - 528" CONC
 - 534" CONC
 - 540" CONC
 - 546" CONC
 - 552" CONC
 - 558" CONC
 - 564" CONC
 - 570" CONC
 - 576" CONC
 - 582" CONC
 - 588" CONC
 - 594" CONC
 - 600" CONC
 - 606" CONC
 - 612" CONC
 - 618" CONC
 - 624" CONC
 - 630" CONC
 - 636" CONC
 - 642" CONC
 - 648" CONC
 - 654" CONC
 - 660" CONC
 - 666" CONC
 - 672" CONC
 - 678" CONC
 - 684" CONC
 - 690" CONC
 - 696" CONC
 - 702" CONC
 - 708" CONC
 - 714" CONC
 - 720" CONC
 - 726" CONC
 - 732" CONC
 - 738" CONC
 - 744" CONC
 - 750" CONC
 - 756" CONC
 - 762" CONC
 - 768" CONC
 - 774" CONC
 - 780" CONC
 - 786" CONC
 - 792" CONC
 - 798" CONC
 - 804" CONC
 - 810" CONC
 - 816" CONC
 - 822" CONC
 - 828" CONC
 - 834" CONC
 - 840" CONC
 - 846" CONC
 - 852" CONC
 - 858" CONC
 - 864" CONC
 - 870" CONC
 - 876" CONC
 - 882" CONC
 - 888" CONC
 - 894" CONC
 - 900" CONC
 - 906" CONC
 - 912" CONC
 - 918" CONC
 - 924" CONC
 - 930" CONC
 - 936" CONC
 - 942" CONC
 - 948" CONC
 - 954" CONC
 - 960" CONC
 - 966" CONC
 - 972" CONC
 - 978" CONC
 - 984" CONC
 - 990" CONC
 - 996" CONC
 - 1002

NOTES:

- ALL BEARINGS AND STREET RIGHT OF WAYS ARE BASED ON RECORDED PLAT.
- SURVEYOR DID NOT VISIT PROPERTY. SURVEY BASED ON RECORDS PROVIDED BY TITLE COMPANY. EASEMENTS AND ENCROACHMENTS IDENTIFIED BY UNITS, ETC., SHOWN ARE AS IDENTIFIED PER INFORMATION PROVIDED BY STEWART TITLE GUARANTY COMPANY.
- THIS SURVEY IS INTENDED TO EXPRESS AN OPINION REGARDING PROFESSIONAL SURVEYING OR TITLE. UNDERSTOOD TO BE AN EXPRESSION OF PROFESSIONAL INFORMATION AND BELIEF.
- THE WORD 'CERTIFIED SURVEYOR' WHICH IS BASED ON HIS BEST KNOWLEDGE, INFORMATION AND BELIEF.
- SURVEY IS CERTIFIED FOR THE USE AS OF THE CURRENT DATE.
- THIS SURVEY AND THAT NO LICENSE HAS BEEN ISSUED OR IMPLIED TO COPY THE SURVEY OR MAKE ANY NECESSARY IN CONNECTION WITH THE ORIGINAL TRANSACTION.

LANDCO, L.P.
11281 Richmond, Bldg. J Suite 105, Houston, Texas 77082
OFFICE (281) 556-1202 FAX (281) 556-1645
www.landco.com