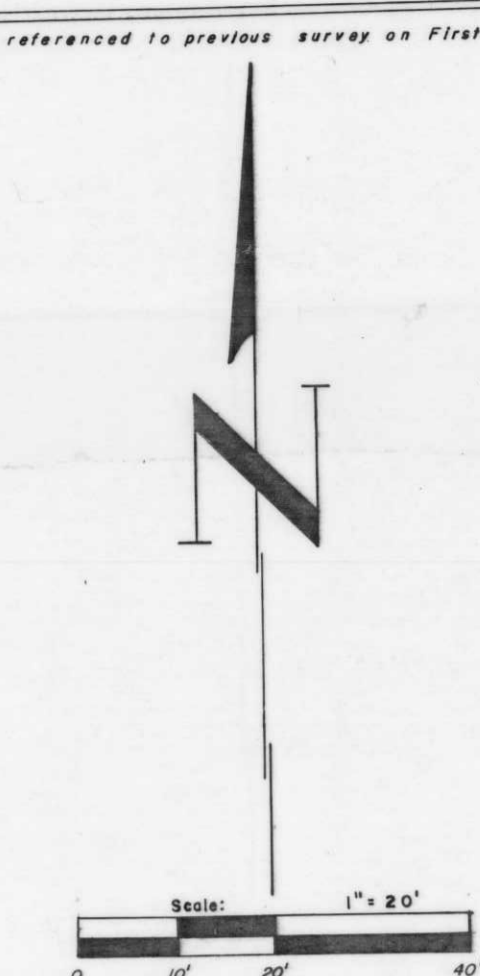


BLOCK I
of the
ORIGINAL PLAT of JENNY
now the
CITY of MERRILL
being part of the
E 1/2 of the SW 1/4
SECTION 12, T31N, R6E
Lincoln County, Wisconsin

Fisher, Immon, Foltz, & Associates, Inc.
Engineers - Surveyors
Merrill, Wisconsin



- LEGEND**
- ⊙ = 1/2" star drill hole, set in concrete sidewalk
 - ⊖ = 3/4" x 30" iron rod, 1.13 pounds per foot, set in place
 - = Property boundary
 - ⊕ = Light pole
 - ⊖ = Catch basin
 - = Curb and gutter
 - ⊕ = Water valve
 - ⊕ = Hydrant
 - ⊕ = Traffic light
 - ⊕ = Sign post
 - ⊕ = Power pole
 - ⊕ = Lawn watering faucet
 - ⊕ = Cleanout
 - ⊕ = Tree
 - ▭ = Existing building
 - ST— = Storm sewer, manhole and direction of flow
 - SA— = Sanitary sewer, manhole and direction of flow
 - W— = Water main and valve - 70 psi pressure
 - G— = Gas main - 2" diameter - 60 psi pressure
 - T— = Buried telephone cable and manhole
- Electric Power available at building**
- Single-phase 120/240, 3-wire
 - Three-phase 120/240, 3-wire
 - Three-phase 208/208, 3-wire (for over 75 kW)
 - 277/480 possible

I, Sheridan D. Schwark, Registered Land Surveyor S-1205, hereby certify that we have surveyed the property shown herein, that this map is an accurate survey of said property to the best of our knowledge and belief, that we have performed this survey by order of the County of Lincoln, Ken O'Donnell, County Clerk, and that we have complied with the applicable requirements of Wisconsin Administrative Code ch. D.S. 1.01.

SHERIDAN D. SCHWARK
S-1205
MERRILL, WIS.
Registered Land Surveyor S-1205
Dated at Merrill, Wisconsin
This 3rd day of January, 1977

L35A