

**GOV'T. LOTS 1 & 2
SECTION 23, T34N, R6E**

Bradley Township
Lincoln County, Wisconsin

Note:
The records of this
survey are on file
with the County
Recorder's Office
and the State
Register of Deeds
Office. This plat
is a true and
correct copy of
the original
survey records.

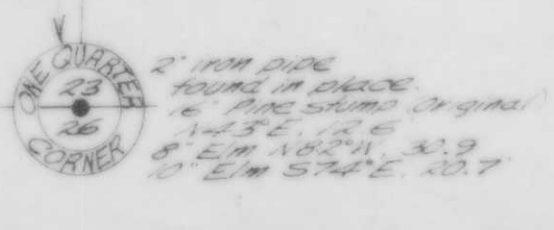
Scale 1" = 100'

April, 1974

Northwoods
Surveyors
Inc.

RECEIVED AT LINCOLN COUNTY
COURTHOUSE THIS 13 DAY
OF June 1975
TAX DESCRIPTION OFFICE

LAB



RECEIVED AT LINCOLN COUNTY
COURTHOUSE THIS 13 DAY
OF June 1975
TAX DESCRIPTION OFFICE