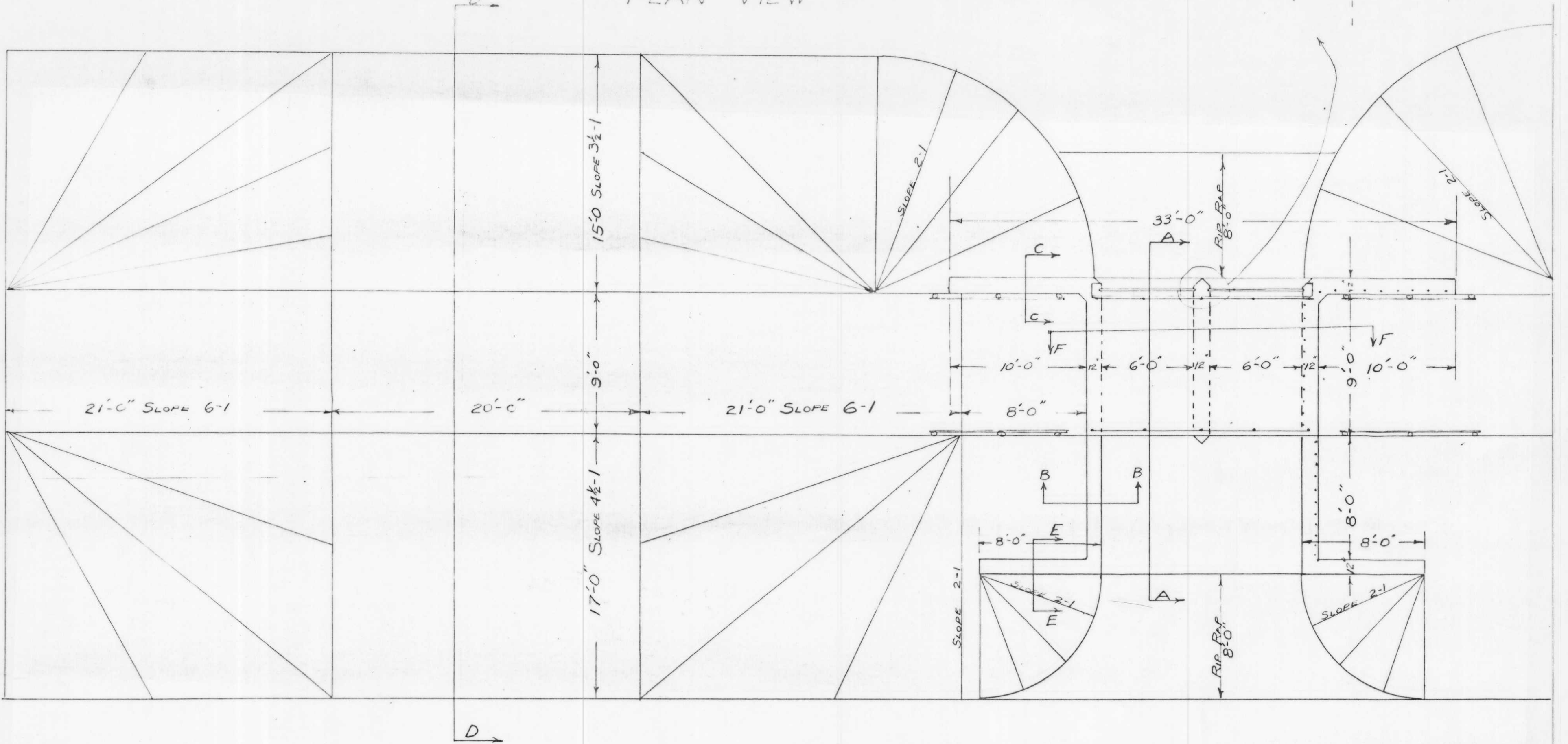
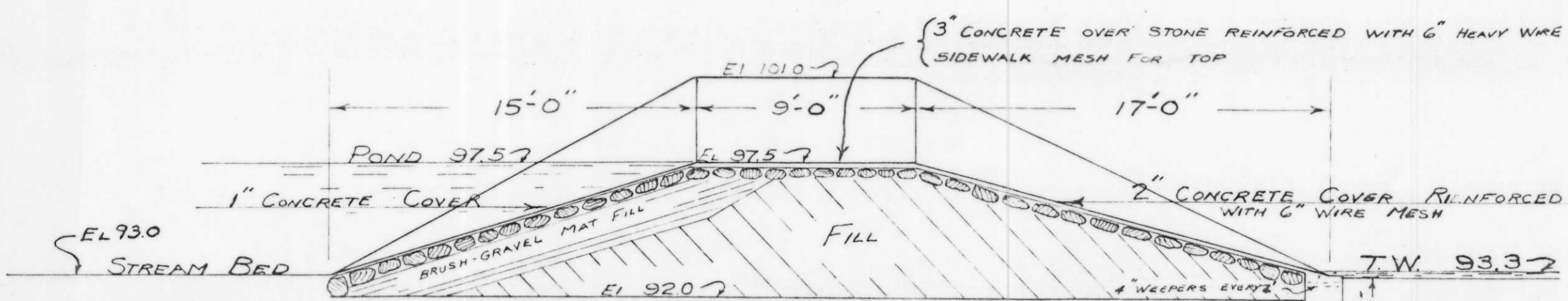
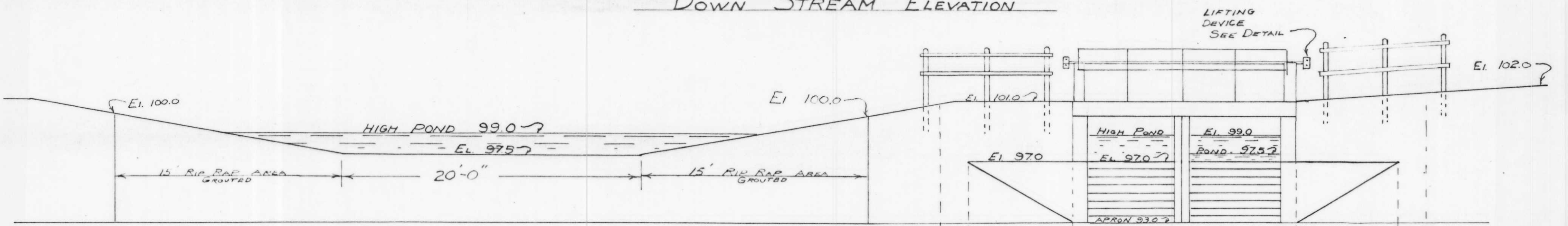


PLAN VIEW



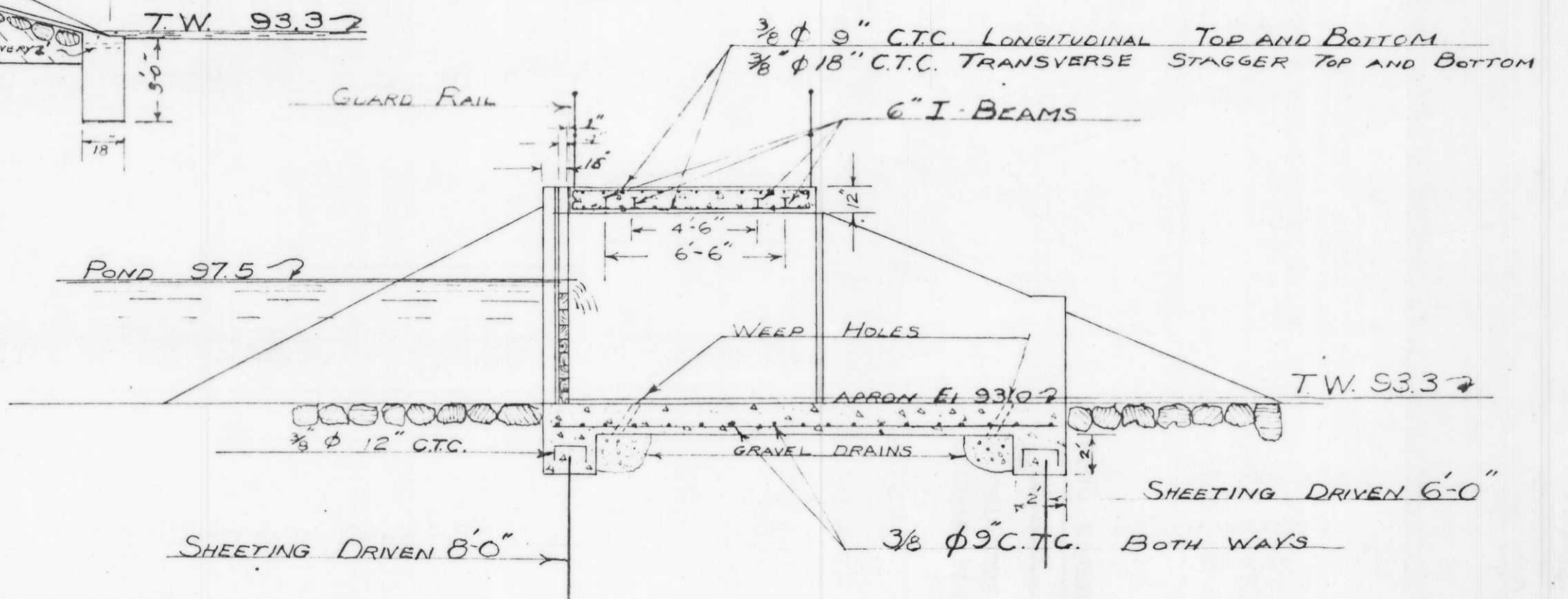
DOWN STREAM ELEVATION



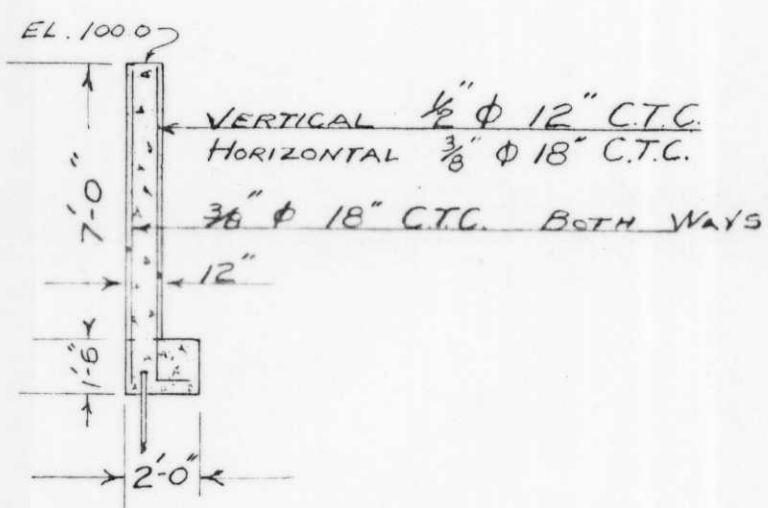
ALL RIP RAP PLACED 2" APART BRUSH IN GROUT THUS

SECTION D-D

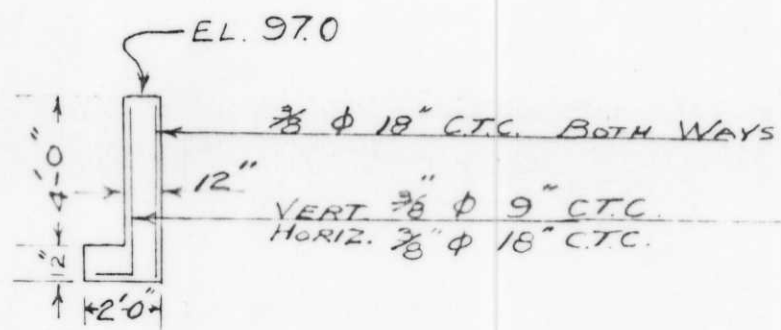
SECTION 20' LONG ONE SECTION 40' LONG AT OLD BYPASS



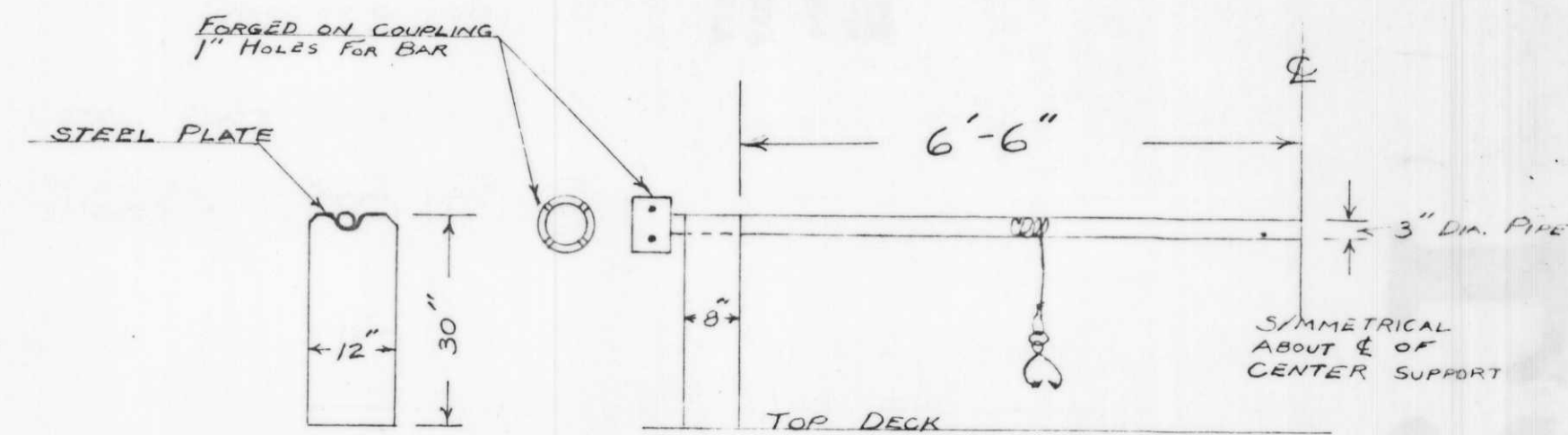
SECTION A-A



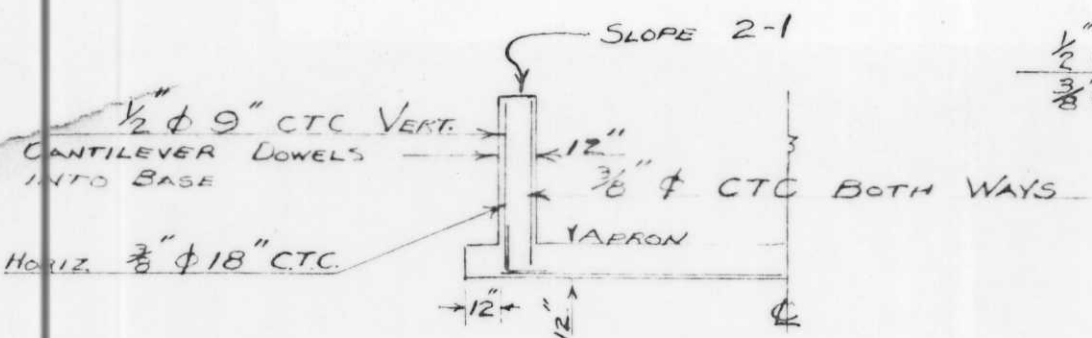
SECTION C-C



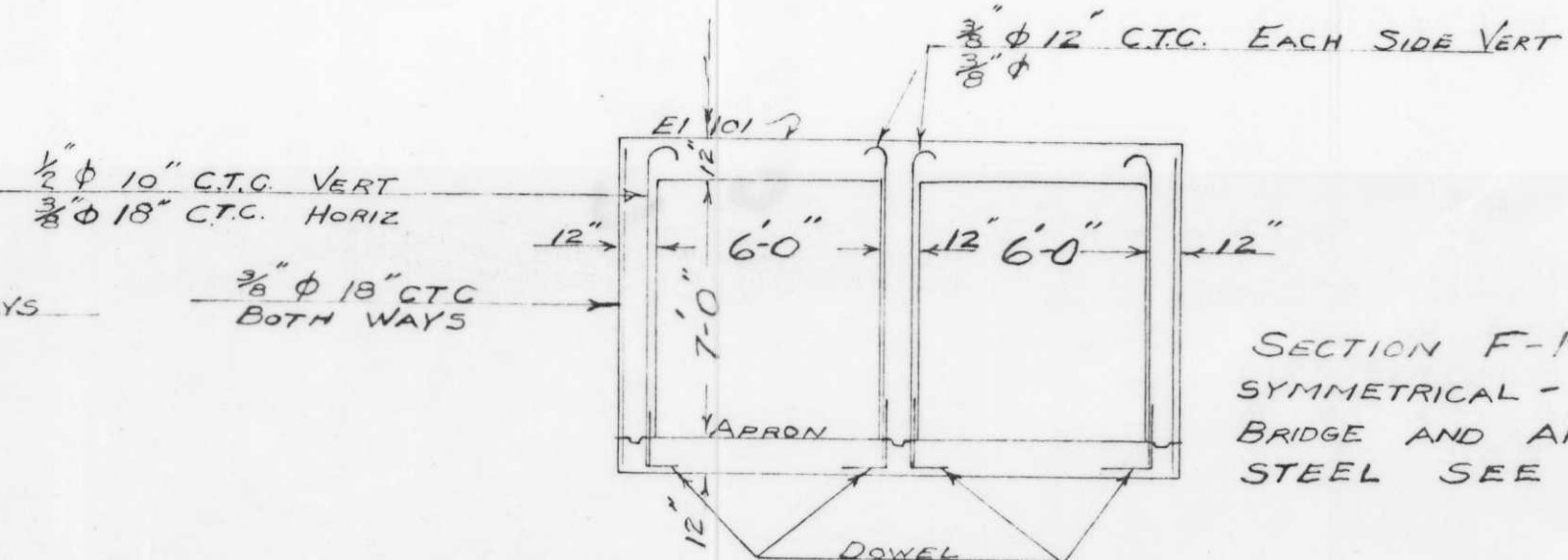
SECTION E-E



LOG LIFTING DEVICE SCALE 1"=12"



SECTION B-B



SECTION F-F

SECTION F-F SYMMETRICAL - FOR BRIDGE AND APRON STEEL SEE A-A

RECEIVED AT LINCOLN COUNTY COURTHOUSE THIS 3rd DAY OF Feb 1940 Pat Phibbs LAND INFORMATION OFFICE

L285B

NE NW Sec 4.35-4

DESIGN OF STOLLE DAM TRIPOLI, WI BY FRANCIS X. FUCHS MERRILL, WI DATE: SEPT. 3, 1940 SCALE 1"=5' REVISED SEPT 19, 1940