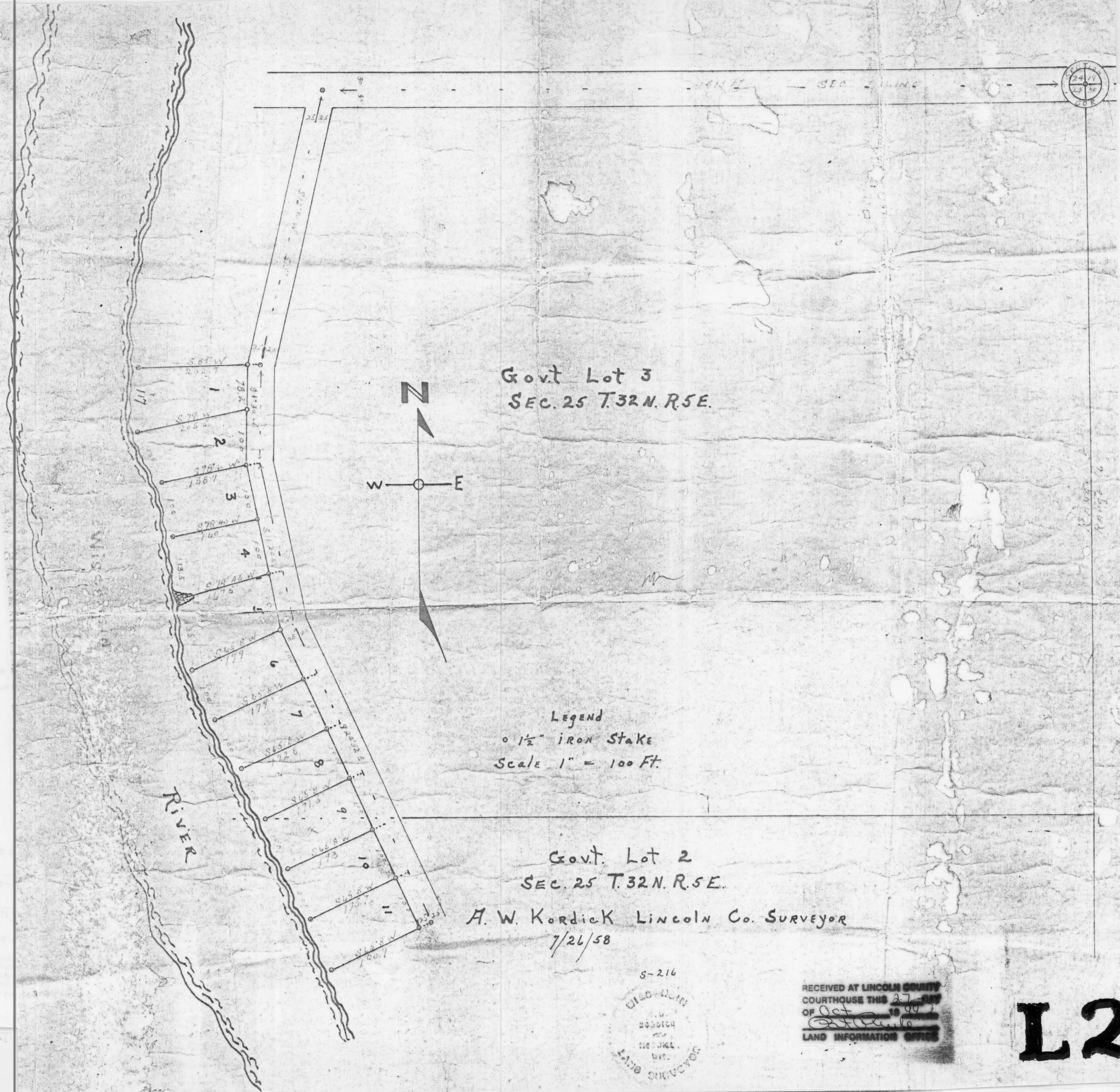
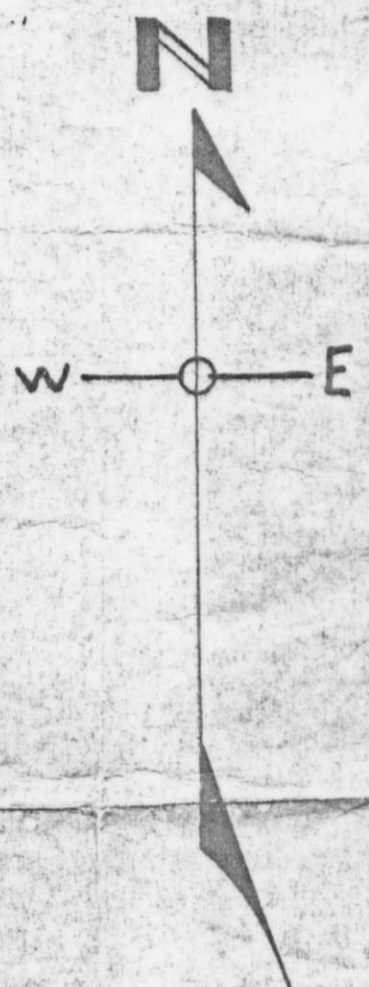


1981B

LAND INFORMATION OFFICE  
RECEIVED AT LINCOLN COUNTY  
COURTHOUSE THIS 27th DAY  
OF Oct 19 58



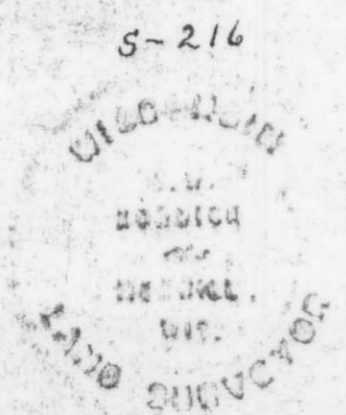
Govt Lot 3  
SEC. 25 T.32N. R.5E.



Legend  
o 1/2" iron Stake  
Scale 1" = 100 Ft.

Govt. Lot 2  
SEC. 25 T.32N. R.5E.

A. W. Kordick Lincoln Co. Surveyor  
7/26/58



RECEIVED AT LINCOLN COUNTY  
COURTHOUSE THIS 27th DAY  
OF Oct 19 58  
LAND INFORMATION OFFICE

L284A