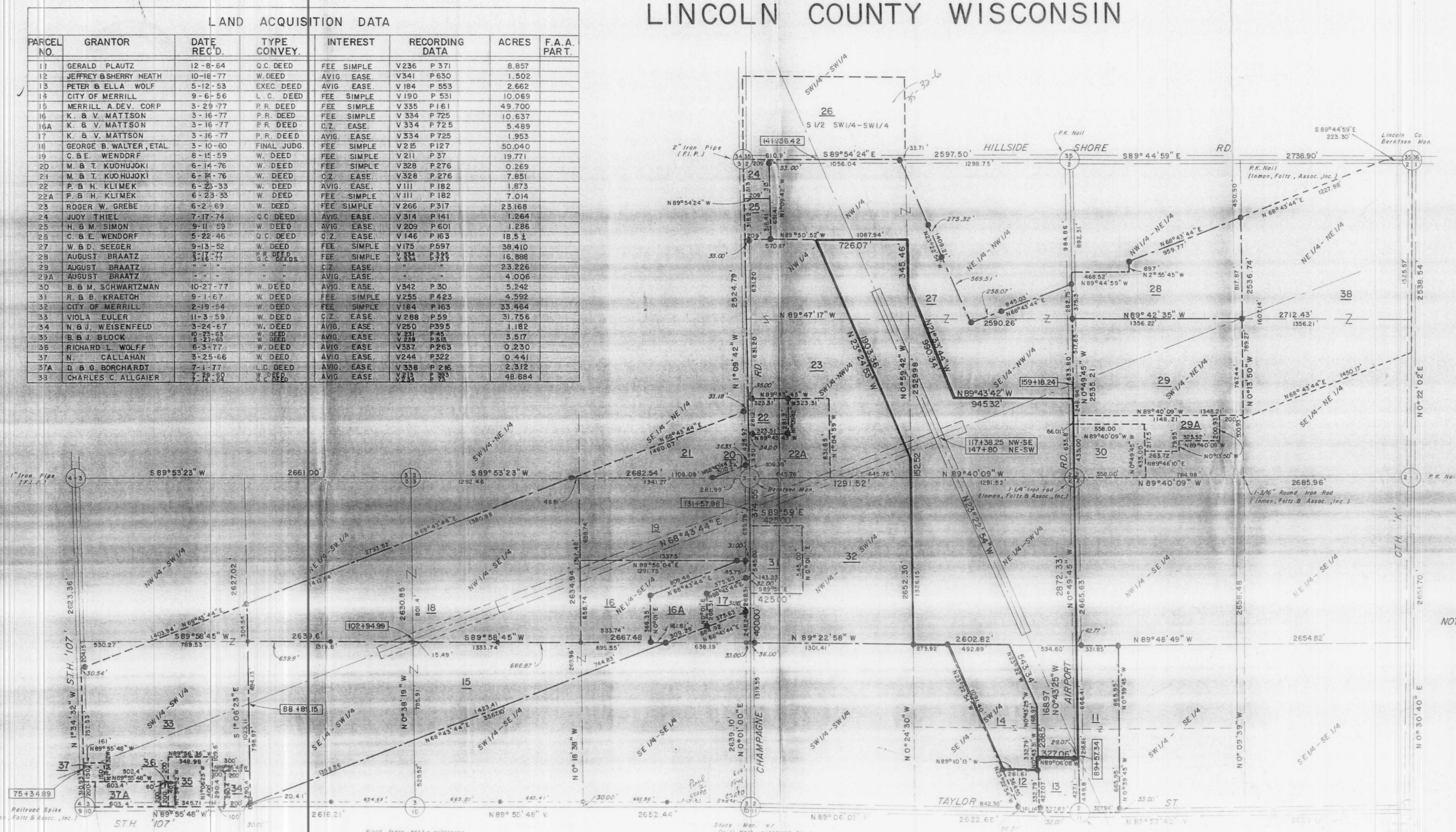


# T31N - R6E LINCOLN COUNTY WISCONSIN

## LAND ACQUISITION DATA

PARCEL NO.	GRANTOR	DATE REC'D.	TYPE CONVEY.	INTEREST	RECORDING DATA	ACRES	F.A.A. PART.
11	GERALD PLAUTZ	12-8-64	Q.C. DEED	FEE SIMPLE	V236 P 371	8.857	
12	JEFFREY & SHERRY HEATH	10-18-77	W. DEED	AVIG. EASE	V341 P 630	1.502	
13	PETER & ELLA WOLF	5-12-53	EXEC. DEED	AVIG. EASE	V 184 P 553	2.662	
14	CITY OF MERRILL	9-6-56	L.C. DEED	FEE SIMPLE	V 190 P 531	10.069	
15	MERRILL A. DEV. CORP.	3-29-77	P.R. DEED	FEE SIMPLE	V 335 P 161	49.700	
16	K. & V. MATTSON	3-16-77	P.R. DEED	FEE SIMPLE	V 334 P 725	10.637	
16A	K. & V. MATTSON	3-16-77	P.R. DEED	C.Z. EASE	V 334 P 725	5.489	
17	K. & V. MATTSON	3-16-77	P.R. DEED	AVIG. EASE	V 334 P 725	1.953	
18	GEORGE B. WALTER, ETAL.	3-10-60	FINAL JUDG.	FEE SIMPLE	V 215 P 127	50.040	
19	C. & E. WENDORF	8-15-59	W. DEED	FEE SIMPLE	V 211 P 37	19.771	
20	M. & T. KUOHUJOKI	6-14-76	W. DEED	FEE SIMPLE	V 328 P 276	0.269	
21	M. & T. KUOHUJOKI	6-14-76	W. DEED	C.Z. EASE	V 328 P 276	7.851	
22	P. & H. KLIMEK	6-23-33	W. DEED	AVIG. EASE	V III P 182	1.873	
22A	P. & H. KLIMEK	6-23-33	W. DEED	FEE SIMPLE	V III P 182	7.014	
23	ROGER W. GREBE	6-2-69	W. DEED	FEE SIMPLE	V 266 P 317	23.168	
24	JUDY THIEL	7-17-74	Q.C. DEED	AVIG. EASE	V 314 P 141	1.264	
25	H. & M. SIMON	9-11-59	W. DEED	AVIG. EASE	V 209 P 601	1.286	
26	C. & E. WENDORF	5-22-46	Q.C. DEED	C.Z. EASE	V 146 P 163	18.51	
27	W. & D. SEEGER	9-13-52	W. DEED	FEE SIMPLE	V 175 P 697	38.410	
28	AUGUST BRAATZ	8-17-77	P.R. DEED	FEE SIMPLE	V 334 P 395	16.888	
28	AUGUST BRAATZ	8-16-77	Q.C. DEEDS	FEE SIMPLE	V 334 P 395	16.888	
29	AUGUST BRAATZ	"	"	C.Z. EASE	"	23.226	
29A	AUGUST BRAATZ	"	"	AVIG. EASE	"	4.006	
30	B. & M. SCHWARTZMAN	10-27-77	W. DEED	AVIG. EASE	V 342 P 30	5.242	
31	R. & B. KRAETCH	9-1-67	W. DEED	FEE SIMPLE	V 255 P 423	4.592	
32	CITY OF MERRILL	2-19-54	W. DEED	FEE SIMPLE	V 184 P 163	33.464	
33	VIOLA EULER	11-3-59	W. DEED	C.Z. EASE	V 288 P 59	31.756	
34	N. & J. WEISENFELD	3-24-67	W. DEED	AVIG. EASE	V 250 P 395	1.182	
35	B. & J. BLOCK	10-23-63	W. DEED	AVIG. EASE	V 231 P 45	3.517	
35	B. & J. BLOCK	5-27-63	W. DEED	AVIG. EASE	V 239 P 518	1.818	
36	RICHARD L. WOLFF	6-3-77	W. DEED	AVIG. EASE	V 357 P 265	0.230	
37	N. CALLAHAN	3-25-66	W. DEED	AVIG. EASE	V 244 P 322	0.441	
37A	D. & G. BORCHARDT	7-1-77	L.C. DEED	AVIG. EASE	V 338 P 216	2.312	
38	CHARLES C. ALLGAIER	7-14-54	W. DEED	AVIG. EASE	V 233 P 383	48.684	




NOTE - ALL BEARINGS ARE TRUE

### LEGEND

- 1-1/4" Solid, Round, Iron Rod (Inman, Foltz & Assoc., Inc.)
- 3/4" Solid, Round, Iron Rod (Inman, Foltz & Assoc., Inc.)
- ⊙ 1" Iron Pipe (Becher-Hoppe Engrs., Inc. - April, 1978)

PROPERTY MAP  
MERRILL MUNICIPAL AIRPORT  
MERRILL WISCONSIN



**BECHER-HOPPE ENGINEERS, INC.**  
SCHOFIELD, WISCONSIN

DRAWN BY GLM  
APPROVED BY AGF  
REVISIONS MAY 3, 78 GLM  
DATE 4-7-78  
SCALE 1" = 400'  
FILE NUMBER 5927 SHEET NUMBER OF

L273B