

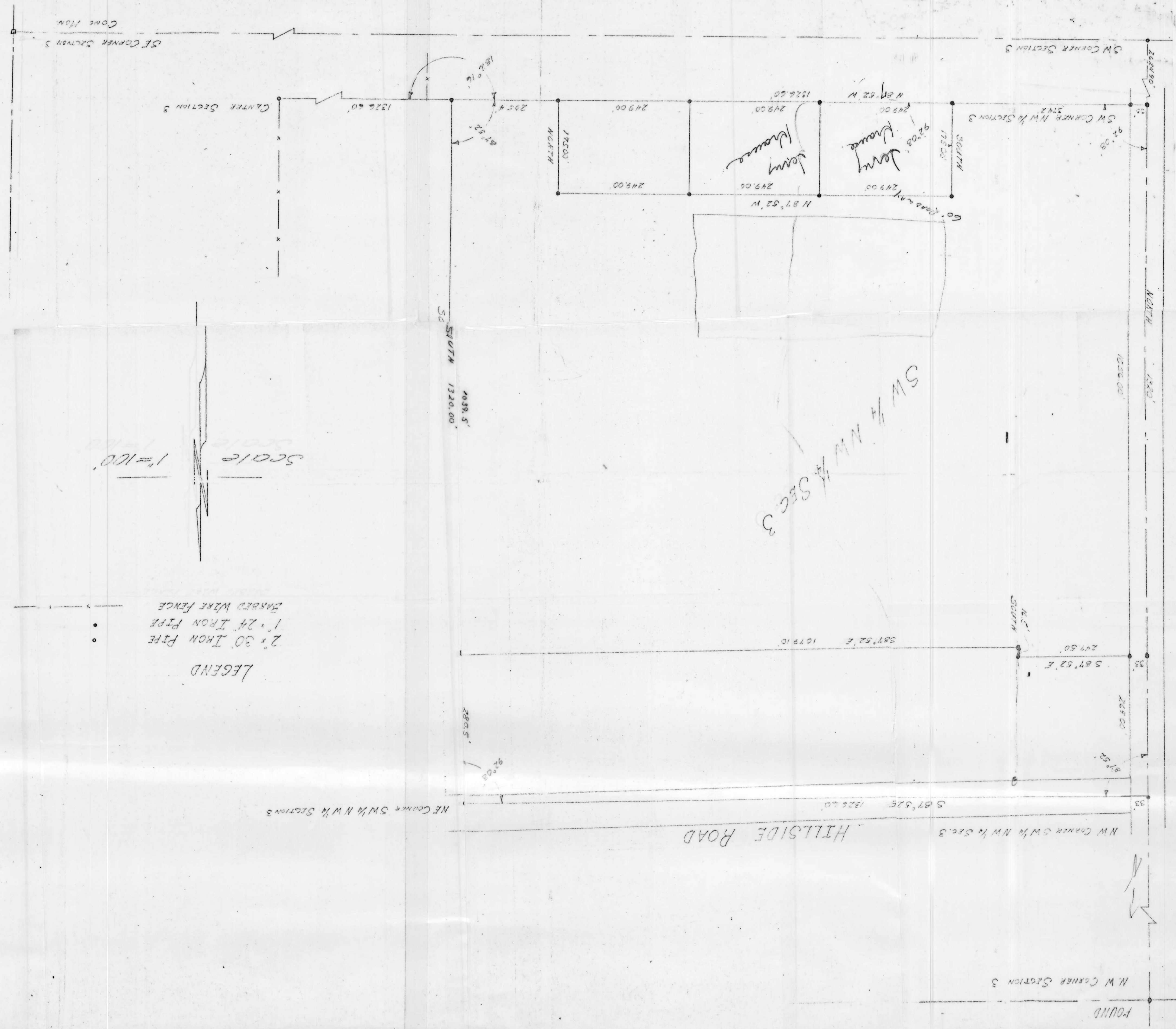
REVISIONS
 DRAWING: W.R. DATE: 5-17-29
 CHECKED: R.R. DATE: 5-17-29
 SHEET 1
 SURVEY - GAY OBERG PROPERTY
 PART OF THE SW 1/4 OF THE NW 1/4
 SEC 3, T31N, R6E
 1325 ELLIS ST. STEVENS JOINT WIS
STONE & ROBINSON ASSOC. INC.
 CONSULTING ENGINEERS - PLANNERS

8

Received Plans
 City Engineer's Office
 62-76

26

William R. Olt
 5/17/29



T H #107

FOUND