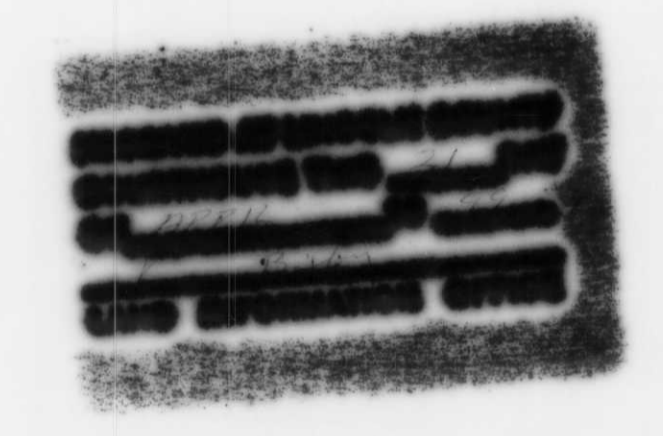
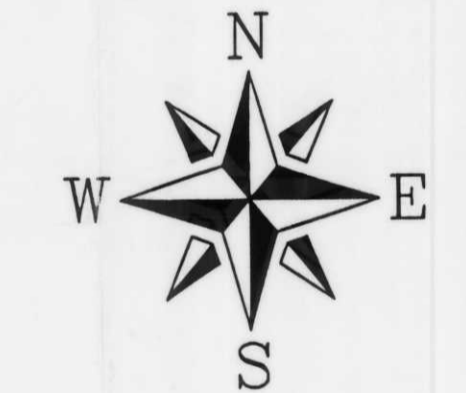
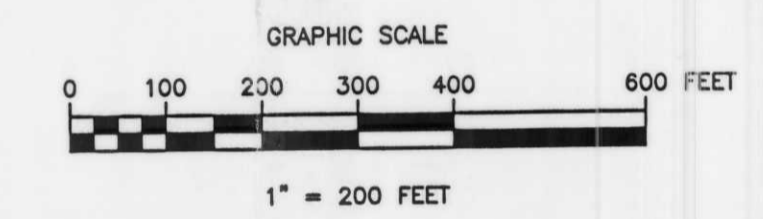
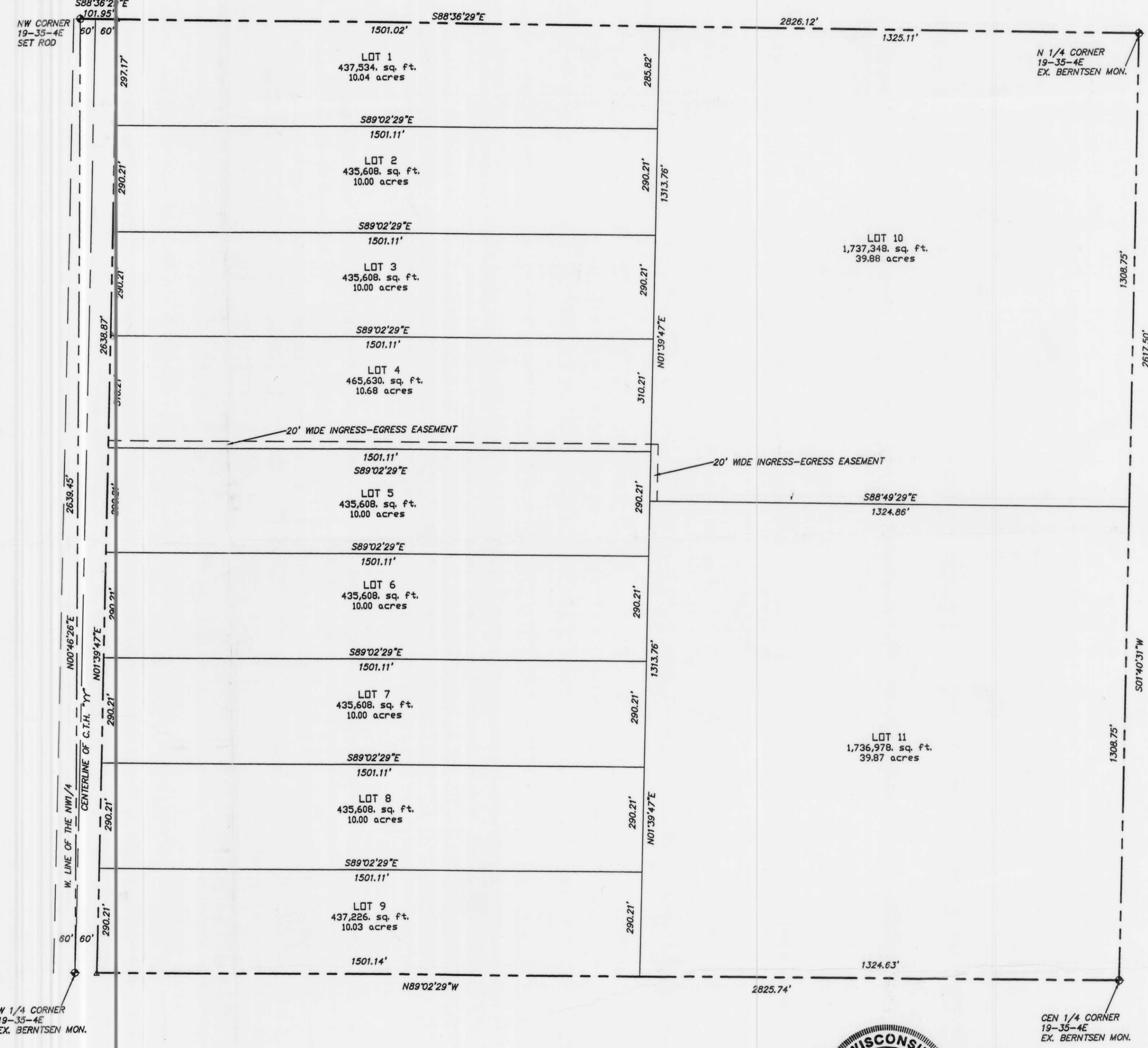


A SURVEY OF
THE
NW 1/4, SECTION 19, T.35N., R.4E.,
TOWN OF SOMO
LINCOLN COUNTY, WISCONSIN

EX. BERTSEN
MONUMENT, 7.92'
N. OF ACTUAL
CORNER LOCATION



I, DEVON WANDEN HEUVEL, REGISTERED LAND SURVEYOR, HEREBY CERTIFY TO MY CLIENT(S) THAT I HAVE SURVEYED AND MAPPED THE PROPERTY SHOWN UPON THIS PLAT AND THAT THE WITHIN PLAT IS A TRUE AND CORRECT REPRESENTATION OF THE BOUNDARIES OF THE LAND SURVEYED, TO THE BEST OF MY KNOWLEDGE AND BELIEF.

L 266 B

NO.	DATE	REVISION	BY

A SURVEY OF
THE
NW 1/4, SECTION 19, T.35N.,
TOWN OF SOMO
LINCOLN COUNTY, WISCONSIN

© 1999 MSA PROFESSIONAL SERVICES

MSA PROFESSIONAL SERVICES
TRANSPORTATION • MUNICIPAL • REMEDIATION
DEVELOPMENT • ENVIRONMENTAL
1835 N. STEVENS ST. RHWLANDER, WI 54501
715-362-3244 1-800-844-7854 Fax: 715-362-3244

F.B. PROJ # 980146
DRAWN BY DVH DATE 3-29-99 SHEET 1
CHECKED BY SCALE 1" = 200' FILE NO. 9