

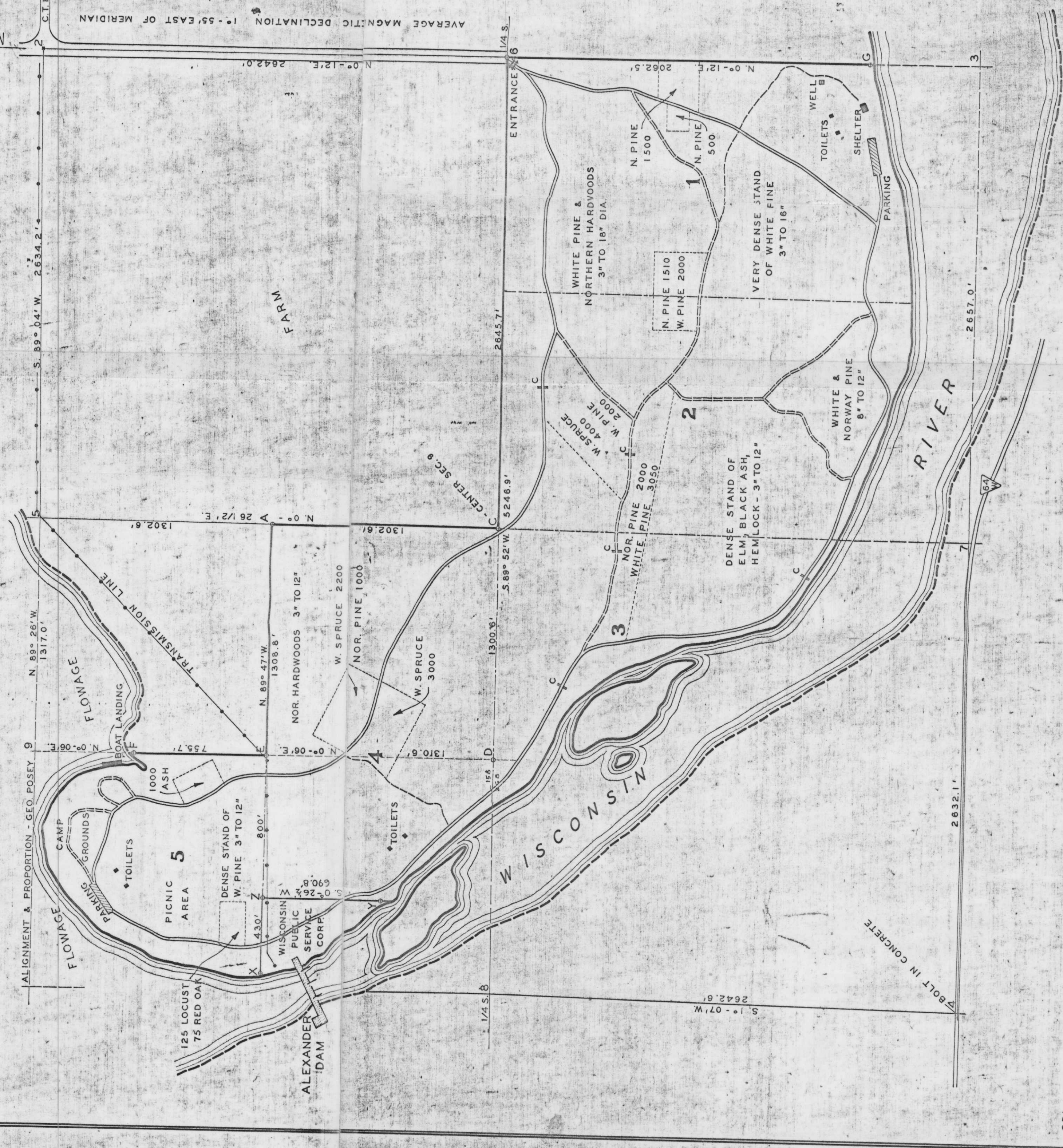
1952

COUNCIL GROUNDS STATE FOREST

SEC. 9 T. 31 N. - R. 6 E. NEAR MERRILL WIS.

ACREAGE - 263

SCALE - 1" = 400'



REFERENCES TO CORNERS -

- 2- STONE IN E HIGHWAYS - W. END CULVERT ABUTMENT SE. 23.8', FENCE CORNER POST S.W. 42.3'
- 5- STONE { N.E. PEAK OF BOULDER S. 19° E. 25.1'
SPIKE IN S. FACE POLE N. 55° E. 21.8'
" " " W. " " MAPLE N. 28° W. 40.25'
- 6- W.C.D. MONUMENT { N. COR. BASE E. GATE POST S. 48° W. 28.95'
E. COR. " " " S. 78° W. 35.0'
- 7- POINT IN LINE OF FENCE SOUTH
- 8- POINT 1.3' S. OF GRANITE MONUMENT FOUND LEANING (NO BEARINGS NEAR)
- C- VAR 2*15'E { SUGAR MAPLE 8" N. 84° 40'E. 21.5'
HEMLOCK 10" N. 15° 25'E. 23.8'
W.C.D. MON. MAPLE 2" N. 78° 30'E. 7.8'
" " " N. 48° 50'W. 7.9'
- A- W.C.D. MON. { ELM 6" S. 44° 30'W. 117.3'
ELM 5" S. 83° 24'W. 76.8'
- D- W.C.D. MON. { WHITE PINE 22" S. 14° 55'E. 63.3'
VAR. 2' 28"E. S. 56° 37' W. 33.1'
- E- W.C.D. MON. { ON N. FACE HI-LINE POLE S. 89° 54'W. 20.5'
SUGAR MAPLE 8" S. 30° E. 18.55'
- F- W.C.D. MON. { WHITE PINE STUMP 30" S. 38° E. 4.7'
" BIRCH 6" N. 30° W. 1.65'
- G- W.C.D. MON. { Y. PINE 7" N. 53° 18'W. 101.55'
" 7" N. 9° 03'W. 75.77'
W. PINE 12" N. 18° 21'E. 13.8'
- X- ANCHORED { W. PINE 3" N. 6° W. 17.77'
1 1/2" IRON PIPE
- Y- ANCHORED { W. PINE 15" N. 0° 26'E. 144.77'
1 1/2" IRON PIPE W. PINE STUMP 18" S. 53° E. 63.2'
- Z- ANCHORED { W. PINE 6" S. 0° 35'E. 39.67'
1 1/2" IRON PIPE

- SURVEYORS CERTIFICATE -

I, RAY H. HALL, DO HEREBY CERTIFY THAT IN JANUARY AND FEBRUARY 1939, I SURVEYED THE LAND BOUNDARY OF COUNCIL GROUNDS STATE FOREST, COMPRISING GOVT. LOTS ONE (1), TWO (2), THREE (3), FOUR (4) AND FIVE (5) OF SEC. 9 T. 31 N. - R. 6 E. OF 4 TH. PRINCIPAL MERIDIAN, IN LINCOLN COUNTY, WISCONSIN, (SOMETIMES CALLED ALEXANDER PARK, MERRILL) AND THAT THE MAP SCALED HEREON CORRECTLY REPRESENTS THE WORK THEN PERFORMED; THAT I DETERMINED THE TRUE AZIMUTH OF THE LINES BY POLARIS OBSERVATION ON THE EAST LINE; THAT IN LOCATING THE LINES I WAS GOVERNED, IN PART, BY THE WIS. PUBLIC SERVICE SURVEY OF 1923 AND BY H.R. GEO. POSEY'S SURVEY OF 1934; THAT I ACCEPTED THE OLD FENCE AS THE EAST LINE OF LOT 1; THAT THE LABOR WAS FURNISHED BY THE W.P.A. ON AN ALTERNATING BASIS; THAT CONDITIONS OF WIND AND LOW TEMPERATURE WERE NOT CONDUCTIVE TO THE MOST ACCURATE WORK; THAT IN OCTOBER, 1939 I SET SEVEN (7) CONSERVATION DEPARTMENT MONUMENTS (5" x 3 1/2" CONCRETE, WITH BRONZE CAP) AT THE CORNERS AS SHOWN AND LOCATED BY WINGS AND DRIVEWAYS BY PAVED TRAVERSES, Lying IN THE SHORE LINE AT INTERVALS.

R. H. Hall
SURVEYOR FOR
C.C.C. CAMP 75-5
MINOCQUA WIS.

OCTOBER 31, 1939

C.D.L. - 1939

FM3-1

RECEIVED AT LINCOLN COUNTY
COURTHOUSE THIS 16 DAY
OF 1939
TAX DESCRIPTION OFFICE