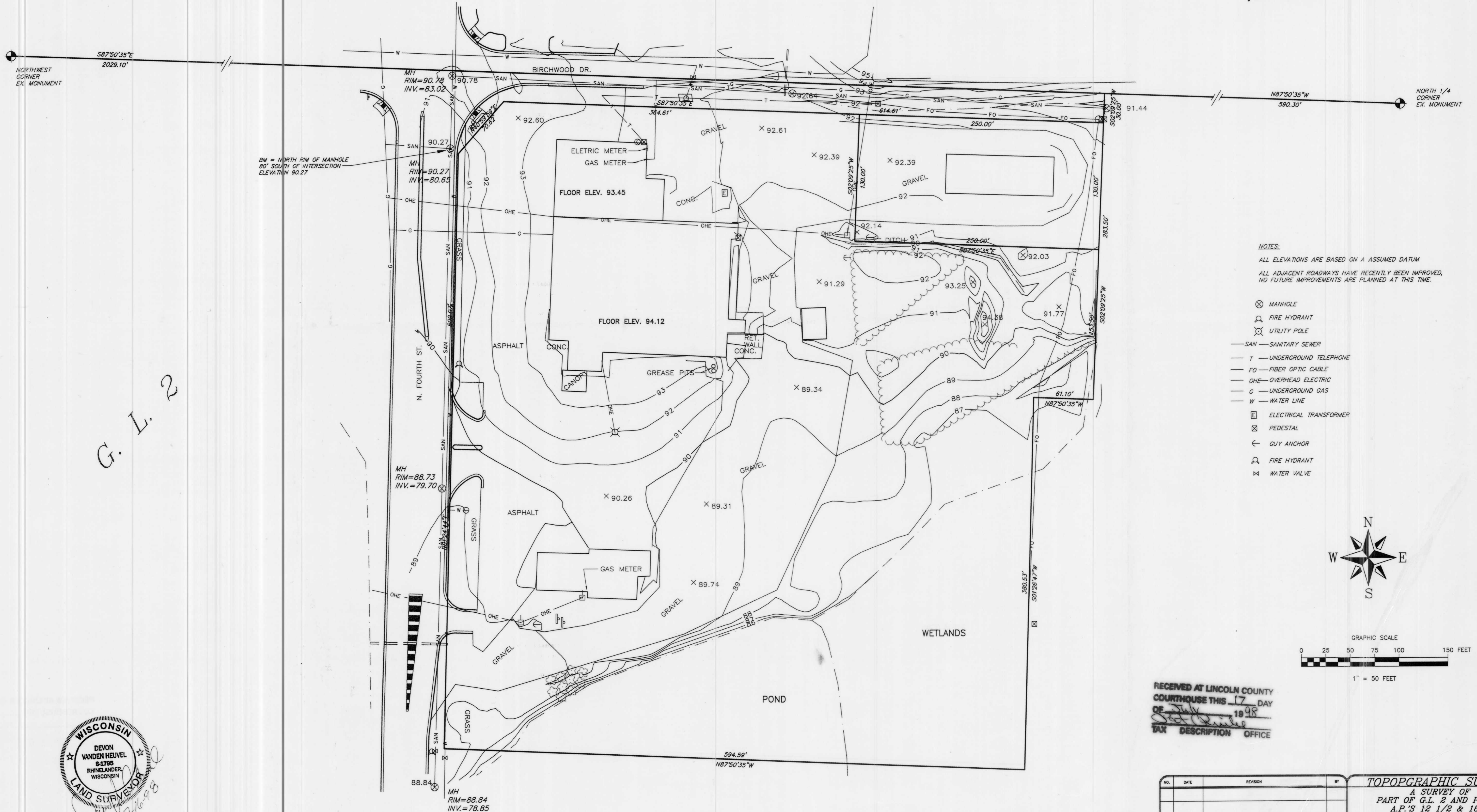


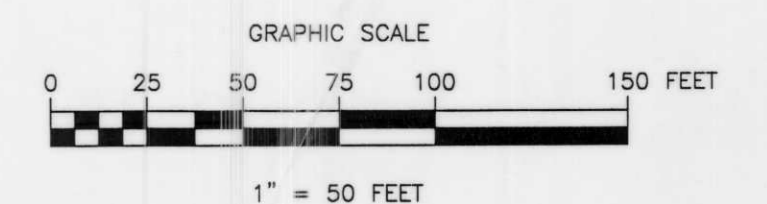
A SURVEY OF
 PART OF G.L. 2 AND PART OF
 A.P.'S 12 1/2 & 187
 OF SECTION 34, T.35N., R.6E.
 CITY OF TOMAHAWK,
 LINCOLN COUNTY, WISCONSIN

NE NW



NOTES:
 ALL ELEVATIONS ARE BASED ON A ASSUMED DATUM
 ALL ADJACENT ROADWAYS HAVE RECENTLY BEEN IMPROVED,
 NO FUTURE IMPROVEMENTS ARE PLANNED AT THIS TIME.

- ⊗ MANHOLE
- ⊕ FIRE HYDRANT
- ⊙ UTILITY POLE
- SAN — SANITARY SEWER
- T — UNDERGROUND TELEPHONE
- FO — FIBER OPTIC CABLE
- OHE — OVERHEAD ELECTRIC
- G — UNDERGROUND GAS
- W — WATER LINE
- ⊠ ELECTRICAL TRANSFORMER
- ⊞ PEDESTAL
- ⊙ GUY ANCHOR
- ⊕ FIRE HYDRANT
- ⊞ WATER VALVE



RECEIVED AT LINCOLN COUNTY
 COURTHOUSE THIS 17 DAY
 OF July 1998
 TAX DESCRIPTION OFFICE

NO.	DATE	REVISION	BY

TOPOGRAPHIC SURVEY A SURVEY OF PART OF G.L. 2 AND PART OF A.P.'S 12 1/2 & 187 OF SECTION 34, T.35N., R.6E. CITY OF TOMAHAWK, LINCOLN COUNTY, WISCONSIN	
© 1998 MSA PROFESSIONAL SERVICES, INC.	MSA PROFESSIONAL SERVICES, INC. 510 WEST 10TH & STONEY ST. WISCONSIN, WI 53080 414-251-2511 FAX 414-251-7661
DRAWN BY DVH CHECKED BY	DATE 7/13/98 SCALE 1" = 50' SHEET 1 of 1 FILE NO. 980103

G. L. 2



I, DEVON VANDEN HEUVEL, REGISTERED LAND SURVEYOR, HEREBY CERTIFY TO MY CLIENT(S) THAT I HAVE SURVEYED AND MAPPED THE PROPERTY SHOWN UPON THIS PLAT AND THAT THE WITHIN PLAT IS A TRUE AND CORRECT REPRESENTATION OF THE BOUNDARIES OF THE LAND SURVEYED, TO THE BEST OF MY KNOWLEDGE AND BELIEF.

L253A