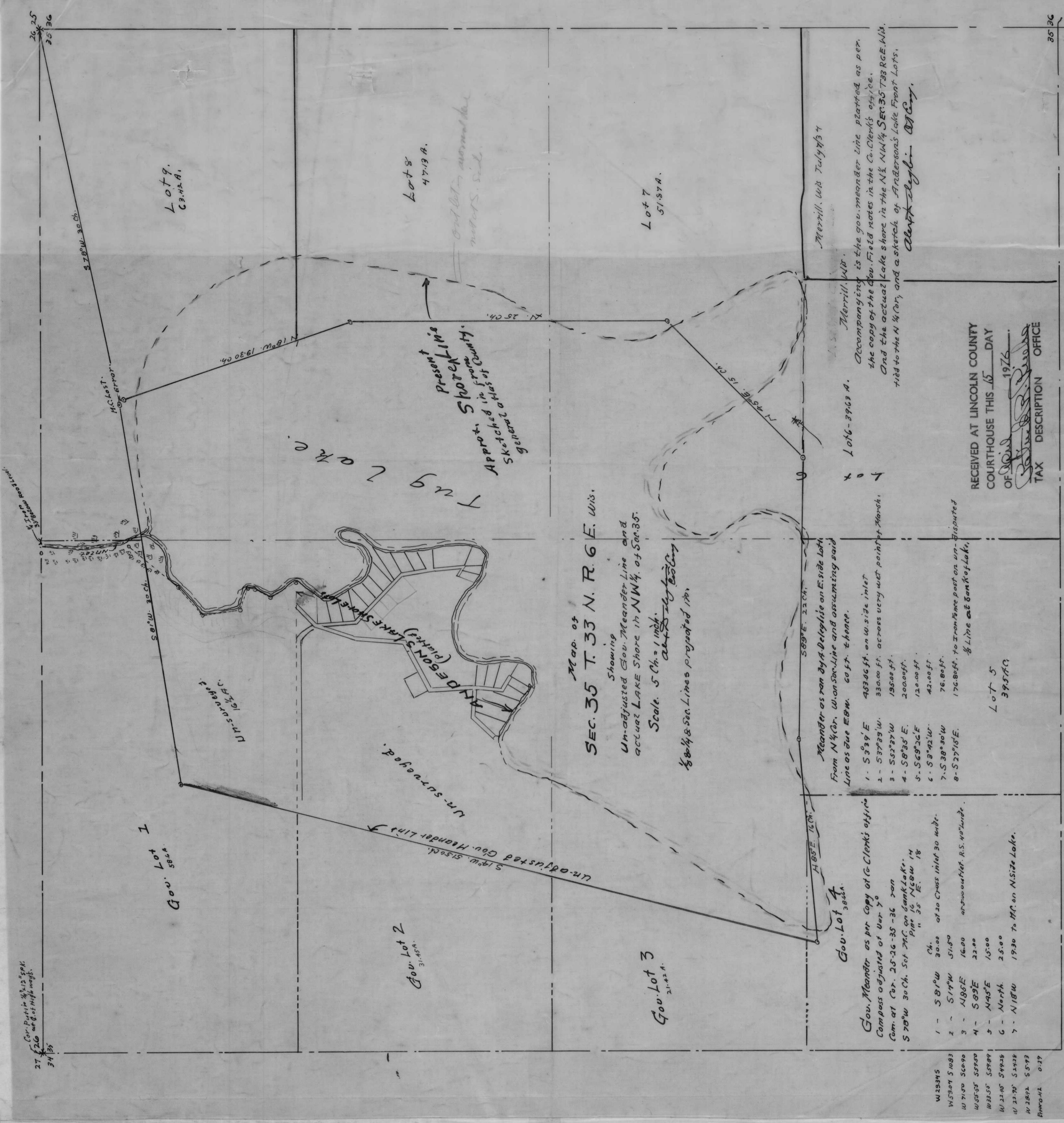
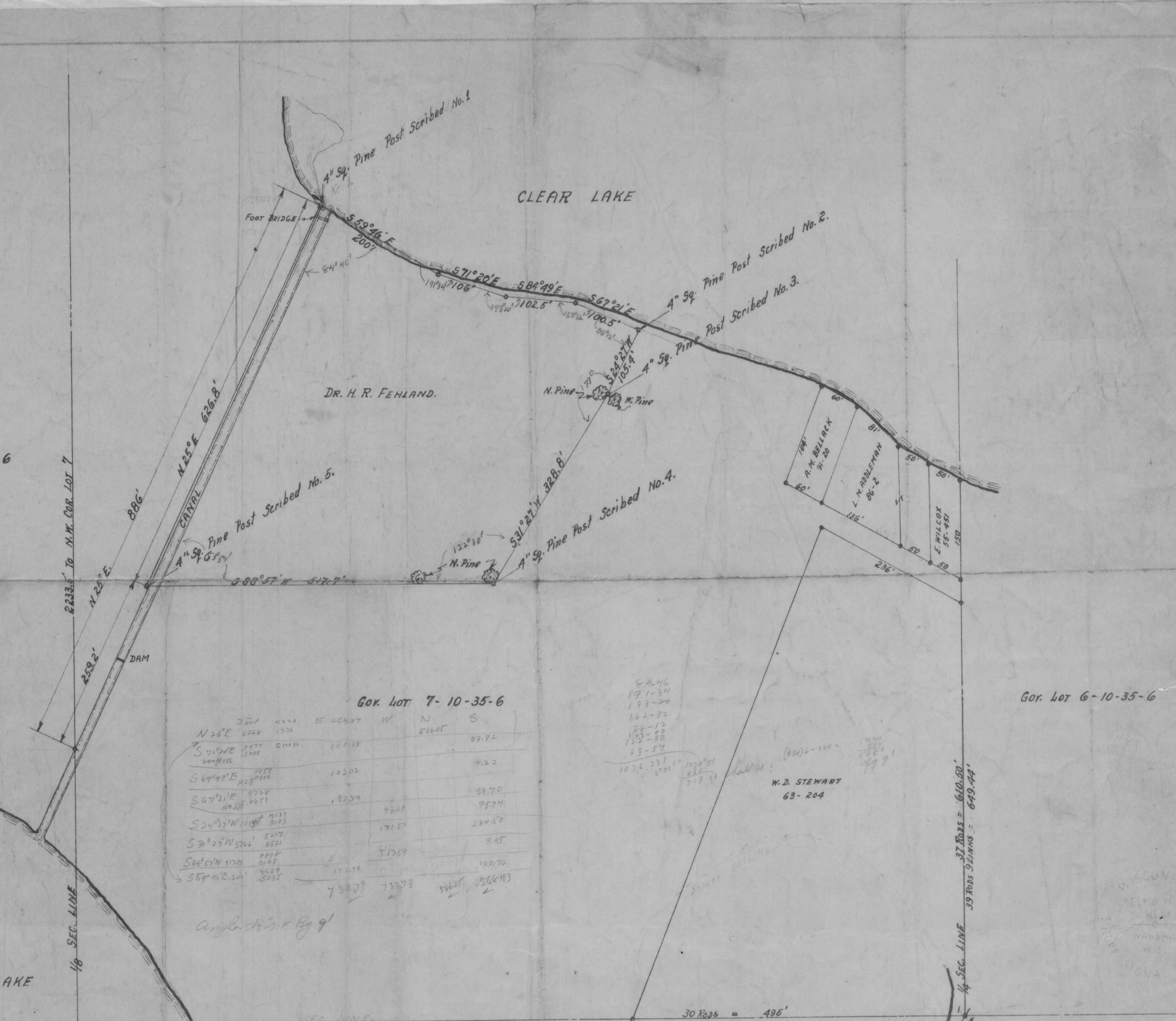


A 124



RECEIVED AT LINCOLN COUNTY  
COURTHOUSE THIS 15 DAY  
OF 1926  
TAX DESCRIPTION OFFICE



Gov. Lot 7-10-35-6

N	S	E	W	N	S
221	422	2000	1000	89.7	
224	122				
210	500	1000		9.2	
200	100			30.70	
200	100			25.74	
200	100			20.40	
200	100			9.45	
200	100			100.70	
200	100			56.43	
733.77	733.77				

RECEIVED AT LINCOLN COUNTY  
COURTHOUSE THIS 15 DAY  
OF 1926  
TAX DESCRIPTION OFFICE

L 24 B

RECEIVED AT LINCOLN COUNTY  
COURTHOUSE THIS 15 DAY  
OF 1926  
TAX DESCRIPTION OFFICE