

Sec 15-34-8  
GL2+8

SURVEYORS NOTES:

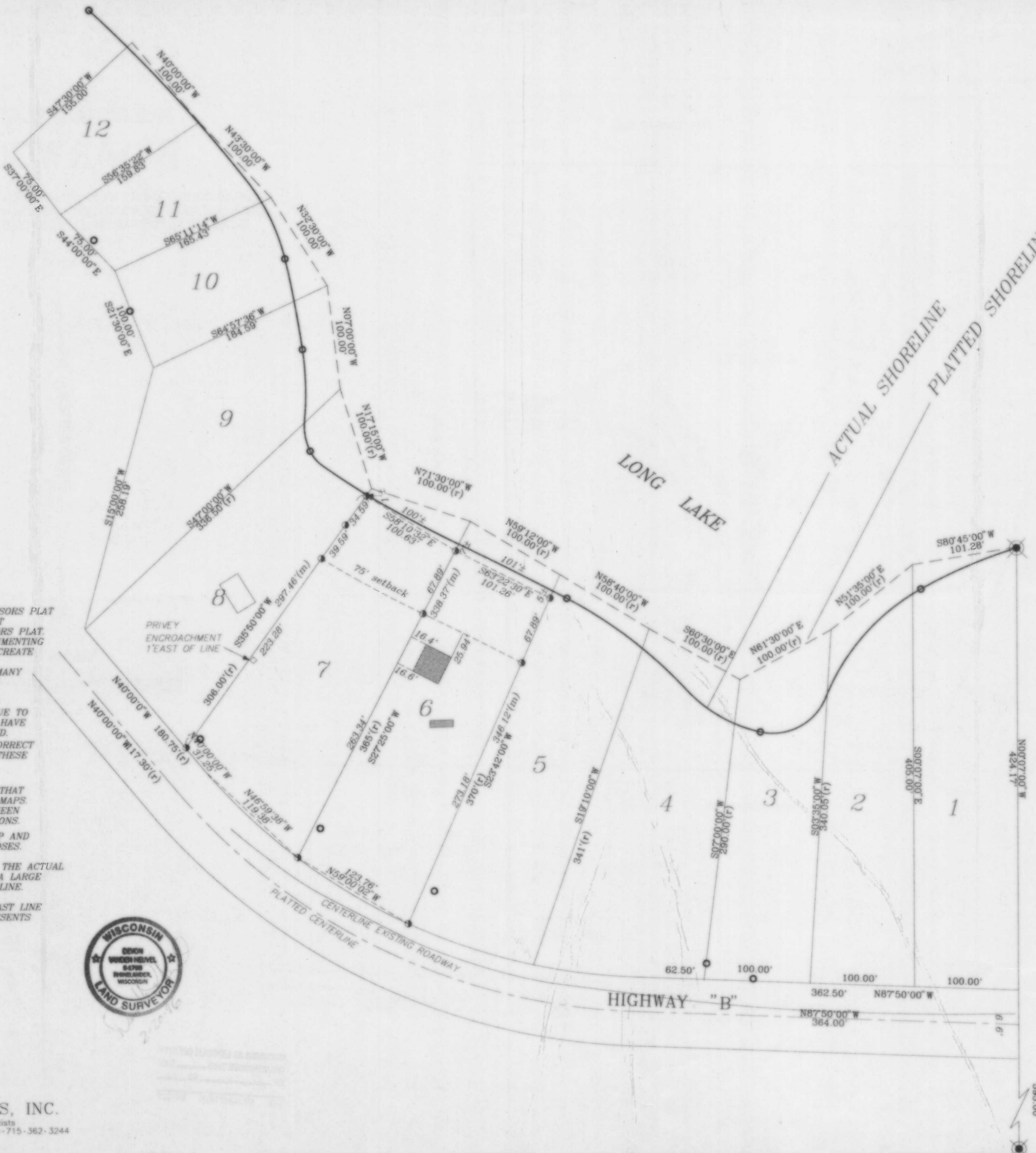
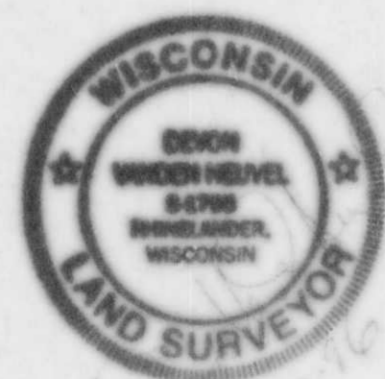
THE ASSESSORS PLAT OF O.R. SMITH'S SUBDIVISION WAS COMPLETED IN MAY OF 1952 BY SURVEYOR CARL M. MOE.

IN MY SURVEYING OF LOTS 6 AND 7 OF SAID ASSESSORS PLAT I FOUND MANY IRON PIPES IN PLACE WHICH DID NOT MATCH ANY DIMENSIONS ON THE RECORDED ASSESSORS PLAT. I DID FIND THE TWO 2" DIAMETER IRON PIPES MONUMENTING THE EAST LINE OF THE PLAT. I WAS ABLE TO RE-CREATE THE PLAT FROM THESE TWO IRON PIPES USING THE RECORDED BEARINGS AND DISTANCES. THERE ARE MANY DISCREPANCIES BETWEEN THE PLATTED INFORMATION AND THE CONDITIONS AS THEY EXIST IN THE FIELD. THE ACTUAL SHORELINE IN NO WAY RESEMBLES THE SHORELINE AS PLATTED. IT IS MY OPINION THAT DUE TO THE EXTREME SLOPE OF THE SHORE IT COULD NOT HAVE CHANGED SO DRAMATICALLY FROM WHAT WAS PLATTED. I DO NOT BELIEVE THAT THE ASSESSORS PLAT IS CORRECT IN REPRESENTING THE ACTUAL FIELD LOCATION OF THESE LOTS.

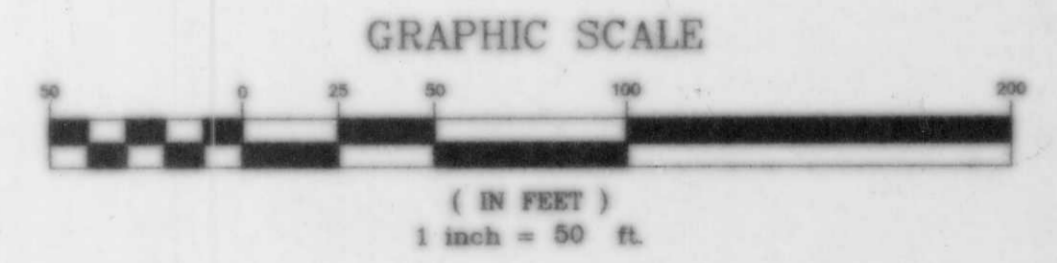
THE SURVEYORS CERTIFICATE ON THE PLAT STATES THAT THIS PLAT WAS PERFORMED BY THE AID OF AERIAL MAPS. THAT MAY EXPLAIN THE LARGE DISCREPANCIES BETWEEN THE PLATTED DIMENSIONS AND THE ACTUAL DIMENSIONS. I HAVE SHOWN THE EXISTING SHORELINE ON MY MAP AND THE SHORELINE AS PLATTED FOR REFERENCE PURPOSES.

I HAVE ALSO SHOWN HIGHWAY "B" AS PLATTED AND THE ACTUAL CENTERLINE AS IT EXIST IN THE FIELD. THERE IS A LARGE DIFFERENCE BETWEEN PLATTED AND ACTUAL CENTERLINE.

I BELIEVE BY RE-CREATING THE PLAT FROM THE EAST LINE WAS THE BEST METHOD AVAILABLE AND BEST REPRESENTS THE ACTUAL RECORDED ASSESSORS PLAT.



RECEIVED AT LINCOLN COUNTY COURTHOUSE THIS 19th DAY OF May 19 96  
TAX DESCRIPTION OFFICE



LEGEND

- 3/4" x 24" iron rod set
- ex. 1" dia. iron pipe
- ⊗ ex. 2" dia. iron pipe
- (m) measured distance
- (r) recorded plat distance
- existing building

**L207A**