

SPIRIT RIVER

FLOWAGE

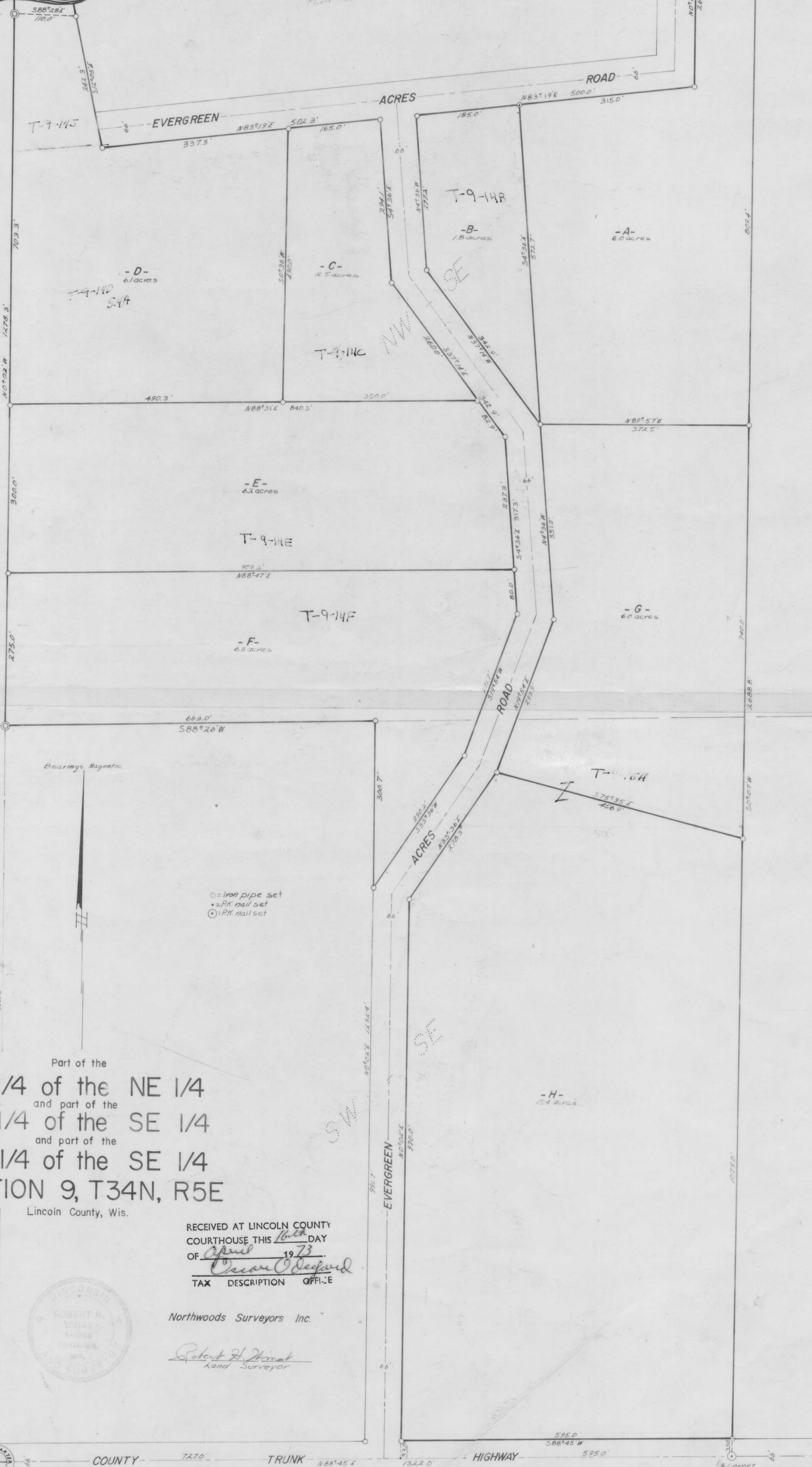
SE-NW

SE-NE

SW-NE

PLAT OF EVERGREEN ACRES

Meander Corner
1/4 Spruce
538°E 18.5'
1/4 W. Pine
570°W 24.1'



NE-SW

NE-SE

SE-SW

SE-SE

Part of the
SW 1/4 of the NE 1/4
and part of the
NW 1/4 of the SE 1/4
and part of the
SW 1/4 of the SE 1/4
SECTION 9, T34N, R5E
Lincoln County, Wis.

RECEIVED AT LINCOLN COUNTY
COURTHOUSE THIS 16th DAY
OF April 1973
Cassius O. DeFord
TAX DESCRIPTION OFFICE

Scale 1"=100'

September, 1972



Northwoods Surveyors Inc.

Robert H. Wink
Land Surveyor



COUNTY TRUNK HIGHWAY

1/4 Balsam 57°W 37.7'
P.M. nail in corner pole
156°W 42.5'

WIA