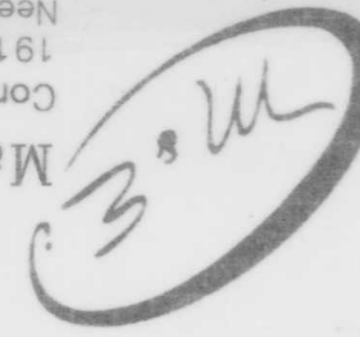


Martenson & Eisele, Inc.
 Consulting Engineering & Land Surveying
 1919 American Court
 Neenah, WI 54956
 Ph (414) 731-0381

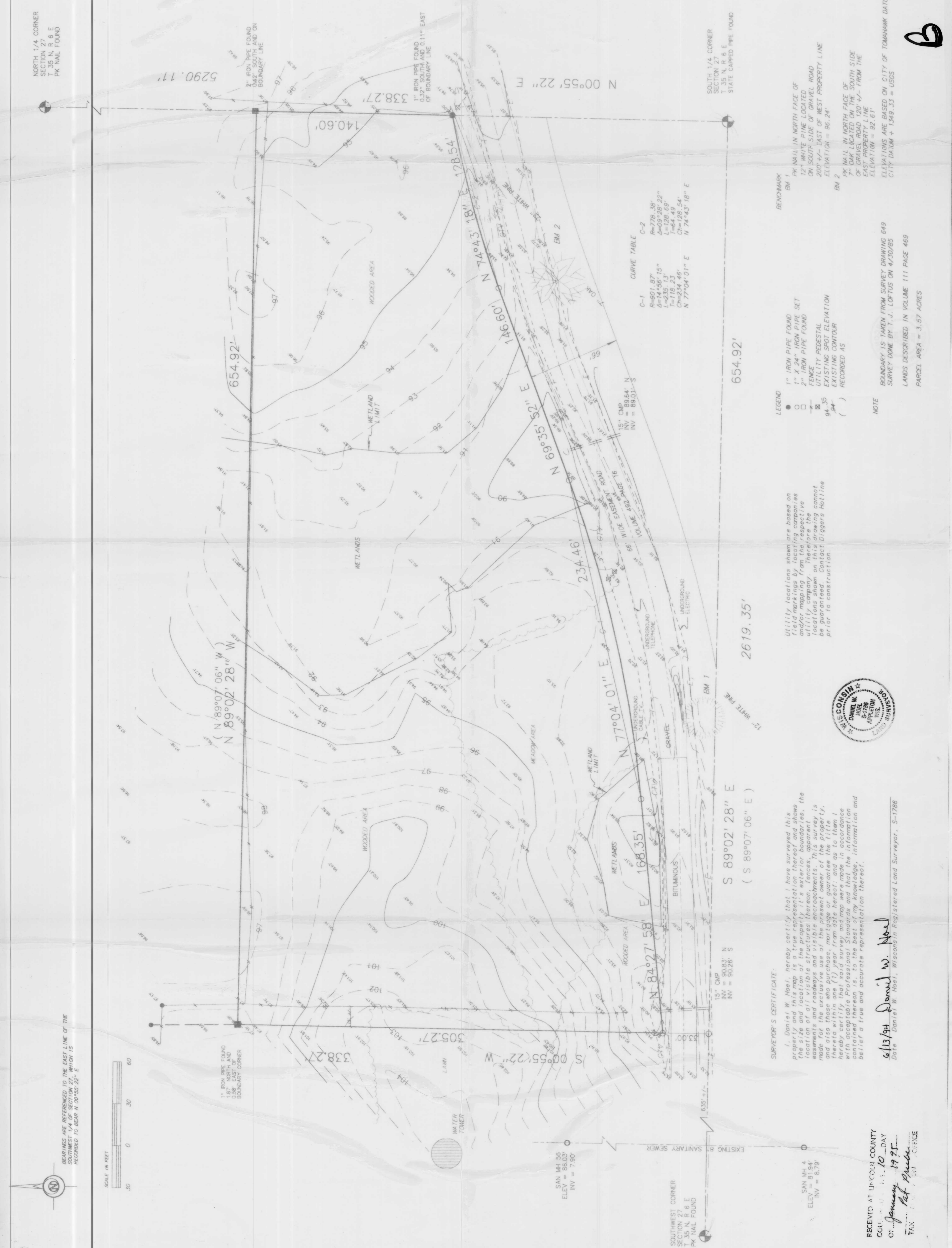


NO.	DATE	BY	REVISION

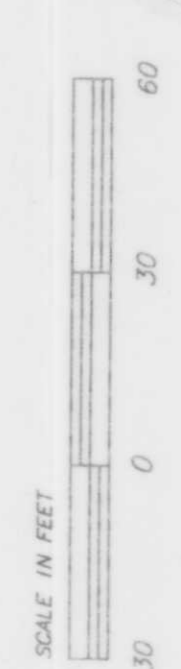
FOR: DECATHLON, INC.
 219 WASHINGTON STREET
 OSHKOSH, WI 54901
 TOWN 35 NORTH, RANGE 6 EAST, CITY OF TOMAHAWK, LINCOLN COUNTY, WISCONSIN
 PART OF THE SOUTHEAST 1/4 OF THE SOUTHWEST 1/4 OF SECTION 27,
 BOUNDARY AND TOPOGRAPHIC SURVEY

FIELD BOOK PAGE	
SCALE	1" = 30'
DATE	6-9-84
COMP. FILE	1331056

331-056



BEARINGS ARE REFERENCED TO THE EAST LINE OF THE SOUTHWEST 1/4 OF SECTION 27, WHICH IS RECORDED TO BEAR N 00°55'22" E



NORTH 1/4 CORNER SECTION 27 T. 35 N. R. 6 E. PK NAIL FOUND

3" IRON PIPE FOUND 0.42' SOUTH AND ON BOUNDARY LINE

1" IRON PIPE FOUND 0.32' SOUTH AND 0.11' EAST OF BOUNDARY LINE

SOUTH 1/4 CORNER SECTION 27 T. 35 N. R. 6 E. STATE CAPPED PIPE FOUND

15" CMP 89.64' N INV = 89.01' S

15" CMP 77.04' N INV = 89.01' S

15" CMP 74.43' N INV = 89.01' S

15" CMP 72.54' N INV = 89.01' S

15" CMP 70.65' N INV = 89.01' S

15" CMP 68.76' N INV = 89.01' S

15" CMP 66.87' N INV = 89.01' S

15" CMP 64.98' N INV = 89.01' S

15" CMP 63.09' N INV = 89.01' S

15" CMP 61.20' N INV = 89.01' S

15" CMP 59.31' N INV = 89.01' S

15" CMP 57.42' N INV = 89.01' S

15" CMP 55.53' N INV = 89.01' S

15" CMP 53.64' N INV = 89.01' S

15" CMP 51.75' N INV = 89.01' S

15" CMP 49.86' N INV = 89.01' S

15" CMP 47.97' N INV = 89.01' S

15" CMP 46.08' N INV = 89.01' S

15" CMP 44.19' N INV = 89.01' S

15" CMP 42.30' N INV = 89.01' S

15" CMP 40.41' N INV = 89.01' S

15" CMP 38.52' N INV = 89.01' S

15" CMP 36.63' N INV = 89.01' S

15" CMP 34.74' N INV = 89.01' S

15" CMP 32.85' N INV = 89.01' S

15" CMP 30.96' N INV = 89.01' S

15" CMP 29.07' N INV = 89.01' S

15" CMP 27.18' N INV = 89.01' S

15" CMP 25.29' N INV = 89.01' S

15" CMP 23.40' N INV = 89.01' S

15" CMP 21.51' N INV = 89.01' S

15" CMP 19.62' N INV = 89.01' S

15" CMP 17.73' N INV = 89.01' S

15" CMP 15.84' N INV = 89.01' S

15" CMP 13.95' N INV = 89.01' S

15" CMP 12.06' N INV = 89.01' S

15" CMP 10.17' N INV = 89.01' S

LEGEND
 ● 1" IRON PIPE FOUND
 ○ 1" X 24" IRON PIPE SET
 □ 2" IRON PIPE FOUND
 --- FENCE
 --- UTILITY PEDESTAL
 --- 94.35 EXISTING SPOT ELEVATION
 --- 94.34 EXISTING CONTOUR
 () RECORDED AS

BENCHMARK
 BM 1 PK NAIL IN NORTH FACE OF 12" WHITE PINE LOCATED ON SOUTH SIDE OF GRAVEL ROAD 200' +/- EAST OF WEST PROPERTY LINE ELEVATION = 96.24'
 BM 2 PK NAIL IN NORTH FACE OF 7" OAK LOCATED ON THE SOUTH SIDE OF GRAVEL ROAD 120' +/- FROM THE EAST PROPERTY LINE ELEVATION = 92.61'

NOTE
 BOUNDARY IS TAKEN FROM SURVEY DRAWING 649 SURVEY DONE BY T. J. LOFTUS ON 4/30/85
 LANDS DESCRIBED IN VOLUME 111 PAGE 469
 PARCEL AREA = 3.57 ACRES

CURVE TABLE
 C-1
 R=901.87'
 d=145.15"
 L=118.23'
 C=234.46'
 N 77°04'01" E N 74°43'18" E
 C-2
 R=778.38'
 d=09.28' 22"
 L=126.69'
 C=128.54'
 N 74°43'18" E

UTILITY LOCATIONS shown are based on field markings from the utility companies and/or mapping from the utility companies. Therefore, the locations shown on this drawing cannot be guaranteed. Contact Diggers Hotline prior to construction.

SURVEYOR'S CERTIFICATE:
 I, Daniel W. Hoel, hereby certify that I have surveyed this property and this map is a true and accurate representation of the size and location of the property's exterior boundaries, the location of all visible structures thereon, fences, apparent easements and roadways and visible encroachments. This survey is made for the exclusive use of the present owner of the property, and also those who purchase, mortgage or guarantee the title thereto within one (1) year from date hereof; and as to them I hereby certify that said survey and map were made in accordance with the laws of Wisconsin and that the information contained thereon is to the best of my knowledge, information and belief a true and accurate representation thereof.

6/13/84 Daniel W. Hoel
 Date Daniel W. Hoel, Wisconsin Registered Land Surveyor, S-1786

RECEIVED AT LINCOLN COUNTY COURT ROOM, 3.10 DAY OF January 1984
 TAX OFFICE

PRINTED JUN 09 1984 THIS DAY