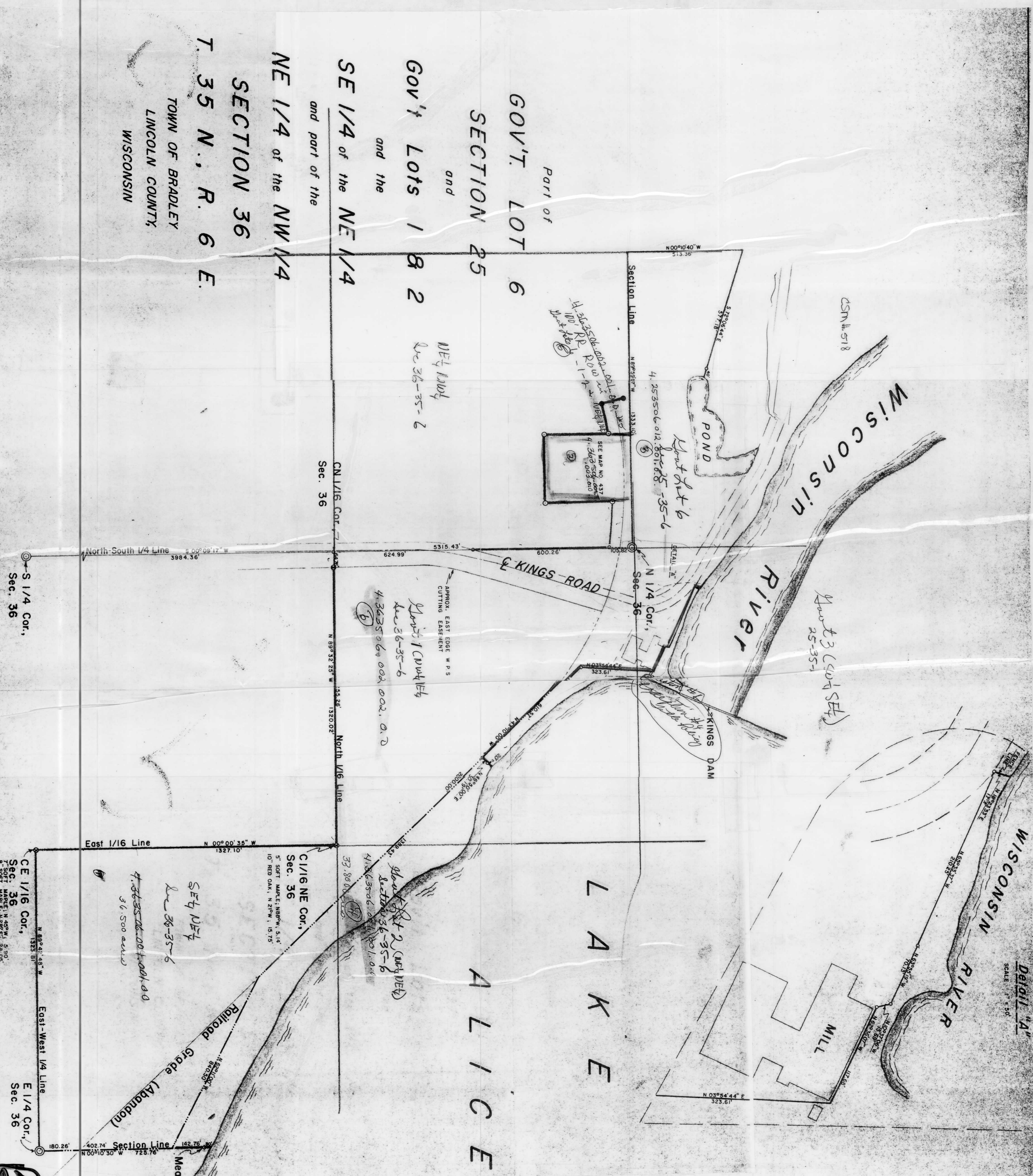


Detail "A"
SCALE 1" = 50'



PART OF
GOV'T. LOT 6
SECTION 25
and
GOV'T LOTS 1 & 2
and the
SE 1/4 of the NE 1/4
and part of the
NE 1/4 of the NW 1/4
SECTION 36
T. 35 N., R. 6 E.
TOWN OF BRADLEY
LINCOLN COUNTY,
WISCONSIN

Section Line
N 89° 32' 23" W 1333.10'
N 00° 00' 35" W 1327.10'
N 89° 32' 23" W 1330.02'
N 00° 00' 35" W 1327.10'
N 89° 32' 23" W 1323.01'
N 89° 32' 23" W 1323.01'
N 89° 32' 23" W 1323.01'
N 89° 32' 23" W 1323.01'

Section Line
N 89° 32' 23" W 1333.10'
N 00° 00' 35" W 1327.10'
N 89° 32' 23" W 1330.02'
N 00° 00' 35" W 1327.10'
N 89° 32' 23" W 1323.01'
N 89° 32' 23" W 1323.01'
N 89° 32' 23" W 1323.01'
N 89° 32' 23" W 1323.01'

Section Line
N 89° 32' 23" W 1333.10'
N 00° 00' 35" W 1327.10'
N 89° 32' 23" W 1330.02'
N 00° 00' 35" W 1327.10'
N 89° 32' 23" W 1323.01'
N 89° 32' 23" W 1323.01'
N 89° 32' 23" W 1323.01'
N 89° 32' 23" W 1323.01'

LEGEND

- ⊙ BERTSSEN MONUMENT FOUND IN PLACE
- 2" IRON PIPE, SET SURVEY NO. 364
- 1 1/2" IRON PIPE, SET SURVEY NO. 437
- 1 1/4" IRON PIPE, SET THIS SURVEY
- 1 1/4" WELL POINT, FOUND IN PLACE
- 1 1/4" WELL POINT, SET THIS SURVEY
- F.R.C. BOUNDARY
- 1" IRON PIPE, SET SURVEY NO. 765

TIMBERLAND SURVEYORS, INC. TOMAHAWK
SURVEY FOR
Tomahawk Power & Pulp, Co.
Kings Dam Road
Tomahawk, Wisconsin

RECEIVED AT LINCOLN COUNTY
COURTHOUSE THIS 15th DAY
OF APR 1989
TAX DESCRIP. (C) 1989

DATE 4 MAY 82 DWN. BY L.J.S. SCALE 1" = 200'
REVISED 28 FEB 89 BY L.J.S.
REVISED 24 MAR 89 BY L.J.S.

DWG. NO. 437-1

