

R/W PROJECT NUMBER	1595-00-21
FEDERAL PROJECT NUMBER	
REVISION DATE	12-14-81 3-2-82 5-12-82 4-23-90
SHEET NUMBER	4.3
PLAT OF RIGHT OF WAY REQUIRED FOR <b>BRADLEY-RHINE LANDER</b> HEAFFORD JUNCTION OVERHEAD U.S.H. 8 LINCOLN COUNTY	
SCALE	1" = 200 FT.
DATE	OCTOBER 7, 1981
CONSTRUCTION PROJECT NUMBER	

**BEARING ORIENTATION AND GRID CONVERSION**  
 COORDINATE SYSTEM WITH 0 DEGREES, 0 MINUTES, 0 SECONDS BEING GRID NORTH.  
 THE DIFFERENCE BETWEEN PROJECT PLAT BEARINGS REPRESENT PLANE ANGLES IN DEGREES, MINUTES AND SECONDS TO THE NEAREST SECOND. R/W PLAT DISTANCES ARE GRID LENGTHS UNLESS OTHERWISE NOTED AND MAY BE CONVERTED TO GROUND LENGTHS BY MULTIPLYING PLAT DISTANCES BY 1.000095

**SCHEDULE OF LANDS & INTERESTS REQUIRED**

INTEREST	L.H.E. ACRES	ACRES REQUIRED	NEW R/W REQUIRED	EXISTING R/W	TOTAL R/W	TOTAL REMAINING ACRES	OPERATIONS PROJECT NO.
FEE	---	0.18	0.18	---	0.18	17.02	1595-00-21
FEE	---	0.17	0.17	---	0.17	0.83	1595-00-21

IRON ROD IN CENTER OF ROAD  
 N 622,230.39  
 E 2,073,421.35

PARCEL NO.	OWNER
4	MORBARK INDUSTRIES INC.
6	MACH FARMS INC. ET AL.

2.94 ACRES DECLARED EXCESS PROPERTY BY DIVISION OF HIGHWAYS AND TRANSPORTATION FACILITIES 4-2-82 RELEASED BY O.C.D. TO GERALD E. ROBERTS ET AL

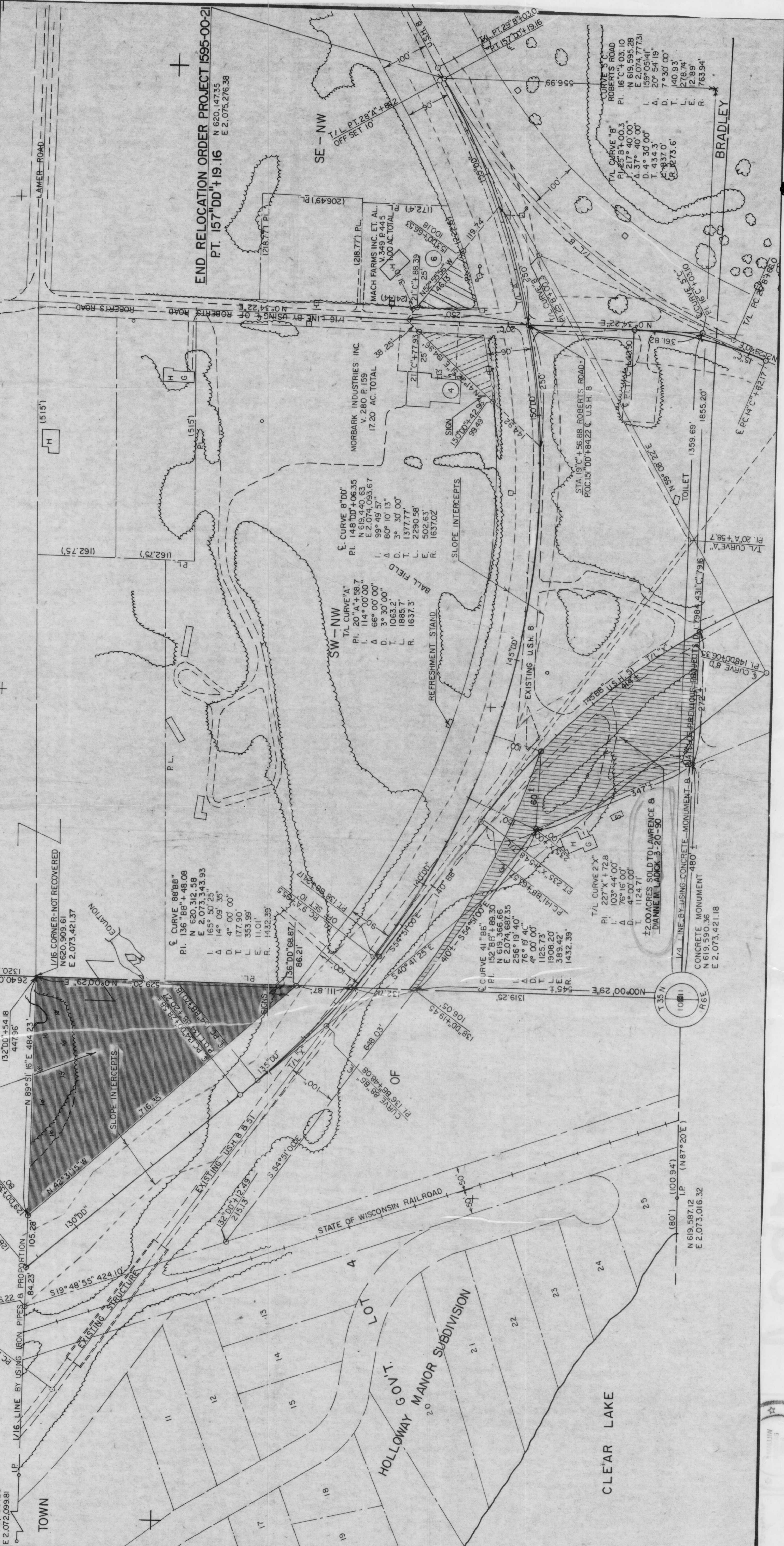
1/16 CORNER 1/4 SECTION 26  
 N 620,906.26  
 E 2,072,099.81

1/16 CORNER - NOT RECOVERED  
 N 620,909.61  
 E 2,073,421.37

1/4 LINE BY USING CONCRETE MONUMENT B  
 N 619,590.36  
 E 2,073,016.32

1/4 LINE BY USING CONCRETE MONUMENT B  
 N 619,590.36  
 E 2,073,016.32

1/4 LINE BY USING CONCRETE MONUMENT B  
 N 619,590.36  
 E 2,073,016.32



*BS*

