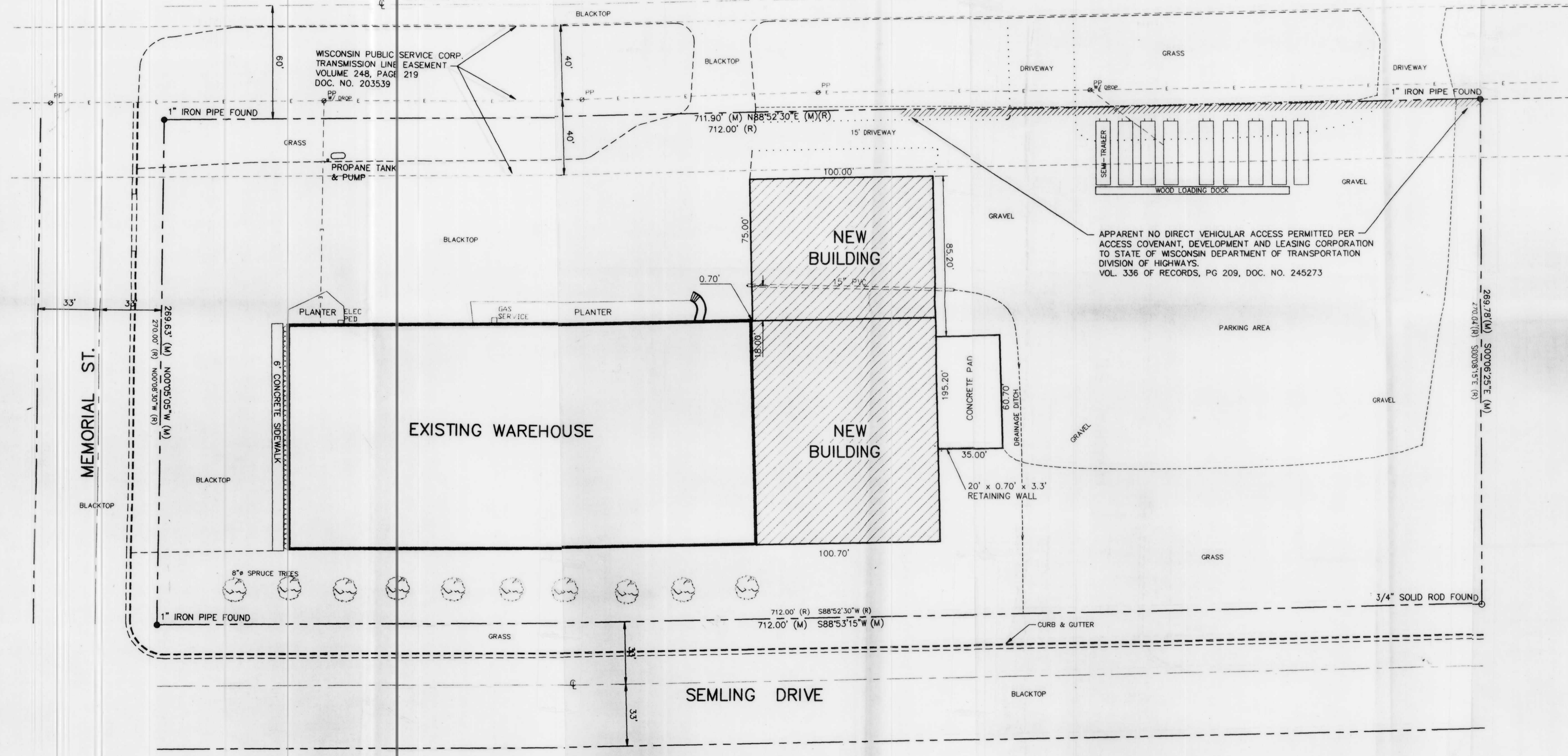


DONALD D. FRISQUE
 S-12180
 Wausau Wis.
 BECKER-HOPPE ASSOCIATES, INC., WAUSAU, WI.
 BY DONALD D. FRISQUE S-1218, 4/12/94
 LAND SURVEYOR

NORTH LINE OF NE1/4-NE1/4 - 7-31-7

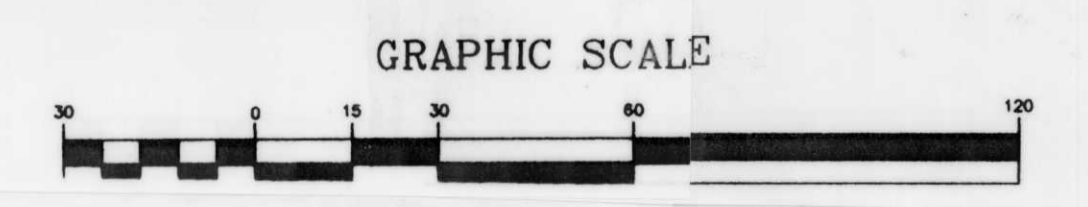
S.T.H. 17



APPARENT NO DIRECT VEHICULAR ACCESS PERMITTED PER ACCESS COVENANT, DEVELOPMENT AND LEASING CORPORATION TO STATE OF WISCONSIN DEPARTMENT OF TRANSPORTATION DIVISION OF HIGHWAYS. VOL. 336 OF RECORDS, PG 209, DOC. NO. 245273

MEMORIAL ST.

SEMLING DRIVE



7-31-7
 NE NW



L1