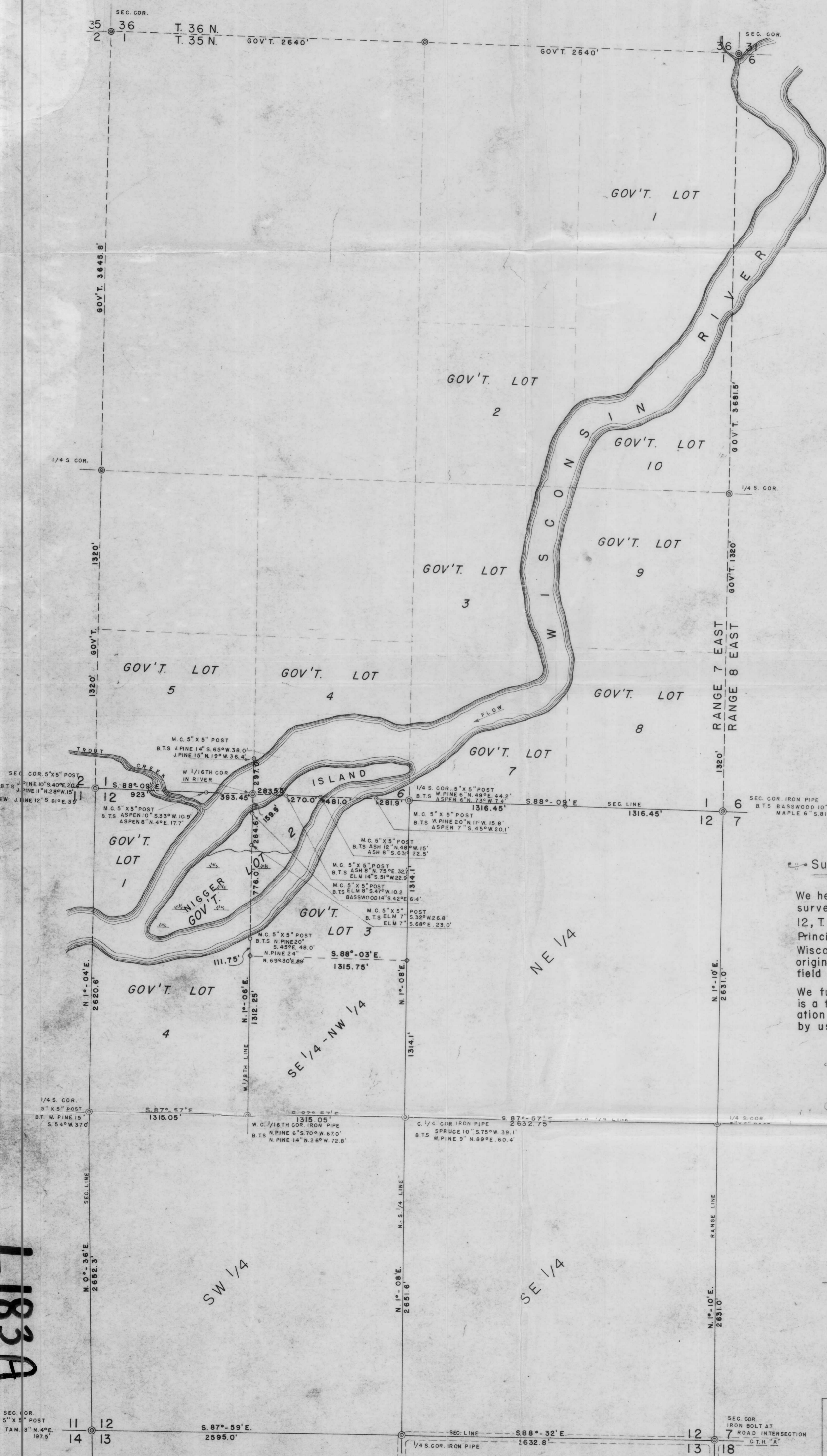


SEC. 1 & SEC. 12, T. 35 N., R. 7 E. OF THE 4TH P.M.
LINCOLN COUNTY, WISCONSIN



Surveyor's Certificate

We hereby certify that we have surveyed and subdivided Sec. 12, T. 35 N., R. 7 E. of the 4th Principal Meridian, Lincoln County, Wisconsin by retracement from original Government corners and field notes.

We further certify that this map is a true and correct representation of the lands so surveyed by us.

GENISOT ENGINEERING CO.
F.R. Wincentsen
 F. R. WINCENTSEN, SURVEYOR
J.M. Abernathy
 J. M. ABERNATHY, SURVEYOR

UNMARKED CORNER



SURVEY FOR WISCONSIN PUBLIC SERVICE CORPORATION	
MARCH 17, 1949.	DRAWN BY ER.W.
DWG NO. 519-1	GENISOT ENGINEERING CO. RHINELANDER, WIS.