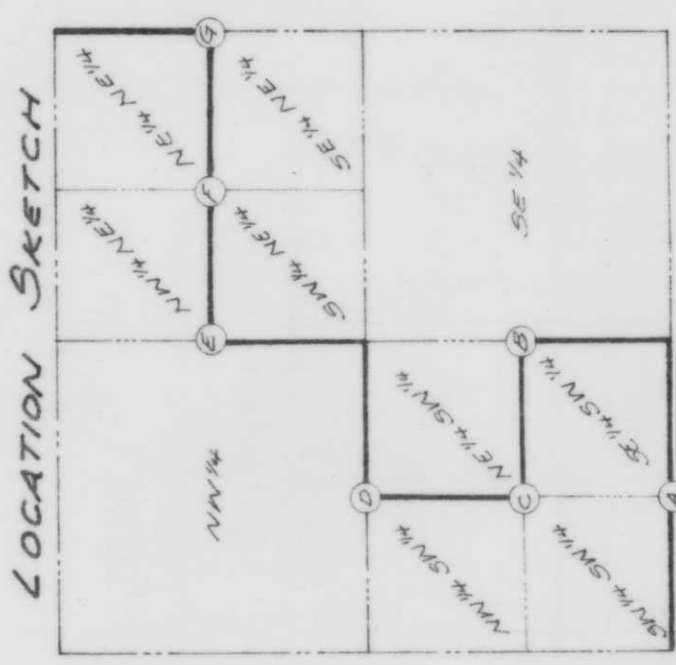


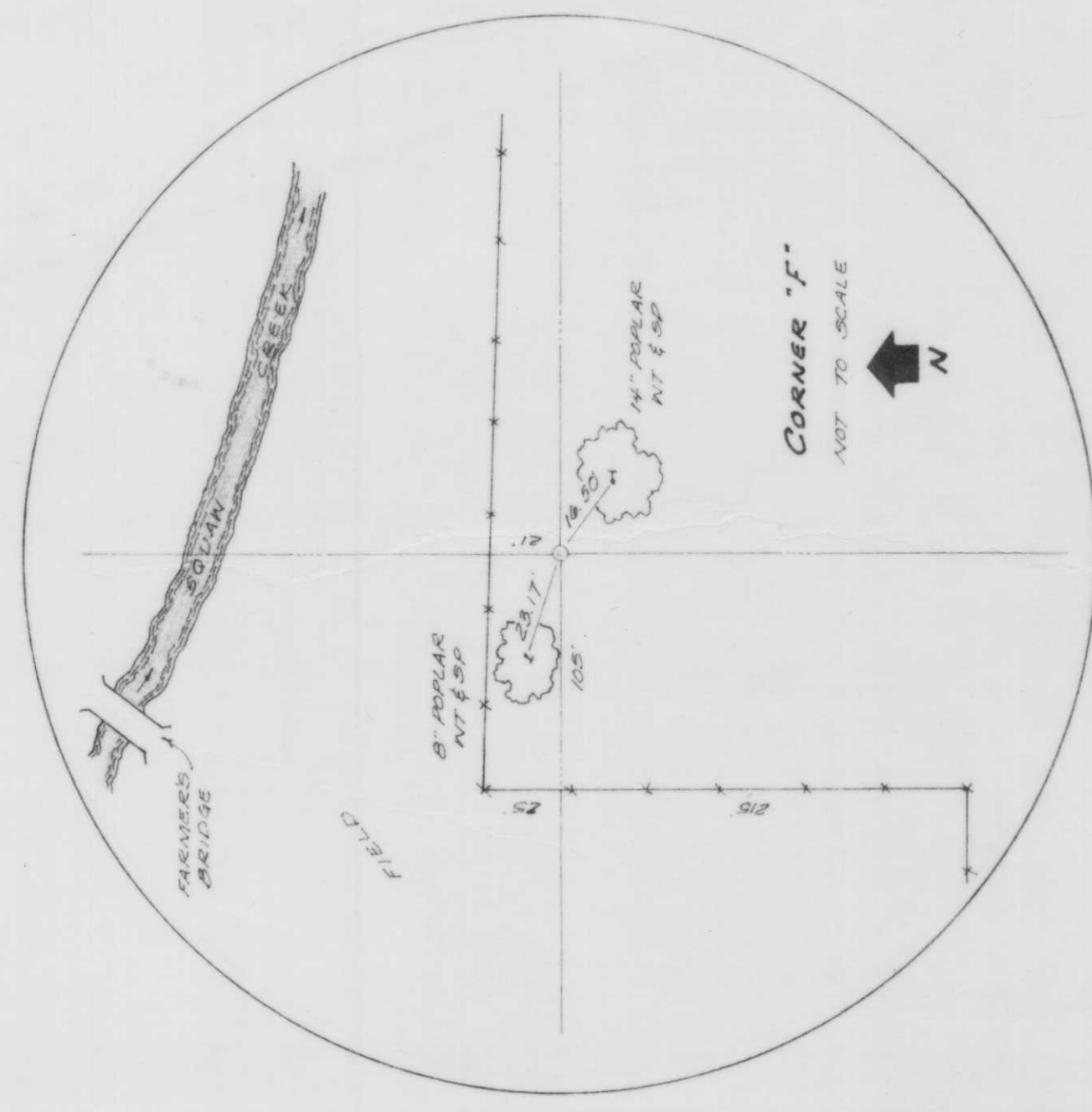
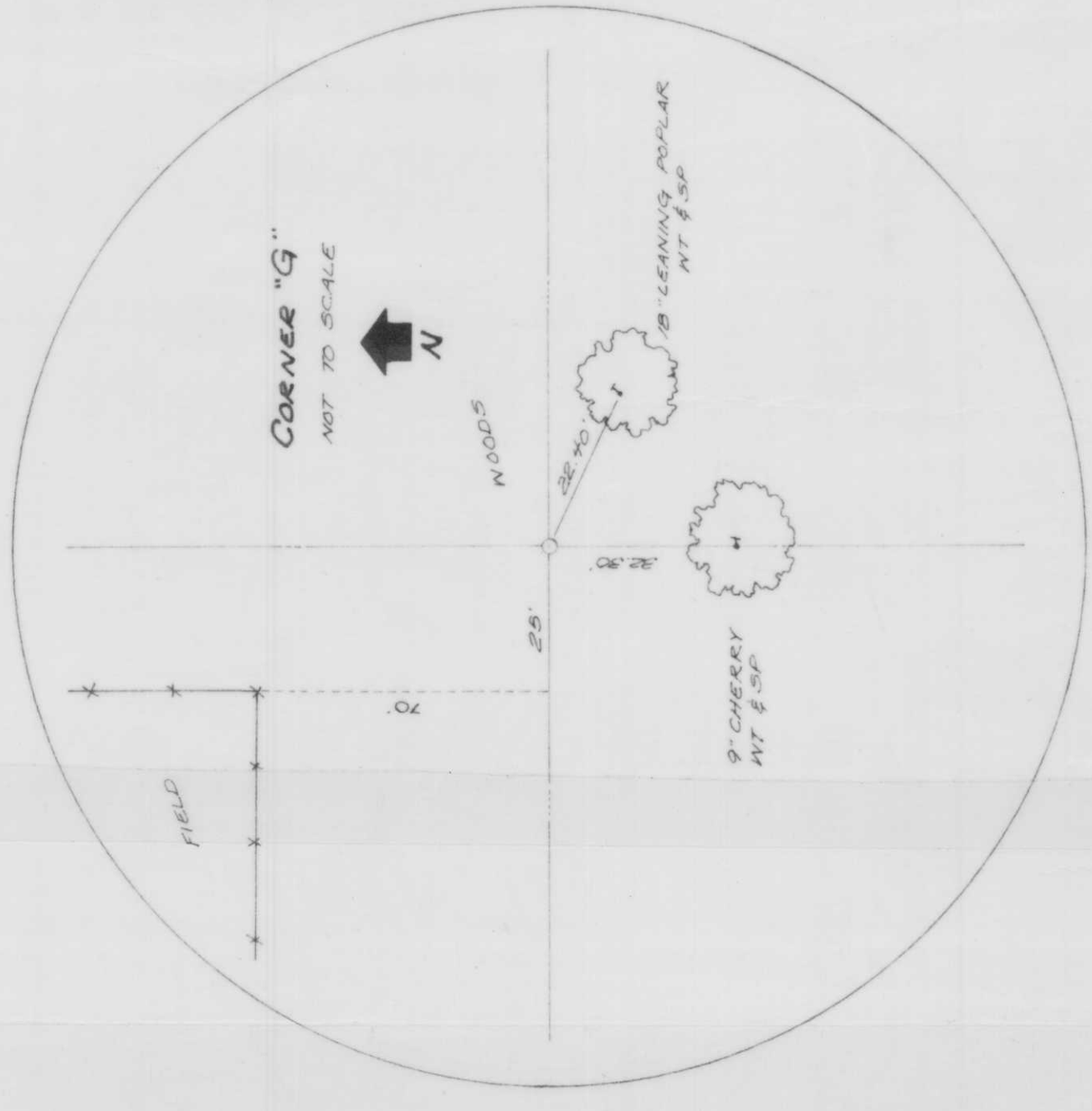
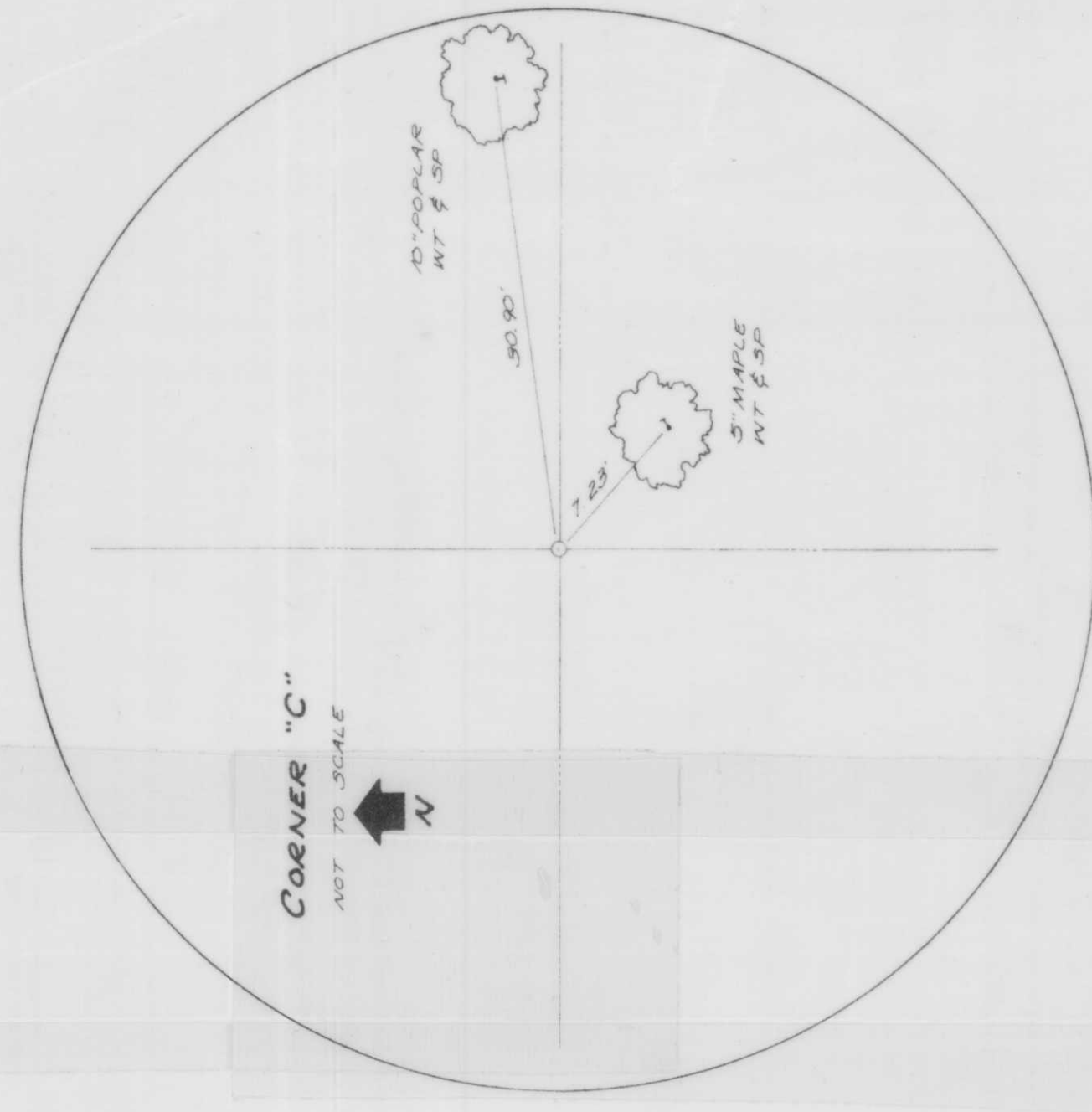
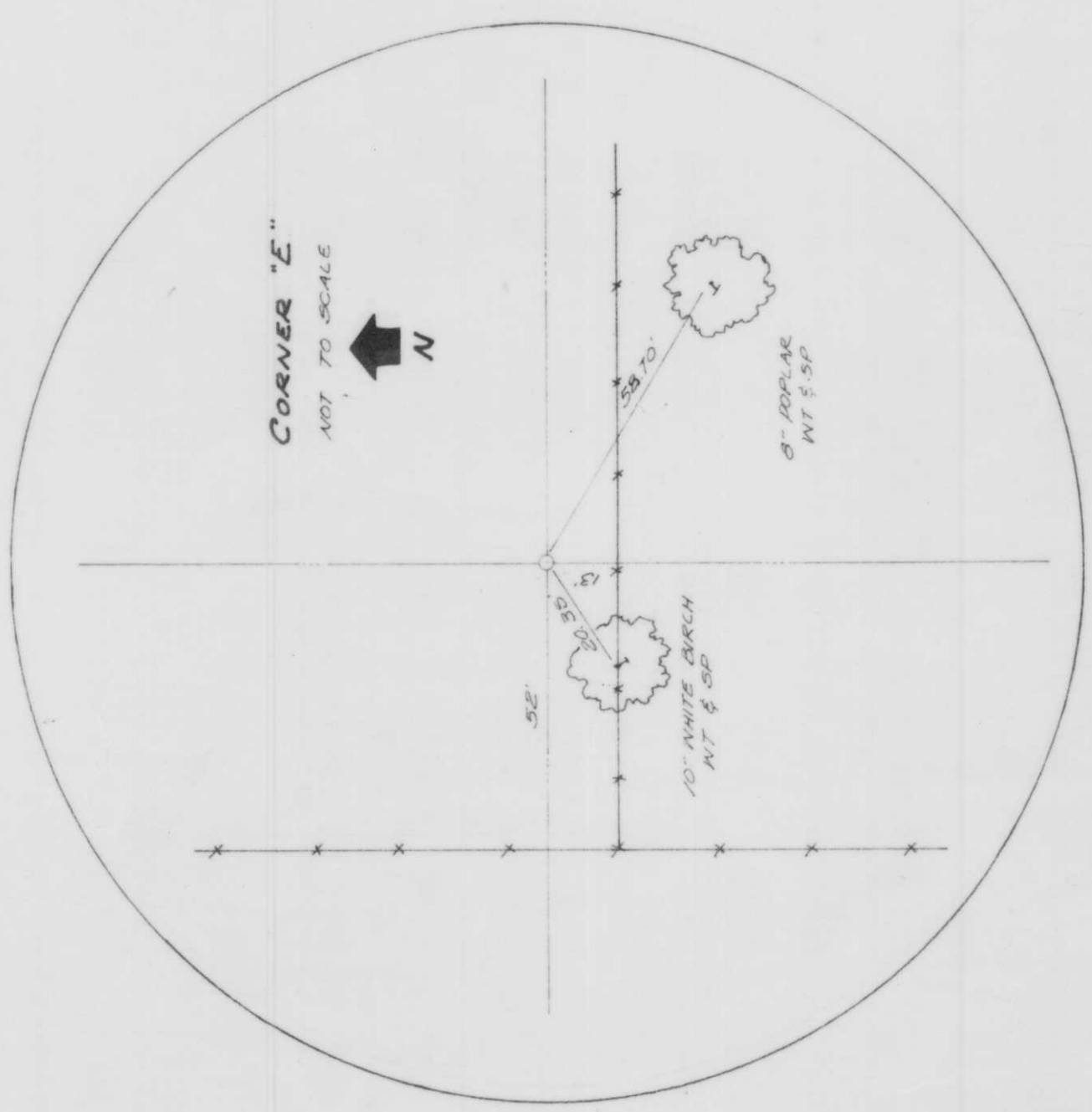
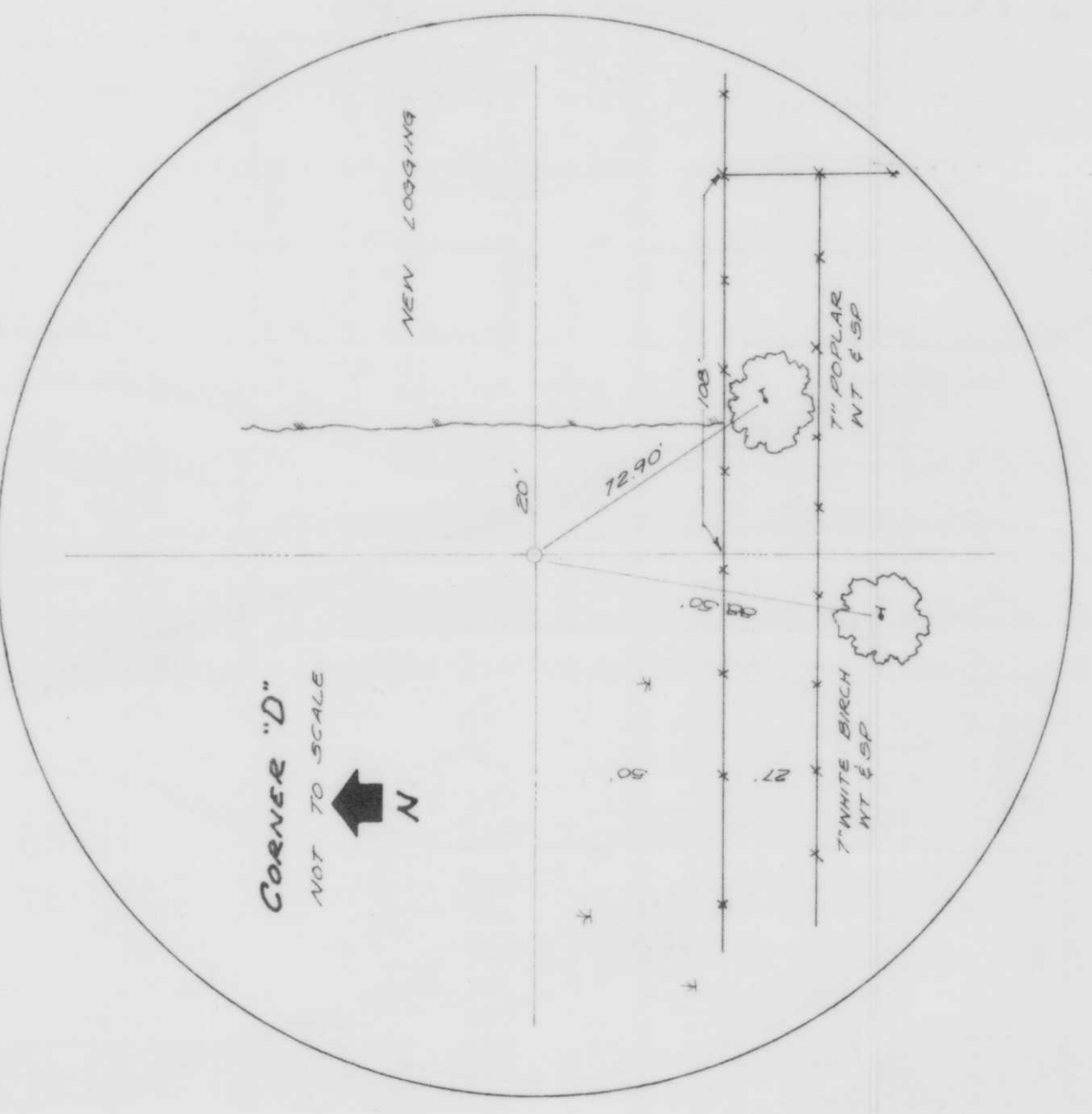
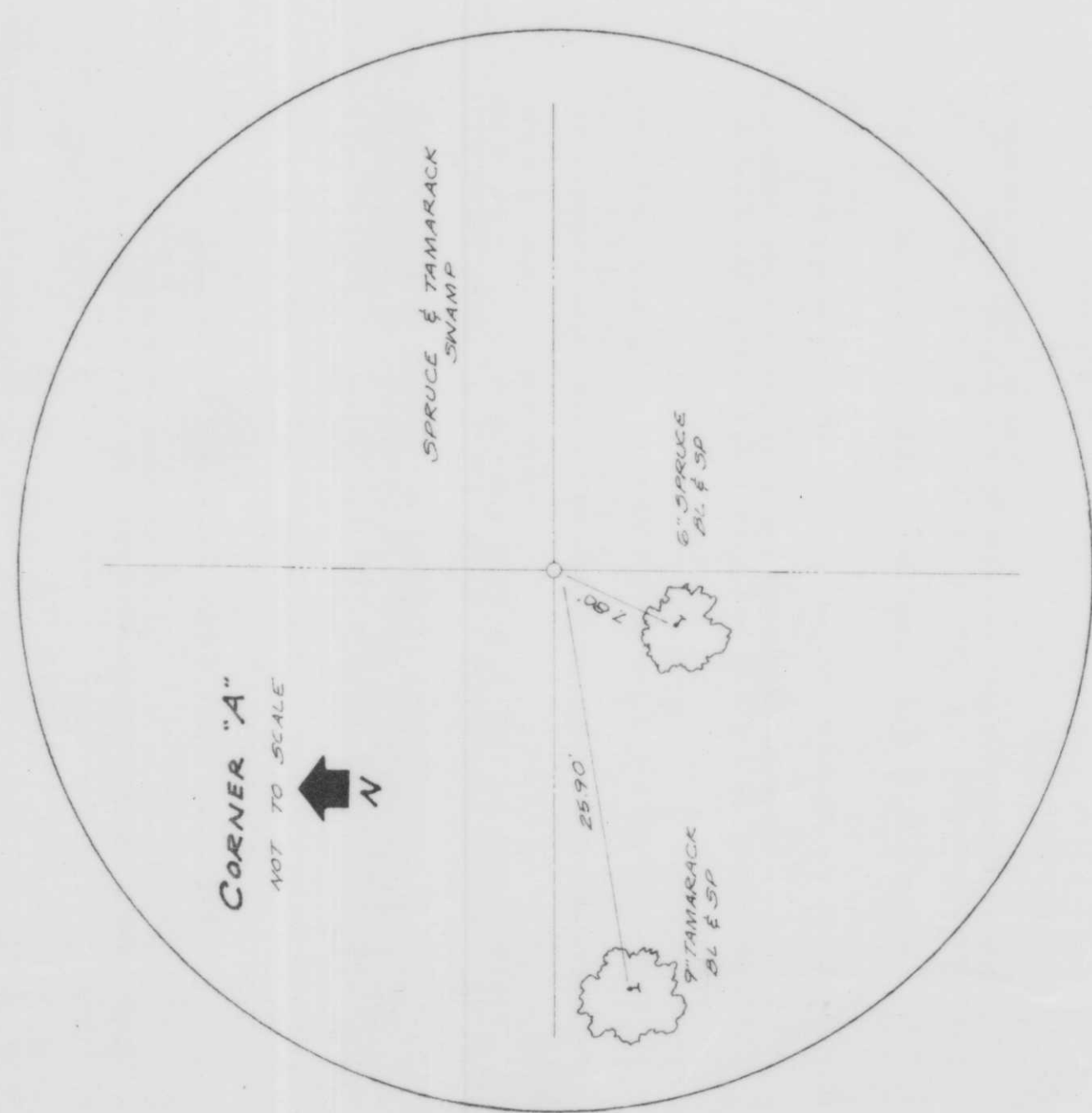
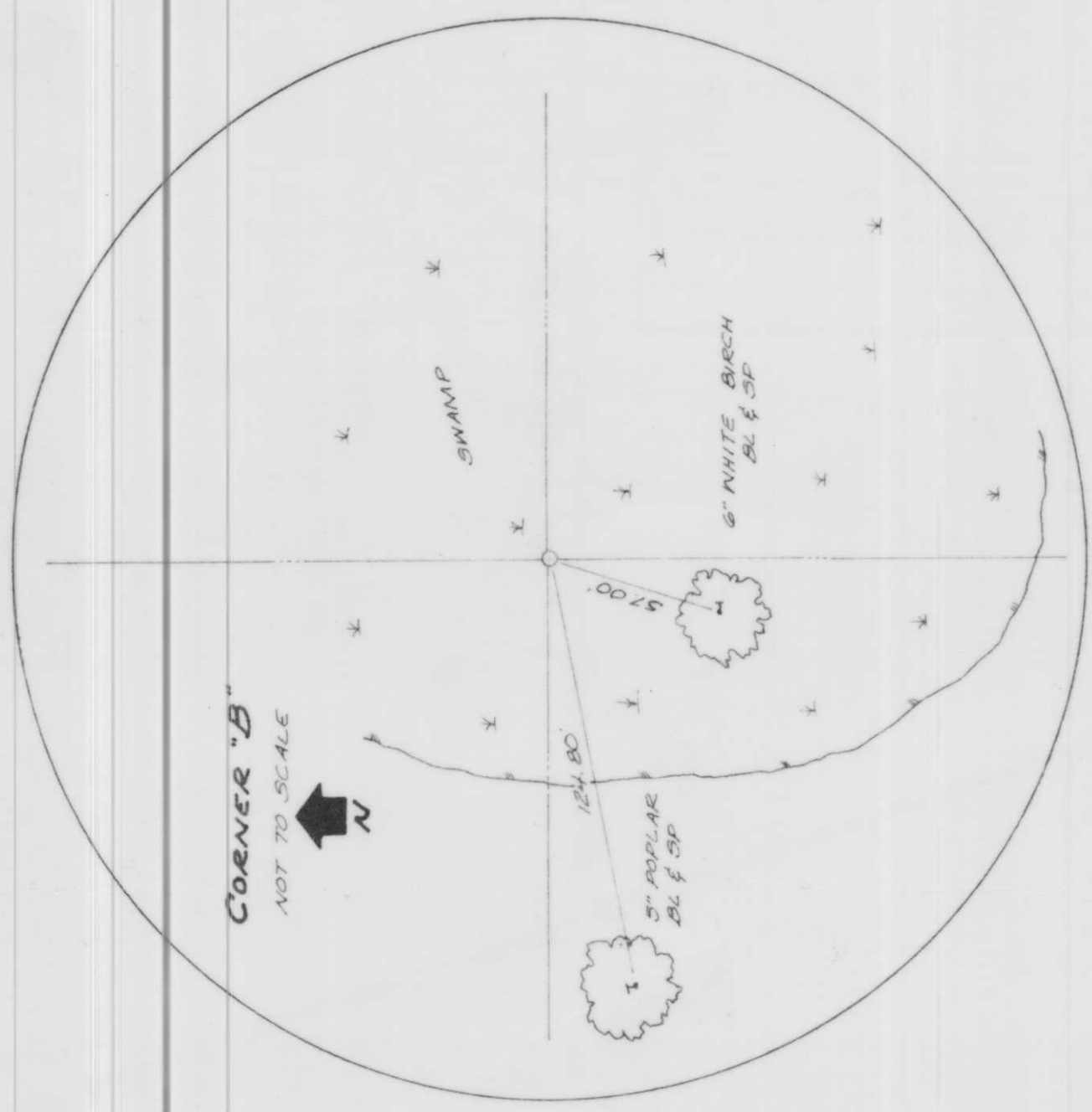
FIELD TIES
TO
1/16 CORNERS



SECTION 30, 35, 40, 45
TOWNSHIP 30S, RANGE 14E
COUNTY OF SHERIDAN, WYOMING

CORNER	CORNER LOCATION	FIELD BOOK & PAGE
A	SOUTH CORNER OF THE SW 1/4 SEC. 30, 35, 40, 45	FB 96 P 32
B	EAST CORNER OF THE SW 1/4 SEC. 30, 35, 40, 45	FB 96 P 32
C	CENTER OF THE SW 1/4 SEC. 30, 35, 40, 45	FB 96 P 32
D	NORTH CORNER OF THE SW 1/4 SEC. 30, 35, 40, 45	FB 96 P 32
E	WEST CORNER OF THE NW 1/4 SEC. 30, 35, 40, 45	FB 96 P 30
F	CENTER OF THE NW 1/4 SEC. 30, 35, 40, 45	FB 96 P 49
G	EAST CORNER OF THE NW 1/4 SEC. 30, 35, 40, 45	FB 96 P 48

LEGEND
 0.2" x 1/4" IRON PIPE SET ~ 3.65 LB/FT - WITH LEAF SPRING ANCHOR
 SWAMP
 FENCE
 1" IRON PIPE SET
 1/4" LINE
 SECTION LINE
 BLAZED
 SPIKE
 NOT RECORDED IN TREE



RECEIVED AT LINCOLN COUNTY
COURTHOUSE THIS 19 DAY
OF 1900

DESCRIPTION OFFICE

L120 A

LINCOLN COUNTY, WYOMING
DEPARTMENT SECTION 30, 35, 40, 45
TOWNSHIP 30S, RANGE 14E
SECTION 30, 35, 40, 45
FIELD TIES TO 1/16 CORNERS

APPROVED BY: [Signature]
DATE: 1900
SCALE: 1" = 100'

DRAWN BY: [Signature]
REVISED:
DRAWING NUMBER: 1145

