

9-31-6 E.

Survey - Council Grounds
State Forest
(Merrill).

CAR-FERRY

POCKET NOTES



No. 42

5 Cents

Jan'y & Feb. 1939

Ray H. Hall

Abbreviations used:

- ∠ = angle
SW_x = South-west corner
E = East line
Var. = Magnetic Variation
T.A. = True Azimuth
ch. = chains
' = feet
P.R. = pro rate
C = center line
C = Center (of Sec.)
A = Transit
Rand. = random, or trial line

W. D.

City of Merrill to State
of Wisconsin

Lots One (1) two (2) three (3) four (4)
+ five (5) in Section Nine (9)
T 31 N R 6 E 4th PM

Excepting + reserving from this
conveyance that certain piece
or parcel of land in Lot 4
(Sec 9 - 31 - 6) described as
follows: to wit: Commencing at
the SW corner of the NE NW
of Sec. Two + R. aforesaid, and
running thence West along the
eighth line, a distance of eight
hundred (800) feet to an iron
pipe in the ground - this
establishes the place of beginning
of the land herein reserved -
- Thence running South and
parallel to the East lot line of
Lot 4 to the Meander line of

Jan'y 24th '39

9:10 lv. Camp in #28 (Ford)

10:00 arriv Tomahawk
Confer with Choiniski
M = Coy
Borrow plat and
description of park

10:55 lv. Tomahawk

11:40 arriv Merrill

lunch

50¢

1:05 reach Park

1:30 return to Merrill with
Kellogg + call at Court
House

- Copy pertinent Govt.
Field notes

Steckbar wants \$5 for book
of 1934 CWA field notes!

Call at Public Service.

Mr. Tank loans us 3 blue
prints and phones Mr.

Schlei at grandfather.

Call on City Eng'g
(Mr. Delaglise out)

Dinner 50¢

Lodge at W. F. Keisse house, 109 Polk St.

Trial E+W $\frac{1}{4}$ line.

Jan'y 25th 1939 -20°F
Hall + 4 WPA workers.

Run trial line Ely from "Center"
found: - then blazed fence post
" 6.63 ch. E of C.

R 7 ch. ± E of C
Mag. var. 1°-07' E

Line thus projected fell .115 ch S. of
E $\frac{1}{4}$ which is 6x6" stone 1"
above ground, and with drill hole
in center. This stone recognized
as $\frac{1}{4}$ S.

Chain W by on random 1/4 line

Corrections

0.0 Point .115 ch S of 7 (106)
3.502 R (= E to N) 1° 53' 1/2
3.504 ch.)

11.27 Back sight (.083)
19.883 " " (.058)

20.11 ^{1927.3} fence N + S
(.44 ch N of E + W fence)

33.25 ^{2194.5} Picket ^{108.9} 1.65 N of do. (.0198)
33.45 ²²⁰⁵ fence N + S

40.081 C (post found).
^{2645.7}

" " $\frac{.115}{.00287} = \text{Tang } 0^{\circ} 10'$
fell S. of 7

∴ ⊥ to corrected line is
1° 15' W of Mag. needle
∴ Val = 1° 15' E,

Jan'y 25th PM with T. B. Kellogg

Called on Mayor An Buckor in
effort to secure CWA notes

of 1934
(Geo Posey - Engr.).

Alex Delaglise (City Engr.) also at
mayor's office.

" minimizes accuracy of CWA
survey.

We ask Mr. Tank to send to
Green Bay for Schlei's notes.

Balance of PM on
E+W 1/4 line.

→ I make discovery -
Rear chairman unable to
read numerals on tape
as he left his spectacles
at home!

E + W 1/4 line

Jan'y 26th '39 +10° Fair

Chains.

Run W 1/4 (S89°52'W)
from C on curved
course by $\pm 0-10'$
W to S off random
projected.

40.087 ^{270.5} C. found
40.40 \pm road SE + NW
46.729 hub 53.979 & 58.07

59.793 ^{3946.3} P.R. for W 1/8 on 1/4 line

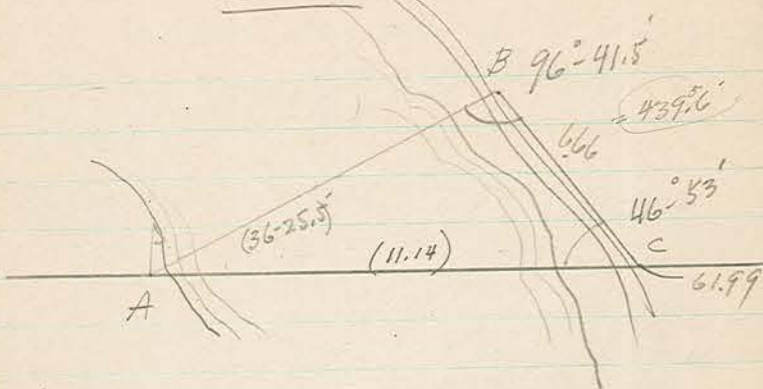
59.794 fell .017 ch S. of
stake found marked 1/320

60.00 tempy hub
61.99 spike for hub and
lay off Δ base NWly
along road. 6.66 ch.

$$\begin{array}{r} 41^{\circ} 04' \\ 39^{\circ} 46' \\ \hline 15^{\circ} 58' \end{array}$$

$$\begin{array}{r} 264 \\ 39^{\circ} 46' \\ \hline 42^{\circ} 14' \end{array} \text{ shore}$$

E+W 7 lms



$$b = \frac{a}{\sin A} \sin B$$

$$\therefore \frac{6.66}{.59377} \times .99318 = 11.1395 \text{ ch.}$$

62.19	^{4104.5} E	road
63.365		Spike for hub

63.85 ⁴²¹⁴ shore NW SE.

61.99	
+ 11.14	
<hr/> 73.13	flag 2nd ± w. of shore

E & W $\frac{1}{4}$ line

73.13 flag .002 W of hub
73.128 4902.5 hub

79.498

fall 1.3' S of Center of
square granite monument
in soft ground. One
of crew helped set them
(4' long). This stone
leans S.N. .35' in 1.10'
i.e. 1.3' in 4'

∴ 79.498 5246.9

line OK with W $\frac{1}{4}$
(nothing near for Gings)

∴ $\frac{5247}{4902} = 345'$

W SW $\frac{1}{4}$

Southerly on random course from
W $\frac{1}{4}$ (Pick opening in Pole line)

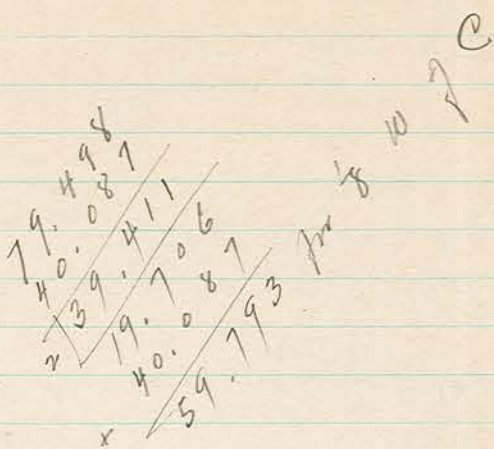
\angle E to S $91^{\circ}06'$ ($182^{\circ}12'$)
0.0 W. $\frac{1}{4}$ (1.3' S of Mon.)
— to swamp
— RR SE.

19.70 fence E & W
20.05 Φ lane E & W
20.43 fence "

40.041 to ~~Iron Bolt in~~ Φ
 $\frac{26+27}{}$ Concrete $\frac{W}{64}$
.106 ch. E of bolt from
Bolt is .153 ch W of
joint.

" $\frac{.106}{.00264} = \text{Tang } 0^{\circ}09'$
fell E.

\angle at W $\frac{1}{4}$ E to S = $91^{\circ}15'$



SE 1/4

Jan'y 27th '39 Fair. 0°

Trial offset line to check fence for alignment.

Correct sta 4.27 (P. 2) and
Produce true 1/4 line .25 ch E of 1/4

Thence S by to convenient target.
= W to S 89 = 40' (179 = 21) (269 = 01)

Align 10⁴ spikes in field @

Ch.		
5.	fence hrs W	.25 1/2
10.	" " "	.257
15.		.238
20.		.245
25.		.242
30.		.242

31 1/2 ± shore - no stumps
40.00 ope in ice.

(Stunted pine in fence line has been hacked - B/T ?) 8

65964

Solar obs. at 5 ch S
 give course of 1 rod offset
 line as S 0 07 1/2' W
 S 0 19 1/2' W
 S 0 11 1/2' W
 38
 S 0 13' W

This should serve
 pending Polaris observation.

89 13
 40
 89° 53' W for
 1/4 line
 S

Meas. # 9 & 10

July 27th PM
 Meas Wly along edge of travelled way
 on Water St.

0.0 line of fence S
 + ± # new sewer N. in
 California St.

4.78 line of fence N
 13.56 " " "
 14.66 " " "

19.95 ± # lane S.
 26.60 R and reflect right
 0°-40' to
 coincide with line
 of south edge #64
 paving W of river.
 39.287 intersect our offset #
 + 25 @ 40.53 ch.
 39.537^{2609.4} our fence line.

40.00 Temp. spike 9

± Sec 9 Meas. only

Jan'y 28th '39 AM.
Overcast +25°
Hall + 4 (different) WPA men

Line up S. edge #6^t with our meas.
on river.

Chain Ely along S. edge concrete
0.0 opposite 60ft (SW x 9)

39.88 ^{2632'} line of fence S.

(39.934) calc. random from N.

41.95² to base of flag
41.964 ^{2769.6} flag for Δ

Continue river meas. W to 55.00
Thence W by 90° triangulation
— base 5,000 ch."

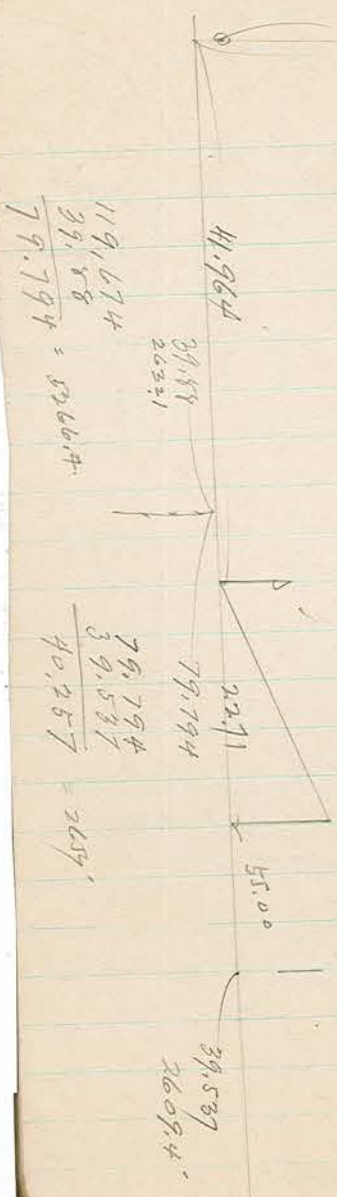
$\angle 77 = 35^\circ V (155^\circ 10')$

= 22.71 to flag

55.00
 22.71
 41.964
 119.674
 119.715
 Total Rec.
 1041 short.

363.09
 1498.9
 2769.6
 7898.5
 1898.5
 P.R. west =
 39.911
 39.537
 .374
 103 paces line

40.04
40.19 ±



Lat + Dep from C E-S-W
 Indicates N + S 1/4 line to be
 S 0°-27 1/2 W
 S 89° 53 W
 S 89°-25.5 W to S
 ?

Jan'y 30th
 AM

Return from Rhineland

Call on Div. Hwy Office in Rhineland
 no information re $\nabla 64$

Call on Mr. Schlei at Grandfatherdam
 verbal info ~~only~~ only

N + S 1/4 line

Jan'y 30th '39 PM +20°

Sky from C

On offset $\frac{5}{10}$ W (.0076 ch) on
 account of 8" elm near road:

W to S $89^{\circ} 25 \frac{1}{2}$ $\frac{3}{268} 14$
 $89^{\circ} 24-40$
 ?

0.0 C

— \pm road
 " " 660'

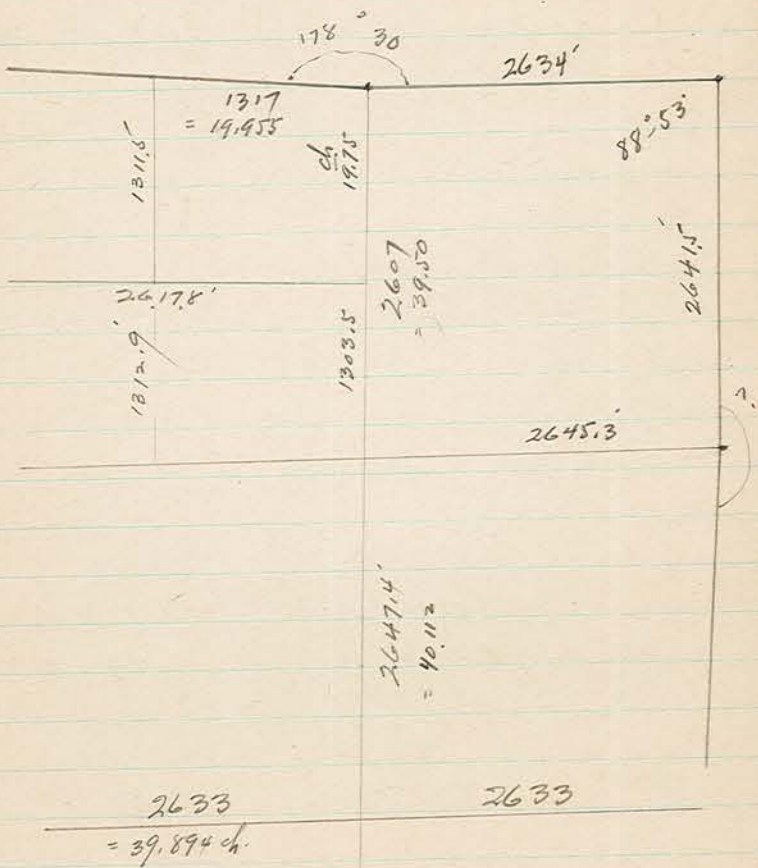
10.00
 20.07 fall .022 ch E of
 1/8 stake found

20.18 hub
 24.491 " 1616.3'

3 Solar obs. at point 7 or 8
 ch. S. of C

$0^{\circ} 16.5$
 21.5
 16
 Ave S $0^{\circ} 18' W$?

from Geo. Posey
field book



N + S $\frac{1}{4}$ line - resumed

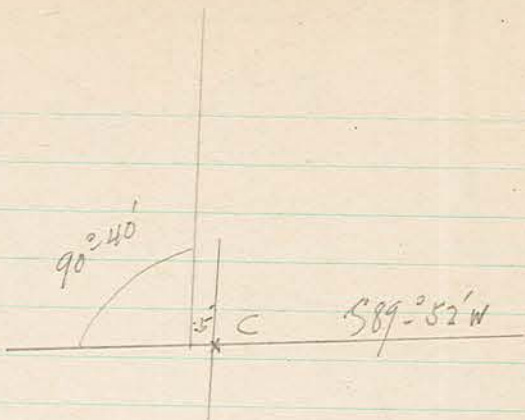
Jan'y 31st '39 Fair 70°
@ 24.49 S }
 " left }
 7°19' to flag
 7°17' " staff (base)

@ 24.49 Thence \angle at 0°59' (1°58')
2.85 ch. Hub: Thence
 \angle left 1°01.5' (2°03')
To our sta 39.88 (P. 10)

"South" 24.49
S 0°59' W
2.85 = 2.85 S & .049 W

S 0°2.5' E
13.02 = 13.02 S & $\frac{.0009}{.04}$ E

\therefore Offset line falls .04 E.
Random " .048 E
40.36 ± $\frac{\quad}{\quad}$
.00119 = 0°04.1' (14)



89 52
90 40

32

$\frac{2}{39.486}$

19.793

N + S 1/4 line

July 31st PM +15 20°

Nly (N 0° 32' E) from pt. $\frac{5}{10}$ w of C.

W. to N. 90° - 40'

4.291

Hub.

8.27 1/2 546.2

old wire fence

S 54° E + N - W 3rd Th Nly.

11.37 750

enter clearing

12.22 ±

Hub .756 E of fence
= .764

19.743

mid-point

19.891 1312.8

wire fence E-W.

20.00

tally 1.21 E of fence x

28.348

Hub

39.517

Spikes for hub

39.568

± lane from E.

39.486

Final point for $\frac{1}{4}$
placed $\frac{5}{10}$ E.

$\frac{39.474}{19.737}$ ✓

Jan'y 31st

+10° Fahr.

Polaris Observation

⊕ SE $\frac{1}{4}$ (as run, on .25 offset).

⊙ 15 ch. S of E+W $\frac{1}{4}$ line.
⊙ Polaris to line (W to E)

- | | |
|--------------------|------------------------------|
| 1) 7:40 PM (C.S.T) | 1° 07.5' |
| 2) 8:01.5 " " | 1° 16. |
| 3) 8:23 " " | 1° 19' [⊙] inverted |

Give az. of line as follows:

- | | |
|----|--------------------|
| 1) | N 0° - 11.3' E |
| 2) | 13.6' |
| 3) | 11.1 |
| 3) | 36. (N 0° - 12' E) |
- by solar 0 13

Feb. 1st Blizzard -
returned to Merrill
got verbal data from Posey
worked on calc.

E+W 1/4 line

Feb. 2nd 1939 Overcast ♂
Continue Corrected 1/4 line W from E 1/4
v < W to S 89°-40'

E 1/4 W (S 89°-52' W) setting stakes
every 10 rods (beginning 2 rods W of 1/4)
40.089 ♂ Hit post.

< E to N @ C 89°-22 1/2'
178°-44'

Stone level with road and in E E+S
at NE x Sec 9 (found) has drill
hole in top

{ W, face of abutment culvert 238'
S — E 36'
Fence Cor post S — W .641'
42.3'

A at E 1/4

< W to N true lines 90°-20'
180 40 1/2

E NE 1/4 meas. 40.03 ch.

LN Sec 9

Feb. 3^d '39 -10° Fair WINDY
Hall + 3 W P A

A over stone NG x 9
Run S 89°05' W by = Sta W 88°53'
(Posey)

19.956	P.R.
20.076 ¹³²⁵	Fence S.
39.92	fall .014 N of our
	sta. 39.517 (P. 15)
(39.909	Posey's record)

Could find no trace of the post
Posey said he found, nor of
his iron spike.

Decide to split the difference in
his angle and his dist. north
on $\frac{1}{4}$ line.

∴ Set tempy spike $\frac{1}{4}$ S
 $\frac{5}{10}$ E of
our sta 39.517 N.

← N

North 1/4 S.

(5) 0° 70.5" / { NE peak of rock S 19° E .38^{25.1}
Spike on S face
Hi line pole N 55° E .327^{21.6}
" " W. face
Maple 3" N 26° W .61^{40.25}

1/4 cor W (N 89° - 25' W) by = 1° 30' ^{nt}

1317'
19.955

set spike in ice
using Geo. Possey's dist.
and angle.

This line continued W misses
Northernmost point of park by
3 rods.

Feb 3rd 1939 PM

Since old fence for $\frac{1}{4}$ SE $\frac{1}{4}$ is straight and has been carefully maintained for years according to local information; and since it aligns with $\frac{1}{4}$ E and NE $\frac{1}{4}$ I decide to hold to it.

\therefore Project fence line stakes S(0-12')
from $\frac{1}{4}$ - at 10 rod intervals

Reach 22 $\frac{1}{2}$ ch + quit (very brushy)

Scale various distances from Public Service blue prints re 4 acre tract, triangular, adjoining Alexander Dam.

31. = 2046
 16.5
 2062.5

9/29/37 N 53 18 W 101.55

1939
 1852
 87

⊕ SE 1/4

Feb 4th '39 AM
 Continue fence stakes on ⊕

25.

27.5

30.0 = $\frac{2062.5}{}$

31.25 drive sq. head iron bolt for
 MC. D .27 N of shore.

Notch in W. Pine 12" defective
 much blazed
 N 16° 21' E 13.60' 206

(May be Orig B.T.)
 could hardly have been 8"
 tree 87 yrs ago!

W. Pine 7" 306°-43' 101.55
 N 53°-18' W 1.539
 " 7 N 9°-03' W 1.147
 75.70'

Shore to 257°
 SE shelter house (under const.)
 to 282°-40' 3 1/4 ch
 (paced) = 215' ±

SE 1/4

Feb. 6th 1939 20° Overcast
Checks meas. N from 40. spike on
1 rod offset line.
8.76 pt. opposite our bolt.
(8.67 US Record.)
10.014 to our 30. ch. spikes

Measure record dist from 12th Pmc
and dig for any existing
evidence of old post or west pt
Find none.

This tree evidently was hacked +
blazed facing the MC but
could scarcely have been
Orig. B.f.

We take line as run

N+S $\frac{1}{8}$ line NW $\frac{1}{4}$

Feb. 6th '39 PM +35°

Run S 0°-09' W on $\frac{1}{8}$ line in NW $\frac{1}{4}$
from W $\frac{1}{8}$ H as set on ice.

∠ E to S 89°-35'
(Sighting on $\frac{1}{4}$ S.)

8.27 shore
8.402 fall .026² ch = 1.73
E of Poseys spike

Var 1°-15' E + 0°-09' = 1°-24'

10.00 hub offset BS E 8"
15.00 " " E "

To pass Hemlock

19.865 spike for hub (+ offset W to line)

line = 8 $\frac{1}{2}$ ' (13 bk) E. of fence.

✓ 19.895 Hi-line W.

8 $\frac{1}{2}$ ' 20.02 ± fence E + W

26.20 1729 road NW SE

$$\frac{39.79}{19.895}$$

bolt intact.

fixed $33.05^{.10}$ from WP 5"
 " 64.58 " " 22"
 " 63.31

N + S $\frac{1}{8}$ line NW $\frac{1}{4}$

Feb. 7th '39 ϕ Fair
 Continue random (S 0°-09' W)
 27.00 spike for hub
 39.79 fall .0276 ch. W. of
 P.R. corner. ?

Set iron bolt on true E + W $\frac{1}{4}$
 line @ 59.793 (Page 4)

W. Pine 22" $165^{\circ}-05' = S 14^{\circ}-55' E$
 $63.31 \frac{63.40}{.31} = .959$
 W " 5" $246^{\circ}-37' = S 66^{\circ}-37' W$
 $.582 = \frac{33.10}{25.20} \cdot 10$
 Aux- maple 4" $268^{\circ} .088$ 5.8
 " 3" $31^{\circ}-35' .132$ 8.7

(d) T.A.
 J. 2:28:40

$$39.79 \frac{.0276}{.00069} = \text{Tang. } 0^{\circ}-02.3'$$

fall W.

R at intersection of lines as run
 = W to N $90^{\circ}-17'$
 $180^{\circ}-34'$

$$89^{\circ}-52' + 90^{\circ}-17' - 180^{\circ} = N 0^{\circ}-09' E$$

Center NW 4

Drive Iron Pin in SW x field for $\frac{1}{16}$ S
(.014 ch E of sta 19.895)

J.A. { + on N face Hi-line pole bus.
269.54 (S 89° 54' W) .31 20.5
e) { Sugar Maple 6'
150° 01' (S 30° E) .281 18.55

(Since $\frac{1}{16}$ comes in line of poles W.
I work from on spike 19.865
or on 3lk offset N.)

Considering line, as run, to be
S 0° 09' W I turn -
N to E 90° 04' + run E+W
(N 89° 47' W + S 89° 47' E) on
3lk (2') offset N.

Feb 7th PM - different crew
S 89° 47' E from (3lk N of) $\frac{1}{16}$

19.852

+ 19.86

fall .03 N of $\frac{1}{8}$ ✓

NW 1/4 (Reserved Tract)

N 89° - 47' W from $\frac{1}{4}$ (on 3rd blk of sect N)

$\frac{.144}{1.68} \begin{matrix} 9.5 \\ \pm \\ 111 \end{matrix}$ fence & road
12.12 = 800' drive spike

(flowage bus w 615 ch. only)

By error I ran S (0° - 09' W)
parallel to $\frac{1}{8}$ instead of $\frac{1}{4}$ line

\therefore correction of $\begin{matrix} 0 & 32 \\ 0 & 09 \\ 0 & -23 \end{matrix}$

To W. will have to be made.

@ .03 Drive Iron bolt
for NE reservation
Z { Maple 2" N 20 $\frac{3}{4}$ E .123 ^{8.1}
" 2" N 27 $\frac{1}{2}$ W .199 ^{13.13}

See page _____

⊕ Reserved tract.

S 0°-09' W.

0.0 tollt.

.262 (17.3) N face pole line

3.00 hub (1.02) W

7.00 (462) tumpy point in
⊕ road NW + SE

11.68 (770.9) spike at shore (1.078) W

Very cold + windy!

At C enter Sec. Reference:

Sugar 8" "84°-40E

.326 = 21.52

T.A.

Hem. 10" "15°-25E

.358 = 23.63

V 2°-15E

Maple 2" "78½°E .115 = 7.6

" 3 "48°-50W .12 = 7.9

Brush line (N) wider + line in
fence stakes 5/10 E of line as NW

⊕ Lot 4 (SE NW)

At C Turn \angle True lines N to E
 $89^{\circ} 20'$
 $- (89 \quad 52)$
 $= N \quad 0^{\circ} 32' E$ for $\frac{1}{4}$ line

Feb 8th PM

Drive iron bolt for $\odot \frac{1}{8} N \odot$
.148 S of wire fence =
19.743 (Page 15) + $\frac{5}{10} E$ of
initial line.

\odot T.A. } Elm 6" $224^{\circ} 30'$ (S $44^{\circ} 30'$ W)
1.777 ch = 117.3'
" 5" $263^{\circ} 24'$ (S $83^{\circ} 24'$ W)
1.16 ch = 76.6'

Aux

x on fence post

N - W .166 = 10.96

do N - E .295 = 19.47

\angle Stow @ $\frac{1}{8}$ $89^{\circ} 46 \frac{1}{2}'$ ✓
179 $33 \frac{1}{2}$

Lot 5

N (0°09'E) on true line
 from 1/16 S in NW 1/4
 setting stakes each 2 1/2 ch.

^{755.7}
 11.45 ch. Drive Iron Bolt
 for MC

f
 T.A

W. Pine stp 30° 141'
 = (539°E)

.06 = 3.97

W. Birch 6" (330°)

= N30W .025 = 1.65

Posey's spike N42 1/2 W .047 3.1

Jones to west .25 1/2 = 16.8

11.887 To our 8ch spike =

19.887

39.774

— means ^{1st} 39.79

Fence required
490 rods.

Monuments

Fall 1939

State has provided 8 concrete monuments 5" square by 36" long with WCA bronze cap set in top.

Sept. 28th 1939 Rainy to fair
12 M until 2:30 with (WPA)
Welch, Steiniger + Utecht

(E 1/4 S) Reference stone monument
(6) then dig up and replace with WCA mon - set level with ground. (On line of new fence W to S.)

North corner of base for East post of Entrance

S 44° W 26.95

E cor. base of West post entrance

S 74° W 35.0

Pocket
Compass
no
var

(5)

North $\frac{1}{4}$ Set 8x10" x 30" stone level
with surface and in agreement
with my reference points (Page 19)
— This is the stone we removed
at E $\frac{1}{4}$. —

Balance of day alone pacing
out onto trails with pocket compass.
(Avg. width 20').

Sept. 29th '39 overcast - cool.

7:00 AM to 2:30 Same party
Set WCD mon. at C (center sec).

c) flush with ground

Marked:

C $\frac{1}{4}$
S. 9
1939

(a)

Set WCD mon at $\frac{1}{8}$ N of Center
flush with ground
Marked

c
NW $\frac{1}{16}$ S9
c
1939

e) Set WCD mon at center NW $\frac{1}{4}$
level with ground surface
Marked:

NW $\frac{1}{16}$ S9
1939

f) MC on W. $\frac{1}{2}$ line (4th Park)
Set similar WCD mon
Marked:

MC
W
S9
W
1939

d) Set WCD mon at $\frac{1}{8}$ W of center
in place of our iron pin
Marked:

W $\frac{1}{16}$
c S9 c
1939

Find slightly
different meas. to trees we marked
in Feb.

{ W.P. 5" S66°37'W 33.10 ✓
" 22" S14°55'E 63.30

g) Set WCD mon at MC $\frac{1}{2}$ Lt 1
flush with surface.
Marked:

S9 S10
MC
1939

The Y.P. N53°18'W meas 101.55

A large spike (Posey's?) has W. " "
until 5 PM pace out roads
alone.

Sat. Sept. 30th
 8 to 1:00
 pacing out roads.

Monday Oct 2nd '39 Fair 50°
 Same party. 7:30 2:30

Prepare 3 galvanized pipes 1 1/2" x 36
 by splitting and spreading
 (lower) end.

Continue Wg (N 89° 47' W) from our
 pin 800' " from center NW 1/4.

o.o Substitute anchored pipe for
 our 800' pin

3 true Azimuth { Burr Oak 5" N 80° 35' W 31.5'
 W. Pine 6" S 0 35' E 39.6'

⊕ 247' ⊕ road NW SE
 279.8 drive iron bolt for line
 430. Set anchored pipe.

x) 0' var. { W. Pine 3" N 8 W 17.7
 High water mark
 west 4.

Run S 0° 26' 1/2" W. from 3
 (parallel to N+S 1/4 line)

188.3 Hub (offset Backsight at this
 Sta. E. 100')

479' ⊕ road SE
 509 ⊕ rock wall 2' W of E end to
 514.7 drive Iron Pin for line.
 set Transit 1' E here +
 continue on 100' offset

546.1 15" W. Pine on true line.

690.8 Set anchored I.P. " "
 { WP. 15 N 0° 26' E 144.7 true
 " 18" S 55 E (19) 83.2

Balance of Oct 2nd
Pace out remainder of roads.
total 4.36 miles

Sunday Oct 8th 2 hrs.
Additional data on roads & show.

Area of Park
as plotted & calculated = 263A

- Reserved dam site 4
net 259
A

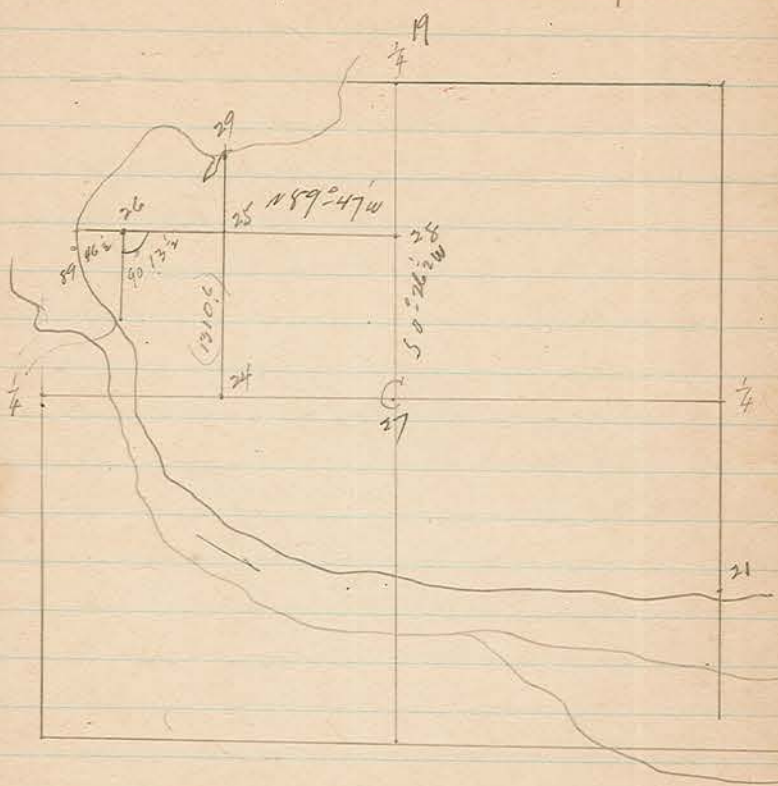
The foregoing is a copy
made by myself, of all
field data pertaining to
my work in Council Grounds
State Forest (Alexander Park)

Dec. 8th 1939

Ray H. Hall

Index
 Sec. 9-31-6 E

S 89° 47' E
 S 0° 26' W
 90° 13'



8 mor

359 60
 89 47
 7 10 13

RECEIVED BY LINCOLN COUNTY
 SURVEYOR THIS 14TH DAY
 OF March 20 22
Tony Dobb
 COUNTY SURVEYOR