

3-8

LINES

FIELD BOOK

401

### 34-8 Lines\_b

	<i>29</i>	<i>30</i>	<i>11</i>		
<i>28</i>	6	<i>31</i>	5	<i>9</i>	4
				<i>1</i>	3
				<i>17</i>	2
				<i>22</i>	1
	<i>33</i>	<i>34</i>	<i>5</i>	<i>15</i>	<i>16</i>
<i>25</i>	7	<i>35</i>	8	<i>5</i>	9
				<i>2</i>	10
				<i>13</i>	11
				<i>20</i>	12
		<i>23</i>	<i>4</i>	<i>12</i>	<i>18</i>
					<i>19</i>
	18	<i>36</i>	17	16	15
					14
					13
	19	20	21	22	23
					24
	30	29	28	27	26
					25
	31	32	33	34	35
					36



SAT 72 MISS

31	32	33	34	35	36
6	5	4	3	2	1
7	8	9	10	11	12
18	17	16	15	14	13



BET 3-4

SEPT 1

(WEST) OFF TAN AHEAD

TURNED RT 45' OFF  
RANDOM LINE BET SB, 34  
STA 156 + 28.0 TO 100 (N-S)

7:30 EAST TO E  
HIGHWAY "B" 25'  
1650 TOP OF HIGH HILL  
2400 END 4 1/2 HRS  
TOO HOT

SEPT 6

2695 CREEK 4' WIDE  
FLOWS WEST  
2794 ENTER SWAMP  
3113 LEAVE SWAMP  
3515 TOP OF HIGH HILL  
4795 ENTER SWAMP SE-NW  
(CEDAR)

5324.0 TURNED LT. OFF BACK  
TAN TO SEC COR 90° 10'  
153.2

5324.0 TURNED RT OFF TAN  
AHEAD TO FOLLOW  
SEC LINE MORE CLOSELY  
ALSO - GO TO  
1° 45'

BET 9-10

2

WITNESSES CLEAR OLD  
BLAZE LINE

1132 LEAVE SWAMP  
1300 END DAY

SEPT 8 BET 9-10

1530 ON HILL

3455 ROAD  
3921 LAKE (PERCH)  
4431 ACROSS LAKE  
5183.1 TURNED LEFT TO  
1320 SEC COR OFF BACK  
386° TAN 88° 00'  
163.5'

FOUND TWO POSTS -  
ONE AGREEING WITH  
OLD BLAZED LINE  
[OLDER THAN THE  
STAKES], ACCEPTED  
AS BEST EVIDENCE  
88° 00'

NO PROOF OFF STUMP  
BEING A B.T.  
BLAZE LINE OLD AND STRAIGHT  
TO WAIST OTHER STAKE SET





37  
32

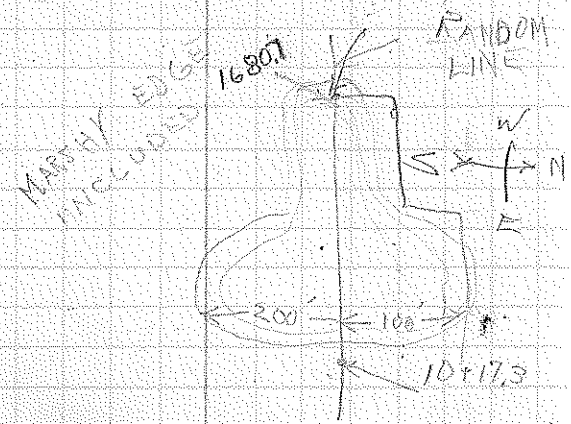
OFF SET TO GET DIS  
ACROSS LAKE



RANDOM

5183.1 TURNED 90°  
ON RANDOM BET  
9-10 8 HRS

SEPT 13  
1017.5 POND SWAMP  
1755 ACROSS POND BY  
OFF SETS



5332 ENTER SWAMP

5376.5 TURNED LT (NORM) OFF  
BACK TAN TO SEC.  
COR. POST 97°15'  
39' B.T. to it

10 1/2 HRS

SEPT 14

5536.5 TURNED NORTH

BET 8-9

0100 (IN SWAMP)

4100 POND

636 ACROSS POND

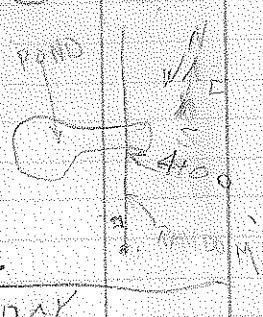
BY OFFSET

763 LEAVE SWAMP

1310 ENTER "

1600 LEAVE "

3587.6 END 8 HR DAY



3520 ENTER SWAMP

$$\begin{array}{r} 70.05 \\ 1.05 \\ \hline 71.10 \end{array}$$

SEPT 15

OFF 5324.0 TURNED TO

WEST 88° 15' OFF

RANDOM LINE BET 43

BET 4-9

IN SWAMP

584 LEAVE SWAMP

763 LARGE BOULDER 35'

ACROSS 25' NORTH OF

RANDOM

1000 END DAY 2 HR RAIN



LEFT 10

1900 ENTER SWAMP N-S

3500 LEAVE SWAMP NE-SW

3044 ENTER SWAMP N-S

3193 CREEK 2' FLOWS

NORTH

3700 CREEK 3' FLOWS

4700 HIGH LAND ON NORTH

SIDE - SWAMP ON SOUTH

SIDE

SET POST AT INTER-  
SECTION OF OLD BLAZE  
LINES (OTHER EVIDENCE  
MISSING)

5397.3 TURNED LT OFF BLK

TAN  $84^{\circ} 51'$  100.6(138 EAST INTERSECT) TO POST  $84^{\circ} 51'$ 

10 MRS

4-5

SEP 17 NORTH BET 89

3729 CREEK 1' WIDE

FLOWS (N W)

5068 SWAMP

5199 CREEK 3' WIDE

5268 LEAVE SWAMP

9 HRS

5189.1 INTERSECT E-W AT

5378.5

SEPT 18

8952 CEDAR SWAMP

9631 LEAVE

8 HRS

10345 ENTER SWAMP

10988 LEAVE

1054684 END OF RANDOM



SEPT 20

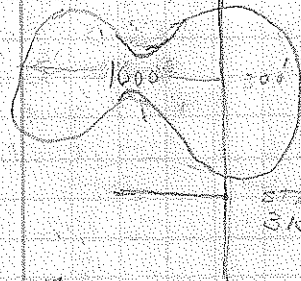
TURNED 87°45' TO THE WEST  
BET 33-4

- 338 ENTER SWAMP
- 1113 LEAVE "
- 2970 TAN. TO RR. CURVE
- 2636.9 TURNED RT OFF  
BACK TAN. (SOUTH)  
TO OLD CHARRED  
CEDAR 1/4 POST 73° 00'  
43.9
- 4160 CREEK'S FLOWS NORTH
- 3855 ENTER SWAMP
- 2388 LEAVE "
- 4806 ENTER "
- 5113 LEAVE "
- 5750 1/2 OF OLD ROAD
- 5229.1 INTERSECT N-S LINE  
AT 105+66.0  
9/16 HRS

SEPT 21

EAST BET 10-15

- 370 LAKE - HIGH WATER MARK
- 315.6 OFF SET
- NORTH
- 1439.9
- TURNED
- TO HUB
- ACROSS
- LAKE
- 75° 30'
- 847.2 SHORE OF LAKE
- 847.2 HUB ACROSS
- 1133 TO AN OLD 1/2 POST
- " NORTH OF LINE 12.5
- 1153 ANOTHER OLD 1/2 POST
- " NORTH OF LINE 17.0



11

13

50 20  
31  
51 00

SE 1549.0 OFF SET NORTH  
 182.5  
 X TO HUB ACROSS  
 83° 49'  
 1050 LAKE WEST SHORE  
 33 272.0 HUB ON EAST SHORE  
 111 2770 LAKE EAST SHORE  
 24 3504 E HIGHWAY "B"  
 26 3504 ROAD RUNS EAST  
 FROM "B" NORTH  
 47'

5148.7 TURNED TO INTERSECTION  
 OF ROADS NORTH  
 56.4 90° 00'

4  
 3  
 2  
 4 0100 CORNER - (INTERSECTION)  
 OF ROADS (4)  
 5 1300 END 10 HR

SEPT 28  
 2300 TOP HIGH HILL  
 2605.8 TURNED 57° 7' OFF  
 FORD. TAN. (NEAST)  
 TO 1/4 POST 28.4  
 3265 ENTER SWAMP  
 3739 LEAVE  
 3500 TWO SMALL LAKES  
 EAST ABOUT 1000 - 2300

OFF BACK TAN 144

55.66.9 TURNED LT EAST  
 TO SEC COR POST  
 91° 20' OFF BACK  
 TAN 42.1'  
 (POST 42.1' EAST  
 AND 1.1' NORTH OF  
 RANDOM BET 2-11  
 (ORIGINAL))



SEPT 22

EAST BET 10-3

0400 = 53434.0

TURNED 90° OFF (RANDOM)  
SOUTH

IN SWAMP CEDAR

308 LEAVE SWAMP N-S

1254 HIGHWAY "B" NW-SE

1580 ENTER SWAMP

1930 CREEK 1' WIDE FLOWS NORTH

2439 LEAVE SWAMP N-S

2455.4 TURNED LT OFF BACK

TAN TO OLD POST

19° 5' 16.6

3200 END DAY 8 HRS

3278 ENTER SWAMP

3600 LAKE 1000' ACROSS (APPROX)

~~3627~~ 25' SOUTH

3637 LEAVE SWAMP

3830 ENTER  
OMMITTED LEAVE "

4850 ENTER SWAMP

5159.1 INTERSECT UN-S LINE

AT 5172.4

SEPT 23

TURNED EAST 90° TO  
BET 2-11

5266.9 = 00+00 BET (10-11)

536 CREEK 1' WIDE NORTH

853 LEAVE SWAMP

1065 ENTER "

2059 LEAVE "

3230 E FIRE LANE SE-NW

3500 END 8 HRS

SEPT 25 TH 19

4208.4 SET FLAG FOR  
TRIANGULATION  
LAKE

4767 LAKE ABOUT 4' LOW

5239.5 HUB ACROSS

5233 LAKE

5239.5 OFF SET SOUTH FROM  
HUB ON EAST SHORE255.5 TURNED  
76° 04'

SEPT 27 MONDAY

NORTH BET 2-3

1140 LEAVE SWAMP. E-W

2336 ENTER "

2569 LEAVE "

3800 SWAMP 3-400 ACROSS

EAST ABOUT 25'

FIRE LANE SSE

3670 ENTER SWAMP

3875 &amp; ROAD E-W

3956 LEAVE SWAMP NNE-SSW

~~395~~ E-W

50873 TURNED RT OFF

FORWARD TAN  $35^{\circ} 59'$ 

85.0

10 HRS.

SEPT 28

11-14

EAST BET 11-14

BEGIN AT COR  $90^{\circ}$  OFF

RANDOM BET (10-11)

2884.4 TURNED LT SOUTH

OFF BACK TAN  $6^{\circ} 10'$ 

128.1' TO IRON

STAKE AT END OF

ROAD IDENTIFIED AS

THE CORNER BY RESIDENTS

5335.2 TURNED LT OFF

BACKTAN. TO SEC

COR POST SOUTH.

OLD RT AND STAKE

 $95^{\circ} 04'$  131.4'



EAST BET 12-13

TURNED 10° TO THE SOUTH  
OFF RANDOM BET 1149

1197 ENTER SWAMP N-S

1730 CREEK 6' FLOWS NE

2510 LEAVE SWAMP

2528.1 TURNED RT (SE) TO

IDENTIFIED ORIGINAL

1/4 COR. ST. PRESENT

45° 00' 137.7'

END 10 HRS

SEPT 29 BET 12-13

3478 ENTER SWAMP SW-NE

3600 LAKE 95' SOUTH

LIES N-S 300'-500'

3830 LEAVE SWAMP N-S

3945 FIRE LANE SE-NW

4627 CREEK FLOWS SE 5'

4961 TURNED RT OFF FORD

TAN 10° 31' - 283.3

TO PILE WITH BRASS

CAP PROPERLY MARKED

PINE 30" N47E 28.4

NORTH BET 11-12

90° OFF RANDOM BET

11-14

1750 OPEN SWAMP

CIRCULAR - THROUGH

THE CENTER

3070 LEAVE OPEN SWAMP

3056 FIRE LANE SE-NW

3300

END DAY

10 HRS

SEPT 30

PEPPIN ABSENT (SICK)

3345 ENTER SWAMP NW-SE

3590 LEAVE

4438 ENTER SWAMP

4820 LEAVE SWAMP

5371.5 INTERSECT EW LINE

AT 53428.2

BET 1-12

EAST ON SAME  
BACK TAN.

5758 ENTER SWAMP N-S

~~LEAVE~~  
7000 END 8 HRS

OCT 11

7470 LEAVE SWAMP ESE

8208 ENTER SWAMP N-S

8436 LEAVE " N-S

7515 ENTER " SE-N

ONLY 50' SOUTH OF  
RANDOM TO LEAVE SWAMP

7980 LEAVE SWAMP

10539.3 TURNED LT OFF BACK  
TAN.  $122.6'$  -  $119.39'$   
TO SEC COR ESTABLISHED  
AUG 1936 MARKED4" IRON PIPE  
10" ABOVE GROUND  
CEMENT FILLED

NO WITNESSES

MOUND  
WITH STONE  
BRASS CAP,  
SETS AT INTERIOR OF  
A HORSE SHOE RIDGE  
OPEN END TO THE NORTH

SEPT 30 FRIDAY

NORTH BET 1-2

6755 ENTER SWAMP

7553 LEAVE "

8015 ENTER "

8357 LEAVE "

9052 ENTER SWAMP

10278 CREEK

10459.4 TURNED LT OFF

BACK TAN TO

STONE COR TO

C 11 35, 36, 2, 1

80° 27' 16.1



23

OCT 22  
WEST 8-17

655 SWAMP NORTH OF LINE  
HIGH LAND SOUTH OF LINE

1555 LEAVE SWAMP

2638.4 TURNED RT. OFF  
FORWARD TAN. 29.5'  
99° 45'

TO OLD STAKE BURNED  
OFF BY FIRE ANOTHER  
OLD POST WAS SET TO  
IDENTIFY IT ONLY EVIDENCE  
AVAILABLE

4390 CREEK  $\swarrow$  FLOWS  
NORTH

5200 END 9 HRS

SAT OCT 23

4890 ENTER SWAMP NW-SE

5170 LEAVE NW-SE

59691 SET A FLAG SOUTH  
250.2 FOR TRANSPORTATION  
ACROSS LAKE

6016 TO LAKE

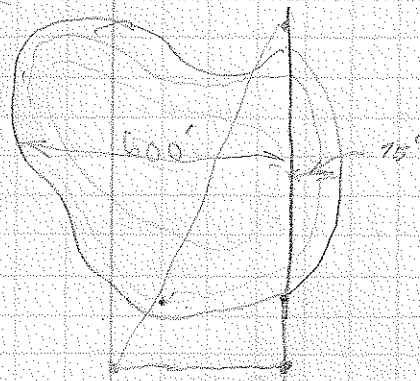
24

7044.5

554.4

7598.9

46.0



6588 TO WEST SHORE

ON HUB ACROSS LAKE  
TURNED 30°

6532.0 STATION OF HUB ACROSS

6975.1 SWAMP

7050 POND

7014 ACROSS POND BY OFFSHORE

7930 LEAVE SWAMP



10000 END 9 HRS

OCT 25 MON.

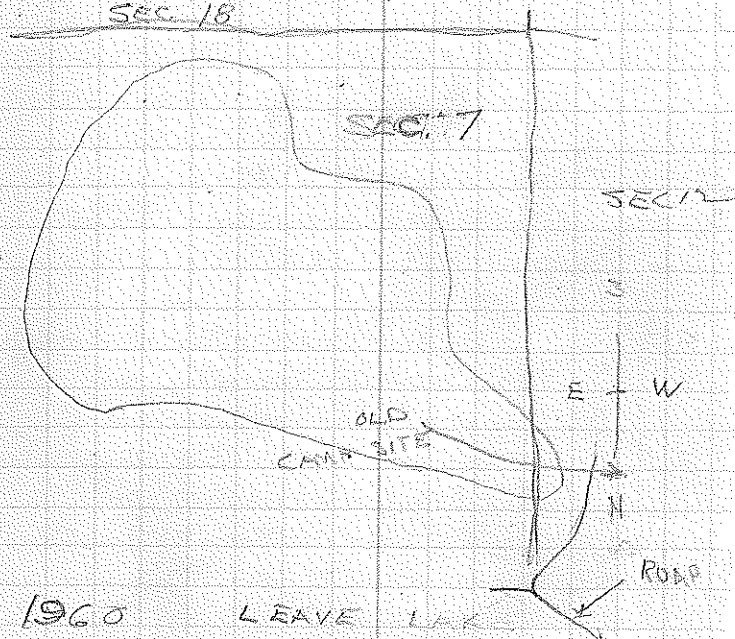
9600 30' NORTH TO EDGE  
 OFF LARGE LAKE  
 10325 ENTER SWAMP (NW-SE)  
 10540 LEAVE " (OLD) NUMBERED BY  
 ORIGINAL SURVEY  
 107+70.8 TURNED RT OFF  
 BACK TAN (SE)  
 TO OLD STAKE  
 BURNED OFF.  
 STAKE SET TWO YEARS  
 AGO FOR LOGGING  
 OPERATIONS SLIGHTLY  
 IN ERROR ACCEPTED  
 OLD BURNED STAKE  
 48° 30' 40.8

107+76.8 TURNED APPROX 90°  
 NORTH BET  
 (13-7)

500 ENTER SWAMP (EDGE LAKE  
 LAKE (EAST EDGE) ABOUT 500' ACROSS  
 640 LEAVE LAKE  
 780 LEAVE LAKE  
 1068 LEAVE SWAMP BOARDING  
 LAKE



1030 LAKE - SAME AS  
 NOTED ON RANDOM  
 BET 18-7 AT STA 9600  
 SEC. 18



1960 LEAVE LAKE  
 20153.2 TURNED LT OFF  
 BACK TAN TO  
 PROBABLE MC  
 (NOT TO BE USED) 16° 30'  
 91.7'

2307 OLD CAMP ROAD BR  
 NW-SE.



36 + 38.0 TURNED LT OFF  
BACK TAN TO  
ORIGINAL  $\frac{1}{4}$  COR.  
94° 43' 36.0'

TUE OCT 26

3640 ENTER SWAMP AT NARROW  
NECK WHICH FORMS THE  
STEM OF AN APPLE SHAPED  
SWAMP

3884 LEAVE SWAMP

3885 ENTER "

4556 LEAVE "

4735 CREEK COMING FROM  
A SSW DIRECTION THEN  
NORTH ALONG RANDOM  
LINE TO STA. 5015  
FROM WHERE IT FLOWS  
N.W.

52 48.5 TURNED LT (EAST) OFF  
BACK TAN TO OLD  
POST (CHARRS) CHARRS  
STUMPS CORRESPOND TO  
ORIGINAL B.T. - DISTANCE  
APPROX. CORRECT 21.8  
99° 24'

CONTINUED NORTH

BET 1-6 NORTH

STA 52.48.5 = 0 + 10  
1000 END 9 HRS.

WED OCT 27 FOGGY

3960 ENTER SWAMP BRS WEST

~~370~~ 4125 LEAVE " " "

4900 ENTER SAME SWAMP  
BRS WEST

4663 CREEK TAN TO CREEK

4824 SAME CREEK

4835 LEAVE " N-W

~~4940~~ 4940 LEAVE SWAMP

51 61.0 TURNED LT OFF TAN

TO TOWN AND RANGE  
CORNER 102° 41' (N.E.)

63.2

OLD BLAZES AND  
STAKE.

EAST BET 6-31  
 APPROX 90° OFF N-S  
 RANDOM  
 37+94.1 TURNED RT (NW)  
 OFF BACK TAN  
 16.6' 76° 30'  
 END 9 HRS

THURSDAY OCT 28

3865 E CREEK 9' FLOWS S.W.  
 SAME CREEK AS CROSSED  
 BET 6-12

4858 TAN. TO (SAME) CREEK

5055 E ACROSS (SAME) CREEK'S COMING  
 FROM THE S.E. FLOWING  
 WEST TO POINT OF  
 TANGENCY THENCE N.W.

5445 E ROAD BR. (NNW)  
 5980 ENTER SWAMP SMALL  
 POT HOLE

6335 LEAVE SWAMP  
 7394 BOULDER 7' x 6' +  
 4' ABOVE GROUND  
 SOUTH OF RANDOM LINE  
 6'

7915 E CREEK FLOWS  
 WNW

8039 FENCE UNDER CONSTRUCTION  
 OFF OF LINE  
 TOO FAR WEST AND  
 TOO FAR SOUTH

8084.4 TURNED LT OFF (S.W.)  
 BACK TAN. 111° 30'  
 8.7' ORIGINAL  
 BT. DISTANCE AND  
 STREAM VARY THE  
 STAKE

8090 SAME STREAM FLOWING  
 FROM THE NORTH

9060 END 8 HRS

OCT 29 FRIDAY

9409 CREEK 1' WIDE  
 FLOWING NNW

10082 ENTER SWAMP N-S



10744.5 TURNED RT OFF  
 BACK TAN (NORTH)  
 88° 48' 8.1'  
 TO VERY OLD STAKE  
 ROTTED OFF ORIGINAL  
 BT. TO VERIFY IT  
 10730.8 INTERSECT N-S  
 LINE AT 10466.3

BET 5-6  
 (SOUTH)

TURNED APPROX 90°  
 TO SOUTH OF STA  
 5429.0 = 0100

1310 ENTER SWAMP  
 2465 CREEK FLOWS WEST  
 2483 LEAVE CREEK  
 2500 LEAVE MEADOW  
 2531.7  $\frac{1}{4}$  SEC POST WEST  
 0.9' VERY OLD  
 FENCE LINES TO IT

END 8 HR DAY

MONDAY  
 NOV. 1.

3435

~~3055~~

3655

4767

5178

5243.7

POINT OF  
 ENTER SWAMP WHICH  
 LIES EAST OF RANDOM  
 LINE

LEAVE POINT IN SWAMP  
 ROAD NE SW  
 COMES OUT AT SEC  
 CORN  
 5-6-31-32

SHRS

ENTER SWAMP

TURNED LT OFF  
 FORWARD TAN

101° 37' 47.3'

TO OLD POST  
 ORIGINAL BT IDENTIFIES  
 IT AS TRUE CORNER

TUE NOV 2 EAST BET

6-7

3000 SMALL LAKE 1000'  
SOUTH OF LINE  
APPROX AT CORNER  
THE 4 408

LARGE LAKE AT  
CENTER OF SEC. 6

3440 ENTER SWAMP  
BRS SE

3530 & CREEK 4' FLOWS NORTH  
FROM SE

3588 LEAVE SWAMP

4675 ENTER SAME SWAMP

4585 LEAVE "

4930 ENTER "

5439 E. OF ROAD THROUGH  
SWAMP

5436.7 TURNED RT OFF BACK  
TAN (N.E.) TO SEC  
FOR OLD POST (AND

ORIGINAL FOR OLD  
POST RT.  
191° 43' 56.5

WED NOV 3 EAST BET

5-8

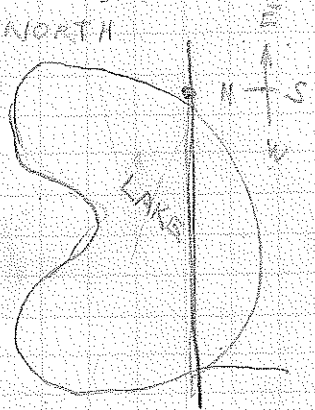
STA 5436.7 - 0100

165 LEAVE SWAMP  
1141 CREEK 4' WIDE  
FLOWS NORTH

17+17.8  
OFF SET 189.2

SOUTH FOR  
TRIANGULATION

78° 58' TO  
HUB ACROSS  
FROM OFF SET



1780 MARSH  
1868 LAKE  
2695 LEAVE LAKE  
STA OF HUB ACROSS =

5689.6 TORNE RT OFF BACK TAN  
89° 22' 6.3

TO OLD POST CORRECT  
IN ALL RESPECTS  
ORIGINAL BT TO VERIFY  
IT.



SOUTH BET 7-8

STA 5293.7 # 0400

EXTENDED SAME RANDOM LINE

0140

LEAVE SWAMP

800

ENTER "

2000

END 9 HR DAY

THUR NOV. 4

CONTINUING SOUTH

2146

ENTER EAST EDGE OF  
SWAMP

2697

LEAVE SWAMP

2655.4

TURNED RT (NE) OFF  
BACK TAN TO OLD  
STAKE STUMPS ARE LIKE  
OLD BTs STAKE AND  
STUMPS CHECKED.  
56° 31' 40.1  
STAKE IS AT SE POINT  
IN SWAMP

4150

SMALL POND ABOUT 300'  
-500' N-S ABOUT 250'  
WEST OF RANDOM LINE

5291.1

INTERSECT EAST  
WEST RANDOM AT  
STA 5346.6

6200

END DAY

FRI NOV 5

7065 CREEK 2' FLOWS WEST

7896

OLD SLEIGH ROAD

BRS NE-SOUTH

GOOD ROAD FOR

FIRE PROTECTION IS  
IMPROVED

9150

OLD CAMP

9253

ENTER SWAMP (BRS WEST)

9526

LEAVE SWAMP

10604.8

TURNED AT RIGHT  
X EAST TO INTER-  
SECT OLD N-S BLAZE  
LINE. 53.4'  
EVIDENCE OF CORNER  
GONE.





WEST

4.77 SW P SL DI

5.00 TAY WAMP

17  
4

PURCH 8 S85E 48

" 8 S 84W 27

" 8 N 1W 6

ALLM. 9 N41E 30

06

9

559



