

FIELD BOOK

401

Harding 33-5

² (23)	² (24)	² (22)	³ (21)	⁴ (20)	⁴ (19)	⁵ (18)	⁵ (16)	⁶ (17)	⁶ (15)	⁷ (14)	⁷ (13)	⁸
6	5	4	3	2	1							
7	8	9	10	11	12							
18	17	16	15	14	13							
19	20	21	22	23	24							
30	29	28	27	26	25							
31	32	33	³¹ 34	35	36							
			³²									

TOWN OF HARDING

BET SEC 31-6
EAST

0.0 TURNED ^{8.1}33° 11' LT
OFF BACKTAN 832 ^{14'} TO ^{4'} SEC
CORS 1, 6, 31, 36 AS
WITNESSED BY ORIGINAL
BT

875 ENTER SWAMP
1076 LEAVE "
3235 ENTER SPRICE SWAMP
3562.3 TURNED RT OFF
FORD TAN 39° 20' 33.5
TO ORIGINAL COR.

4130 CREEK FLOWS SOUTH
4225 LEAVE SWAMP
5197.1 END RANDOM

EAST BET

5-32

CONTINUING RANDOM

BET 0-31 STA 5197.1

= 6.5

45

ROAD

3343.3 HUB

4605 ENTER SWAMP

5321.0 TURNED RT OFF

BACK TRN TO

POST AT INTER

SECTION OFF OLD

BLAZE LINES (NE)

(E-W) 91° 00'

69.7'

EAST BET 4-33

TURNED NORTH 10° 30'

OFF STA 5321.0 BET

5-32

4825 CREEK FLOWS SW

4900 LEAVE SWAMP

5280.2 END RANDOM

EAST 3-34

BEGIN AT SPI 53802
ON RANDOM BET 4-33

128 FIRE LANE NW-SE

306 CREEK C'N WIDE

444 LEAVE CREEK

FLOWS NORTH

825 ENTER SWAMP

5302.4 END RANDOM

EAST BET 535

BEG

360 LEAVE SWAMP

5555.2 TURNED RT OFF

BACK TAN $99^{\circ} 19'$

84.5' TO POST

5555.3 TURNED RANDOM

30' TO NORTH

5555.3 = 0.000

1100 ENTER SWAMP NWS

1875 LEAVE SWAMP NWS

2626.5 END RANDOM

AND TURNED RT OFF

BACK TAN NE

TO OLD CHURCH STAKE

BLAZE LINE TO IT

 $101^{\circ} 45'$ 65.0'

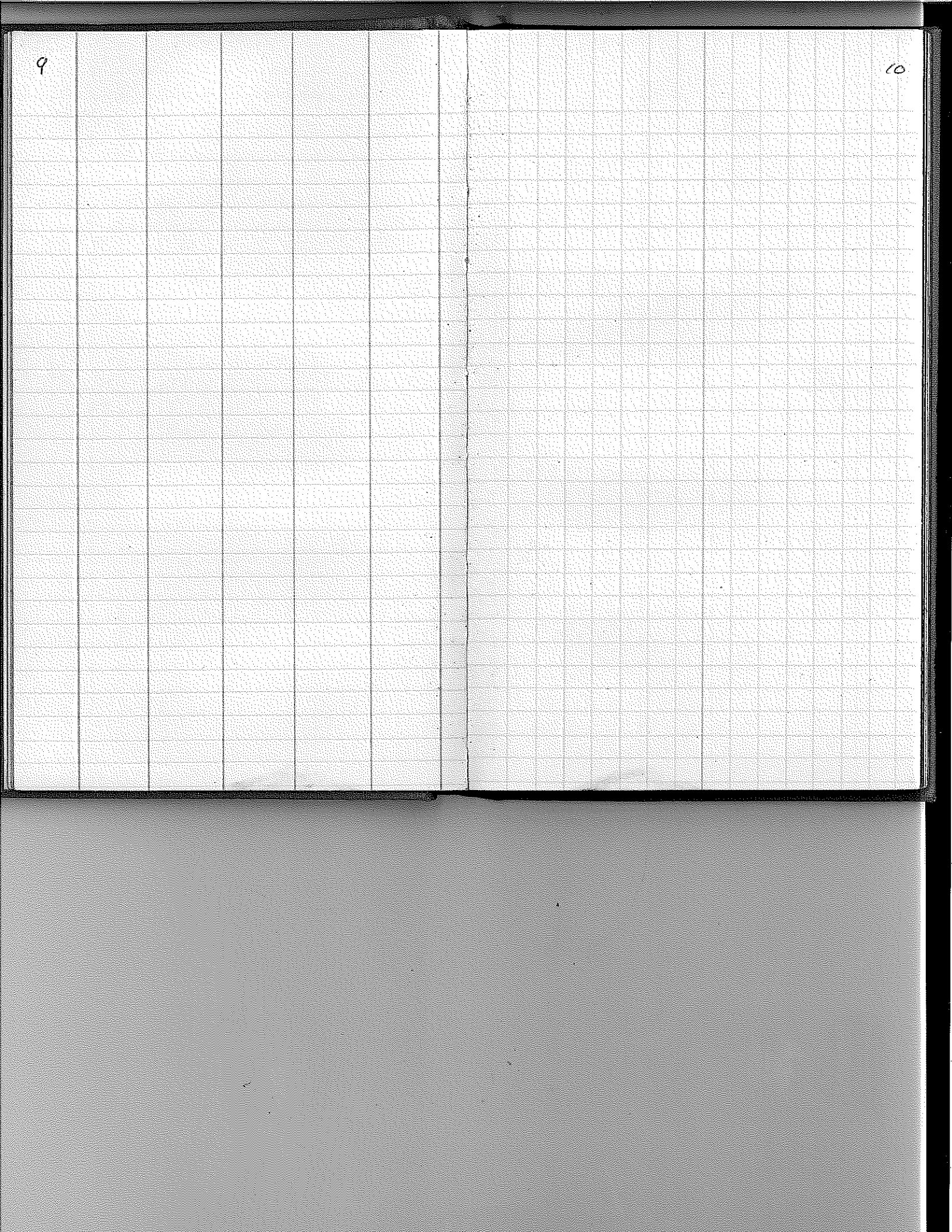
EAST BET 1-30
 BEGIN AT STA 2606.5
 ON RANDOM BET 1-35

1360 FIRE LANE NNE
 SSW
 2140 ENTER SWAMP
 2757 LEAVE " "
 3856.5 TURNED RT NW
 OFF BACK TAN. 10
 1/2 POST 13° 52'
 306.1'
 4380 ENTER SWAMP
 5304.5 TURNED RT OFF
 BACK TAN. 84° 00'
 21.8'

IN SWAMP 8

SOUTH BET 1-36
 5308.5 0400 DIST
 (1-36)

1155 LEAVE SWAMP
 5425 ENTER SWAMP
 3850 CREEK 10' FLOW E
 3040 LEAVE SWAMP
 5276.5 TURNED RT OFF
 BACK TAN. 84° 17'
 184.0 TO INCORRECT
 POST.



The image shows an open notebook with two blank pages. The pages are white with light blue horizontal ruling. The notebook has a dark cover visible around the edges. The pages are numbered 11 and 12 in the top corners. The pages are otherwise empty of any text or markings.

X

SET SEC CORN
 1, 4, 31, 36 AS EVID-
 ENCED BY OLD STAKE
 AND BLAZE LINE
 UPON DIGGING UNEAR-
 THED OTHER OLD
 STAKES BRACKED STONE
 WITH STAKES

SPRUCE 4" S 70 W 33.6

1/4 SET 1-36 14

Y

LOCATION POSTER
 WEST OF 1/4 1585

AS EVIDENCED BY
 OLD STAKE BLAZE
 LINE TO IT - IN
 SWAMP - NO DISTINCT EDGE
 MOUNDED WITH STONE

CEDAR STUB 22"
 S 89° E 36.6

X

SET SEC CORNS
1, 2, 35, 36
AS EVIDENCED
BY OLD CHIPPED
STAKE AND PLAZE
LINES

MOUND HIGH WITH
SAND AND STONE

MAPLE 9" S 69° W 301

X SEC SEC CORNS
3, 3, 34, 35
NORTH OF STA
89/36 - 80, 66

UPON DIGGING-UN-
COVERED OLD STAKE
- VERY OLD

IN OPEN SWAMP
570" EAST TO
LEAVE SWAMP

MOUND WITH STONE

SET ~~4~~ BET
35-2

AS EVIDENCED BY
STAKE

MAPLE
14 N 78 E 86'

MAPLE 14
S 40 W. 120.8'

35' WEST OF OLD
LOGGING ROAD

BOULDER 5' x 7'
N 55 W 33' TO CENTER

X
SET ~~4~~ BET

39. IN SOFT
MUCK NORTH OF
RANDOM 77.9' AT
STA 2611.2

WILL ALWAYS BE
HARD TO FIND
BECAUSE OF SWAMP
GRASS (LAND
VALUELESS)

GREEN SPRUCE

S 43 W 70.5

X
 SET SEC CORN
 33, 32, 4, 3

NORTH OFF RANDOM
 AT STA 5361.68-76118
 AT OLD ABANDONED
 ROAD

SET A LOCATION POST
 EAST

SET ~~X~~ CORN
 RET 33-4 NORTH
 OFF RANDOM 75.44
 AT STA 5631.74

MOUNDING WITH STONE

CEDAR STUMP 8 S36°W 32.5
 " " 7" N81°W 29.4

~~SET 4~~ BET

32-5 NORTH OFF
RANDOM AT STA
3676.4 428

PINE STUMP 29" N
N 23° W 28.8

MOUNDIED WITH STUM

AT NW EDGE OFF
WET SPOT

~~SET 5~~ SEC. CORS

5, 6, 31, 32

NORTH OFF RANDOM AT
STA 30.6 NORTH 15.9
IN DITCH LINE OFF
ROAD DITCH OF OLD
RR. WEST 10'

PINE STUMP 20"
N 71° E 44.3'

LOCATION POST WEST
15'

~~SET COR TO~~

~~33-34 R4 R5~~

1, 6, 31, 36

AS WITNESSED BY OLD
BLAZE LINES AND
BT.

MOUNDED WITH
STONE NOTHING
TO WITNESS

~~1/4 CEDAR POST~~
~~BET 31-6 T33N~~
R5E T34N R5E
AS EVIDENCED BY
OLD ORIGINAL BT
TAMARAC S E
BLAZE LINE JOINT
IN SOFT SWAMP
NOT A LOGICAL PLACE
FOR A STONE

CEDAR POST 8" RT.
OFF FORD JAN
52.5 29 20 XT
5TR 25 62.3

27

28

29

21° 30'

35.75

124.7

2697.3

51.4

2675.9

53.9

2653.0

1326.0

53.9

1349.7

129.7

7.4

129.7

9.9

134.1

67.5

2481.5

68

2549.5

1274.8

84.3

74.8

9.5

68.1

3701.0

77.3

2623.7

1311.9

1311.9

30

SOUTH THROUGH
SW 1/4 OF 34
40' NORTH TO SWAMP
AT STAKE TIMBER NORTH
ON HILL

BEGIN AT STAKE

EDGE OF SWAMP

630 SWAMP WEST

775 LEAVE SWAMP BR SW

1205 E RR

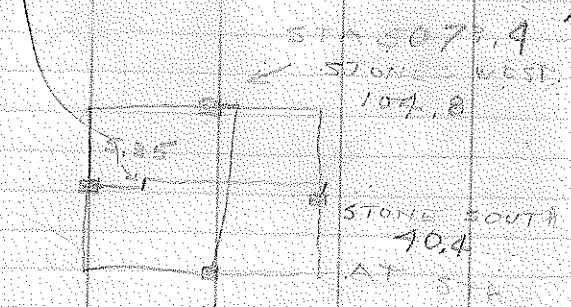
1090 E ROAD

2481.5 TURNED RT OFF

FORD TAN 3° 27'

68.2 TO 1/8 STAKE

SEC 34



96385	37	
<u>42</u>	42.0	
193570	57	
385140	108	
4043770	113	
		5303.8
		<u>11.39</u>
		15293.5
150734		
25367		3646.2
259		1813.1
		105.2
		<u>5.35</u>
		199.85
		49.92
		<u>535</u>
		582.7

CENTER SEC =
 SOUTH OFF STA 3646.7
 105.2 WEST OFF
 STA 2536.7 - 53.3

NORTH OF 1/4 BET 31-3
 1/4 N-S LINE = 1267.4
 3615'

(EW 1/4 LINE) - BEGIN
 36 SOUTH OF POST
 69 LEAVE SWAMP
 610 E ROAD WNW-SE
 900 10' SOUTH SLICE
 ROAD
 1375 SAME ROAD ENE-WSW
 1493 RR TRACKS ENE WSW
 1858 ENTER SWAMP
 2363 POND
 2635 LEAVE POND
 2701.0 TURNED LT. OFF
 BACK TAN 370 48'
 97.8 TO 1/4 POST
 3909 LEAVE SWAMP

SUB DIVIDE T 35 N
R 8 E SEC 57 - 34

NORTH THROUGH 34

250 OPEN SWAMP
620 LEAVE "
735 ROAD E-W
1175 SPRUCE SWAMP
2335 LEAVE "
2345 RR
5073.4 TURNED 90° RT OFF
BECKTAN TO $\frac{1}{4}$ POST
104.8

EAST TROUGH 34

30 SWAMP
85 LEAVE "
350 ASH SWAMP
670 LEAVE "
1190.3 OFF SET NORTH
5.35

1350 ENTER CEDAR SWAMP
2254 LEAVE "
2862 OPEN MARSH
3165 LEAVE "
3530 OPEN MARSH
3710 LEAVE "
4335 ENTER SP. SWAMP

4490 LEAVE
4970 TAN. SWAMP
5303.8 TURNED LT. OFF BAS.
TAN 74° 50 42.0

NORTH - 37

1025 ASH SWAMP
1568 CREEK 2' FLOWS WE
1775 LEAVE ASP SWAMP
2175 SWAMP
2373 CREEK
2478 CREEK
3575 LEAVE LOW GROUND
3690 OPEN SWAMP
4042 LEAVE "
5326 TURNED LT. OFF
ROAD, TAN 50° 27'
50.0

EAST - 37

625 ASH SWAMP
800 LEAVE "
1430 SWAMPY (ASH)
2200 CREEK 2' FLOWS NW
2830 LEAVE SWAMPY)
3140 LOW-WET
5077 CREEK 2' FLOWS N.

35

5269.3 TO A POINT
1.1' SOUTH
OF A STONE

