

SECTION
LINES

TOWN OF ROCKFALLS

TOWN OF ROCK FALLS
(T33-6)(T32-6)

106	105	104	88	97	90
6	64	5	89	4	103
83	85	86	92	91	73
7	65	8	102	9	97
84	107	58	96	62	61
18	66	17	95	16	78
82	77	76	68	48	1
19	67	20	52	21	69
89	63	43	58	57	78
30	54	29	42	28	44
41	40	47	46	45	56
31	50	32	39	33	51
11	10	9	8	7	6

100	6	36	5	38	4	12
38	33	37				

101	7	35	8	32	9	13
30	31	29				

21	18	27	17	24	16	14
23	22	25				
20	19	26	20	28	21	15
18	17	16				

T33 R6E

JUNE 1, 1940 ①

EAST BET

R. F. FUCHS

13-24 BEGINNING ED. KAUFMAN

○ AT ROAD

GEORGE VAUGHAN

INTERSECTION

ELMER NICKLAUS

LAWRENCE GUERIN

LESLIE VAUGHAN

000 CORNER

VAR 2° 00' NE

1770 SWAMP N-S

1860 LEAVE

○ 55.28 ENTER

49.80 LEAVE

5010.7 E RR TRACK NE-SW

5219.1 TURNED RT SW OFF FORD TAN

TO CORNER FENCE LINE

78.9' 20° 32' (COR STONE

0.9' NORTH)

②

13-10
NORTH BET VAR 30°

000 = CORNER (TUNE 0.8' NORTH)

34E & RR

1339 & ROAD E-W

5302.3 HUB TURNED OFF FORD TAN RT

N.E. 34° 15' 15.0'

2674.9

2674.7 1/4 COR STONE

WEST 6.8'

③

SOUTH BET 19-24 VAR 3°

000 CORNER (0.9 NORTH)

440 ENTER SWAMP

585 LEAVE "

2681.7 HUB

2682.8 STONE WEST 15.9'

2681.7 OFF SET WEST 59.4'

3855 SWAMP

3970 LEAVE

4970 ENTER SWAMP

LEAVE " OFF FORD TAN 11.6'

5284.8 TURNED LT SE 79° 18' TO

STONE COR 16.6'

④

SOUTH BET 25-30

000 = 5284.8 BET 19-24

170 ENTER SWAMP

3/4 LEAVE "

1744.6

OFF BACK TAN

2619.6 TURNED RT NE TO $\frac{1}{4}$ AS

IDENTIFIED BY ROAD AND

FENCE $85^{\circ} 27'$ 197.3'SET ON $\frac{1}{4}$ SHOT HUB TURNED SOUTHVAR $1030'$ TURNED $85^{\circ} 27'$ SOUTH

500 ENTER SWAMP

1230 LEAVE "

2683.9 TURNED RT NE OFF BACK

TAN $58^{\circ} 23'$ 185.4' TO

STONE IN MARSH

VAR $5^{\circ} 30'$

⑤

SOUTH BET 31-36

000 BEGIN AT STONE

285 LEAVE SWAMP

2000 ENTER SWAMP

2400

LEAVE "

"

TURNED RT SW OFF FORD TAN $49^{\circ} 55'$

2578.9 OFF FORD TAN 105.9

TO STONE $\frac{1}{4}$

000 START AT STONE - SAME

VARIATION

200 CREEK $4'$ WIDE FLOWS WEST

687.8 OFF SET WEST 44.9

1778.7 " " " 64.7

2658.8 TURNED RT NE, $73^{\circ} 11'$

47.5 OFF BACK TAN

~~TO COR 26.3~~

⑥

WEST BET 367 T32-33

VAR 5°

000 TOWN COR. (FENCE ROAD)

758.6
1596.4 OFF SET NORTH 24.5

178.4
900.8 " " " 26.1

FLOWS SOUTH

4331 CREEK 16' WIDE AT BRIDGE

462.0 E RR TRACK.

OFF BACK TAY

5327.4 TURNED RT SE TO

INTERSECTION ROADS AND

COR 13° 04' 26.3"

⑦

WEST BET 2-35

VAR 3° 50'

000 SEC CURS 36-35-2-1

4500 ENTER SWAMP

5140 LEAVE "

5305.5 END RANDOM

WEST BET 3-34 R32-33

600 5305.5 BET 2-35

350 ENTER SWAMP

1000 LEAVE "

2100 ENTER "

2775 LEAVE "

2630 ENTER SWAMP

2828 LEAVE "

5100 SWAMP

5253.7 TURNED RT OFF FORD

TAN TO COR VERY VERY
66D 14.2' N.W. 10' 32' NORTH (37)

WEST BET 4-33

000 5253.7 BET 3-34

115 LEAVE SWAMP

2660.9 " 1/4 SOUTH 2'

3740 ENTER SWAMP

4015 LEAVE "

4690 E CREEK FLOWS N.W

4835 LEAVE CREEK

5281.1 TURNED RT N.W OFF

FORD TAN. 23.7' 27° 18'

TO COR (FENCE - RAILS)

⑩

WEST BET 5-32 T₃₂ T₃₃

000 5281.1 BET 34-3

1300 CREEK FLOWS SOUTH

3770 CREEK

3815 LEAVE CREEK

4378 CREEK K'LOW NW

4386 CROSS CREEK

5313.0 END RANDOM

⑪

WEST BET 6-31

000 5313.0 BET 5-32

3720 CREEK FLOWS SOUTH

3770 LEAVE

3870 POWER LINE

4314 E"CC

4470 WISC RIVER

4361.7 OFF SET SOUTH 152.6'

AND TURNED 70° 40' BET

HUBS ON RANDOM

4770 LEAVE RIVER

4794.9 HVB ACROSS

4850 CEDAR SWAMP

5622.3 TURNED LT SW OFF

FORD TAN. TO ORIG

STONE CUR. 55° 57'

114.8'

4689

915'

314'

12

SOUTH BET -3-4
VAR 1°50

000 COR POST

395 LEAVE SWAMP

1160 ENTER "

1485 LEAVE " SE

55.58.4 TURNED LT OFF FORD.

TAN 56° 51' TO COR. 28.8.

FENCE LINES AND ROAD

65
71
66
75
75
75
75
75
75
75

13

SOUTH BET 9-10

55.58.4 BET 3-4

3501 CREEK 10' WIDE FLOWS EAST

3770 ENTER SWAMP ASH

4090 LEAVE " ASH

4550 CREEK 15' WIDE FLOWS WEST

ENTER SWAMP AT 52.70

5313.0 END RANDOM

14

SOUTH BET 15-16

000 5312.0 BET 10-9

300 LEAVE SWAMP

2605.7 EAST 5' TO COR

(ORIGINAL) REMAINS OFF

OLD STUMPS CORRESPOND
TO IRON PIPE SET ^{AGO} LONG

5237.8 TURNED RT SW OFF

FORD TAN 10.1' 61° 30'

TO STAKE SET FROM

ORIGINAL HEMLOCK ST.

N.E. SCRIBE MARKS VISABLE

ON BUT OF LOG.

15

SOUTH BET 21-22

000 5237.8 BET 15-16

1065 ENTER SWAMP

1545 LEAVE "

1940 ENTER "

2120 LEAVE "

2355 ENTER "

2530 LEAVE "

2870 ENTER EAST EDGE SWAMP

3070 LEAVE " " "

3981 FENCE 101.5' ^{WEST} ~~EAST~~

5069.6 TURNED SW RT OFF

FORD TAN 79° 19' TO

ROAD INTERSECTION 87.6

WEST BET 6971
21-28

000 = INTERSECTION ROADS
1635 ENTER CREEK
1650 LEAVE CREEK

3500 ENTER SWAMP

3655 LEAVE "

5278.7 TURNED ^{S.W.} LT. OFF FORD

5266.2 TAN TO ORIGINAL COR

IDENTIFIED BY OLD PINE BT
HEMLOCK STUMP CORRESPONDS
DISTANCE CORRECT

21° 55' 38.1
8.55

WEST BET 30-29

000 5278.2 BET 21-28

145 ENTER SWAMP

600 LEAVE "

3080 ENTER "

3625 LEAVE "

5095
~~595~~ ENTER "

5260 LEAVE "

5266.2 TURNED LT SW TO COR. ^{OFF FORD TAN}

(FENCE - ROADS) 46° 02'

36.6

18

WEST BET 19-30

000 55662 BET 20-29

2658.7 NEW FENCE COR SOUTH 61'

2825 ENTER SWAMP 377

3035 LEAVE " 266

3145 ENTER " 266

3365 LEAVE

BLACK TOP

3776 6' NORTH TO ROAD INTERSECT

5560 END RANDOM - COR NORTH 9.3'

CONTINUING TO RIV.

000 - 5560.5

1581.7 END OF RANDOM

1663 WISC. RIV.

19

SOUTH BET R5 R6
SEC 25-30

000 SEC. COR STONE

2630.7 1/2 IRON WEST 12.8

3952.1 TURNED LT NW OFF

BACK TAN 57° 46' - 9.6'

(100' SOUTH TO RIV.)

TO 1/2 IRON

NORTH BET 19-24

000 5560.5 BET 19-24
 2656.3 FENCE COR 11.0 WEST
 5313.9 OLD COR POST WEST
 10.8

~~2156.95~~
 5313.9
 9.3
 5304.6
 2652.3 $\frac{1}{2} + 9.3$ (5.4)
 1324.15 + 9.3 (2.7)
 3978.85
 9.3
 3661.6
 1326.15
 1877.5
 1653.4
 8.2

NORTH BET 15-18

000 5313.9 BET 19-24
 1040 E ROAD E-W (TRAIL)
 2340 RIVER
 3083 LEAVE RIVER
 5281.5 END RANDOM

EAST BET 17-20

000 COR - INTERSECTION OF ROADS

1595 ENTER SWAMP

1810 LEAVE "

2668.5 TURNED RT NW OFF 69.6'

BACK TAN 32° 43' 69.6'

1" A TO OLD STAKE ST. TO IT

3730 ENTER SWAMP

3855 LEAVE "

5249 END RANDOM

WEST BET 18-19

000 INTERSECTION ROADS

VAR 1° E

2670 POWER LINE

3930 E 'CC'

50.652

56.652 PIPE CORNER SOUTH 10'

SOUTH BET 16-17
VAR 45'

000 INTERSECTION OF ROADS

120 LEAVE SWAMP

1315 ENTER "

1355 LEAVE "

1550 ENTER "

1700 LEAVE "

2095 ENTER "

2180 LEAVE "

2730 ENTER "

3000 LEAVE "

3419 CREEK FLOWS SE 38' ACROSS

3635 " " ACROSS FLOWS WEST

3813 " " 10' " " EAST

5291.5 END RANDOM

37.83
66
176.58
26.58
197.18 5280
194.2
3338

3.5
66
170
21
330
396
257

EAST BET 16-21

000 = 5974.9 BET 17-20

305 CREEK

3430 " CREEK

365 LEAVE CREEK FLOWS S

1365 ENTER SWAMP

1537 CREEK 15' WIDE SOUTH

1640 LEAVE SWAMP

5320.8 ORIGINAL COR NORTH

180.9' AND WEST 0.3'

5353.9 ORIGINAL COR NORTH

180.9'

26

2871.2 3377.3

NORTH BET 19-20

000 COR IN ROAD PREVIOUSLY SET

5261.7 TURNED LT OFF

FORD TAN, $77^{\circ} 10' 14.2''$

TO COR AT ROAD INTERSECT_{ION}

S. 2 138

27

VAR $0^{\circ} 00'$

NORTH BET 17-18

17-18-1924
000 COR ROAD INTERSECTION

3854.9 OFFSET WEST 27.5

5274.5 TURNED LT HW OFF

FORD TAN $83^{\circ} 00' - 221'$

TO PIPE COR INTERSECTION ROADS

241	241
14	99
<hr/>	
967	
241	5168
3374	5169
	53859

(28)

SOUTH BET 30-21

000 5291.5 BET 16-17

245 ENTER SWAMP
579 & CREEK 4' WIDE
655 LEAVE SWAMP

1095 ENTER SWAMP

1215 LEAVE "

2395 & CREEK FLOWS SE

3070 ENTER MARSH FROM
REVER DAM4005 LEAVE MARSH ENTER
BALSAM SWAMP

4665 LEAVE BALSAM SWAMP

5267.4 TURNED LT OFF BACK
TAN TO ORIG. CORNER

78° 56' 119.1

(29)

EAST BET 9-16
VAR 1° 48' EAST

000 INTERSECTION ROADS

0480 LEAVE SWAMP

635 ENTER SWAMPY VALLEY N-S

705 LEAVE SWAMPY VALLEY N-S

1690 ENTER SWAMP

1855 LEAVE "

3920 ENTER SWAMP

3495 LEAVE "

3905 ENTER "

4025 LEAVE "

4585 ENTER MARSH

4426 3' WIDE CREEK

4665 LEAVE MARSH
5040 ENTER SWAMP

5246.1 END RANDOM

5297.4 INTERSECT N-S RANDOM

AT STA 38.5'

5246.1 TURNED LT OFF FORD

TAN (NE) 78° 35' - 680'
TO STONE COR.

30

WEST 7-18

VAR 50° 00'

000 ROAD INTERSECTION - IRON PIPE

2770 E POWER LINE

4365 SWAMP

4615 E "CC" HIGHWAY

4880 LEAVE SWAMP

50645 HUB

5091 RIVER (EDGE)

5390 LEAVE

5717.9 SEC COR NORTH 71.7

31

EAST BET 8-17

000 IRON PIPE AT INTERSECTION

4785 ENTER SWAMP

5290.1 HUB NORTH OF THE

COR ROAD INTERSECTION

10.7 AND EAST 0.80' TENTHS

NORTH BET 8-9

000 INTERSECTION ROADS

555 LEAVE SWAMP

527.9 END RANDOM

527.36 COR. 34' EAST TO

INTERSECTION OF ROADS

WEST BET 5-8
VAR 40'30"

000 ROAD INTERSECTION

2830 ENTER SWAMP

3285 LEAVE "

53064 COR FENCE AND STUMPS

CORRESPONDING TO GRIG,

NORTH 415

5307.00 END RANDOM

WEST BET 7-6 COR 0.6' EAST

000 5307.00 BET 5-8

26368 TURNED NW RT 2 KM

FORD TAN 82° 20'

67.6' TO VERY OLD

FENCE COR ON GOOD LINE

3865 TOWER LINE N-S

3630 ENTER SWAMP EASILY DRAINED

3910 LEAVE "

3965 4" CC

4075 RIVER

4080 SET FLAG FOR R

4450 LEAVE RIVER ON ICE

5767.9 COR POST NORTH 104.8'

NORTH 7-8 VAR 4° 30'

000 ROAD INTERSECTION - IRON PIPE

1785 ENTER SWAMP LOW LAND

3130 LEAVE " LAND

3985 ENTER LOW LAND

4220 LEAVE " "

5298.1 268.3' WEST OF COR,

3649.05 34.15

1524.56 17.08

51.23

1300.5

5298.1 49.05

1304.5 2612.7

3975.6 36.4

68.5

3973.6 EAST 51.8

2649.1 EAST 34.2

1324.5 EAST 17.1

NORTH BET 5-6
VAR 30' 15"

000	SEC	COR	POST
5686.3			
TURNED RT OFF BACK			
TAN TO "CCC" POST SW			
86° 12' - 45.6'			
END RANDOM			

EAST BET 4-9

000	HUB AT ROAD INTERSECTION
56078	1/4 INTERSECTION OF ROADS
SOUTH 0.9'	
BEGIN OVER	
000	1/4 COR ROAD INTERSECTION
56266	COR IN ROAD SOUTH 7.7

NORTH BET 4-5

000 ROAD INTERSECTION

5606.9 ROAD INTERSECTION

1.5 WEST 0.9

NORTH BET 32-33

VAR 5° 30'

000 ROAD INTERSECTION

648 CREEK 5' WIDE FLOWS WEST
3922.1

3722.5 ORIGINAL COR 0.75 WEST

OF RANDOM

000 = CORNER (1/4

5633.2 SECTION COR WEST

38.6

EAST TUB AT
DEPTH
31.2

136.35
1395.15

40

T33.6

WEST BET 29-32

VAR 2°00

000 ROAD INTERSECTION

3728.5 OFF SET NORTH 35.1

5260.8 COR SOUTH 13.6

1315.2 2.9

2630.4 - 5.8 X N

15340.9

3945.6 5.164



25.1
 13.6
 11.5
 15.75
 5.88

18.5
 29.8
 2.85

35.1
 2.1
 16.4

1532.9
 1315.2
 17.2

41

WEST BET 30-31

1°50'

000 FENCE AND ROAD CORNER

1448.3 OFF SET NORTH 329.9 FOR Δ

1587 RIVER DIVERTED

on offset

448.3 TURNED 73° 20'

2082 LEAVE CHANNEL

3317.8 HUB ACROSS CHANNEL

3871 OLD RIVER BANK

2909.4

3290 LEAVE OLD RIVER

5483.6 STONE SOUTH 80.5

305.9

15.5

46

154.4

76

2.1

42

NORTH, SET 28.39
VAR 2.30

000 INTERSECTION ROAD

270 ENTER SWAMP 2717.1

695 LEAVE " 643.1
3360.8

1140 ENTER "

1280 LEAVE "

13+33.5 OFFSET EAST 21.4

~~5351.8 INTERSECTION CORNERS~~

3.3 WEST

5350.5 EAST 13.8' TO IRON CORN.

1.3

43

EAST SET 21.28

000 ROAD INTERSECTION

17.6 CORNER SOUTH 6.8

1345 FENCE LINE

2295 CREEK 10' FLOWS NORTH

2709.7 2.7 NORTH TO IRON IN ROAD
NOT ON #

42.98.0 OFFSET SOUTH 23.3

5360.1 CORNER SOUTH 12.9

16.8
- 8
17.6

360.1
40.5
40.5
1345
16
16
16
16

44

T33 R6

SOUTH, BET 27-28
VAR 3000'

000 INTERSECTION ROADS

5285.1 END RANDOM

5287.4 COR WEST 10.6

45

WEST BET 26-35
VAR-

000 ROAD INTERSECTION

723 RR TRACK

2693 CREEK & FLOWS SOUTH
25'

4533.7 OFF SET NORTH 28.0'

5281.9 END RANDOM & LUCINE ROAD
89.2
33.7

WEST BET 37-34 20622
VAR 40° 30' 27058
12964

000 52819 BET 36-35
37058 1/2 INTERSECTION ROADS FOR COR.

NORTH 18.9' VAR 50° 45'

000 1/2 INTERSECTION ROADS

270 ENTER SWAMP

780 LEAVE " 22338

3666 END RANDOM

WEST BET 38-33

000 3666 BET 37-34

1.66 ENTER SWAMP

2270 LEAVE "

2319.4 OFF SET SOUTH 44.8

~~4000 FENCE LINE~~

5315.8 END RANDOM INTERSECTION

ROADS 120' SOUTH

See loc station S

18.0 at center

CEDAR 10 S 73E 12 LK

TAM 10 N 19W 50 LK

WEST BET 14-23

74.7

000 ROAD INTERSECTION

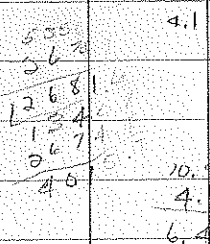
2674.9 1/4 COR SOUTH 10.5'

AT 1/2 ROAD ON FENCE LINE

~~2000 FENCE LINE~~ 56.1

5356.5 COR 1/2 ROADS 4.1' NORTH

AT FENCE LINES



5356.5
 1340.8
 4010.7

TOO LAKE ROAD

NORTH BET 35-36

'000 INTERSECTION ROADS

1310 ENTER SWAMP

2015.4 OFF SET WEST 33.1

2633.0

1/4 EAST 33.5

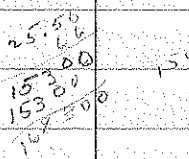
3284 1/2 CREEK 21'

3600 LEAVE SWAMP RR

2615 1/2 TRACK SE NW

5273.7 COR EAST 19.7

1316.5



1320.35
 3633.
 3953.35

5273.7
 2633.0

5640.7

1330.35

19.7
 53.5
 143.2
 81.4

SOUTH BET 31-32
VAR 3'

000 COR. IN ROAD

1920 ENTER SWAMP

2190 LEAVE "

2390 ENTER SWAMP

26437 ORIGINAL COR EAST 88.7

000 1/4 POST VAR 4'

90 LEAVE SWAMP

951 CREEK 4' WIDE Flows SW

1973 E " 10' " Flows WEST

26787 2nd COR 51' STONE WEST 97.1

13373

~~THE 42.5'~~

~~TURNED RT SW OFF~~

~~BACK TAN 57° 43' AT~~

~~55.58.5~~

NORTH BET 33-34

000 STONE SWAMP

40 LEAVE SWAMP

340 ENTER "

756 LEAVE "

1075 ENTER

1105 LEAVE "

1430 ENTER "

1510 LEAVE

36459 TURNED LT NW OFF

FORD TAN 85° 45' 80.4'

2775 E ROAD

3000 ENTER SWAMP

3325 LEAVE "

3530 E ROAD

4785 ENTER SWAMP

4938 LEAVE "

5098.7 TURNED LT NW OFF

FORD TAN TO END

OFF N-S RANDOM BET

27-28 43° 57' 276.7

52

43° NORTH BET 20-31

83°
47.52 VAR 4° 30'

000 IRON HUB & ROAD

25415 MARKED  SET ANOTHER SOUTH

2621 " 29.6' EAST TO STONE

387.9 2 IRON PIPE 26.75

3884.3 98.0' EAST TO OLD POST

4460 ENTER SWAMP

4970 E CREEK 5' WIDE FLOWS WEST

5000 LEAVE SWAMP

5207.5 END RANDOM

53

NORTH BET 34-35

000 STONE

590 ENTER SWAMP NOT USED
1333.9 1/16 COR. WEST 58.9 NORTH 2.5

1480 LEAVE SWAMP

1500 ENTER "

1845 LEAVE "

2580 ENTER ASH SWAMP

2641.9 1/4 IRON WEST 106.6'

AND NORTH 6'

3657 LEAVE ASH SWAMP 26.8

5256.7 END RANDOM 5

5283.5 CORNER STONE WEST 26.8

171.3

(54)

VAR N3°E

NORTH BET 29-30

600 = COR IN ROAD

1/4 2680.9 - ORIGINAL

EAST 18.6'

000 = ~~5609~~ 1/4 CORNER VAR 4' 00"

5130 E "CC"

2535.4 FLAG FOR Δ

5544 RIVER

26626 INTERSECT E.W. LINE

3475 LEAVE RIVER

4147 E CREEK FLOWS EAST

47476 HVB E

53442 1/4 EAST 33.6'

(55)

NORTH BET 25-26

000 INTERSECTION OF ROADS

3807 CREEK 20' WIDE FLOWS E;

4310 E RR TRACK

5320.5 (045) COR EAST 1/4

56

EAST BET 25-36

000 COR ROADS

5310 ENTER SWAMP

5392.4 COR 217 SOUTH

1.35

62

91

5378.4 5392.4 1349.6 1349.6

4036.3 4048.8 2699.2 2699.2

13621 1349.6 5392.4 4048.8

13 36.3

12.5

1/4 WIT SW 6" N75W 46.3'

MOUNDEN WITH STONE

57

WEST BET 33-26

VAR 5°00'

000 TEMPORARY COR ENTER

SWAMP

1390 LEAVE SWAMP

1425 ENTER "

2745 LOGGING ROAD N1W3E

3290 " " N1W3E

3710 LEAVE SWAMP

3815 ENTER SWAMP

4200 LEAVE " 40

4350 ENTER "

4900 LEAVE "

5315.4

5318.2 END RANDOM

(58)

WEST BET 22-57

000 5315.4 BET 23-20

100 ENTER SWAMP

351 LEAVE "

625 ENTER "

1060 LEAVE "

1560 ASH SWAMP

1850 LEAVE ASH SWAMP

3910 ALDERS

3785 CREEK 2' FLOW SOUTH

3810 LEAVE ALDERS

5437.5 END RANDOM 182.2 NORTH
TO COR.

(59)

NORTH BET 23-54

000 TEMP. COR. FENCE ROAD
VAR 5° 30'

2544.1 1/4 ON FENCE LINE

1/2 ROAD TURNED * 3' 20"

000 = 2544.8

2646.2 = COR.

2

(60)

THIS IS PAGE 61 IN COPYING

NORTH BET 13-14

000 COR

56.75 ENTER SWAMP

3050 LEAVE "

5293.5 INTERSECTION ROADS

EAST 1.7

1323.4

2646.7

(61)

WEST BET 12-13

VAR 3°20'

000 COR

6295.5 COR 6.2 SOUTH

(62)

WEST BEY 71-14

VAR 2°-00'

ROAD INTERSECTION

51684 END OF RANDOM LINE

(63)

WEST 30-39

107.5

000 COR A

5105.4

4810 & "CC"

568.0
518

5149.8 TO TEMP MC NORTH

167.5 COR. 109.9' IN

RIVER

SET MC

SPRUCE 23" S 40 E 53.0

TAM 8" N 49 E 42.5

(64)

361

BET 5-6

SOUTH FROM $\frac{1}{4}$ BET

E6

000 = Post ($\frac{1}{4}$)

3357 = CREEK 6' FLOWS EAST

3643.2 END RANDOM

316

NORTH FROM $\frac{1}{4}$ - SWAMP

ALL THE WAY

000 = Post ($\frac{1}{4}$)

2601.6 END RANDOM

2643.9 ORIGINAL 6.05 EAST

(65)

26
3
198

364
6787

SOUTH BET 7-8

000 = 2643.2 BET 5-6

3067 E CREEK FLOWS EAST
1' WIDE

5584.7 END RANDOM

SOUTH BET 17-18

000 = 5284.1

~~5280.1~~
518.4 SEC COR WEST 3.2
5280.1 END RANDOM

SOUTH BET 19-20

000 5280.1

12524.4 1/4 3.8 WEST
3018.6 END RANDOM

3019.0 HUB 7.7 WEST

→ 1213.3 1/6 WEST 3.5

20.50

9080

~~66~~
1368

2503

1368

17.75

15048

21.22

WEST BET 22-15

000 CORNER VAR 4°45'

2673.6 1/4 COR. 00'

5357.5 COR (ORIG.) 56.8' NORTH

5354.1

5351.5

2672.6

2678.9

1839.45

5 = 516.5

13 39.45

40 181.04

54.9

2.05

39.85

55
60

51 NORTH BET 21-22

000 COR IN ROADS

2647.3 1/4 COR IN ROADS

5384.5 ORIG. COR WEST 0 2'

NORTH BET 14-15

000 = CORNER

3570 ENTER SWAMP

3642 LOGGING ROAD

3664 LEAVE SWAMP

4257 ENTER "

4532 LEAVE "

4868 ENTER SWAMP

5076 LEAVE SWAMP

5320 END RANDOM

53296 HUB FOR CORNER EAST 111.3

38

22

228

228

250.8

NORTH BET 7-12

000 COR

4215.4 @ RR TRACK

4538 ENTER CREEK ALDERS

4656 @ CREEK NW

4700 LEAVE ALDERS

5145 ALDERS

5290 CREEK FLOWS NE

5300 END RANDOM ORIG. COR

EAST 13.5

NORTH BET 11-12

000 COR

3310 ENTER SWAMP

5090 LEAVE "

5299.5 END RANDOM

2664.7

13.5

2678.2

1339.1

13.5

1350.6

WEST BET 1-12

000

~~COR~~ HUB - 12-7 ^{BET}

474 RR (E)

5664.7 1/4 ORIG SOUTH 8.3'

885 ENTER SWAMP

1635 LEAVE "

2890 ENTER "

3050 LEAVE "

3445 ENTER "

3870 LEAVE "

4159 ENTER "

4477 LEAVE "

5297.3 END RANDOM

5300.3 COR SOUTH 5.3'

NORTH BET 1-2

000 5279.5

125 ENTER SWAMP

~~E.W. LINE BET~~

5347.3 STAKE WEST 6.9'

NORTH BET 1-6

000 1.9' EAST OF STONE

1515 LEAVE SWAMP

3060 ENTER "

3699 CREEK FLOWS NE

3831 " " NW

5970 LEAVE SWAMP

5102 & PAVEMENT

5293.0 229.2
5279.8 STONE 221.4

76

WEST BET 16-21

000 = COR

2639.8 TURNED PT

NW TO ORIGINAL

COR 86.2' 76° 05'

3925 ENTER SWAMP

4948 OFFSET

5338.1 1674 NORTH END

RANDOM

77

WEST BET 17-20

000 = 5338.1 ON OFFSET

339 12' NORTH (ROUGH)

1463 ± 'CC'

1854 WISC RIVER

2478 LEAVE "

52657 COR N ROAD NORTH 54.0

NORTH BET 15-16

000 CORNER
T.R. 12537 W.D.V.
HEMISSTEADOK

26356 FENCE COR EAST U'

28359 OFF SET EAST 70.3

2870 ± "CL"

31912 HUB TURNED RT NE

6VF FORD TAN TO

ORIGINAL LIVE RT

37.0' 27° 00"

SOUTH FROM ORIG SEC
COR IN SWAMP

240 LEAVE "

1720 RIVER

2188.6 ORIG. M.C. SOUTH
SIDE OF RIVER

EAST 66.4

50 EAST BET 24-25

000 CORNER

3131.3 ± TRACKS

1390 ENTER SWAMP

1737 LEAVE " 5136

4200 ENTER " 1290

4520 LEAVE " 3846

5038 ENTER " 5136

51370 1935 SOUTH TO

STONE 48.4

196.75

193.0

1284.25

2568.5

15137.0

1320

1284.25

36.

3/4 1451

1284.25

2568.5

3852.75

46.10

6.10

2634.7

2668.7

67.3

1322.0

1284.25

37.75

NORTH BET 26-27

000 STONE CORNER

395 ENTER SWAMP

495 LEAVE "

710 ENTER "

835 LEAVE

950 ENTER

1010 LEAVE

1710 ENTER

1690 LEAVE SWAMP

5327.9 END RANDOM

NORTH BET 22-23

000 5327.9 BET 26-27

3709.6 OFF SET EAST 39.6

5206.2 COR 10.8 WEST OF

RANDOM

WEST
~~WEST~~ BET 18-19

000 STONE

400 ENTER SWAMP

1510 LEAVE "

2879 CREEK 2' WIDE FLOWS SE

2987 TAN. TO CREEK

4718 ROAD

5110.6 STONE NORTH 4.5'

WEST BET 6-7

000 SEC STONE

1200 LOW LAND

1850 LEAVE LOW LAND

3100 ROAD SE-NW

5194.5 STONE SOUTH
~~NORTH~~ 70.1'

84

WEST BET 7-18

600 = STONE

110 ENTER MARSH

1270 LEAVE "

1930 ROAD SW

5115.8 STONE NORTH 176

85

EAST BET 5-8

000 STONE

319 CREEK 18' WIDE SOUTH

2075 ENTER MARSH

3470 LEAVE "

4890 ENTER MARSH

51634 END RANDOM

5171.5 POST NORTH 220.05

EAST BET 4-9

000 = POST

480 LEAVE SWAMP

2653.5 COR INTERSECTION

ROADS

600 2653.5

700 ENTER SWAMP

1790 LEAVE "

2661.5 POST SOUTH 72.8 "

WEST BET 2-35

000 = CORNER IN SWAMP

1052 LEAVE SWAMP

5594.8 COR, NORTH 38.6 TO

IRON PIPE & OLD ROAD,

WEST BET 3-34

000 = IRON PIPE

518 & "CC" SSW NNE

1300 ENTER RIVER

3100 LEAVE FLOWAGE

5702.9	
5279.0	STONE NORTH
	11.5
	-7
	8
	3
	5
	5.1

11039.5

13117.0

1159.5

NORTH BET 4-5

000 STAKE FOR COR

2631 & "E" E-W
 26335 COR IN ROAD 38.7' E.
 51490 END RANDOM

51653 COR IN ROAD EAST

1101

WEST 1-36 T 33-34

000 STONE COR

1471 CREEK 15' FLOWS WNW

1773 E RR SSE-NW

1830 SWAMP

3080 LEAVE SWAMP

~~2658.25 IRON NORTH 19~~

2640.10 IRON NORTH 19.0'

3218 ENTER SWAMP

53856 COR STAKE NORTH 43.6'

WEST BET 3-11

000 NORTH OF STONE 0.5'

505 ENTER SWAMP

1325.3 $\frac{1}{4}$ N 75.5'

2650.65 Post NORTH 15.6'

4079 LEAVE SWAMP FOR ISLAND

4596 LEAVE ISLAND IN SWAMP

4396 LEAVE SWAMP FOR ISLAND

4493 LEAVE ISLAND FOR SWAMP

5334.9 ^{31.1} NORTH 60.7' TO OLD STAKE

IN OPEN SWAMP

1325.3	15.6
29.2	5
1	5

WEST BET 3-~~10~~¹⁰

000 STAKE IN SWAMP

1145 LEAVE SWAMP

1338.0 $\frac{1}{4}$ NORTH 7.15

26760 POST NORTH 34.3'

000 $\frac{1}{4}$ POST

758 & "CC"

1120 ENTER RIVER

1405 LEAVE "

2652.7 POST NORTH 13.6

1267

310.3

SOUTH BET 2-3

000 STONE

2651
5303

1685 ENTER SWAMP

1810 LEAVE "

2000 ENTER "

NOT USED

3657.3 STAKE IN SWAMP WEST 11.5

3205 LEAVE SWAMP

3390 ENTER "

3606 LEAVE "

4560 ENTER "

5303.7 POST 37.2' WEST

SOUTH BET 10-11

000 07.8 POST

1329.0 1/2 POST WEST 57.8

3652.6 POST 114.9 WEST $\frac{2665.1}{14.5}$

2678 LEAVE SWAMP

600 1/4 POST IN SWAMP

185 LEAVE SWAMP

2638 E ROAD

2636.6 ^{HOT FOR} STONE WEST 19.2'

NORTH BET 16-17

000 = OFF SET EAST 156.3

AT 5227.5 N-S LINE

1550 ENTER SWAMP

1795 LEAVE "

2412.5 OFF SET EAST 131.1

2624.0 1/4 POST WEST 3.6

000 POST

26 E "CC"

50.3

12.2

186 ENTER RIVER

45.4

641 LEAVE RIVER

3678.8 END RANDOM

3680.4 COR IN ROADS ^{WEST} 47.5

WEST BET 10-15

000 5164.4 ON RANDOM BET.

11-14

~~3026~~
~~3378.2~~ "CC"44
41
1.63379.2 FLAG FOR Δ

3385 ENTER RIVER

3537 LEAVE "

3860.1 3860.1
OFF SET NORTH FOR Δ

75° 36' AND TURNED 150.7

~~5530.8~~
316

5555 ENTER SWAMP

5532.8 ORIGINAL COR NORTH

21.6'

NORTH BET 9-10

000 POST ORIGINAL

330 LEAVE SWAMP

532 ENTER "

1030 LEAVE "

1165 ENTER "

1315 LEAVE "

5187.1 STAKE 58.7 WEST

WEST BET 9-16

000 ORIGINAL CORNER IN
SWAMP

565 LEAVE SWAMP

1114 ENTER "

1530 RIDGE IN SWAMP 60'

1805 LEAVE "

4000 ENTER ALDERS

4210 E CREEK 20 WIDE FLOWS SOUTH

4268 LEAVE ALDERS

5357 E ROAD TOWN

53557 TEMPORARY CORNER

SOUTH 35.3 AT INTERSECTION
OF FENCE AND ROADS

277?

WEST BET 19-30

000 CORNER IN RIVER

LEAVE RIVER

52432 CORNER IN ROAD

CORS NOT YET SET

 $\frac{1}{16}$ E 1265 $\frac{1}{16}$ S 3530 $\frac{1}{16}$ W 3795

R. 5-6 T32

✓

NORTH BET 6-1

000 5399.3 BET 7-12

4430 CREEK 5' FLOWS EAST

4760 CEDAR SWAMP

5170 LEAVE "

5413.7 COR STONE 86.4' WEST

NORTH 13-7

000 5281.5 BET 13-8

505 DRY CREEK E-W

1860 DRY " E-W

4514 CREEK ALONG 1' WIDE

4750 CREEK LEAVE 1' WIDE

5399.3 END RANDOM

45
46.5

71
66

TIE OF LINE BET 7-6

426
4606

4060 ENTER RIVER

4450 LEAVE "

5767.9 POST NORTH 104.8

6657
3942
3907
433.2
30.2

NORTH BET 8-9

000 = 2678.8 OFF SE. W. WEST

30.3

1355.9 OFFSET EAST 30.3

2067 1/2" CREEK 45' WIDE FLOWS EAST

2697.1 OLD STAKE 9.4 EAST

53.955 STONE 66.7 EAST

NORTH BET 3-4

000 COR POST

2651.9 1/4 COR 1/4 ROAD EAST 16.2

SOUTH THROUGH 3-4

000 STONE ON TOWN LINE

2652.4 STONE WEST 6.8

17
16.2
6.8

104

EAST BET 4-33

600 CORNER IN ROAD

ENTER LOW LAND

~~3640~~ POST NORTH 11.5

5750 LEAVE LOW LAND

3480 ENTER SWAMP

3890 LEAVE "

5255.4

5254.7 STONE NORTH 4.6'

105

EAST BET 5-32

000 ORIGINAL COR IN

SWAMP

1100 LEAVE SWAMP

4300 OFFSET SOUTH 28.6

5394.1 COR IN ROAD NORTH

86.3

2651.1 ORIGINAL $\frac{1}{4}$ NORTH 43.8'

EAST BET 6-31 T33-34

000 STONE IN SWAMP

3165 LEAVE SWAMP

5070

5080 ENTER "

35

60

5296.3 ORIGINAL CSR

310

210

23.1

100

100

100

SOUTH 118

100

TIE 115 LINES BET 6-5

2643.9 EAST ^S ~~115~~ ORIGINAL

6105

WEST BET 8-17

000 : TEMPORARY CORNER

SOUTH 35.3 AT 5355.7

BET 9-16 AT $\frac{1}{2}$ OF ROAD

AND FENCE

2870 ENTER SWAMP

2531.6 NOT CORNER ~~CHIPPED STAKE~~ 32.0 SOUTH

2685 LEAVE

5177.1

5177.1 190.0 SOUTH TO STONE

5177

5355.7 SOUTH 35.3

