

A DEPENDENT SURVEY OF PARTS OF  
T35N R8E, T34N R8E, AND  
T34N R7E IN LINCOLN COUNTY WISC.

NOTE: ALL LOCATIONS OF STREAMS,  
LAKES SWAMPS AND ETC. ARE NOT ON  
SECTION LINES BUT ON RANDOM LINES.  
THIS SURVEY WAS MADE ACORDING TO  
U.S. LAND OFFICE RULES OF 1930.

SURVEYED 1937. BY FRANCIS X. FUCHS.  
MERRILL, WISC.

T35N R8E	PAGES	5-60
T34N R8E	"	60-126
T34N R7E		126-134
T32N R7E		150-159
T33N R5E		166- <del>204</del> <sup>209</sup>
T35N R5E		<del>209</del> <sup>209</sup> - 215

ENTERED

6/10/68

BY BILL FONKO

The following Xerox copies are of a Survey conducted by

Francis X. Fuchs Merrill, Wisc in 1937.

The survey included the following areas.

T35N R8E	Pages	5-44
T34N R8E	Pages	60-108
T34N R7E	Pages	126-134
T32N R7E	Pages	150-159
T33N R5E	Pages	166-205
T35N R5E	Pages	209-215

The Xerox copies were made and found complete as of January 26,  
1973.

Asst. Tax Lister

*Patrick R. Priebe*  
Patrick R. Priebe

## ABBREVIATIONS

CL	=	CENTER LINE.
BET.	=	BETWEEN
COR.	=	CORNER
SEC.	=	SECTION
BRS.	=	BEARS
RT.	=	RIGHT
LT.	=	LEFT
∠	=	ANGLE
TAN.	=	TANGENT
RR	=	RAILROAD

BEARINGS TO WITNESS TREES AND OBJECTS  
ARE MAGNETIC WITHOUT ALLOWANCE FOR  
VARIATION.

T.35N. R.8E.

		32	31						
	30	5	22	4	17				
		20		21		18		6	7
	29	8	20	9	16	10	7	11	12
		27		20		15	10	11	12
	28	17	19	16	15	15	7 8 9	14	13
25		23		13		14		9	10
19	24				32	22	(37A)	23	38
26									
						37		(37B)	13
					33	27	(37A)	26	39
						36		41	42
					34	34	38	35	41
									36
					35			40	44

T35N R8E

EAST ON RANDOM BET 2-11  
VARIATION = 2° 30'

BEGIN AT SECTION CORNERS 2-3-10-11 AS POINTED  
OUT BY LIFE TIME RESIDENT WHO SAW THE OLD STAKE  
AND PUT A GATE POST THERE.  $\frac{1}{4}$  OF ROAD AND  
FENCES TO IT. SET STONE TO CORRESPOND

LIND 6" S85E 185.5 LKS  
OAK 6" N10W 192.1 LKS

82.82

INTERSECTION OF HIGHWAY 17 AND TOWN ROAD  
ACCEPTED AS BEST AVAILABLE EVIDENCE OF  
CORNER. SET SEC. CORS 1, 2, 11, 12.

15" BELOW TOP OF BLACKTOP ROAD

ELM 5" S70E 66.6 LKS  
ELM 5" N68E 67.3 LKS

OFF SET A STAKE EAST 30 LKS.

SET  $\frac{1}{4}$  STONE BET. 2-11 BY PROPORTIONAL  
MEASUREMENT. AT 41.91 CHAINS

12" BELOW TOP OF TOWN ROAD

HEMLOCK 8" N70W 79.2 LKS  
ASPEN 3 $\frac{1}{2}$ " N57E 70.8 LKS

OFF SET A STAKE NORTH 20 LKS

FENCE LINES DO NOT COINCIDE.

FROM STONE TO SOUTH DITCH 14'  
" " " NORTH " 5'

T.35N. R.8E.

EAST BET. 1, 12 ON RANDOM

11.5 ENTER SWAMP

32.7 LEAVE "

40.64 FOUND OLD STAKE AND BT.

SET 1/4 STONE. STAKE AND BTS WERE CHARRED BY FIRE MANY YEARS AGO. MOUNDED WITH STONE.

SUGAR 12" SOUTH 49.2 LKS.

NEAREST LARGE HARDWOOD TREE

72.59 TO IRON PIPE SECTION COR. AS SET BY V. MAINE ONEIDA CO SURVEYOR

SOUTH BET. 10-11

00.0 OFFSET EAST 10'

72.80 TO LAKE

70.41 HUBED AND OFF SET WEST AT 90°

180.5 ft. & BET HUB ON RANDOM

ON NORTH SHORE AND HUB ON RANDOM

ON SOUTH SHORE 81° 56'

19.30 CHAINS ACROSS BETWEEN HUBS.

89.71 STATION OF HUB ACROSS

93.40 ENTER SWAMP

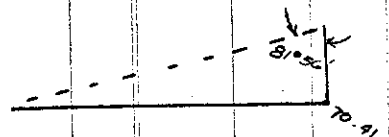
100.90 LEAVE SWAMP (109.0 SWAMP) (119.2 CREEK) FLOWS WEST

121.82 TURNED LT OFF BACK TAN. 94° 35'

119.25 ft. TO ORIGINAL SEC CORNER

TWO BT. FOUND LYING ON THE GROUND.

BACK TO 40.66 AND SET STONE



28  
T.35N. R8E.

WEST 70.15 LINKS

OAK 7" N49E 67.4 LINKS

OAK 5" S36E 48.4 LINKS

PINE 8" N26W 100 LINKS

MARKED WITH A CROSS (+) IN THE  
BARK ONLY SO AS NOT TO INJURE THE  
TREE. THE GROUND SLOPES DOWN WEST  
FOR ABOUT 30' TO FOOT OF A SHALLOW  
RAVINE

72.23 OFF SET WEST 109.7 LINKS AN SET

M.C. STONE AT <sup>MEAN</sup> HIGH WATER MARK

W. PINE 6" N 87E 124.5 LKS.

W PINE 12" N 18W 95 LKS.

POINT INTO LAKE LIES WEST ABOUT  
150 LKS. - MOUNDED M.C. WITH  
STONE.

91.97 OFF SET WEST 138 LKS TO EDGE  
OF LAKE AND SET M.C.

NORWAY PINE 13" S 50W 7LK

SUGAR 12 N 41E 60LK

WIND HAS BLOWN THE SUGAR DOWN SINCE.  
THE NORWAY HAS OLD M.C. BT.  
INSCRIBED ON IT - NOT ORIGINAL  
BUT ABOUT 25-30 YEARS OLD

121.97 SET 1/4 STONE BET 14-15 AS  
EVIDENCED BY ORIGINAL BTS.  
LYING ON THE GROUND.

ASH 9" N 18W 131.8 LINKS

CEDAR 11" N 80E 247.9 LINKS

53' NORTH TO SWAMP

57' EAST " "

60' SOUTH " TOP OF RIDGE

## T.35N. R.8E.

164.39 SET SECTION CORRS. 14, 15, 22, 23  
BY PROPORTIONAL MEASUREMENT BETWEEN NEAREST  
SEC. CORNERS.

MAPLE 3" S73W 50 LKS

MAPLE 5" N64E 49 LKS

MOUNDED WITH STONE. LAND TO THE  
EAST IS FLAT FOR 65' THEN FALLS STEEPLY  
TO A RAVINE

EAST BET. 14-23 ON RANDOM

4028 SET  $\frac{1}{4}$  STONE AS EVIDENCED BY  
OLD  $\frac{1}{4}$  STAKE - LAND IMPROVEMENTS TO  
IT. - FENCES TO IT.

W PINE 10" SOUTH 50 LKS

W PINE STUMP 18" N4°E 39 LKS

7210 ENTER MARSH LAKE ABOUT 75' SOUTH

82.32 SET SEC. CORRS 13, 14, 23, 24

AT POINT WHERE THE TRUE SECTION LINE  
CROSSES THE  $\frac{1}{2}$  OF HIGHWAY 17.

6" BELOW TOP OF GROUND IN THE  
DITCH 100' SOUTH OF END OF CURVE  
IN THE ROAD

ASPEN 7" N78W 30 LK.

ASPEN 7" S15W 58.6 LKS.

OFF SET A STAKE 30 LKS. WEST

EAST BET 13-24

1313 ENTER SMALL SWAMP

1685 LEAVE " "

39.50 SET  $\frac{1}{4}$  STONE 61.3' NORTH

OFF RANDOM LINE AT FENCE LINE.



## T35N R.8E.

TO WHICH IMPROVEMENTS IN LAND  
HAVE BEEN MADE. MAKING IT THE LEGAL  
 $\frac{1}{4}$  LINE.

ELM 16" S24°E 105.5 LKS

ELM 3 N32°W 42. LKS

MOUNDED WITH STONE.

73.89 TO SEC. CORNS 13, 18, 19, 24 AS

SET BY ONEIDA CO.

76

EAST BET 11-14 VAR. : 2° 30'

BEGINING AT M.C. ON WEST SHORE OF  
HILT LAKE EVIDENCED BY OLD STAKE  
AND B.T.S. SET STONE IN THE SWAMP,  
BRACED WITH STAKES AND MOUNDED WITH  
STONES

SPRUCE 6" N70W 37.6 LINKS

SPRUCE 5" S56W 32.6 LKS.

AN OLD BUT NOT ORIGINAL BEARING TREE  
BEARS N17E 49" (TAMARAC 9").

SOUTH 20° E. AN OLD TAMARAC B.T. 6" -  
57". M.C. IS NORTH 176' FROM OUT-  
LET 22' WIDE. SPRUCE GROVE AT M.C.

00.0 SET M.C. ON EAST SHORE 29.3 NORTH  
OF RANDOM LINE

NORWAY PINE 10" S78E 10.6 LKS

A STONE 2'x3', 12" ABOVE GROUND

43.3L. TO NEAREST EDGE N344

MOUNDED WITH STONE AT FOOT OF  
SLOPE APROX. 18' HIGH.

35.6 SET  $\frac{1}{4}$  COR BY PORPORTIONAL  
MEASUREMENT

37

T.35N. R.8E.

PINE STUMP<sup>25"</sup> S11°W 115 LKS.

HEMLOCK 6" N62E 103.5 LKS.

STONE IS IN AN OPEN CLEARING; 2'  
NORTH OF AN OLD LOGGING ROAD WHICH  
BEARS SE-NW AT THIS POINT

7652 SET SEC CORNS 11, 12, 13, 14  
AS IDENTIFIED BY RUDOLPH HORN  
WHO WORKED ON SURVEY CREWS IN  
THIS LOCALITY 30 YEARS AGO. HE  
STATES THAT MANY CORNERS WERE LOST  
THEN. FENCE LINE AGREES.

NORTH OFF RANDOM 60.4' - BURIED  
THE STONE 12" BELOW BLACK TOP IN  
WEST TIRE TRACK IN HIGHWAY 17.

BIRCH 10" S58E 67.9 LK

ASH 8" N37E 119.7 LK

MAPLE 9" N21W 130.3 LK

PLANTING POST MARKED LINCOLN-CO.

PLANTING NO. 1 MAY 1937 BEARS

N64W 47.3 LKS. OFF SET A

POST EAST 25' = 37.87 LKS

EAST BET 12-13

37.38 SET  $\frac{1}{4}$  STONE AS EVIDENCED  
BY OLD STAKE AND BEARING TREES  
AN TESTIMONY OF RUDOLPH HORN.  
STONE IS ON THE NORTH EDGE OF  
SMALL OPENING IN THE SWAMP 113' WEST  
TO EDGE OF SWAMP 65' NORTH  
TO EDGE OF SWAMP. 125' SOUTH  
TO EDGE OF SWAMP.

T35N R8E

- SPRUCE 3" S20E 64.8 LKS.
- SPRUCE 4" S71W 67.4 LKS.
- OLD TAMARAC BT 12" N39W 80.3 LKS.
- OLD TAMARAC BT 12" N35E 81.6 LKS.

MOUNDED WITH STONE AND  
 INSERTED NEW STAKE AS AN AID  
 IN LOCATING THE STONE.

77.54 TO IRON PIPE SECTION CORNS.  
 7,12,13,18 AS SET BY ONEIDA CO.

SOUTH BET 11-12

FROM SEC. CORNS. 1,2,11,12 ALONG HIGH-  
 WAY 17.

40.95 SET  $\frac{1}{4}$  STONE AS EVIDENCED BY  
 WITNESS AND INTERSECTION OF ROADS.  
 12" BELOW BLACK TOP

- SPRUCE 4" S42E 66.9 LKS
- SPRUCE 3 $\frac{1}{2}$ " N55W 53 LKS.

OFF SET A STAKE WEST 30 LKS

82.08 TO STONE SEC CORNS. 11,12,13,14  
 SEE PAGE 11.

SOUTH BET 13-14

BEGIN AT SEC CORNS. 11,12,13,14  
 FOLLOWING HIGHWAY 17.

20.00 ROAD WEST TO HILT LAKE  
 41.27 SET  $\frac{1}{4}$  STONE MIDWAY BETWEEN  
 SEC. CORNERS.  
 12" BELOW TOP OF BLACK TOP

## T35N R8E

ASPEN 4" N88E 65 LKS

BASSWOOD 3½ 582W 41 LKS

OFF SET A STAKE WEST 30 LKS

82.54 TO SEC CORS 13, 14, 23, 24

SEE PAGE 9

## EAST BET 16-21

BEGIN AT SEC CORS 16, 17, 20, 21.

AS EVIDENCED BY INTERSECTION OF  
ROADS AND FENCES AND STATEMENT OF  
RESIDENT.

PINE STUMP 12" S38W 69.7

PINE STUMP 18" N64W 53.2

OFF SET A STAKE NORTH 15 LKS

STONE IS 12" BELOW TOP OF ROAD

33.50 ENTER SWAMP.

40.15 TURNED RT. OFF BACK TAN 108° 0'

TO POST (WITNESSED) 5.6'

AS SET ¼ STONE AND MOUNDED  
WITH STONE.

SPRUCE 3" S67E 73.3 LKS.

SPRUCE 4" N50W 93.8 LKS.

OLD SPRUCE BT S10W 13.5 LKS.

WEST TO LEAVE SWAMP 335'

53.75 LEAVE SWAMP

72.20 CREEK FLOW NW 8' WIDE.

80.27 TURNED RT. OFF BACK TAN. TO

IDENTIFIED SEC CORS 15, 16, 21, 22

OLD STAKE AND B.T. 91° 24'

8.0' AND SET COR ~~80~~ ACCORDINGLY.

T.35 N. RBE.

ASPEN 3" N40W	26 <sup>2</sup> / <sub>3</sub> LINKS
ASPEN 4" S28W	28.2 LINKS
ASPEN 3" N50E	70.5 LINKS
ASPEN 3" S72E	19.7 LINKS
OLD BIRCH BT 16" S40E	21.2 LKS (NOT ORIGINAL)

EAST BET 15-22.

CONTINUING RANDOM LINE BET 16-21

8.50	ENTER SWAMP	43.7
19.90	LEAVE SWAMP	63.3
36.80	CREEK FLOWS SW	69.1
41.59	SET <sup>1</sup> / <sub>4</sub> STONE BY PORTIONAL MEASUREMENT BET SEC CORNERS	75.9
	PINE STUMP 28" N82W 13.8 LK	82.10
	ASH 3K" S51W 84.7 LK	
	MARKED ONLY IN THE BARK	
	MOUNDED WITH STONE	
83.18	TO SEC CORS 15, 14, 22, 23	
<del>83</del>	AS PREVIOUSLY SET. SEE PAGE 9	

NORTH BET 15-16

TURNED NORTH BET 15-16 OFF STATION 80.27  
BET 16-21 (SEE PAGE 13)

43.37	TURNED LT. OFF BACK TAN. 83°48'	6.9
	120.0' TO OLD POST. FOUND TWO OTHER POST, NONE WITNESSED.	17.70
41.98	STA. ON RANDOM OFF WHICH SET	24.2
		36.10
		40.3

T.35N. R.8E.

1/4 STONE MIDWAY BET SEC. CORNERS.  
 OFF RANDOM EAST 2.75'. ALL  
 3 STAKES ARE EAST OF STONE.  
 2 ARE SOUTH - 1 NORTH.  
 STONE SETS ON A RIDGE IN A  
 SWAMP.

CEDAR 7" S19E 66.2 LKS  
 CEDAR 9" S57W 88.6 LKS

43.74 ENTER SWAMP  
 63.30 LEAVE "  
 69.10 ENTER "  
 75.90 LEAVE "  
 82.16 TURNED RT TO IRON STAKE STUMPS  
 AGREE AS BTS OFF ORIGINAL SURVEY.  
 2° 50' 110.2' SET CORS. TO SECS.  
 9, 10, 15, 16. UPON DIGGING THE  
 HOLE THE POINT OF AN OLD STAKE  
 WAS UNCOVERED  
 W PINE 12" N81E 75.0 LKS  
 MAPLE 2 1/2 N30W 13. LKS  
 BIRCH 2 1/2 S25E 8.1 LKS  
 BIRCH 3 S21W 45.8 LKS  
 MOUNDED WITH STONE

EAST BET 10-15

TURNED EAST OFF 82.16 ON RANDOM  
 BET 15-16 (ABOVE)

6.90 ENTER SWAMP  
 12.70 LEAVE "  
 24.20 WEST SHORE OF POND  
 36.10 EAST " " "  
 40.38 SET 1/4 STONE BY PORPORTIONATE MEASUREMNT

T35N R8E

NORTH 86.75' (FT.) SPRUCE GROVE NORTH 75'

TAMARAC 6" S71E 103.9 LKS  
 NORWAY 12" N57W 72.4 LKS  
 MOUNDED WITH STONES

52.80 CREEK FROM HILT LAKE FLOWS NW

68.76 TURNED LT TO MC. STONE OFF  
 TAN. AHEAD 46° 25' TO 32.4' (WEST  
 SHORE (SEE PAGE 10)

200

NORTH BET. 9-10

CONTINUING RANDOM LINE BET 15-16 (SEE  
 PAGE 14) CONTINUING SAME STATIONING.

95.40 SMALL LAKE APPROX. 325' WEST

217

131.50 ENTER SWAMP

212

148 LEAVE "

124.11 SET 1/4 STONE BET 9-10

73.8' (FT.) EAST. NEAR FOOT OF  
 HILL WHICH RISES TO THE SE. 60'  
 NE HILL RISES TO THE N.W.  
 VALLEY BRS. SW. - NE.

220

SPRUCE 10" N27°E 102.1 LKS

OAK 3" S19W 30.3 LKS

164.40 SET SEC. CORS. 3, 4, 9, 10

BY PORPORTIONAL MEASUREMENT  
 (EAST 142.3')

OAK 4 1/2 N55E 45.9 LK

W PINE 14 S73E 143.9 LK

OAK 9" S53W 34.5 LK

236

CREEK FROM SQUAW LAKE 155' EAST.  
 MOUNDED WITH STONE.

## T35N R8E

NORTH BET. 3-4

CONTINUING RANDOM LINE BET 9-10 (SEE PAGE 16) SAME STATIONING.

200.18 OFF SET EAST AND SET  $\frac{1}{4}$  STONE ON ROAD ("A") ASSUMED TO BE ON THE  $\frac{1}{4}$  SEC LINE AS SHOWN ON MAPS. (368.7') 12" BELOW TOP OF ROAD. 275' WEST TO ANGLE POINT IN ROAD 1345' EAST TO  $\frac{1}{16}$  CORNER ( $\frac{1}{8}$  COMMON NAME FOR  $\frac{1}{16}$  LINE)

BASSWOOD 4" S5°E 45.1 LK.

W PINE 15" N8W 69 LK.

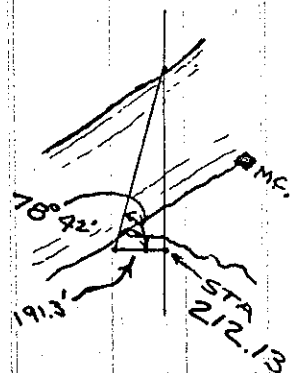
OFF SET A POST SOUTH 30 LKS

217.21 TO WISC RIVER.

212.13 OFF SET AT 90° TO WEST 191.3' (FT.) FOR TRIANGULATION.

78°42' BET HUBS ON TANGENT.

226.0 FOUND OLD M.C. POST EAST 503.3' AND TURNED 71°22' LT TO (N.E.) POST 74.6' (FT) WHICH IS DIRECTLY UNDER THE POWER LINE. MOUNDED WITH STONE.



ASH 7" N39E 75.6 LK

ELM 16" S34W 129.9 LK

236.25 SET M.C. STONE 585.5' EAST OFF RANDOM LINE AT MEAN HIGH WATER MARK

W. PINE 8 N20E 100.1 LINKS

ASPEN 8 S62W 111.1 LINKS



T.35N. R8E

BET ~~10-3~~

~~COMMENC~~

CONTINUING RANDOM LINE FROM HUB ON NORTH SIDE OF RIVER. HUB ON NORTH SIDE  
EQUALS 0+00.

0.0 NORTH BANK OF RIVER

30.47 TURNED LT OFF BACK TAN 68° 16'  
698.6 (FT) TO IDENTIFIED SEC  
COR 3, 4, 33, 34

SET STONE. AS EVIDENCED BY OLD  
STAKE AND B.T. ABOUT 15 YEARS OLD

OLD B.T. JACK PINE S4°E 23.5 LKS

N. PINE 12" S77E 36.0 LKS

J PINE 12" S65W 68.0 LKS.

BET 10-3 (WEST)

COMMENCING 10' EAST AND 64.1' SOUTH  
OF SEC COR 2, 3, 10, 11 THEN WEST

42.19 TURNED RT. (N.W) TO POST SET IN  
OLD SURVEY BY VAUGHN 71° 55' 390.2'  
SET 1/4 STONE. AS EVIDENCED

4590 ENTER ALDER SWAMP

51.00 LEAVE " "

5650 ENTER CEDAR SWAMP

5750 WINDFALL

6140 LEAVE CEDAR SWAMP.

6910 ENTER SWAMP

7510 LEAVE " "

83.20 E CREEK FROM SQUAW LAKE 10' WIDE

85.26 TO SOUTH OF SEC CURS 3, 4, 9, 10,  
71.7' (SEE PAGE 16)

UPON DIGGIN HOLE  
UNEARTHED OLD IRON  
STAKE, FENCE TO  
THIS CORNER.

W PINE 22" N76W 110.3  
BLM 14° 52' W 19545

T35N R0E

NORTH BET 16-17

BEGINING 20.3 (FT) EAST OF SEC. CORRS.  
 16,17,20,21. THEN NORTH 90° OFF E.W. LINE  
 3480 FLOWAGE FROM BEVER DAM. 1/4 POST  
 SUBMERGED SO WAS NOT SOUGHT OR  
 REPLACED. W.P.A. PROJECT WILL LOCATE  
 ADAM NEAR HERE FOR LAKE PROJECT.

33.67 OFF SET WEST 293.3 FOR TRIANGULA-  
 TION OF FLOWAGE ANGLE BET HUBS  
 ON RANDOM = 77° 29'

53.69 STATION OF HUB IN SWAMP ACROSS  
 THE FLOWAGE

68.60 LEAVE SWAMP

74.20 ENTER "

80.76 TURNED RT OFF TAN AHEAD TO CORRS.  
 8,9, 16,17; (88°0'14.2') SET STONE TO CORRES-  
 POND TO OLD BEARING TREES. UPON  
 DIGGING HOLE, UNEARTHED AN OLD  
 STAKE PROBABLY ORIGINAL. BRACE  
 THE STONE WITH SPRUCE STAKES AND  
 SAND.

SPRUCE "4"	N 67 E	106.51	LK
" 4"	N 65 W	95.0	LK
" 3	S 26 E	70.91	LK
" 3	S 58 W	78.03	LK

EAST TO EDGE OF SWAMP 105' (FT.)  
 WEST " " " " 60' (FT.)

EAST BET 9-16

OFF STA 80.76 ON RANDOM  
 BET 16-17 ABOVE

T35N R8E

3.5 ENTER SWAMP 130.1  
 6.7 LEAVE " 164.1  
 9.3 ENTER "  
 11.2 LEAVE "  
 16.8 ENTER "  
 29.2 LEAVE "  
 40.09 SET 1/4 STONE BY PROPORTIONAL MEASUREMENT. NORTH OFF RANDOM 45.6' (FT)

ASPEN 3 S 2° W 41.5 LK.  
 " 4 N 13° W 9.8 LK.

77.74 TURNED LT. OFF TAN. AHEAD TO SEC CURS 9, 10, 15, 16 (SEE PAGE 15)  
 31° 22' 178.4'

NORTH BET 8-9

CONTINUING RANDOM LINE AND STATIONING OF LINE BET. 16, 17. (PAGE 19)

86.40 SMALL LAKE LIES EAST APPROX. 350' (FT.)

84.30 LEAVE SWAMP 40.0

89.20 ENTER " 28.0

95.30 LEAVE "

115.90 ENTER SWAMP

121.21 TURNED LT. OFF TAN AHEAD TO 1/4 POST. 24° 10' 105.6' (FT.)

AS EVIDENCED BY ORIGINAL BT STUMPS. AND AN OLD STAKE UPON DIGGING UNEARTHED OLD STAKE THOUGHT TO BE ORIGINAL

OLD B.T. 4" S 25 E 13.18 LKS  
 N. PINE 7" S 62 E <sup>94.1</sup> ~~103.8~~ LKS  
 SPRUCE 4" N 83 W 103.8 LKS

MOUNDED WITH STONE 81.5

## T35N. R8E.

130.10 LEAVE SWAMP.

164.65 SET SEC. CORS. 4, 5, 8, 9 AS  
EVIDENCED BY  $\odot$  HIGHWAY "A" AND  
OLD B.T.S. NOT ORIGINAL.

1330' WEST TO  $\odot$  OF TURN OF ROAD  
TO THE SOUTH

OLD BT ON W PINE (TREE) 24" N57W 98.5 LKS

OLD BT ON PINE STUMP S36W 57.5 LKS.

OFF SET A STAKE NORTH 30 LKS  
STONE IS 12" BELOW TOP OF ROAD

EAST BET. 4-9

TURNED EAST OFF ABOVE RANDOM LINE AT  
STA. 164.6<sup>51</sup>

10.6 OFF SET SOUTH 36.5' TO STAY  
ON ROAD

28.8 OFF SET SOUTH 129.8' TO STAY ON  
ROAD

40.66 SET  $\frac{1}{4}$  COR STONE 155.7' NORTH  
IN A TRIANGLE RESULTING FROM  
NEW ROAD CUTTING OFF A SHARP  
TURN. 90' SOUTH TO  $\odot$  OF OLD  
ABANDONED ROAD 54' EAST TO  
 $\odot$  OF OLD ABANDONED ROAD.

POWER POLE NO 330-1899

S38E 199.4 LKS.

TRACES OF OLD ROAD AS CALLED FOR  
IN ORIGINAL NOTES FOUND NEAR COR.

81.90 TO RT.  $\odot$  TO SEC. CORS. 3, 4, 9, 10.

SEE PAGE 18

## T35N R8E

NORTH BET 4-5

260.

CONTINUING NORTH THE RANDOM LINE BET 8-9  
AND THE SAME STATIONING.

252.46 OFF SET A HUB EAST 162.9' FOR  
TRIANGULATION.  $\angle$  BET. HUBS ON TAN. =  $69^{\circ}22'$

253. WISC. RIVER

205.3 SET  $\frac{1}{4}$  COR 241.6' OFF RANDOM  
LINE EAST

N. PINE 11 S81W 243. LKS  
ONLY LARGE TREE NEAR OPEN  
POT HOLE 300' WEST OF STONE  
100' ACROSS. MOUNDED WITH  
STONE

M.C. SET M.C. ON SOUTH BANK OF RIVER  
46.0' FROM EDGE OF WATER. FOR  
PROTECTION FROM FLOOD WATERS  
(538.1' OFF RANDOM EAST)

RIDGE OF ROCK UPON WHICH NO TREES  
GROW 15' X 60' LIES WEST 12'.

MOUNDED WITH STONE.

BITTERNUT 6" N63E 53 LK

BITTERNUT 4" N29W 78.3 LK

M.C. SET M.C. ON NORTH BANK AS EVIDENCED  
BY OLD STAKE (NOT ORIGINAL)

176' SOUTH OF SEC. COR. 4, 5 32, 33

CEDAR 5" N83E 20.6 LK

" 4" N22W 13.6 LK

AT RAPIDS.

3.

8

42.

32

T35N R8E

260.48

SET SEC. CURS. 4, 5, 32, 33  
602.5 EAST AS EVIDENCED BY  
OLD STAKE (NOT ORIGINAL.)  
TURTLE BLAZED LINE 5 YRS. OLD  
EXTENDS TO THE RIVER

W PINE 12" S56W 45.5 LKS  
CEDAR 5" WITH TURTLE BLAZE  
SOUTH 52 WEST 20 LK  
CEDAR 6" S42E 70.6 LK

STONE SETS 6' UP A STEEP SLOPE ABOUT  
25' HIGH.

WEST BET. 17-20

BEGINING AT CURS 16, 17, 20, 21 (SEE  
PAGE 13)

3.44 OFF SET NORTH TO STAY ON  
ROAD 32.0'

8.34 OFF SET NORTH 25.5 (SAME REASON.)

42.07 TURNED LT. OFF BACK TAN. 88° 45'  
167.2' 1/4 STAKE OLD BUT NOT  
ORIGINAL

32.60 CREEK FLOWS SOUTH  
1/4 STAKE IS WITNESSED BY TWO OLD  
(NOT ORIGINAL) B.T. MOUNDED  
WITH STONE

BIRCH 3" N42W 30.8 LKS  
OLD HEMLOCK BT 13" N67W 9.09 LKS  
OLD MAPLE BT 13" N79E 16.2 LKS.  
ASPEN 2 1/2" S52E 43. LKS.

FENCE LINE RUNNING E-W ON TRUE LINE,

9

22'

R

S

ENCED

2, 33

T35N R8E

BUT THE N-S 1/4 LINE IS 63' TOO FAR WEST. LAND OWNER WHO FENCED IT STATED THAT HE HAD A WIRE THAT SHOULD REACH TO THE 1/4 COR. SO HE WENT AS FAR WITH THE FENCE AS THE WIRE REACHED.

75.8

78.00 SET SEC. CORS. 17, 18, 19, 20 BY DOUBLE PROPORTIONAL MEASUREMENT. NORTH 390'

CHERRY BRUSH - NOTHING AVAILABLE FOR DEFINITE WITNESS.

THE LAND TO THE SOUTH SLOPES DOWNWARD FOR 65' TO A VALLEY. - NORTH 15' TO TOP OF RIDGE - POT HOLE LIES S.E.

MOUND WITH STONE

SOUTH BET 19-20

116.91

TURNED SOUTH BET 19-20 OFF RANDOM BET 17-20 AT STA 84.5' (SEE RANDOM ABOVE)

32.85 TURNED LT. OFF TAN AHEAD TO OLD 1/4 COR. STAKE. 67° 08' 219.7'

B.T. AND BLAZE LINE AS EVIDENCE. (NOT ORIGINAL.)

150.68

NORTH FROM STONE TO LEAVE SWAMP 37'

W. PINE 10" (IN SWAMP) S84E 150.6 LK

W. BIRCH 10" N80W 76.5 LK

(AT EDGE OF SWAMP)

OLD TAMARAC BT 10" S95E 8.5 LK.

35.20 ENTER SWAMP E-W

40.00 LEAVE " E-W

60.50 OFF SET WEST 2' TO AVOID BIG TREE.

(TIMBER)

65.00 CREEK E-W FLOWS WEST

T35N R8E

75.86 TURNED RT. OFF BACK TAN. 90°42'  
278.5' TO SEC. CORS. POST AS  
SET IN LATE SURVEY 19, 20, 29, 30.  
FENCE LINES TO IT

W. PINE	STUMP	17"	N55W	175.65 LKS.
"	"	24"	N40E	90 LKS
"	"	11"	S23W	91.06 LKS.
"	"	12"	S80E	40.3 LKS

MOUNDED WITH STONE.

WEST BET. 18-19

CONTINUING RANDOM LINE BET 17-20  
ALSO STATIONING.

116.91 SET 1/4 STONE BY PROPORTIONAL  
MEASUREMENT NORTH ~~326~~' 302.7'  
LAND LEVEL.

ELM	9"	N29E	121.8 LKS.
ASH	5"	S88E	84.4 LKS.

MOUNDED WITH STONE.

150.68 TURNED LT. OFF BACK TAN TO  
ORIGINAL SEC. CORS. 13, 18, 19, 24  
85° 43' 406.3'

STAKE 10 YRS. OLD AND FENCE LINES  
TO IT. BEARING TREE STUMPS AGREE.

ASPEN	6"	S26°E	67.6 LKS.
CHERRY	4"	N31E	83.3 LKS.
(SMALL) W BIRCH		N 10 W	219.4 LKS.
(" ) W BIRCH		S 12 W	66.2 LKS.

FAR  
ED  
TO  
E

ve)

T

37'

LK.



T 35N R 8E

WEST BET 19-30

OFF STATION 75.86 OF: RANDOM BET 19-20

30.86 TURNED RT OFF FORWARD TAN. 16° 2' TO IDENTIFIED 1/4 COR 256.9'

30.80 ENTER SWAMP. SPRUCE 4 1/2" N 14 W 30.0 LK  
W. PINE 9" SIDE 125.0 LK

42.80 LEAVE " MOUNDED WITH CLAY

51.00 ENTER "

66.70 LEAVE "

69.26 TURNED RT OFF TAN AHEAD 86° 04' 139.9' OLD AND NEW STAKES BLAZE LINE AGREES. FENCE LINES TO IT. SET SEC. CURS 19, 24, 25, 30

SPRUCE 2" N 64 E 132.9 LK

ASPEN 2" S 67 E 43.79 LK

WEST 166' (FT) TO EDGE OF CREEK

NORTH 550' (FT) TO CREEK

0.68

20.80

37.70

75.81

NORTH BET 19-24

OFF STA 69.26 ON RANDOM BET 19-30

7.90 CREEK N-S

10.80 SAME CREEK NEAR JUNCTION OF A SMALL CREEK WITH IT.

39.13 TURNED RT. OFF FORWARD TAN. 37° 42' 191.4' TO OLD STAKE ON AN OLD FENCE LINE THE CORRECT DISTANCE FROM POND NORTH ALONG FENCE (68')

HEMLOCK 13" N 19 E 86.6 LKS.

END OF LINE. DID NOT TIE INTO CURS TO SEC CURS. 13, 18, 19, 24.

0

68

T35N R8E

WEST BET 8-17

OFF STA. 80.76 ON RANDOM BET 17-16  
(SEE PAGE 19)

0.68 ~~BL~~ LEAVE SWAMP.

20.80 & TOWN ROAD N-S.

37.70 SET  $\frac{1}{4}$  STONE NORTH 144.1' OFF  
RANDOM LINE (PROPORTIONAL MEASUREMENT)

LAND LEVEL 40' TO THE SOUTH.

" " 8' TO THE NORTH THEN

FALLS TO THE NORTH ~~FOR~~ 15' IN 20'

MAPLE 2 1/2" S 43 E 77.7 LKS.

ASPEN 5 1/2" N 80 E 72.7 LKS.

75.81 TURNED LT. OFF BACK TAN TO  
IDENTIFIED CORS. TO SECS. 7, 8, 17, 18  
87° 23' - 290.0' (FT). OLD STAKE  
AND B.T.S. (NOT ORIGINAL.

~~SOUTH BET 17-18~~

125' WEST TO LEAVE SWAMP. BLAZE  
LINE TO IT.

OLD TAMARAC B.T. N 17 W 14.7 LKS.

" " " N 86 E 24.1 LKS

TAMARAC 6 1/2" N 20 W 33.9 LKS

W BIRCH 6" N 41 E 13.8 LKS

W BIRCH 7" S 15 E 19.8 LKS.

SOUTH BET 17-18

OFF STA. 75.81. ON RANDOM BET. 8-17  
(SEE ABOVE)

20

LK  
LK

L

4'

E

SEE

T35N R8E

4.60 & CREEK FLOWS SW.  
 15.70 LEAVE SWAMP.  
 19.55 ENTER SWAMP.  
 35.68 SET 1/4 STONE (PROPORTIONAL MEASUREMENT)

78.2' WEST IN THE ROOTS OF AN 18"  
 CEDAR STUMP. OLD BLAZE LINE NEAR.  
 WEST TO LEAVE SWAMP 105'  
 SOUTH " " " 175'

CEDAR 7" S33W 25. LKS.  
 CEDAR 10" N70E 90.1 LKS.

37.10 LEAVE SWAMP.  
 75.75 TO SEC. CORS. 17, 18, 19, 20 WEST  
 169.6'

WEST BET 5-8

OFF STA 164.52 ON RANDOM BET 8-9  
 (SEE PAGE 20)

20.70 ROAD TURNS SOUTH  
 40.98 TURNED RT OFF FORWARD TAN 91° 52'  
 87' (FT.) TO ORIGINAL 1/4 COR. AS  
 EVIDENCED BY ORIGINAL BT.

A WATER HOLE LIES S.E. 28'  
 W. PINE 7" S25W 155.5 LKS.  
 ASPEN 5" N42W 5.0 LKS.

OLD BT. STUMP 11° NORTH 20 WEST. 12.1 LKS.

78.88 TURNED LT OFF BACK TAN. TO OLD  
 POST B.T.S. TO WITNESS IT. 60° 00'  
 335.4' (FT.) SET SEC CORS. TO 5, 6, 7, 8  
 LAND ROLLING. STONE SETS IN  
 A CLEARING. 350' NORTH TO ASPEN  
 GROWTH. 525' SOUTH TO ASPEN GROWTH  
 MOUNDED WITH STONE.

## T35N R8E

ASPEN 8" N88W 142.3 LKS.  
 ASPEN 6" N33E 101.5 LKS.  
 OLD PINE BT 10" N84W 43. LKS.

## SOUTH BET. 7-8

TURNED SOUTH ON RANDOM OFF STA  
 78.88 ON RANDOM BET. 5-8

15.60 ENTER SWAMP  
 22.40 WEST EDGE OF LAKE  
 29.00 LEAVE SWAMP  
 36.28 SET  $\frac{1}{4}$  STONE BY PROPORTIONAL  
 MEASUREMENT. 220.6' EAST OFF  
 RANDOM.

N. PINE 12" S44E 56.8  
 N. PINE 13" S20W 84.4

MOUNDED WITH STONE.

57.40 & HIGHWAY "A"

73.64 TURNED RT OFF BACK TAN.  
 142° 41' - 350.4' TO SEC  
 CORS 17, 18, 19, 20, (SEE PAGE 24)

## NORTH BET 5-6

BEGINING AT STA. 78.88 BET. 5-8

76.01 OFF SET EAST 200.7 FOR TRIANGUL-  
 ATION ACROSS. WISC. RIVER.

77.40 TO WISC RIVER.

44.40 SET ME SOUT SHORE EAST OF RANDOM  
 356.2' (FT) LAND AT THIS POINT  
 SLOPES DOWN RAPIDLY TO THE NORTH.

N. PINE 14" S15W 21 LKS  
 ONLY TREE LARGE ENOUGH TO  
 WITNESS.

T35N R.8E.

SET M.C. ON SOUTH SHORE OF RIVER  
AS EVIDENCED BY OLD BT AND POST-(NOT  
ORIGINAL

10 65  
30 75

OLD BT. ASH 16" S76E 22 LKS.  
ELM 16" S68W 55.9 LKS.

33' TO CONSERVATION TELEPHONE LINE EAST.  
5' TO WATERS EDGE (NOT TIED IN TO LINE)

76.01 FROM OFF SET 200.7' EAST TURNED  
62° 43' BET. HUBS ON RANDOM. STA.  
OF HUB ON N. SIDE = 81.91.

82.89 SET M.C. STONE N. SIDE OFF RIVER  
EAST 558.4'

ASH 7" S79E 47.3 LKS  
PINE STUB 24" S89W 53.8 LKS.

(LATER LEARNS THAT THE STUB WAS  
KNOCKED DOWN.)

31.40  
66.50

(20' TO LOW WATER LEVEL OF RIVER.)

95.25 TO SEC CORN. 5, 6, 31, 32.

71.62

AS EVIDENCED BY OLD BLAZE LINE  
AND STAKE.

ASPEN 4 1/2" S70W 35.75 LKS  
SPRUCE 4" N81W 45.45 LKS  
ASPEN 4 1/2" S31E 41.0 LKS  
WBIRCH 6" N46E 59.4 LKS.

CONSERVATION TELE. LINE POLE NO  
S81 DUE EAST 47.1' (FT.)

WEST 4-33

Co  
OF  
AT

WEST OFF STA. 27.27 ON RANDOM  
BET 3-4. NORTH OFF WISC. RIVER  
(SEE PAGE 17)

T.35N. R.8E.

1065 & CREEK 46' ACROSS.  
 3075 TURNED LT. OFF BACK TAN. 53°21'  
 90.6' TO ¼ COR. WHEN LOOKING  
 FOR COR. FOUND A STONE MOUND,  
 DUG INTO IT AND FOUND POINT OF AN  
 OLD STAKE AND CHARRED REMAINS OF  
 THE STAKE ITSELF BETWEEN THE STONES.  
 GOOD ALIGNMENT AND CORRECT DISTANCE.  
 STONE SETS ABOUT HALF WAY  
 UP A LONG SLOPE WHICH SLOPES  
 SOUTH TO THE RIVER. - IN THE OPEN  
 ABOUT 600' WEST IS A FIELD ABOUT  
 6 ACRES.

81' WEST TO NEW FENCE.

JACK PINE 15° S24E 497.4 LKS.

31.40 FENCE

66.50 OFF SET RANDOM LINE TO AVOID  
WISC. RIVER NORTH 42.01

71.62 TURNED RT. OFF BACK TAN. TO SEC  
COR. AS SET IN RECENT SURVEY  
NO WITNESS 43°-00' 111.5'

SOUTH TO NEW MC. POST FROM  
SEC. COR. 176' (APPROX. CORRECT.)

SET SEC. COR. TO STAKE. (SEE PAGE 22)

WEST BET-5-32

CONTINUING BET 5-32 THE ABOVE RANDOM.  
OFF SETTING NORTH 3.6848 CHAINS.  
AT STATION 71.62 (ABOVE)

## T. 35 N. R. 8 E.

109.86 TURNED RT.  $81^{\circ}15'$  OFF BACK TAN  
TO  $\frac{1}{4}$  POST SET IN RECENT  
SURVEY. (ACCEPTABLE) 106.5' (FT.)  
SET THIS  $\frac{1}{4}$  STONE TO REPLACE  
POST BEARING ELI HERBERTS' NAME -  
TOMAHAWK. FROM STONE 78' NORTH  
TO LEAVE SWAMP AT FOOT OF  
SLOPE.

CEDAR 6" N  $52^{\circ}E$  15.0 LKS.

CEDAR 6" S  $9^{\circ}W$  30.79 LKS.

MOUNDED WITH STONE

148.98 TURNED LT OFF FORWARD TAN  
TO OLD POST. AGREE WITH NOTES.  
 $32^{\circ}00'$  28.5' SET COR. SECS  
5, 6, 31, 32 - (SEE PAGE 30)

SOUTH BET 21-22

CONTINUING RANDOM LINE BET 15-16 FROM  
STA. 0.0

41.5 ENTER SWAMP

15.15 CREEK BAS. NNW. (FLOWS NNW)

16.10 SAME CREEK

2040 E OF ABANDONED ROAD.

43.50 LEAVE SWAMP.

43.48<sup>y</sup> TURNED RT. OFF BACK TAN. TO  $\frac{1}{4}$   
POST SET IN RECENT SURVEY.  $32^{\circ}29'$   
214.1' (FT.)

SPRUCE 4 S  $34^{\circ}W$  10.1 LKS

SPRUCE 3 N  $16^{\circ}E$  44.8

OLD SPRUCE BT. 5" S  $11^{\circ}W$  7.88 LK

" " " 5" N  $38^{\circ}E$  7.74 LK

SOUTH 170' TO LEAVE SWAMP NEAR ROAD.

EAST 150' " " " " "

## T35N R. E.

43.48<sup>S</sup> OFF SET RANDOM EAST 159.2 TO  
FOLLOW ROAD

81.41 TURNED LT. OFF FORWARD TAN.  
83° 40' <sup>75.2'</sup> TO SEC. COR. 21, 22, 27, 28  
AS ESTABLISHED FROM  $\frac{1}{2}$  OF ROAD AND  
FENCE LINE. AGREES WITH  $\frac{1}{4}$  COR EAST  
FOR LINE AND DISTANCE. BEST EVIDENCE  
AVAILABLE. SET STONE 12" BELOW  
TOP OF ROAD.

PINE STUMP 16"	N27W	59.9 LKS
MAPLE 13"	S38W	90.1 LKS
ASPEN 4 $\frac{1}{2}$	S31E	96.6 LKS
PINE STUMP 12"	N81E	98.3 LKS

OFF SET A STAKE WEST 30 LKS.

ROAD BET 27-28

BEGINNING AT 81.91 ON RANDOM BET 21-22  
CONTINUING STATIONING

94.0 ENTER SWAMP

98.0 CREEK FLOWS S.W.

108.80 LEAVE SWAMP

121.00 SET SEC  $\frac{1}{4}$  COR BY PROPORTIONAL  
MEASUREMENT. 58' EAST. STONE  
SETS IN THE OPEN PASTURE.  
DID NOT ACCEPT FENCE LINES BECAUSE  
THEY ARE CROOKED (NO WITNESS REMAINS)

PINE STUMP 30" S60W, 66.6 LKS

ASH 11" N.22E. 191.3 LKS.

160.33 TURNED LT. OFF FORWARD TAN.

TO SEC COR. POST VERY OLD.

B.T. TO VERIFY IT. 77° 30' 42.3'

SET SEC. STONE COR TO SECS.

27, 28, 33, 34.



T 35N R8E

OAK 4"	N53W	42.1 LKS
Y BIRCH 12"	S46E	33.03 LKS
W PINE 3 1/2"	N34E	27.4 LKS
MAPLE 5"	S64W	70.0 LKS.

SMALL OPEN SWAMP LIES EAST OF STONE  
8.0'

ORIGINAL PINE BT. 14"	S52E	5.6 LKS
NEWER BT 9"	N77W	39.5 LKS.

SOUTH BET. 33, 34.

CONTINUING THE ABOVE RANDOM.

171.50 E ROAD (NE-SW.)

176.80 E ROAD (SAME) (NNW-SSE)

181.80 E ROAD SAME (NNE-SSW)

199.23 SET 1/4 STONE WEST OFF RANDOM  
0.05' BY PROPORTIONAL MEASUREMENT.

STONE SETS ON SIDE HILL WHICH  
SLOPES DOWN WARD TO THE EAST.

NORWAY PINE 14" N21E. 57.3 LK.

W. BIRCH 6" S37W. 40.6 LK.

MOUNDING WITH STONE.

212.0 SWAMP FILLED WITH SAWDUST AND  
TIMBERS FROM OLD SAWMILL.

213.80 POND LIES TO THE EAST

225.05 LEAVE SWAMP

225.15 OFF SET WEST TO AVOID BUILDINGS  
67.2'

227.30 R.R. TRACKS. E-W.

237.85 TURNED RT 111° 26' OFF BACK TAN.  
TO IDENTIFIED ORIGINAL SEC CORNERS TO  
SECS. 3, 4, 33, 34, 25.8'  
ORIGINAL STUMP OF WITNESS TREE  
STILL INTACT. TREE WAS USED AS

ALL  
TH  
TR  
MO

12.85

17 40

24.20

28 00

40 50

46.20

T35N R8E

CORNER POST. OLD SURVEY STAKES  
IN THE STUMP. BLAZES AND MARKINGS  
ON THE STUMP. STUMPS CORRESPOND  
TO WITNESS TREES. SET STONE IN  
HEART OF STUMP BY OPENING SIDE THAT  
FACES THE ROAD

MAPLE 4" S72E 21.8 LKS.

W PINE 5" N59E 59.0 LKS.

MAPLE 4" N8W 46.9 LKS.

MAPLE 6" S28W 18.8 LKS.

ALL THE ABOVE MARKINGS ARE INSCRIBED IN  
THE BARK SO AS NOT TO INJURE THE  
TREE AND INSURE THEIR GROWTH.

65' TO E CO TRUNK "B" EAST.

MOUNDED WITH STONE ON OPEN SIDE OF STUMP.

EAST BET 3-34

12.85 ALONG SOUTH EDGE OF SWAMP  
NORTH 100' THE SWAMP IS OPEN APPROX.  
800' ACROSS.

17.40 LEAVE SWAMP

(THIS RANDOM LINE BEGINS AT  
STATION 237.85 ON RANDOM BET 33-34)

24.20 ENTER SWAMP N-S

28.00 LEAVE " N-S

40.54 SET 1/4 STONE SOUTH 124.7'

NO EVIDENCE REMAINING

PINE STUMP N 52W 45.95 LKS.

PINE STUMP S 49W 47.3 LKS.

MOUNDED WITH STONE.

SOUTH TO A SWAMP BY PACING 135'

46.20 E TOWN ROAD NW-SE.

T35N R8E

80.72 FELL NORTH OF SEC COR 240.0'  
 SET SEC COR 2, 3, 34, 35, AS  
 EVIDENCED BY OLD STAKE AND MOUND  
 OF STONES CORRECT DISTANCE FROM  
 SWAMP. BLAZED TREES FACING THE  
 OLD STAKE

MAPLE 2"	N 62 E	16.36 LKS.
ASPEN 6	S 27 E	5.3 LKS
ASPEN 6	N 22 W	5.0 LKS
ASPEN 5 1/2	S 14 W	3.3 LKS.

INSCRIBED ONLY IN BARK

S75W 130' TO OPEN SWAMP.  
 MOUNDED WITH STONES.

EAST BET 27-34

BEGINNING AT STA 160.33 ON RANDOM BET.  
 27-28 (SEE PAGE 33)

10.50 ENTER ALDER SWAMP. N-S

13 90 LEAVE " "

16 45 ENTER ASH SWAMP N-S

20 30 LEAVE " " N-S

40 66 SET 1/4 COR BY (PROP. MEAS.) 53.1'

SOUTH OFF RANDOM

SMALL ASPEN GROWTH - AREA BURNED HARD

W. PINE 12" S 4° E 150.6 LKS

N. PINE 12" N 35 E 125.3 LKS

MOUNDED WITH STONE.

80.69 SET SEC COR 26, 27, 34, 35 BY  
 PROPORTIONAL MEASUREMENT - MANY  
 BLAZED LINES INDICATE THAT ACCEPTED  
 COR. IS NEAR THIS POSITION. (NO  
 STAKE OR BT TO BE FOUND.) 107.0'  
 SOUTH.

T.35N. R.8E.

BIRCH 13"	N 74 E.	16.9 LKS.
IRONWOOD 5"	N 69 W	25.8 LKS.
MAPLE 7"	S 58 W	31.2 LKS.
ELM 8"	S 14 E	54.4 LKS.

MAPLE AND IRONWOOD ARE MARKED IN THE BARK  
MOUNDED WITH STONE.

EAST BET 22-27

BEGIN AT STA 81.41 ON RANDOM BET 21-22  
(SEE PAGE 32)

41.54 TURNED LT. (SW) OFF BACK TAN.  $48^{\circ} 39'$   
51.1' TO POSITIVE ORIGINAL COR. AS  
EVIDENCED BY PLAIN MARKINGS CUT OUT  
OF A HEMLOCK STUMP. WHICH HAD GROWN  
OVER. ORIGINAL NOTES ERROR IN DIRECTION.  
STAKE SET ABOUT 7 YRS. AGO GROWTH  
RING ON OVER GROWTH ON MARKINGS.

HEMLOCK 12" N 77 E 15.4 LKS.

HEMLOCK 9" S 33 W 30.8 LKS.

OLD HEMLOCK BT 14" N 26 W 6. LKS.

80.96 TURNED LT. OFF BACK TAN (SE.)  $102^{\circ} 5'$   
74.6' TO POST SET IN RECENT SURVEY -  
STUMP QUITE LIKELY TO BE ORIGINAL  
TAMARAC BT. CORRESPONDS TO STAKE.

STONE SETS 15' OUT OF SWAMP AT  
THE SW. COR OF THE SWAMP (SWAMP SMALL)

ASPEN N 54 W 20.6 LKS

ASPEN S 47 W 21.6 LKS

ASPEN N 2 E 29.0 LKS

ASPEN S 25 E 25.1 LKS

T35N R8E

## NORTH BET 22-23

BEGIN AT STA. 80.96 ON RANDOM BET 22-27  
 38.75 TURNED RT OFF TAN. AHEAD TO SEC.  
 COR. AS IDENTIFIED BY ORIGINAL ST. STAKE  
 AT FENCE COR. INCORRECT DOES NOT EVEN  
 FACE ST.  $15^{\circ}45'30.6''$

MAPLE 5" N48E 26.8 LK.

MARKED ONLY IN THE BARK

MAPLE 12" N50W 65.4 LK.

ORIGINAL HEMLOCK ST. 9" S82W 12.1 LK.

MOUNDER WITH STONE.

59.20 E CO. TRUNK "D"

64.20 OFF SET EAST TO AVOID BUILDINGS 25.5'

81.39 TO A POINT AT RT ~~85~~ TO STONE COR.  
 TO SECS. 14, 15, 22, 23. 12.1' WEST OF  
 STONE. (SEE PAGE 13)

## SOUTH BET 26-27

BEGINNING AT STA. 80.96 BET 22-27

22.50 ENTER SWAMP, BUT HIGH GROUND

35.30 CREEK FLOWS N.W

41.11 TURNED (~~RT~~ RT (SW) OFF FORWARD TAN  
 TO  $\frac{1}{4}$  COR. POST 10 YRS OLD (BEARS DATE.  
 $25.5' 22^{\circ}14'$  DATED JULY 13, 1927  
 AND BEARS NAMES OF DUPLEY BROS -  
 G. HALE, - PHILIP GREIL, F. DAMON, AND  
 OTHERS. BLAZES INDICATE IT APPROX CORRECT.  
 STONE IS SET NEXT TO THE SOUTH  
 EDGE OF A CEDAR STUMP 13"  
 CEDAR 11" N 77W 26.2" LKS  
 (BLAZED PREVIOUSLY ON FOUR SIDES)

T. 35 N. R. 8 E.

LEANING CEDAR 8" S 56 E 33.5 LKS.  
MOUNDED WITH STONE.

53.0 LEAVE SWAMP

80.83 23.5' WEST TO SEC. COR. PREVIOUSLY SET.  
(SEE PAGE 37)

EAST BET 23-26

BEGIN AT STA 1.103 (CHAINS) BET 27-26

0.236 CHAINS .5' SOUTH OF POST.

24.20 ENTER SWAMP. N-S

29.20 LEAVE " N-S

34.10 ENTER " SW-NE

41.36 SET 1/4 SEC. COR. AS EVIDENCED BY  
OLD STAKE. BLAZES ON TREES NEAR  
BY. UPON DIGGING UNCOVERED POINTS OF  
OTHER VERY OLD STAKES. 2' NORTH.

SPRUCE 5 N 57 E 25.8 LKS.

SPRUCE 3 1/2 S 38 E 24.8 LKS.

INSCRIBED IN THE BARK.

82.61 FOUND SEC COR POST NORTH 3.5' (FT.)

DISTANCE NEAR CORRECT AND GOOD  
ALIGNMENT. OPEN - NO TREES TO  
WITNESS.

EAST 59' TO ENTER SMALL SWAMP

SOUTH 106' " " " "

MOUNDED WITH (LARGE) ROCK.  
MOUND

T.35N. R.8E.

NORTH BET 23-24.

TURNED NORTH OFF STA 82.61 BET 23-26

(SEE PAGE 37B)

42.12 TURNED LT. (EAST) OFF BACK TAN.  
 TO  $\frac{1}{4}$  POST ON FENCE LINE,  $88^{\circ}52' 64.2'$   
 REMAINS OF OAK STUMP PROPER  
 DISTANCE AND  $\frac{1}{4}$ , PROBABLE WITNESS.  
 TWIN OAK 4" S23E. 14.8 LKS.  
 ELM 3" N5°W 60.0 LKS

61.90 E Co HIGHWAY "D"

81.34 TO SEC CORN 13, 14, 23, 24.  
 WEST OF SEC CORN. 101.3  
 (SEE PAGE 9)

SOUTH BET 34-35

CONTINUING RANDOM BET 27-26 (SEE PAGE 37A)

118.58 TURNED RT. OFF FORWARD TAN. TO  
 STAKE SET TO VERY OLD BT.  
 $36^{\circ}19'$  121.8' VERY PLAIN AFTER  
 CHOPING OFF OVER GROWTH.

STONE SETS 10' INTO SWAMP ALONG THE  
 EAST EDGE.

N. PINE 7" S10E 7.9 LKS

SPRUCE 4" S41W 49.9 LKS

~~SOUTH TO RTX IN~~

SOIL IN SWAMP A HEAVY BLUE CLAY

OLD BT. 8" N64E 6.5 LKS

104.00 ENTER SWAMP.

118.20 LEAVE "

121.50 ENTER "

128.20 LEAVE "

T.35N. R.8E.

129.20 ENTER SWAMP  
 137.20 LEAVE SWAMP  
 144.20 LEAVE → E R.R. TRACKS E.W.  
ANGLE AND DISTANCE MISSING (114?)  
 160.61<sup>4</sup> TURNED LT OFF BACK TAX TO SEC STONE.  
 (SEE PAGE 35)

SOUTH BET 25-26

BEGINNING AT STA 82.61 BET 23-26  
 (SEE PAGE 37B)

1.59 ENTER OPEN MARSH  
 7.20 LEAVE " "  
 38.60 ENTER MEADOW  
 40.51 SET 1/4 STONE OFF RANDOM WEST  
 103.9' (PROPORTIONAL MEASUREMENT)  
 CORRESPONDS TO AN OLD BLAZE LINE.  
 WEST 86' TO LEAVE SWAMP  
 SOUTH 193' TO CREEK 10' WIDE  
 PINE STUB 20" S49E 67.4 LKS.  
 PINE 12" N23W 100.8 LKS.  
 MOUNDED WITH STONE.

43.0 E CREEK 14' WIDE.  
 45.0 LEAVE MARSH  
 69.0 ENTER ALDER SWAMP.  
 74.90 LEAVE " "  
 76.90 ENTER SPRUCE SWAMP.  
 79.10 LEAVE " "  
 80.85 TO <sup>COS.</sup> ~~X~~ POST WEST 207.8' FOUND  
 OLD STAKE BT. AND BLAZE LINE  
 OLD HEMLOCK BT N82W 28 LKS.  
 " ASPEN 6" S42E 46.5 LKS.  
 CHERRY 2 1/2 S48W 45.8 LKS.  
 ASPEN 5 N37E 87.9 LKS.  
 SOUTH TO SWAMP ~~OPEN~~ 105'  
 OPEN AROUND STONE.  
 MOUNDED WITH STONE.

37A)



T35N R8E

EAST BET 2-35

BEGINNING AT STA. 160.61<sup>5</sup> ON RANDOM BET 34-35. (SEE PAGE 38)

2.42	ENTER	SWAMP	N-S	0.8
7.22	LEAVE	"	N-S	17.8
15.90	ENTER	"	NW-SE.	36.9
19.85	LEAVE	"	N-S	

38.62 SET 1/4 STONE SOUTH 93.4' BY (PROP. MEAS.)

ASPEN 5" S 41 E 18.8 LK

PINE STUMP 15" N 29 W 6.3 LK

EAST TO SWAMP 40'

E-W FENCE NORTH ABOUT 200' TOO FAR

N-S " EAST " 100' " "

40.10	ENTER	MARSH	SW-NE.	70.5
<del>56.50</del>				

56.50	LEAVE	"	N-S.	77.7
-------	-------	---	------	------

78.72 TURNED LT TO SEC. CORN. OFF BACK TAN. 209.8 86° 48' 1, 2, 35, 36 AS EVIDENCED BY ORIGINAL BEARING TREES.

CEDAR 8" S 45 E 34.24 LKS.

CEDAR 5" S 58 W 14.09 LKS.

CEDAR 10" N 78 W 37.54 LKS.

CEDAR 7" N 39 E 45.14 LKS.

ORIGINAL TAMARAC	BT.	N 67 W	19.5 LKS	9.1
------------------	-----	--------	----------	-----

"	"	"	S 51 E	45. LKS.	12.5
---	---	---	--------	----------	------

NORTH TO LEAVE SWAMP 230' 39.1

WEST " " " 184'

MOUNDED WITH STONE.

T.35N. R.8E.

NORTH 35-36

BEGINNING AT STA. 78.72 ON RANDOM BET.  
2-35 (SEE PAGE 40)

0.80 LEAVE SWAMP.

17.81 E RR. E-W

36.92 SET  $\frac{1}{4}$  SEC. COR. EAST OFF RANDOM

21.9' - AREA IS VERY ROCKY

HEMLOCK 10" S44 E 102.58 LKS.

W BIRCH 5" N83W 59. LKS

MOUNDED WITH STONE. - ON HILL SLOPING

TO THE SOUTH.

42.30 ENTER SWAMP E-W.

49.00 LEAVE " E-W.

62.70 CREEK 8' FLOWS WNW.

70.50 SAME CREEK FLOWS NNE

77.70 TURNED LT. OF BACK TAN (SE) TO  
SEC COR. 25, 26, 35, 36 (SEE PAGE 39)

43° 23' 79.2'

WEST BET ~~25-36~~ 26-35

TURNED RT 91° OFF <sup>BACK TAN. AT</sup> STA 77.70 ON RANDOM  
BET 35-36

9.17 ENTER SWAMP. N-S

12.57 LEAVE " N-S

39.16 SET  $\frac{1}{4}$  STONE NORTH 6.45'

BLAZE LINE RUN NORTH OF STONE

BUT BECAUSE OF FAULTY ALIGNMENT

AND BECAUSE IT REVEALED NO STAKE

OR BT., IT WAS IGNORED.

HEMLOCK 12" S11W 34.4 LK

HEMLOCK 11" N55E 62.4 LK

MOUNDED WITH STONE.

T35N R8E

79.17 TO 6.45' SOUTH OF SEC. CORN. 26, 27, 34, 35.  
(SEE PAGE 36)

EAST BET 25-36

BEGINNING AT 77.70 BET 35-36 TURNED  
LT OF BACK TAN 28°

10.30 ENTER SPRUCE SWAMP

14.95 E CREEK 9' WIDE N-S

28.50 LEAVE SWAMP

34.40 ENTER SWAMP.

46.30 OLD RR. GRADE.

40.63 SET 1/4 STONE SOUTH 50.0' OFF  
RANDOM BY (PROP. MEAS) AT  
SWAMP LEVEL. AT FOOT OF SMALL  
HILL EAST OF STONE. WEST TO FOOT  
OF HILL ACROSS VALLEY 62'

TAMARAC STUMP 21" N 70 W 69.7

" " 12" S 53 W 81.97

MOUNDED WITH A FEW STONES.

59.40 E HIGHWAY 17.

62.40 ENTER SWAMP

65.0 POND

66.5 ACROSS POND.

70.0 ENTER LEAVE SWAMP.

74.5 ENTER SWAMP.

79.20 LEAVE SWAMP

80.31 TURNED LT. OFF BACK TAN (SOUTH)  
TO IRON POST SET BY ONEIDA CO.  
92° 16' 55.2'

PINE STUB N.W. 90.2'

T.35N. R8E.

EAST BET 24-25.

BEGINING 3.0' SOUTH OF SEC CORN.

23,24,25,26 (SEE PAGE 37B)

0.83 ENTER MEADOW N-S

2.29 LEAVE " N-S

8.10 AN OLD ROAD

28.26 SET A FLAG FOR TRIANGULATION

29.40 TO PINE LAKE.

29.59 SET M.C. AT WATERS EDGE.

SOUTH 65.7'

BIRCH 5" N26W 42.7 LKS.

PINE STUMP 12" S8W 14.55 LKS.

SOUTH TO RT. X IN SHORE LINE (N.S. - E.W) 310'

MOUNDED WITH COARSE GRAVEL TO AVOID

WAVE WASH SHORE LINE N-S.

00.00 BEGINING AT 0+00 AGAIN ACROSS THE LAKE

OFF SET NORTH 301.85' AND TURNED 77°10'

BET THE HUBS ON TAN. (1325.0' BET HUBS)

- 2.0 TO LAKE.

46.29 (RANDOM LINE STATIONING CONTINUED FROM  
WEST SHORE) SET M.C. ON EAST  
SHORE SOUTH 106.7'

WHITE POST SET BY CONSERVATION  
COMM. MARKING LAKE IMPROVEMENT  
WORK S11E 58.6 LKS.

SOUTH TO POINT ON SHORE LINE 100'

4.25 FROM HUB ON EAST BANK TO E  
OF HIGHWAY 17.

14.95 ENTER SWAMP

20.80 LEAVE "

29.35 TURNED LT. (SOUTH) OFF BACK TAN

TO SEC CORN 19, 24, 25, 30 AS SET

BY <sup>ONEIDA</sup> ~~ONEIDA~~ CO STAKES TO VERIFY IT

181.2' 88° 59'

T.35N. R.8E.

## EAST BET 1-36

BEGIN AT STATION 78.72 TURNED THIS  
RANDOM LINE SOUTH  $3\frac{1}{4}^{\circ}$  TO RUN NEAR  
TO TRUE LINE.

3.14 CREEK 6' FLOWS NNE.  
6.34 LEAVE SWAMP.  
33.60 ENTER SWAMP.  
39.60 LEAVE "  
40.19 TURNED RT. OFF FORWARD TAN. (SOUTH)  
 $94^{\circ}55'$  171.6' TO ORIGINAL  $\frac{1}{4}$  SEC  
COR. AS EVIDENCED BY OLD B.T. AND  
STAKE. STONE SETS BET TWO  
HILL SEPARATED BY 50' OF SWAMPY  
GROUND MIDWAY BET. HILLS. AT END OF  
POINT IN SWAMP

PINE STUMP 14" S33E 65.9 LKS.

OLD B.T. 12" S18W 24.7 LKS.

W.PINE 7" N6W 53.9 LKS.

MOUNDED WITH STONE.

58.80 ENTER SWAMP N-S  
62.90 LEAVE " NE-SW  
69.30 ENTER " N-S  
72.60 POND.  
74.20 LEAVE POND  
79.0 LEAVE SWAMP N-S  
79.62 TURNED LT. OFF BACK TAN. SOUTH  
 $100^{\circ}16'$  155.0' TO IRON POST  
SET BY ONEIDA CO.